

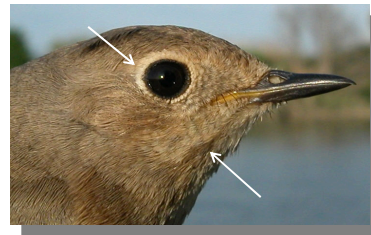
332a Identification Females Redstart

Put your logo here

IDENTIFICATION OF FEMALES OF COMMON REDSTART (*Phoenicurus phoenicurus*) AND BLACK REDSTART (*Phoenicurus ochruros*)

FEMALES (AND MOST OF THE POSTJUVENILE MALES OF BLACK REDSTART)

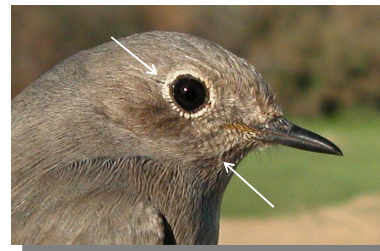
Females can be separated by plumage tone and pattern of tertials, malar stripe and eye-ring.



Common Redstart. Pattern of head. Female: with faint malar stripe; poorly marked eye-ring.



Common Redstart. Colour of plumage. Female: grey brown above and pale buff below; tertials with pale buff edges.



Black Redstart. Pattern of head. Female/postjuvenile male: with dark malar stripe; well marked eye-ring.



Black Redstart. Colour of plumage. Female/postjuvenile male: slate grey above and below, without buff tones; tertials with dark buff edges.