

# 451 Common Reed Bunting

Put your logo here

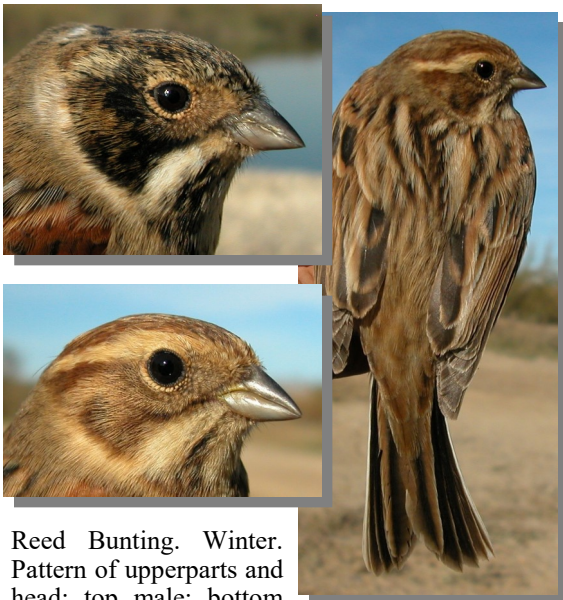


Reed Bunting. Late winter. Male (12-II).

## COMMON REED BUNTING (*Emberiza schoeniclus*)

### IDENTIFICATION

13-16 cm. Late **winter**, **male** with head and throat black and wide white band around neck. **Male** in **autumn/early winter** and **female** with head chestnut-reddish, supercilium and moutache buff; throat whitish. Bill grey and outer tail feathers white.



Reed Bunting. Winter. Pattern of upperparts and head: top male; bottom female.

### SIMILAR SPECIES

**Male** in **breeding** plumage unmistakable. **Male** in **winter** and **female** recall that of a **female House Sparrow** which lacks white on

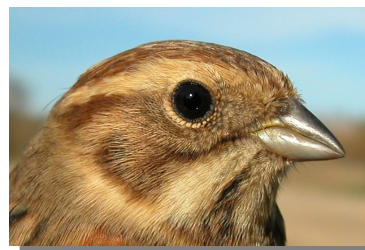


House Sparrow. Female.



### SEXING

**Male** in **spring** with black head and throat. In **autumn/winter**, there are **males** with a plumage pattern similar to that of **females**, but recognizable by having a white band on nape, grey rump and black on base of neck and crown feathers with rounded pattern; wear of feathers on the head will make the **breeding** pattern of **male** appear throughout the winter. **Female** without (or quite hidden) white band on nape; brownish rump; base of neck feathers without black patch; base of crown feathers black-grey with pointed pattern. **CAUTION:** it is necessary to lift feathers from the crown and throat to appreciate their pattern. Some **females** have much white on neck and greyish rump.



Reed Bunting. Winter. Sexing. Pattern of head: top male; bottom female.

## 451 Common Reed Bunting

Put your logo here



Reed Bunting. Winter. Sexing. Pattern of base of crown feathers: left male; right female.



Reed Bunting. Winter. Sexing. Pattern of base of throat feathers: left male; right female.



Reed Bunting. Winter. Sexing. Pattern of nape: left male; right female.



Reed Bunting. Winter. Sexing. Pattern of rump: left male; right female.

### AGEING

This species doesn't breed in Aragon, so only 2 types of age can be recognized:

**1st year autumn/2nd year winter** with moult limits between tertials or between tertials and secondaries; tail feathers with pointed tips due to wear; usually pale flight feathers.

**Adult** with fresh wing feathers, without moult limits; tail feathers fresh and with rounded tips; usually dark flight feathers.

**CAUTION:** some birds moult all tail feathers in their **postjuvenile** moult, so fresh and rounded feathers no necessary suggest an **adult** bird.



Reed Bunting. Winter. Ageing. Wear of tail feathers: left adult; right 1st year.

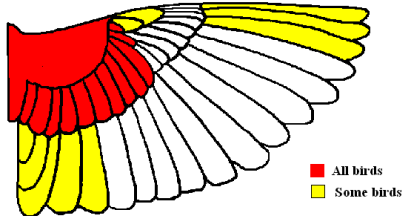


# 451 Common Reed Bunting

Put your logo here

## MOULT

Complete **postbreeding** moult, usually finished in October. Partial **postjuvenile** moult involving body feathers, lesser, median and all greater coverts; some birds moult tertials, all tail feathers and some flight feathers; usually finished in October.



Reed Bunting.  
Extent of postjuvenile moult.

■ All birds  
■ Some birds



Reed Bunting. Autumn. Weared male (19-X).

## PHENOLOGY

I	II	III	IV	V	VI	VII	VIII	IX	X	XI	XII

## STATUS IN ARAGON

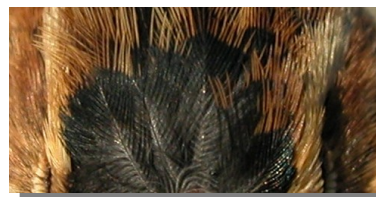
Winter visitor. Widely distributed throughout marshlands and riversides from the Region,



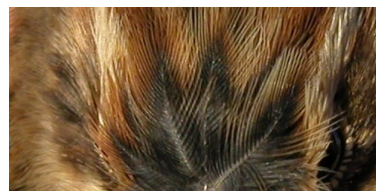
Reed Bunting. Outumn. Male poorly weared (21-X).



Reed Bunting. Female (19-X).

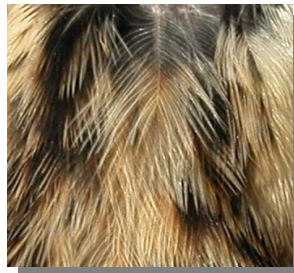
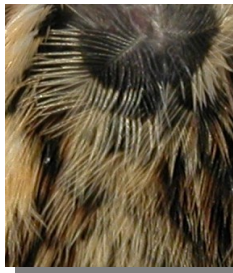


Reed Bunting. Pattern of base of crown feathers: top male (20-X); bottom female (20-X).

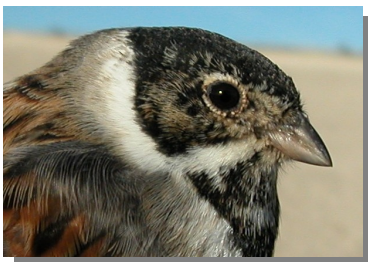


# 451 Common Reed Bunting

[Put your logo here](#)



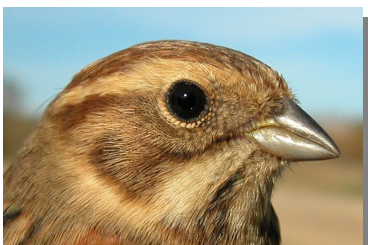
Reed Bunting. Pattern of base of neck feathers: left male (20-X); right female (20-X).



Reed Bunting. Nape pattern. From top to bottom: male in late winter (12-II); male poorly weared in autumn (21-X); male weared in autumn (19-X); female (19-X).



Reed Bunting. Head pattern. From top to bottom: male in late winter (12-II); male poorly weared in autumn (21-X); male weared in autumn (19-X); female (19-X).



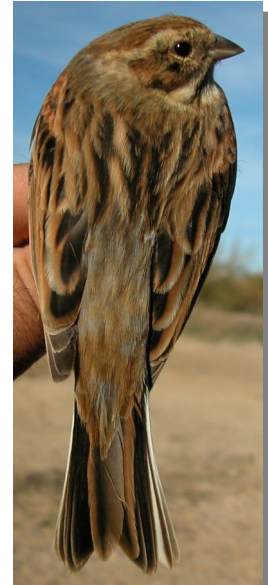


# 451 Common Reed Bunting

Put your logo here



Reed Bunting. Breast pattern. From top to bottom: male in late winter (12-II); male poorly weared in autumn (21-X); male weared in autumn (19-X); female (19-X).



Reed Bunting. Male. Pattern of rump and upperpart: top left late winter (12-II); top right poorly weared in autumn (21-X); left weared in autumn (19-X).



Reed Bunting. Female. Pattern of rump and upperpart (19-X).

## 451 Common Reed Bunting

Put your logo here



Reed Bunting. Tail wear: left adult (20-X); right 1st year (20-X).



Reed Bunting. 1st year. Male: pattern of wing (29-X).



Reed Bunting. Adult. Male: pattern of wing (21-X).



Reed Bunting. 1st year. Female: pattern of wing (19-X).



Reed Bunting. Adult. Female: pattern of wing (21-X).