

447 Ortolan Bunting

Put your logo here

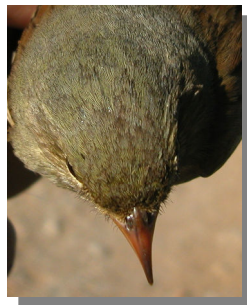
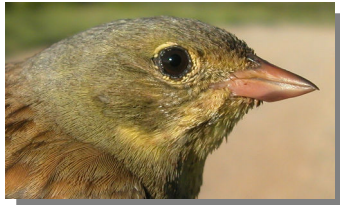
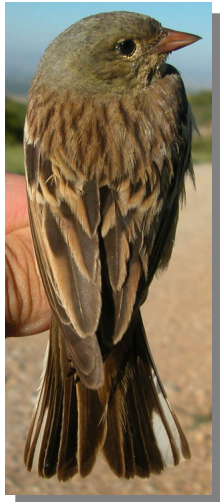


Ortolan Bunting. Spring. Adult. Male (15-VI).

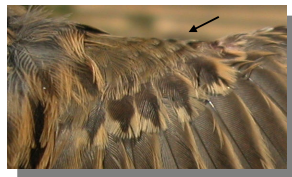
ORTOLAN BUNTING (*Emberiza hortulana*)

IDENTIFICATION

15-17 cm. Upperparts brown streaked dark; buff underparts, with yellow throat and moustachial stripe; greenish head; brown bill with pinkish tinge. **Juveniles** brown, with paler underparts.



Ortolan Bunting. Adult. Pattern of upperparts, breast and head.



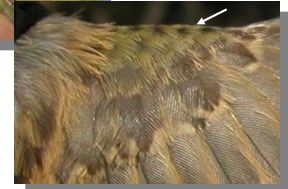
Ortolan Bunting. Juvenile. Pattern of head and small wing coverts.

SIMILAR SPECIES

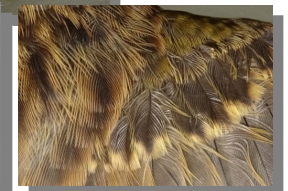
Adult birds are unmistakable due to their head pattern with a moustachial stripe. **Juveniles** recalls to the **Cirl Bunting** ones, which have dark bill and greenish lesser coverts; juveniles **Yellowhammer** have dark bill and chestnut rump; juveniles **Rock Bunting** have dark bill and grey lesser coverts.



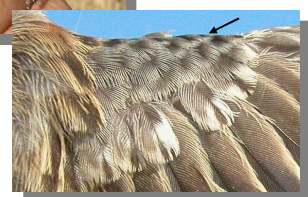
Cirl Bunting. Juvenile.



Yellowhammer. Juvenile



Rock Bunting. Juvenile.

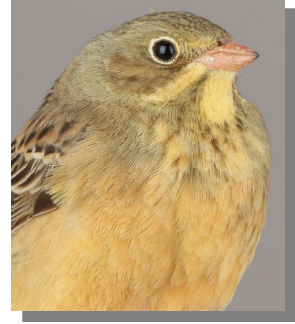


447 Ortolan Bunting

Put your logo here

SEXING

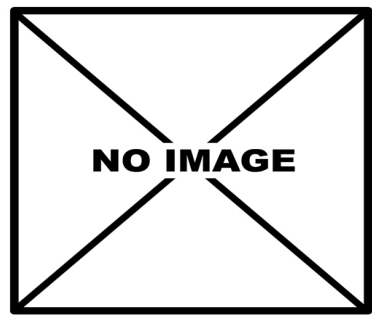
In **spring**, **male** with unstreaked crown or with only very thin shaft streaks; breast band and malar stripe unstreaked. **Female** with streaked dark crown; malar stripe finely spotted dark; breast band pale greyish-buff, sometimes tinged rufous-buff, usually densely (but sometimes sparse) streaked dark (**CAUTION**: birds with crown and breast slightly streaked must not be sexed). In **autumn**, most **males** similar to **females** so only some **adult males** are recognizable if clear greyish-olive breast band separate yellowish throat from rufous lower breast and belly. **Juveniles** and **1st year** birds cannot be sexed using plumage pattern.



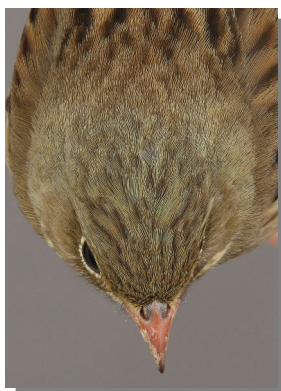
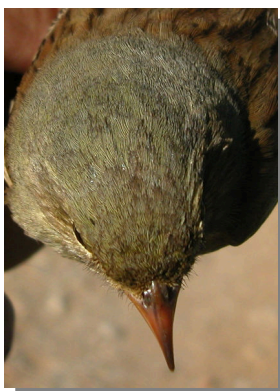
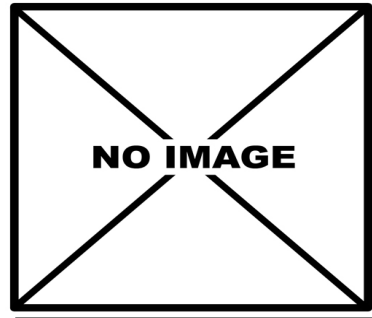
Ortolan Bunting. Sexing. Spring. Pattern of breast: left male; right female (Photo: Ottenby Bird Observatory).



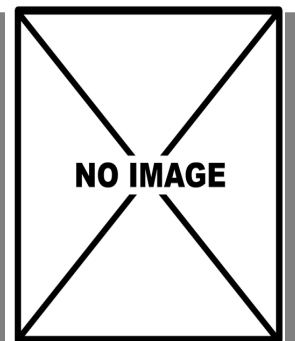
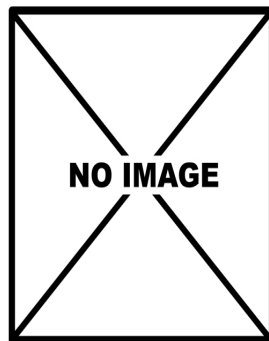
Ortolan Bunting. Sexing. Spring. Pattern of head: top male; bottom female (Photo: Ottenby Bird Observatory).



Ortolan Bunting. Sexing. Autumn. Adult. Pattern of head: top male; bottom unsexable



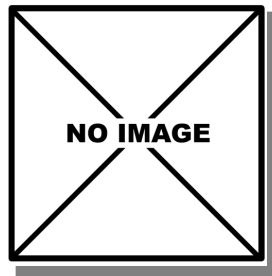
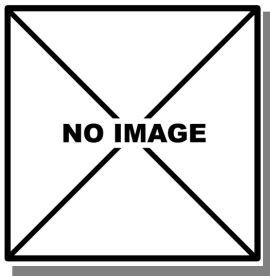
Ortolan Bunting. Sexing. Spring. Pattern of crown: left male; right female (Photo: Ottenby Bird Observatory).



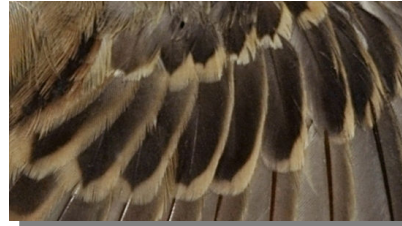
Ortolan Bunting. Sexing. Autumn. Adult. Pattern of crown: left male; right unsexable

447 Ortolan Bunting

Put your logo here



Ortolan Bunting. Sexing. Autumn. Adult. Pattern of breast: left male; right unsexable



Ortolan Bunting. Ageing. Autumn. Moulting limit on greater coverts: top adult (photo Ralph Lösekrug); bottom 1st year

AGEING

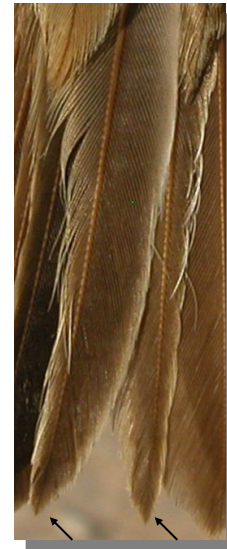
4 age groups can be recognized:

Juvenile with fresh plumage; face and underparts whitish-buff clearly streaked blackish; tail feathers with pointed tips.

1st year autumn usually with unmoulted **juvenile** outer greater coverts, worn, edged whitish and short, contrasting with buff edged median coverts and moulted inner greater coverts, longer, edged buff and with darker centre (**CAUTION**: some birds moult all greater coverts); all flight feathers with only one age; tail feathers **juvenile** and usually pointed.

2nd year spring with primary coverts and flight feathers more worn and bleached than in **adults**; if **juvenile** greater coverts or tail feathers retained then very worn; flight feathers always with only one age.

Adult in autumn without moult limits on wing coverts; if moult is suspended then with two generations of flight feathers; tail feathers fresh and rounded; in **spring** usually with flight and tail feathers quite fresh; due to the interruption of moult and its continuity in wintering sites usually with two generations of greater coverts and, sometimes, two generations of flight feathers.



Ortolan Bunting. Ageing. Spring. Pattern of tip of the central tail feathers: left adult; right 2nd year.



Ortolan Bunting. Ageing. Spring. Pattern of tip of the outermost tail feathers: left adult; right 2nd year.

447 Ortolan Bunting

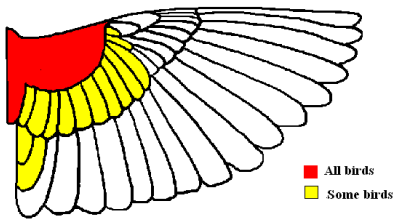
Put your logo here

MOULT

Complete **postbreeding** moult, usually finished in September; many birds suspend their moult before migration leaving all or some secondaries unmoulted. Partial **postjuvenile** moult including body feathers, all lesser coverts, most or all median coverts, none, some inner or all greater coverts and occasionally some tertials; usually finished in September before migration. Both age classes have a **prebreeding** moult involving body feathers, none or some lesser and median coverts, some inner greater coverts, some or all tertials and none to all tail feathers; **adults** may finish secondaries moult suspended in autumn.



Ortolan Bunting. Spring. 2nd year. Male (15-VI).



Ortolan Bunting. Extent of postjuvenile moult.



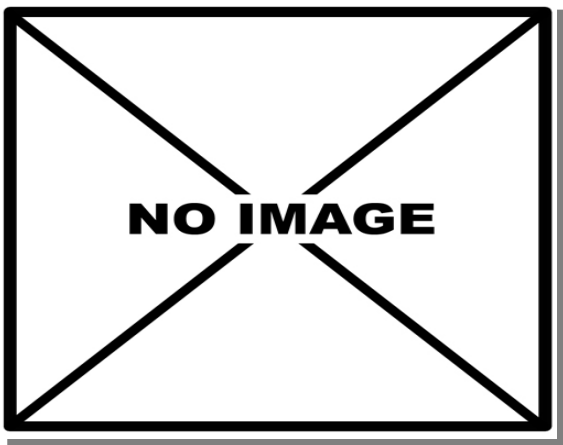
Ortolan Bunting. Spring. 2nd year. Female (15-V)
(Photo: Ottenby Bird Observatory).

PHENOLOGY

I	II	III	IV	V	VI	VII	VIII	IX	X	XI	XII

STATUS IN ARAGON

Summer visitor breeding in the mountainous areas of the Region.



Ortolan Bunting. Spring. Adult. Female ().



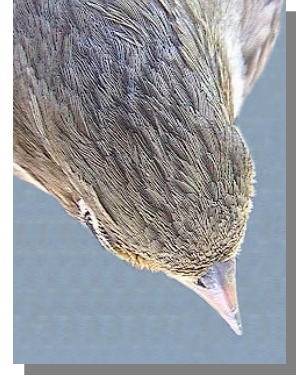
Ortolan Bunting. Spring. Juvenile (20-VII).

447 Ortolan Bunting

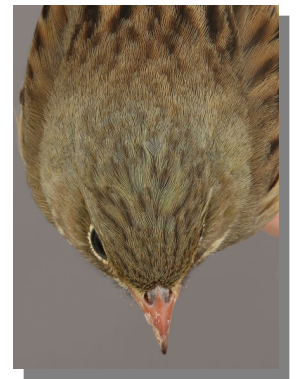
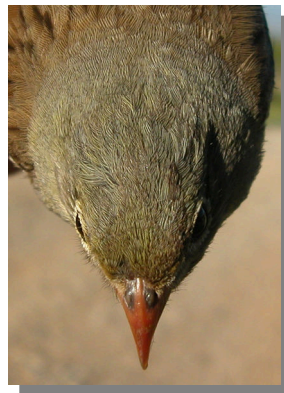
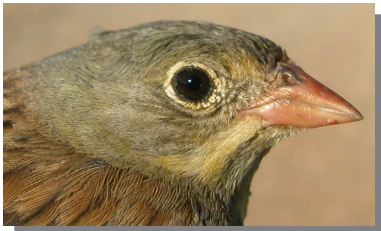
Put your logo here



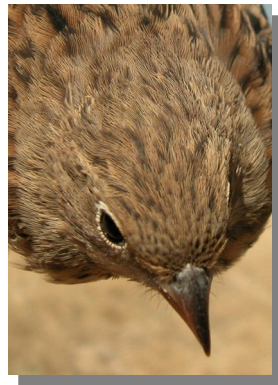
Ortolan Bunting. Spring. Adult. Head pattern: top male; (15-VI); bottom female (15-IV) (Photo: Bernhard Vohwinkel).



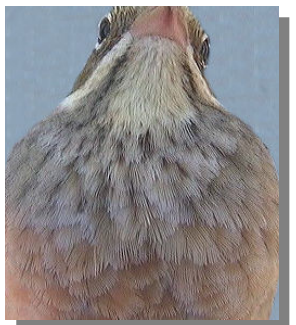
Ortolan Bunting. Spring. Adult. Crown pattern: left male; (15-VI); right female (15-IV) (Photo: Bernhard Vohwinkel).



Ortolan Bunting. Spring. Head pattern: top 2nd year male (15-VI); middle 2nd year female (15-V) (Photo: Ottenby Bird Observatory); bottom juvenile (20-VII).



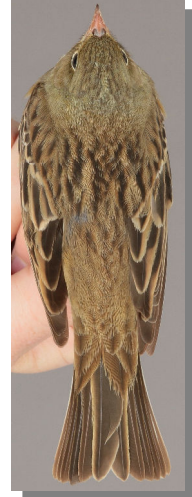
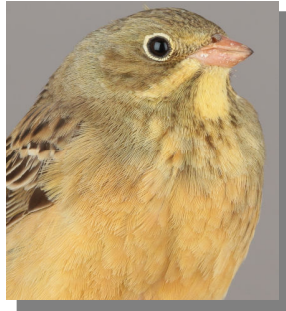
Ortolan Bunting. Spring. Crown pattern: top left 2nd year male (15-VI); top right 2nd year female (15-V) (Photo: Ottenby Bird Observatory); left juvenile (20-VII).



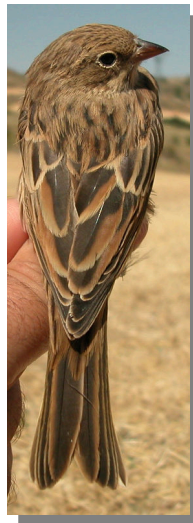
Ortolan Bunting. Spring. Adult. Breast pattern: left male; (15-VI); right female (15-IV) (Photo: Bernhard Vohwinkel).

447 Ortolan Bunting

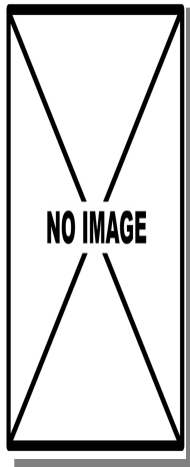
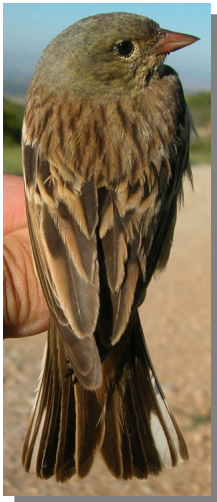
Put your logo here



Ortolan Bunting. Spring. Breast pattern: top left 2nd year male (15-VI); top right 2nd year female (15-V) (Photo: Ottenby Bird Observatory); left juvenile (20-VII).



Ortolan Bunting. Spring. Upperparts pattern: top left 2nd year male (15-VI); top right 2nd year female (15-V) (Photo: Ottenby Bird Observatory); left juvenile (20-VII).



Ortolan Bunting. Spring. Adult. Upperpart pattern: left male; (15-VI); right female ().



Ortolan Bunting. Spring. Adult. Tail pattern: left male; (15-VI); right female (15-IV) (Photo: Bernhard Vohwinkel).

447 Ortolan Bunting

Put your logo here



Ortolan Bunting. Spring. 2nd year. Male: pattern of wing (15-VI).



Ortolan Bunting. Spring. Tail pattern: top left 2nd year male (15-VI); top right 2nd year female (15-V) (Photo: Ottenby Bird Observatory); left juvenile (20-VII).



Ortolan Bunting. Spring. 2nd year. Female: pattern of wing (15-V) (Photo: Ottenby Bird Observatory).



Ortolan Bunting. Spring. Adult. Male: pattern of wing (15-VI).



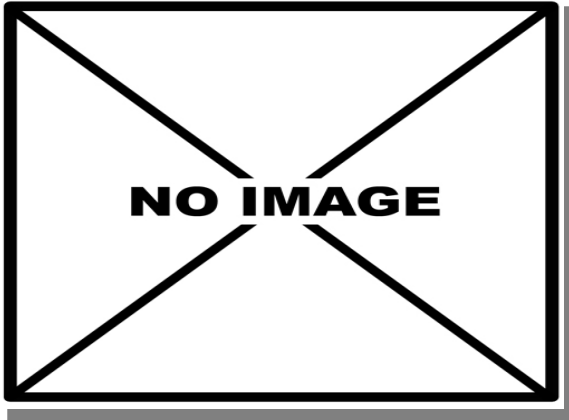
Ortolan Bunting. Spring. Juvenile: pattern of wing (20-VII).



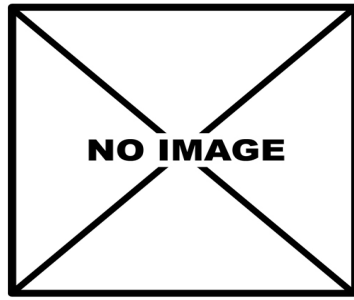
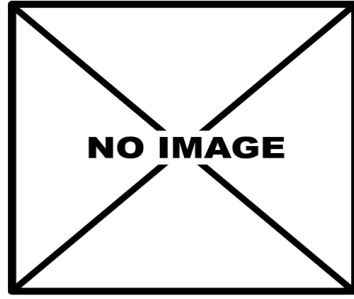
Ortolan Bunting. Spring. Adult. Female: pattern of wing (15-IV) (Photo: Bernhard Vohwinkel).

447 Ortolan Bunting

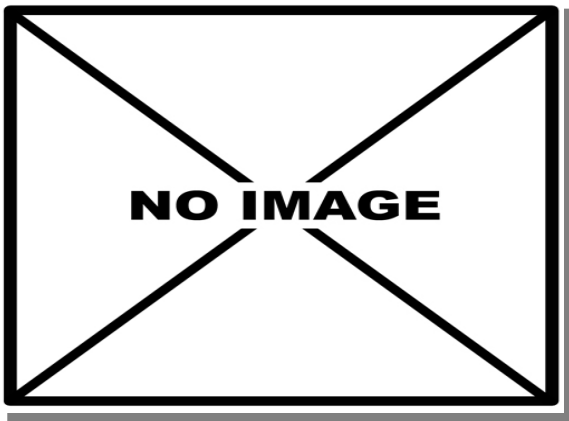
Put your logo here



Ortolan Bunting. Autumn. Adult. Male ().



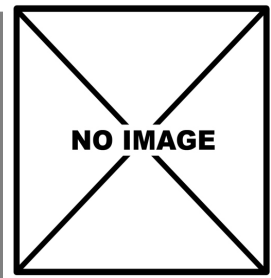
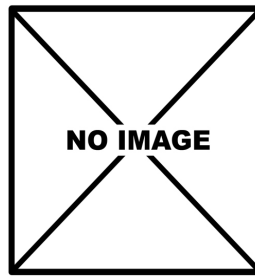
Ortolan Bunting. Autumn. Head pattern: top adult male (); middle adult unsexable (); bottom 1st year (27-IX).



Ortolan Bunting. Autumn. Adult. Unsexable ().



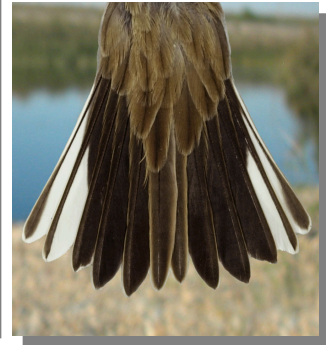
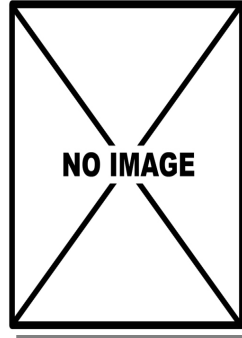
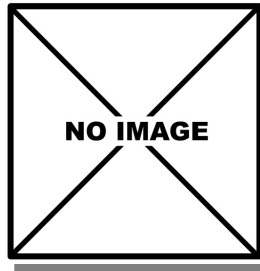
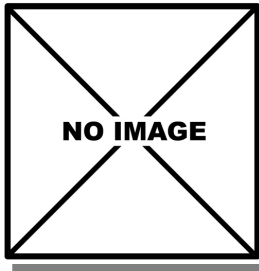
Ortolan Bunting. Autumn. 1st year (27-IX).



Ortolan Bunting. Autumn. Crown pattern: top left adult male (); top right adult unsexable (); left 1st year (27-IX).

447 Ortolan Bunting

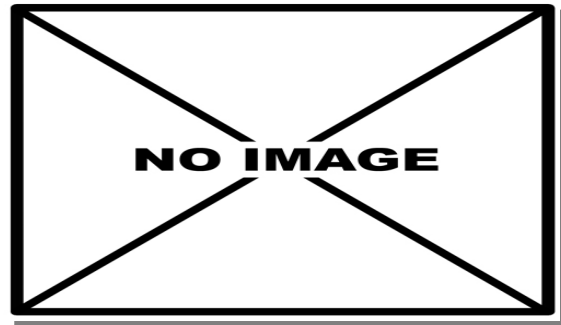
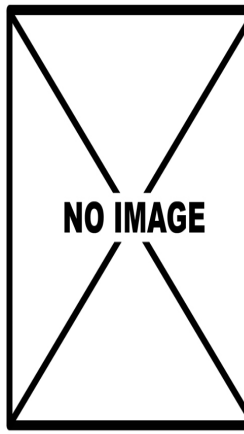
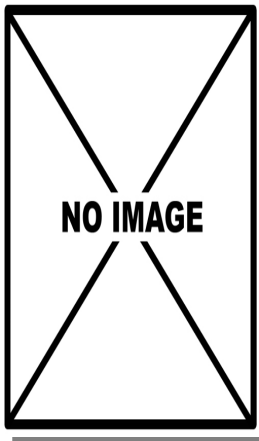
Put your logo here



Ortolan Bunting. Autumn. Breast pattern: top left adult male (); top right adult unsexable (); left 1st year (27-IX).



Ortolan Bunting. Autumn. Tail pattern: top left adult male (); top right adult unsexable (20-IX) (Photo (slightly modified): Ralph Lösekrung); left 1st year (27-IX).



Ortolan Bunting. Autumn. Upperpart pattern: top left adult male (); top right adult unsexable (); left 1st year (27-IX).

Ortolan Bunting. Autumn. Adult. Male: pattern of wing ().



Ortolan Bunting. Autumn. Adult. Unsexable: pattern of wing (20-IX) (Photo (slightly modified): Ralph Lösekrung).

447 Ortolan Bunting

Put your logo here



Ortolan Bunting. Autumn. 1st year: pattern of wing (27-IX).