

446 Rock Bunting

Put your logo here



Rock Bunting. Summer. Adult. Male. (18-VI).

ROCK BUNTING (*Emberiza cia*)

IDENTIFICATION

14-18 cm. **Adults** with dark streaked upperparts; chestnut underparts; head grey with dark stripes along crown-side; bluish bill. **Juveniles** with grey lesser coverts.

Rock Bunting. Adult. Pattern of head and upperparts.



Rock Bunting. Juvenile. Pattern of head and lesser coverts.



SIMILAR SPECIES

Adults unmistakable by their head pattern. **Juveniles** **Rock Bunting** are similar to **Cirl Bunting** ones which have greenish lesser coverts; **Yellowhammer** ones have chestnut rump; **Ortolan Bunting** ones have throat and breast brown-yellowish; **Corn Bunting** is bigger (16-19 mm) and without white on the outermost tail feathers.



Cirl Bunting. Juvenile.



Yellowhammer. Juvenile.

446 Rock Bunting

Put your logo here



Ortolan Bunting. Juvenile.



Rock Bunting. Winter. Sexing. Pattern of crown: left male; right female.



Corn Bunting

AGEING

3 types of age can be recognized:

Juvenile grey and without dark bands on head; with fresh plumage.

1st year autumn/2nd year spring with moult limits on wing within alula feathers, within tertials or between tertials and secondaries; if tertials are unmoulted then quite worn; with moult limit on tail if central pair is moulted; 4th tail feather without white tip; unmoulted tail feathers with pointed tips due to wear.

Adult without moult limits on wing; 4th tail feather with white tip; tail feathers with rounded tips.

SEXING

Male with black stripes on head; centre of crown pure grey with no more than very fine black streaking; wing longer than 80 mm. **Female** with brown-blackish or brown-grey stripes on head; centre of crown grey or brownish-grey, usually with heavy streaked; wing shorter than 78 mm. **Juveniles** cannot be sexed using plumage characteristics. **CAUTION:** some **females** have well defined head pattern; some **1st year males** are quite similar like **adult females** so it is necessary a right ageing. Pattern of head in **autumn** is bad defined and so not always useful for sexing.



Rock Bunting. Summer. Sexing. Pattern of crown: left male; right female.



Rock Bunting. Summer. Ageing. Pattern of head: top adult female; bottom juvenile.

446 Rock Bunting

Put your logo here



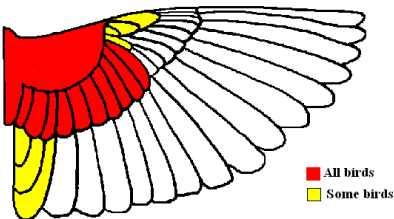
Rock Bunting. Ageing. Pattern of 4th tail feather: left adult; right 1st year.



Rock Bunting. Summer. Ageing. Wear of central tail feather: left adult; right 2nd year.

MOULT

Complete **postbreeding** moult, usually finished in October. Partial **postjuvenile** moult including body feathers, lesser, median, most or all greater coverts and sometimes tertials and central tail feathers; usually finished in October.



Rock Bunting. Extent of postjuvenile moult.

PHENOLOGY

| I | II | III | IV | V | VI | VII | VIII | IX | X | XI | XII |
|---|----|-----|----|---|----|-----|------|----|---|----|-----|
| | | | | | | | | | | | |

STATUS IN ARAGON

Resident. Widely distributed throughout the Region, absent from the most deforested zones of the Ebro Basin.



Rock Bunting. Summer. Adult. Female (21-V).



Rock Bunting. Summer. 2nd year. Male (12-VI).



Rock Bunting. Summer. 2nd year. Female (27-VI).

446 Rock Bunting

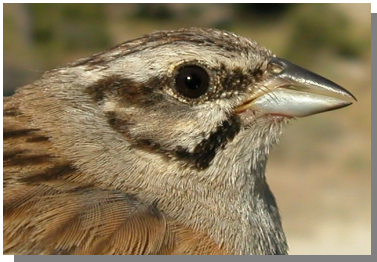
Put your logo here



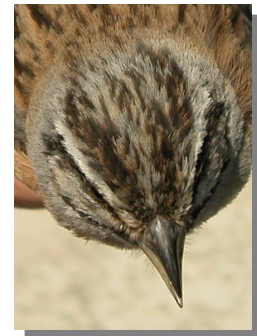
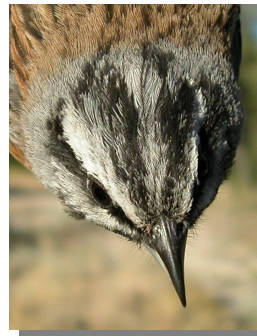
Rock Bunting. Summer. Juvenile (14-VII).



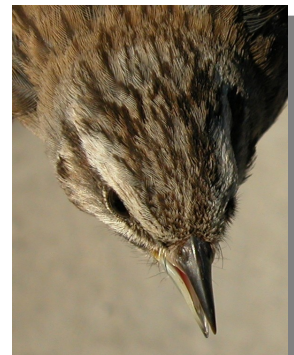
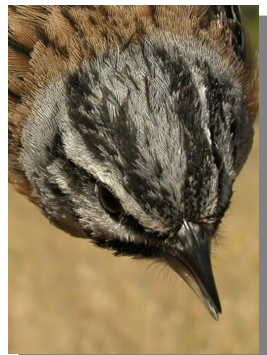
Rock Bunting. Summer. Adult. Head pattern: top male (18-VI); bottom female (21-V).



Rock Bunting. Summer. Head pattern: top 2nd year male (12-VI); middle 2nd year female (27-VI); bottom juvenile (27-VI).



Rock Bunting. Summer. Adult. Crown pattern: left male (18-VI); right female (21-V).



Rock Bunting. Summer. Crown pattern: top left 2nd year male (12-VI); top right 2nd year female (27-VI); left juvenile (27-VI).

446 Rock Bunting

Put your logo here



Rock Bunting. Summer. Adult. Breast pattern: left male (18-VI); right female (21-V).



Rock Bunting. Summer. Breast pattern: top left 2nd year male (12-VI); top right 2nd year female (27-VI); left juvenile (27-VI).



Rock Bunting. Colour of legs: top adult (02-VI); bottom juvenile (18-VII).



Rock Bunting. Summer. Adult. Tail pattern: left male (18-VI); right female (21-V).



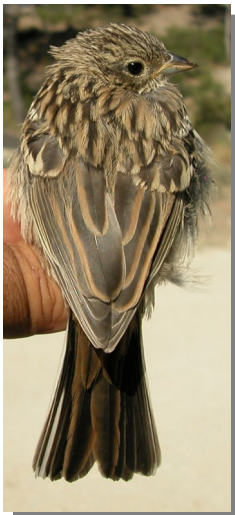
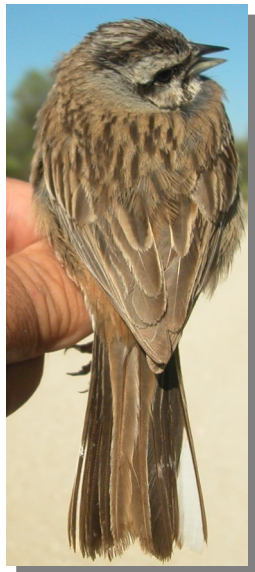
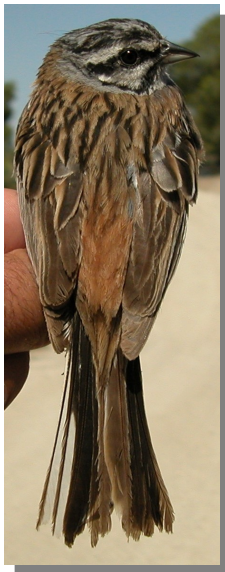
Rock Bunting. Summer. Tail pattern: top left 2nd year male (12-VI); top right 2nd year female (27-VI); left juvenile (27-VI).

446 Rock Bunting

[Put your logo here](#)



Rock Bunting. Summer. Adult. Upperpart pattern: left male (18-VI); right female (21-V).



Rock Bunting. Summer. Upperpart pattern: top left 2nd year male (12-VI); top right 2nd year female (27-VI); left juvenile (27-VI).



Rock Bunting. Summer. Adult. Male: pattern of wing (18-VI).



Rock Bunting. Summer. Adult. Female: pattern of wing (21-V).



Rock Bunting. Summer. 2nd year. Male: pattern of wing (12-VI).

446 Rock Bunting

Put your logo here



Rock Bunting. Summer. 2nd year. Female: pattern of wing (27-VI).



Rock Bunting. Summer. Juvenile: pattern of wing (27-VI).



Rock Bunting. Autumn. Adult. Male (12-XI).



Rock Bunting. Autumn. Adult. Female (01-XI).



Rock Bunting. Autumn. 1st year. Male (12-X).



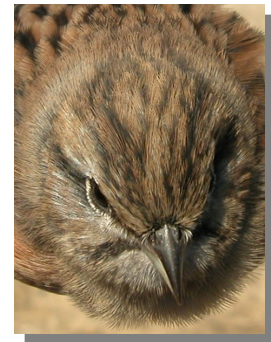
Rock Bunting. Autumn. 1st year. Female (12-X).

446 Rock Bunting

Put your logo here



Rock Bunting. Autumn. Adult. Head pattern: top male (12-XI); bottom female (01-XI).



Rock Bunting. Autumn. 1st year. Crown pattern: left male (12-X); right female (12-X).



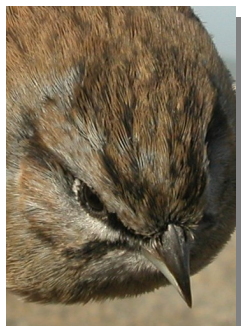
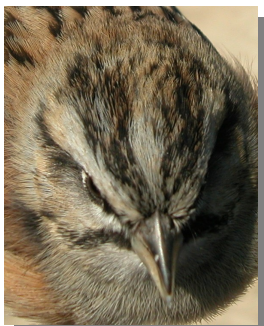
Rock Bunting. Autumn. 1st year. Head pattern: top male (12-X); bottom female (12-X).



Rock Bunting. Autumn. Adult. Breast pattern: left male (12-XI); right female (01-XI).



Rock Bunting. Autumn. 1st year. Breast pattern: left male (12-X); right female (12-X).



Rock Bunting. Autumn. Adult. Crown pattern: left male (12-XI); right female (01-XI).

446 Rock Bunting

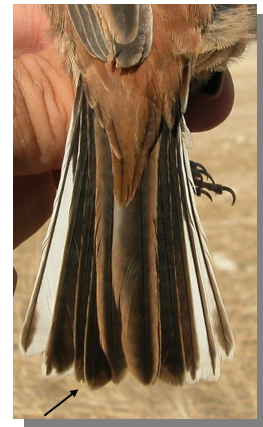
Put your logo here



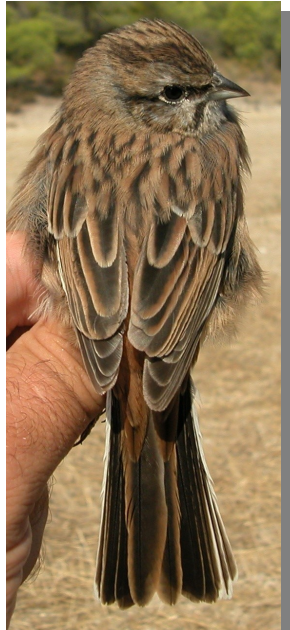
Rock Bunting. Autumn. Adult. Upperpart pattern: left male (12-XI); right female (01-XI).



Rock Bunting. Autumn. Adult. Tail pattern: left male (12-XI); right female (01-XI).



Rock Bunting. Autumn. 1st year. Tail pattern: left male (12-X); right female (12-X).



Rock Bunting. Autumn. 1st year. Upperpart pattern: left male (12-X); right female (12-X).



Rock Bunting. Autumn. Adult. Male: pattern of wing (12-XI).

446 Rock Bunting

[Put your logo here](#)



Rock Bunting. Autumn. Adult. Female: pattern of wing (01-XI).



Rock Bunting. Autumn. 1st year. Male: pattern of wing (12-X).



Rock Bunting. Autumn. 1st year. Female: pattern of wing (12-X).