

445 Cirl Bunting

Put your logo here



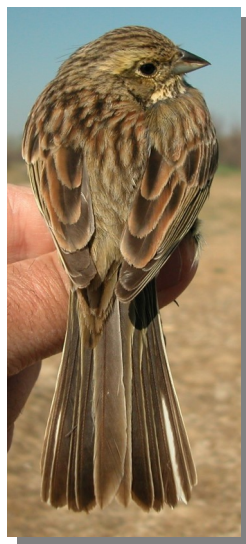
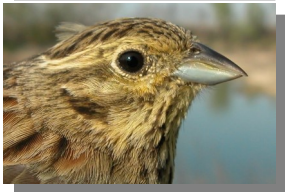
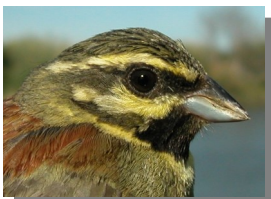
Cirl Bunting. Spring. Adult. Male (25-IV).

CIRL BUNTING (*Emberiza cirlus*)

IDENTIFICATION

14-18 cm. **Adults** with brown upperparts; yellowish underparts; brown-olive rump; flanks with brown tinge; bluish bill. **Male** with black throat and green-grey breast. **Female** without black throat and breast with diffuse streaks. **Juveniles** with greenish lesser coverts.

Cirl Bunting. Adult. Pattern of upperparts and head: top male; bottom female.



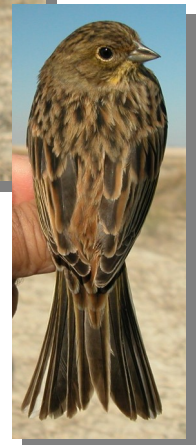
Cirl Bunting. Juvenile. Pattern of head and lesser coverts.

SIMILAR SPECIES

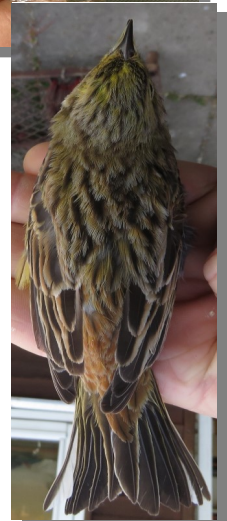
Male is unmistakable. **Female** similar to female **Yellowhammer** which has chestnut rump and a pale patch on nape. **Female Ortolan Bunting** has brown rump and brown-yellowish underparts. **Juveniles Cirl Bunting** are similar to **Rock Bunting** which have grey lesser coverts; **Yellowhammer** have chestnut rump; **Ortolan Bunting** have brown-yellowish throat and breast; **Corn Bunting** is bigger (16-19 mm) and without white on outermost tail feathers.



Yellowhammer. Female



Yellowhammer. Juvenile



445 Cirl Bunting

[Put your logo here](#)



Ortolan Bunting. 1st year

SEXING

In **Spring**, **male** with black chin and throat; breast unstreaked; wing 75-84 mm. **Female** with white-yellowish chin and throat; breast streaked; wing 71-79 mm. After **postbreeding/postjuvenile** moults, **male** with black feathers on chin and throat with white-buff tips; unstreaked breast; reddish upperparts. **Female** with chin and throat buff-yellowish; streaked breast; little or no reddish on upperparts. **Juveniles** cannot be sexed using plumage characteristics.



Ortolan Bunting. Juvenile.



Cirl Bunting. Spring. Sexing. Pattern of head: top male; bottom female.



Rock Bunting. Juvenile



Corn Bunting



Cirl Bunting. Autumn. Sexing. Pattern of head: top male; bottom female.



445 Cirl Bunting

Put your logo here

AGEING

3 types of age can be recognized:

Juvenile similar to **females**; clearly dark streaked; with fresh plumage.

1st year autumn/2nd year spring with moult limits on wing within tertials or between tertials and secondaries; with moult limit on tail if central pair is moulted; unmoulted tail feathers with pointed tips due to wear.

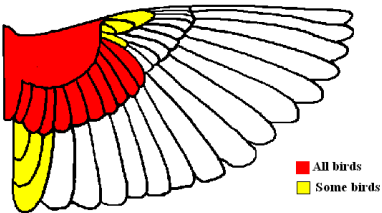
Adult without moult limits on wing; tail feathers with rounded tips.



Cirl Bunting. Ageing. Pattern of breast: left female; right juvenile.

MOULT

Complete **postbreeding** moult, usually finished in October. Partial **postjuvenile** moult including body feathers, lesser, median, most or all greater coverts and sometimes tertials and central tail feathers; usually finished in October. Both types of age have a **prebreeding** moult including only body feathers.



Cirl Bunting. Extent of postjuvenile moult.

PHENOLOGY

I	II	III	IV	V	VI	VII	VIII	IX	X	XI	XII

STATUS IN ARAGON

Resident. Widely distributed throughout the Region, absent from the highest areas of the Pyrenees and the most deforested zones of the Ebro Basin.



Cirl Bunting. Spring. Adult. Female (03-IV).



Cirl Bunting. Spring. 2nd year. Male (02-V).



Cirl Bunting. Spring. 2nd year. Female (02-IV).

445 Cirl Bunting

Put your logo here



Cirl Bunting. Spring. Juvenile (27-VI).



Cirl Bunting. Spring. Adult. Breast pattern: left male (25-IV); right female (03-IV).



Cirl Bunting. Spring. Adult. Head pattern: top male (25-IV); bottom female (03-IV).



Cirl Bunting. Spring. Breast pattern: top left 2nd year male (02-V); top right 2nd year female (02-IV); left juvenile (27-VI).



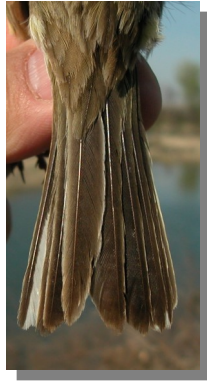
Cirl Bunting. Spring. Head pattern: top 2nd year male (02-V); middle 2nd year female (02-IV); bottom juvenile (27-VI).



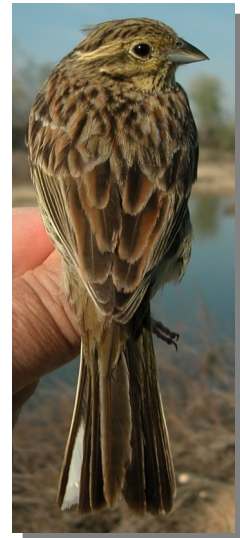
Cirl Bunting. Spring. Adult. Tail pattern: left male (25-IV); right female (03-IV).

445 Cirl Bunting

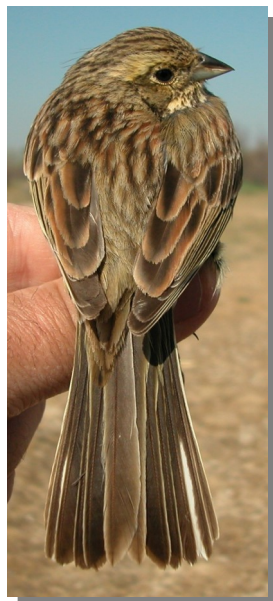
Put your logo here



Cirl Bunting. Spring. Tail pattern: top left 2nd year male (02-V); top right 2nd year female (02-IV); left juvenile (27-VI).



Cirl Bunting. Spring. Upperparts pattern: top left 2nd year male (02-V); top right 2nd year female (02-IV); left juvenile (27-VI).



Cirl Bunting. Spring. Adult. Upperparts pattern: left male (25-IV); right female (03-IV).



Cirl Bunting. Spring. Adult. Male: pattern of wing (25-IV).

445 Cirl Bunting

Put your logo here



Cirl Bunting. Spring. Adult. Female: pattern of wing (03-IV).



Cirl Bunting. Spring. Juvenile: pattern of wing (27-VI).



Cirl Bunting. Spring. 2nd year. Male: pattern of wing (02-V).



Cirl Bunting. Autumn. Adult. Male (10-X).



Cirl Bunting. Spring. 2nd year. Female: pattern of wing (02-IV).



Cirl Bunting. Autumn. Adult. Female (26-XII).

445 Cirl Bunting

[Put your logo here](#)



Cirl Bunting. Autumn. 1st year. Male (25-IX).



Cirl Bunting. Autumn. 1st year. Head pattern: top male (25-IX); bottom female (27-XI).



Cirl Bunting. Autumn. 1st year. Female (27-XI).



Cirl Bunting. Autumn. Adult. Breast pattern: left male (10-X); right female (26-XII).



Cirl Bunting. Autumn. Adult. Head pattern: top male (10-X); bottom female (26-XII).



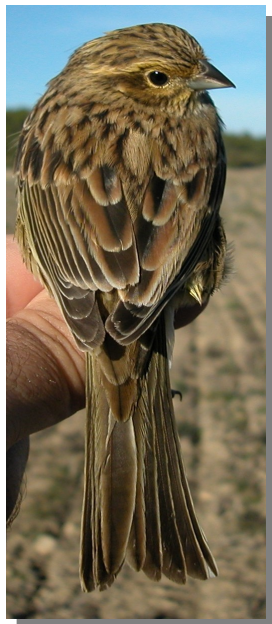
Cirl Bunting. Autumn. 1st year. Breast pattern: left male (25-IX); right female (27-XI).

445 Cirl Bunting

Put your logo here



Cirl Bunting. Autumn. Adult. Upperparts pattern: left male (10-X); right female (26-XII).



Cirl Bunting. Autumn. 1st year. Upperparts pattern: left male (25-IX); right female (27-XI).



Cirl Bunting. Autumn. Adult. Tail pattern: left male (10-X); right female (26-XII).



Cirl Bunting. Autumn. 1st year. Tail pattern: left male (25-IX); right female (27-XI).



Cirl Bunting. Autumn. Adult. Male: pattern of wing (10-XI).

445 Cirl Bunting

Put your logo here



Cirl Bunting. Autumn. Adult. Female: pattern of wing (26-XII).



Cirl Bunting. Autumn. 1st year. Male: pattern of wing (25-IX).



Cirl Bunting. Autumn. 1st year. Female: pattern of wing (27-XI).