

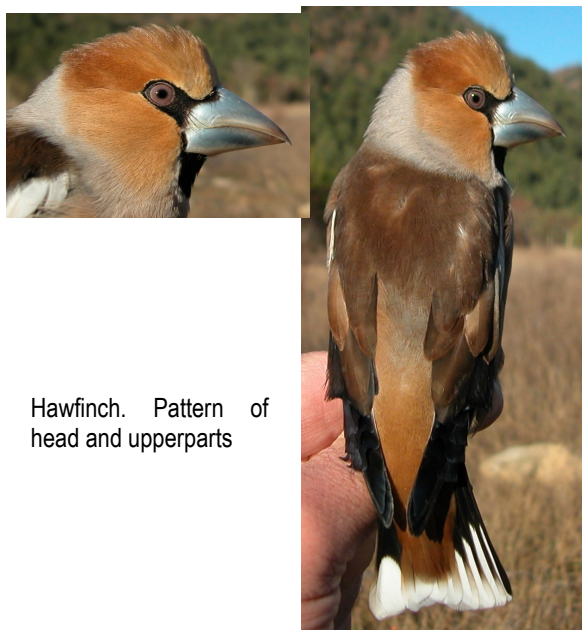


Hawfinch. Spring. Adult. Male (15-III).

HAWFINCH (*Coccothraustes coccothraustes*)

IDENTIFICATION

17-18 cm. Big and conical bill; head with black line around bill; black bib; brownish upperparts with buff rump; grey vinaceous underparts; tail with black feathers tipped white; wing with white patch on primaries; secondaries with outer black band on **male** and grey on **female**.



Hawfinch. Pattern of head and upperparts

SIMILAR SPECIES

This species is unmistakable.

SEXING

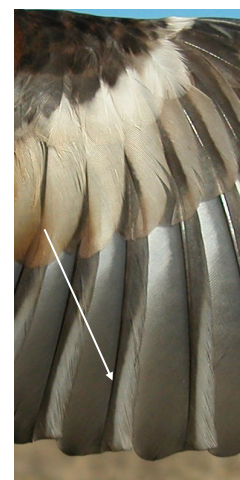
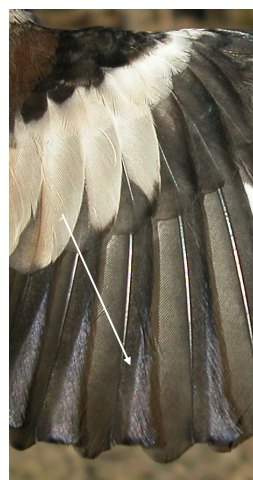
Both sexes with similar pattern, but **male** with bright chestnut on head; outer web of outer secondaries bright black; length of white patch on inner web of the outermost tail feather 17-28 mm. **Female** with dull chestnut on head; outer web of outer secondaries dusky ash-grey; length of white patch on inner web of the outermost tail feather 9-21 mm.



Hawfinch. Spring. Sexing. Pattern of head: top male; bottom female (Photo: Ondej Kauzal).



Hawfinch. Winter. Sexing. Pattern of head: top male; bottom female.



Hawfinch. Sexing. Pattern of secondaries: left male; right female.

AGEING

3 types of age can be recognized:

Juvenile with fresh plumage; head, neck and breast yellowish; underparts speckled dark; chin without black bib.

1st year autumn/2nd year winter with tail feathers worn and pointed (if all unmoulted); if central pair moulted, then with contrast with neighbor feathers; wing with moult limits between moulted and retained greater coverts; if all or none moulted, then limit is between alula and/or tertials (**CAUTION:** not always easy to see). In **males**, outermost tail feather with outer web brownish-grey with an off-white spot on tip (**CAUTION:** some **males** do not have it); 5th primary with outer web about 3,5-5,8 mm width; tip of 7th primary sometimes with less gloss than in **adults**; tip of 8th primary never with gloss. In **females**, 5th primary with outer web about 3-4 mm width; tip of 7th primary with gloss only in few birds; tip of 8th primary never with gloss.

Adult without moult limits on wing and tail; tail feathers fresh and squared. In **males** the outermost tail feather with outer web black with a pure white spot on tip (**CAUTION:** some **males** do not have it); 5th primary with outer web about 5-7,2 mm width; tip of 7th primary always with deep gloss; tip of 8th primary often with gloss. In **females**, 5th primary with outer web about 4-7,2 mm width; tip of 7th primary always with gloss; tip of 8th primary with gloss only in some birds.



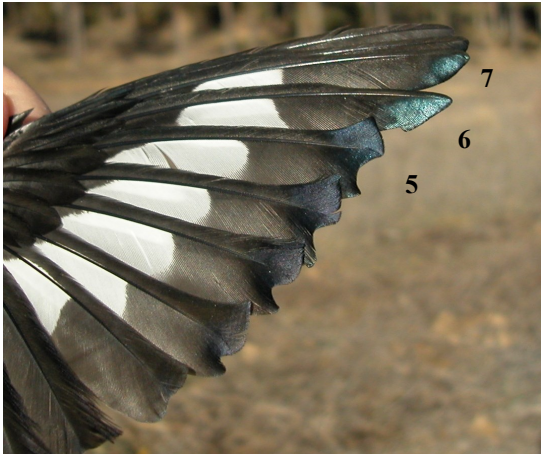
Hawfinch. Ageing. Pattern of head: top adult; bottom juvenile (Photo: Ondrej Kauzal).



Hawfinch. Ageing. Pattern of breast: left adult; right juvenile (Photo: Ondrej Kauzal).



Hawfinch. Male. Ageing. Pattern of tip of the outermost tail feather: top left adult with white spot on tip; top; right adult without white top on it; left 1st year.



Hawfinch. Adult. Male. Ageing: extent of gloss on primaries.



Hawfinch. 1st year. Female. Ageing: extent of gloss on primaries.



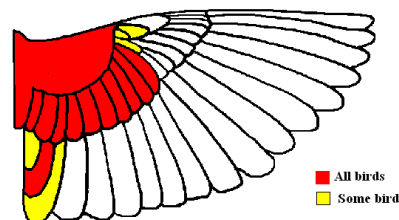
Hawfinch. Adult. Female. Ageing: extent of gloss on primaries.



Hawfinch. 1st year. Male. Ageing: extent of gloss on primaries.

MOULT

Complete **postbreeding** moult, usually finished in October. Partial **postjuvenile** moult involving body feathers, lesser, median and usually all greater coverts; some birds extend their moult to tertials; moult of tail feathers very variable, most moult only the central pair, but some can moult all feathers or none; finished in November.



Hawfinch. Extent of postjuvenile moult.

PHENOLOGY

I	II	III	IV	V	VI	VII	VIII	IX	X	XI	XII

- Summer visitor
- Wintering
- Resident
- On passage



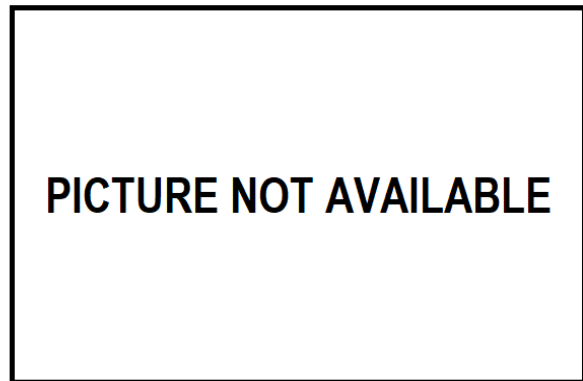
Hawfinch. Spring. Adult. Female (02-V) (Photo: Ondrej Kauzal).



Hawfinch. Spring. Juvenile. Male (16-VII) (Photo: Ondrej Kauzal).



Hawfinch. Spring. 2nd year. Male (15-IV) (Photo: Ondrej Kauzal).



Hawfinch. Spring. Juvenile. Female ().



Hawfinch. Spring. 2nd year. female (15-IV) (Photo: Ondrej Kauzal).



Hawfinch. Spring. Adult. Head pattern: top male (15-III); bottom female (02-V) (Photo: Ondrej Kauzal)

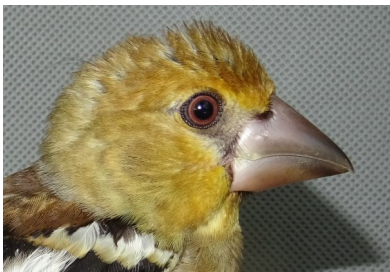
17170 Hawfinch (*Coccothraustes coccothraustes*)



Hawfinch. Spring. 2nd year. Head pattern: top male (15-IV) (Photo: Ondrej Kauzal); bottom female (15-IV) (Photo: Ondrej Kauzal).



Hawfinch. Spring. 2nd year. Breast pattern: left male (15-IV) (Photo: Ondrej Kauzal); right female (15-IV) (Photo: Ondrej Kauzal).



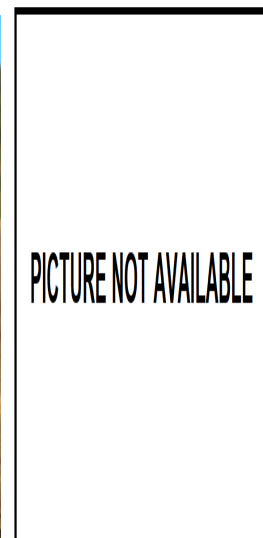
PHawfinch. Spring. Juvenile. Head pattern: top male (16-VII) (Photo: Ondrej Kauzal); bottom female (23-VI) (Photo: Reinhard Vohwinkel).



Hawfinch. Spring. Juvenile. Breast pattern: left male (); right female (16-VII) (Photo: Ondrej Kauzal).

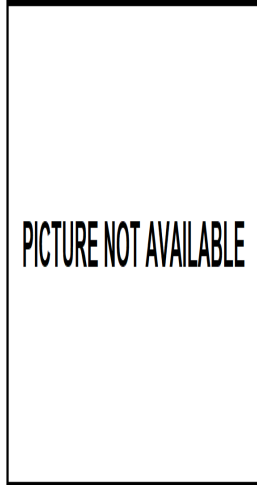
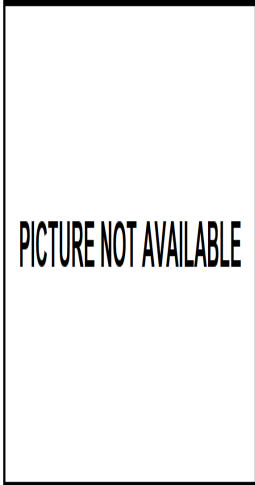


Hawfinch. Spring. Adult. Breast pattern: left male (15-III); right female (02-V) (Photo: Ondrej Kauzal)

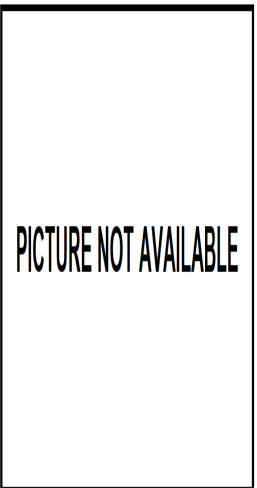
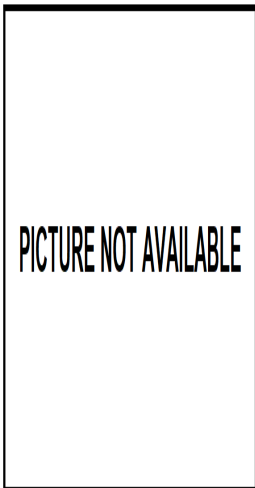


Hawfinch. Spring. Adult. Upperpart pattern: left male (15-III); right female ().

17170 Hawfinch (*Coccothraustes coccothraustes*)



Hawfinch. Spring. 2nd year. Upperpart pattern: left male (); right female ().



Hawfinch. Spring. Juvenile. Upperpart pattern: left male (); right female ().



Hawfinch. Spring. Adult. Tail pattern: left male (15-III); right female (02-V) (Photo: Ondrej Kauzal).



Hawfinch. Spring. 2nd year. Tail pattern: top male (15-IV) (Photo: Ondrej Kauzal); bottom female (15-IV) (Photo: Ondrej Kauzal).



Hawfinch. Spring. Juvenile. Tail pattern: top male (16-VII) (Photo: Ondrej Kauzal); bottom female (01-IX) (Photo: Ondrej Kauzal).



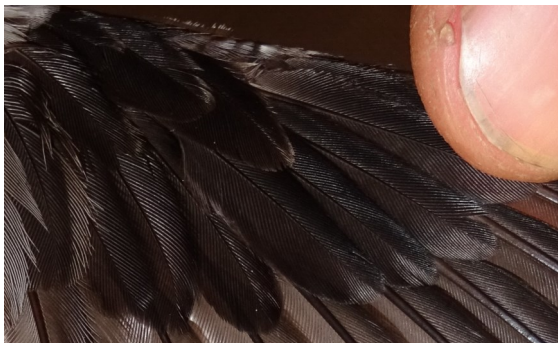
Hawfinch. Spring. Adult. Male: pattern of alula and primary coverts (15-III).



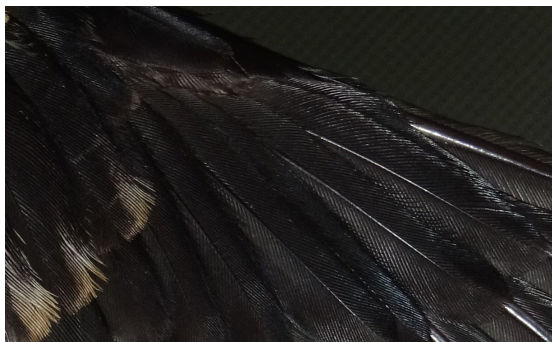
Hawfinch. Spring. Adult. Female: pattern of alula and pri-



Hawfinch. Spring. 2nd year. Male: pattern of alula and primary coverts (15-IV) (Photo: Ondrej Kauzal).



Hawfinch. Spring. 2nd year. Female: pattern of alula and primary coverts (15-IV) (Photo: Ondrej Kauzal).



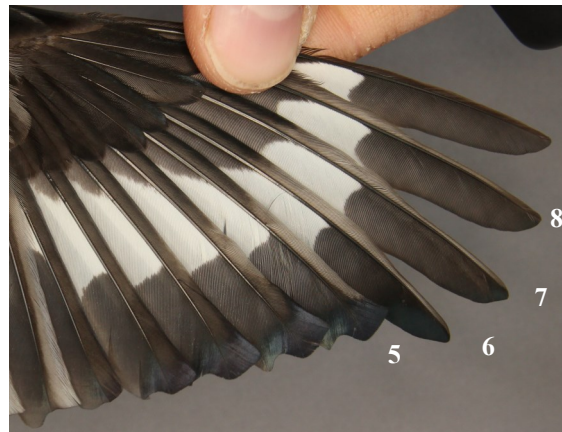
Hawfinch. Spring. Juvenile. Male: pattern of alula and primary coverts (16-VII) (Photo: Ondrej Kauzal).



Hawfinch. Spring. Juvenile. Female: pattern of alula and primary coverts (01-IX) (Photo: Ondrej Kauzal).



Hawfinch. Spring. Adult. Male: pattern of primaries (15-III).



Hawfinch. Spring. Adult. Female: pattern of primaries (02-V) (Photo: Ondrej Kauzal).



Hawfinch. Spring. 2nd year. Male: pattern of primaries (15-IV) (Photo: Ondrej Kauzal).



Hawfinch. Spring. 2nd year. Female: pattern of primaries (15-IV) (Photo: Ondrej Kauzal).



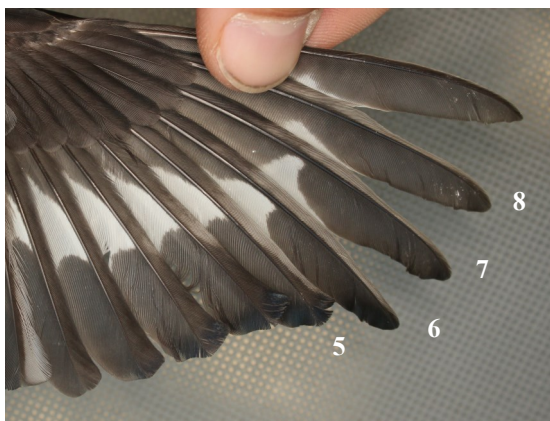
Hawfinch. Spring. Adult. Male: pattern of secondaries (15-III).



Hawfinch. Spring. Juvenile. Male: pattern of primaries (16-VII) (Photo: Ondrej Kauzal).



Hawfinch. Spring. Adult. Female: pattern of secondaries (02-V) (Photo: Ondrej Kauzal).



Hawfinch. Spring. Juvenile. Female: pattern of primaries (01-IX) (Photo: Ondrej Kauzal).



Hawfinch. Spring. 2nd year. Male: pattern of secondaries (15-IV) (Photo: Ondrej Kauzal).



Hawfinch. Spring. 2nd year. Female: pattern of secondaries (15-IV) (Photo: Ondrej Kauzal).



Hawfinch. Spring. Juvenile. Male: pattern of secondaries (16-VII) (Photo: Ondrej Kauzal).



Hawfinch. Spring. Juvenile. Female: pattern of secondaries (01-IX) (Photo: Ondrej Kauzal).



Hawfinch. Spring. Adult. Male: pattern of wing (15-III)



Hawfinch. Spring. Adult. Female: pattern of wing (02-V) (Photo: Ondrej Kauzal).



Hawfinch. Spring. 2nd year. Male: pattern of wing (15-IV) (Photo: Ondrej Kauzal).



Hawfinch. Spring. 2nd year. Female: pattern of wing (15-IV) (Photo: Ondrej Kauzal).

17170 Hawfinch (*Coccothraustes coccothraustes*)



Hawfinch. Spring. Juvenile. Male: pattern of wing (16-VII)
(Photo: Ondrej Kauzal).



Hawfinch. Adult. Female (10-I).



Hawfinch. Spring. Juvenile. Female: pattern of wing (01-IX)
(Ondrej Kauzal).



Hawfinch. 1st year. Male (29-XII).



Hawfinch. Winter. Adult. Male (26-XII).



Hawfinch. 1st year. Female (26-XII).

17170 Hawfinch (*Coccothraustes coccothraustes*)



Hawfinch. Adult. Head pattern: top male (26-XII); bottom female (10-I).



Hawfinch. 1st year. Head pattern: top male (29-XII); bottom female (26-XII).



Hawfinch. 1st year. Breast pattern: left male (29-XII); right female (26-XII).



Hawfinch. Adult. Upperparts pattern: left male (26-XII); right female (10-I).



Hawfinch. Adult. Breast pattern: left male (26-XII); right female (10-I).



Hawfinch. 1st year. Upperparts pattern: left male (29-XII); right female (29-XII).



Hawfinch. Adult. Tail pattern: left male (26-XII); right female (10-I).



Hawfinch. 1st year. Tail pattern: left male (29-XII); right female (26-XII).



Hawfinch. Winter. Adult. Male: pattern of alula and primary coverts (26-XII)



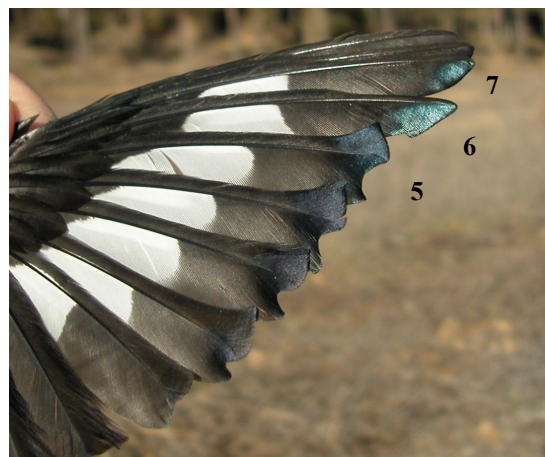
Hawfinch. Winter. Adult. Female: pattern of alula and primary coverts (10-I).



Hawfinch. Winter. 1st year. Male: pattern of alula and primary coverts (29-XII).



Hawfinch. Winter. 1st year. Female: pattern of alula and primary coverts (30-X).



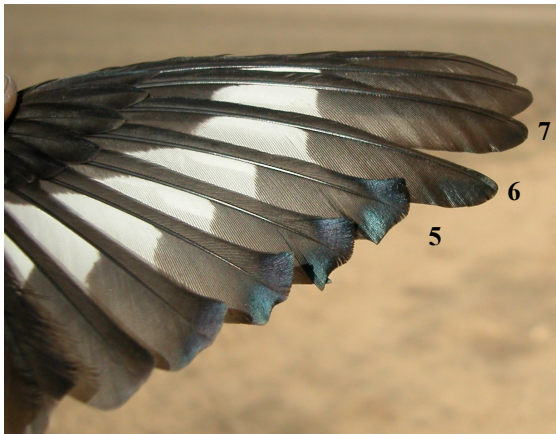
Hawfinch. Adult. Male: pattern of primaries (26-XII).



Hawfinch. Adult. Female: pattern of primaries (10-I).



Hawfinch. Adult. Male: pattern of secondaries (26-XII).



Hawfinch. 1st year. Male: pattern of primaries (29-XII).



Hawfinch. Adult. Female: pattern of secondaries (10-I).



Hawfinch. 1st year. Female: pattern of primaries (26-XII).



Hawfinch. 1st year. Male: pattern of secondaries (29-XII).



Hawfinch. 1st year. Female: pattern of secondaries(26-XII).



Hawfinch. 1st year. Female: pattern of wing (26-XII).



Hawfinch. Adult. Male: pattern of wing (26-XII).



Hawfinch. Adult. Female: pattern of wing (10-I).



Hawfinch. 1st year. Male: pattern of wing (29-XII).