

**17100 Eurasian Bullfinch** (*Pyrrhula pyrrhula*)



Bullfinch. Male (15-VII).

**EURASIAN BULLFINCH** (*Pyrrhula pyrrhula*)

**IDENTIFICATION**

14-17 cm. **Male** with black crown and bib; grey upperparts; white rump; dark wings with one white bar; cheek and underparts reddish. **Female** similar to **male** but with brownish upperparts and greyish underparts. **Juveniles** without black crown.



Bullfinch. Pattern of head: top male; bottom female.

**SIMILAR SPECIES**

This species is unmistakable.

**SEXING**

**Male** with reddish underparts. **Female** with brown-greyish underparts. **Juveniles** cannot be sexed using plumage characteristics.



Bullfinch. Sexing. Pattern of breast: left male; bottom female.

**AGEING**

3 types of age can be recognized:

**Juvenile** without black crown or bib; very fresh plumage.

**1st year autumn/2nd year spring** similar to **adults** but with moult limit on wing between moulted inner greater coverts, darker and with white tips, and the outer **juvenile** retained, brownish and with buff tips; as they rarely moult the carpal feather, this is nearly always **juvenile** with buff tip.

**Adult** with black crown and bib; wing with one age of feathers, without moult limits; carpal feather with white tip.

**CAUTION:** at any age the three outermost greater coverts are shorter and exhibit narrower fringes than the inner ones and may resemble a moult limit.



Bullfinch. Ageing. Pattern of head: top adult female; bottom juvenile.

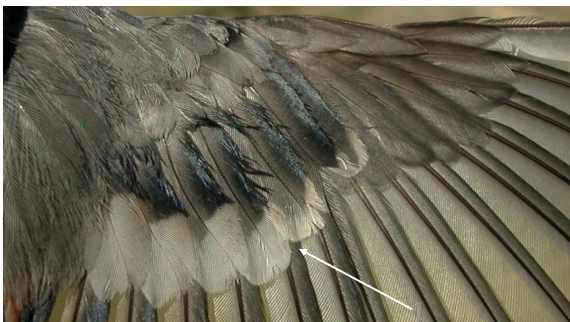
**17100 Eurasian Bullfinch** (*Pyrrhula pyrrhula*)



Bullfinch. Ageing. Pattern of crown: left adult female; right juvenile.



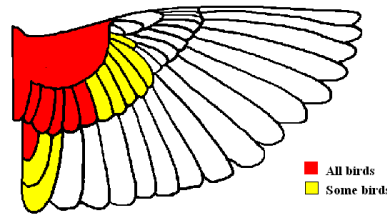
Bullfinch. Ageing. Pattern of greater coverts: left adult; right juvenile.



Bullfinch. Ageing. Moulting limit on wing coverts: top adult; bottom 1st year.

**MOULT**

Complete **postbreeding** moult, usually finished in October but as late as December. Partial **postjuvenile** moult including body feathers, lesser and median coverts and some greater coverts; some birds can moult all greater coverts, tertials and some inner secondaries; finished between October and December.



Bullfinch. Extent of postjuvenile moult.

**PHENOLOGY**

I	II	III	IV	V	VI	VII	VIII	IX	X	XI	XII

- Summer visitor
- Wintering
- Resident
- On passage

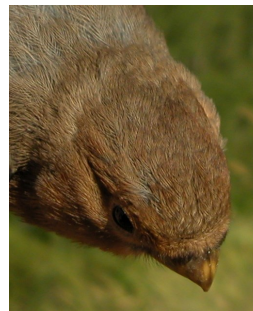


Bullfinch. Female (15-VII)

**17100 Eurasian Bullfinch** (*Pyrrhula pyrrhula*)



Bullfinch. Juvenile (15-VII)



Bullfinch. Crown pattern: top left male (15-VII); top right female (15-VII); left juvenile (15-VII).



Bullfinch. Head pattern: top left male (15-VII); top right female (15-VII); left juvenile (15-VII).



Bullfinch. Breast pattern: top left male (15-VII); top right female (15-VII); left juvenile (15-VII).



Bullfinch. Upperpart pattern: top left male (15-VII); top right female (15-VII); left juvenile (15-VII).

**17100 Eurasian Bullfinch** (*Pyrrhula pyrrhula*)

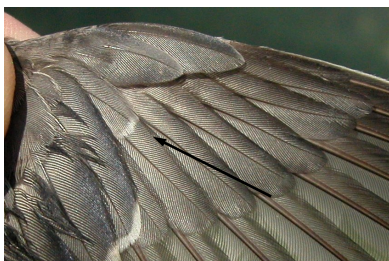


PICTURE NOT AVAILABLE

Bullfinch. Summer. Adult. Wear and pattern of tail: left male (22-VII); right female ().



Bullfinch. Summer. Wear and pattern of tail: top left 2nd year male (15-VII); top right 2nd year female (15-VII); left juvenile (15-VII).



Bullfinch. Adult. Pattern of alula and carpal covert: top male (22-VII); bottom female ().

PICTURE NOT AVAILABLE



Bullfinch. Pattern of alula and carpal covert: top 2nd year male (15-VII); middle 2nd year female (15-VII); bottom juvenile (15-VII).



Bullfinch. Adult. Male: pattern of wing (22-VII).

PICTURE NOT AVAILABLE



Bullfinch. Adult. Female: pattern of wing ().

Bullfinch. Juvenile: pattern of wing (15-VII).



Bullfinch. 2nd year. Male: pattern of wing (15-VII).



Bullfinch. 2nd year. Female: pattern of wing (15-VII).