

05320 Citril Finch (*Carduelis citrinella*)



Citril Finch. Spring. 2nd year. Male (15-VII).

CITRIL FINCH (*Carduelis citrinella*)

IDENTIFICATION

11-13 cm. Yellow green plumage, with nape and side of neck grey; two green bars on wings; yellow rump; dark brown tail.



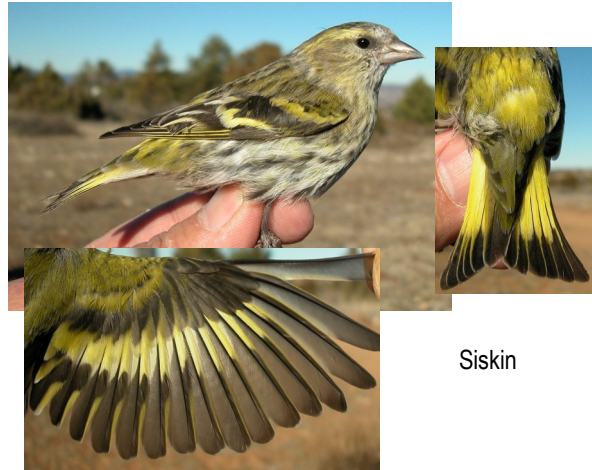
Citril Finch. Pattern of head and wing.

SIMILAR SPECIES

Among yellow and green Finches, **Greenfich** is bigger (14-15 cm). **Siskin** has yellow patches on tail feathers. **Serin** has flanks with well defined streaks.



Greenfich



Siskin



Serin

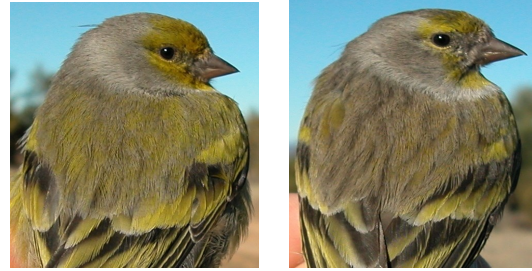
SEXING

In **adults**, **male** with yellow throat; greenish mantle; head with a big yellow patch; undertail coverts bright yellow. **Female** with yellow-grey or grey throat; dull grey-brown mantle; head with a small yellow patch; undertail coverts white with yellowish tinge (**CAUTION:** the amount of yellow on head is not always useful for sexing). **Juveniles** can be sexed by size and plumage pattern (**CAUTION:** not always possible due to overlap): **male** with brown-yellowish plumage. **Female** with brown-greyish plumage.



Citril Finch. Sexing. Adult. Pattern of forehead: left male; right female.

05320 Citril Finch (*Carduelis citrinella*)



Citril Finch. Sexing. Adult. Pattern of upperpart: left male; right female.

Citril Finch. Sexing. Juvenile. Pattern of forehead: left male; right female.



Citril Finch. Sexing. Juvenile. Pattern of upperpart: left male; right female.



Citril Finch. Sexing. Adult. Pattern of head: top male; bottom female.



Citril Finch. Sexing. Juvenile. Pattern of head: top male; bottom female.



AGEING

3 types of age can be recognized:

Juvenile less green-yellowish than **adults**; mantle strongly streaked brown; underparts streaked brown, with some yellowish tinge; pointed tail feathers; fresh plumage.

1st year autumn/2nd year spring with moult limit on wings between moulted greater coverts, with greenish edges. and **juvenile** retained, with whitish edges; if all greater coverts moulted, then the limit is between greater coverts and primary coverts, within alula feathers, between tertials and secondaries and/or between tail feathers; with pointed tail feathers if unmoulted; in **summer** with worn plumage.

Adult without or just with a faint streaked on mantle; unstreaked yellow underparts; without moult limits on wing and tail; tail feathers rounded; in **summer** with worn plumage.



Citril Finch. Ageing. Male. Pattern of head and breast: left adult; right juvenile.

05320 Citril Finch (*Carduelis citrinella*)



Citril Finch. Ageing. Female. Pattern of head and breast: left adult; right juvenile.



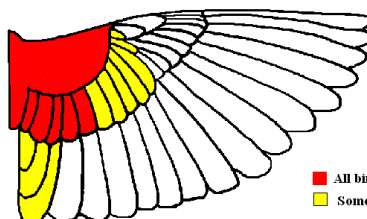
Citril Finch. Ageing. Male. Pattern of upperpart: left adult; right juvenile.



Citril Finch. Ageing. Female. Pattern of upperpart: left adult; right juvenile.

MOULT

Complete **postbreeding** moult, usually finished in October. Partial **postjuvenile** moult including body feathers, lesser and usually median coverts and none or most of greater coverts; some birds can moult all greater coverts, tertials and tail feathers; usually finished late September.



Citril Finch. Extent of postjuvenile moult.

■ All birds
■ Some birds

PHENOLOGY

I	II	III	IV	V	VI	VII	VIII	IX	X	XI	XII

■ Summer visitor ■ Resident
■ Wintering ■ On passage



Citril Finch. Spring. Adult. Female ().

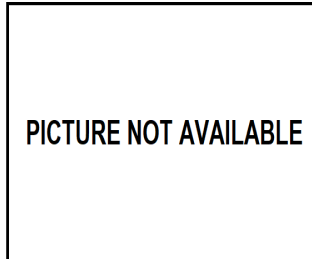
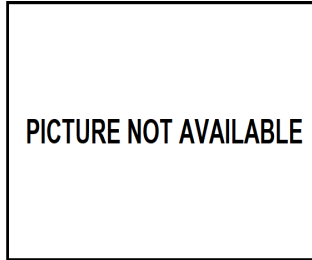


Citril Finch. Spring. Adult. Male ().

05320 Citril Finch (*Carduelis citrinella*)



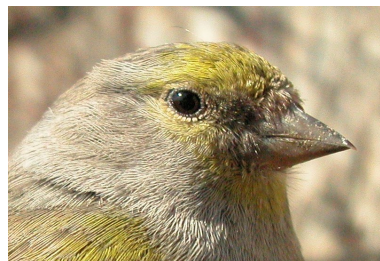
Citril Finch. Spring. 2nd year. Female (05-III).



Citril Finch.
Spring. Adult.
Head pattern:
top male ();
bottom female
().



Citril Finch. Spring. Juvenile. Male (20-VI).



Citril Finch.
Spring. 2nd
year. Head
pattern: top
male (15-VII);
bottom female
(05-III).

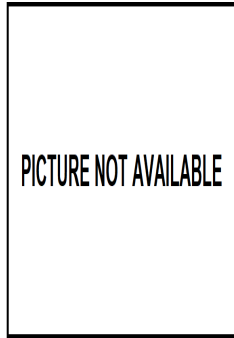
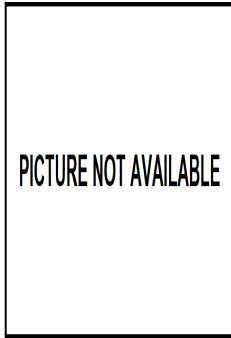


Citril Finch. Spring. Juvenile. Female (03-VII).

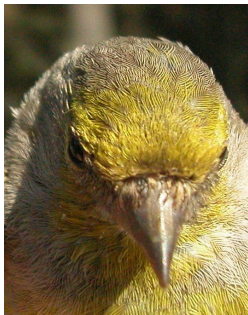


Citril Finch.
Spring. Juveni-
le. Head pat-
tern: top male
(20-VI); bottom
female (03-
VII).

05320 Citril Finch (*Carduelis citrinella*)



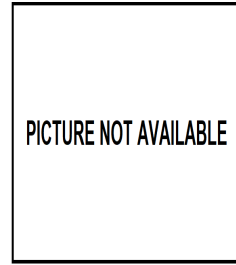
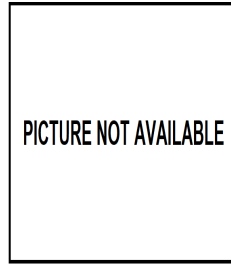
Citril Finch. Spring. Adult. Crown pattern: left male (); right female ().



Citril Finch. Spring. 2nd year. Crown pattern: left male (15-VII); right female (05-III).



Citril Finch. Spring. Juvenile. Crown pattern: left male (20-VI); right female (03-VII).



Citril Finch. Spring. Adult. Breast pattern: left male (); right female ().



Citril Finch. Spring. 2nd year. Breast pattern: left male (15-VII); right female (05-III).



Citril Finch. Spring. Juvenile. Breast pattern: left male (20-VI); right female (03-VII).



Citril Finch. Spring. Adult. Pattern of flank: top male (); bottom female ().

05320 Citril Finch (*Carduelis citrinella*)



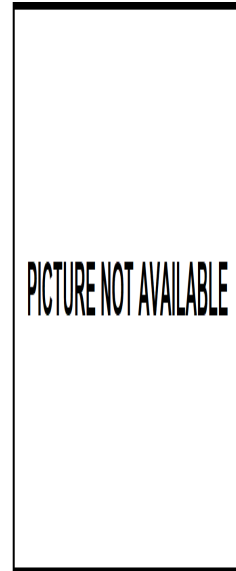
Citril Finch. Spring. 2nd year. Pattern of flank: top male (); bottom female ().



Citril Finch. Spring. Juvenile. Pattern of flank: top male (20-VI); bottom female (03-VII).



Citril Finch. Spring. Adult. Upperparts pattern: left male (); right female ().

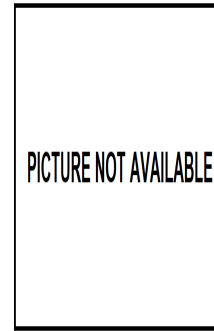
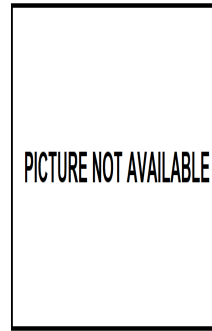
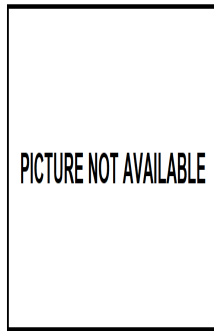
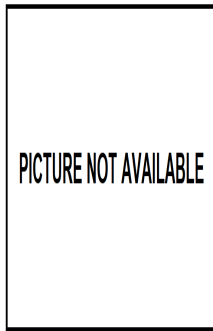


Citril Finch. Spring. 2nd year. Upperparts pattern: left male (15-VII); right female ().



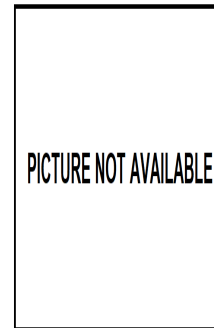
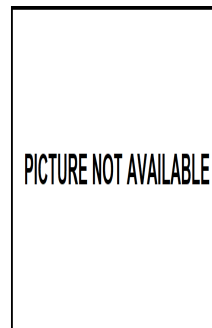
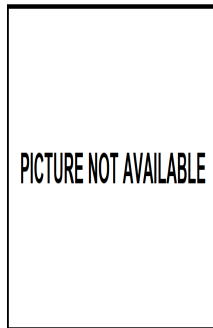
Citril Finch. Spring. Juvenile. Upperparts pattern: left male (20-VI); right female (03-VII).

05320 Citril Finch (*Carduelis citrinella*)



Citril Finch. Spring. Adult. Tail pattern: left male (); right female ().

Citril Finch. Spring. Adult. Pattern of undertail coverts: left male (); right female ().



Citril Finch. Spring. 2nd year. Tail pattern: left male (15-VII); right female ().

Citril Finch. Spring. 2nd year. Pattern of undertail coverts: left male (); right female ().



Citril Finch. Spring. Juvenile. Tail pattern: left male (20-VI); right female (03-VII).

Citril Finch. Spring. Juvenile. Pattern of undertail coverts: left male (20-VI); right female (03-VII).

PICTURE NOT AVAILABLE

Citril Finch. Spring. Adult. Male: pattern of wing coverts ().

PICTURE NOT AVAILABLE

Citril Finch. Spring. 2nd year. Female: pattern of wing coverts ().

PICTURE NOT AVAILABLE

Citril Finch. Spring. Adult. Female: pattern of wing coverts ().



Citril Finch. Spring. Juvenile. Male: pattern of wing coverts (20-VI).



Citril Finch. Spring. 2nd year. Male: pattern of wing coverts (15-VII).



Citril Finch. Spring. Juvenile. Female: pattern of wing coverts (03-VII).

PICTURE NOT AVAILABLE

Citril Finch. Spring. Adult. Male: pattern of wing ().

PICTURE NOT AVAILABLE

Citril Finch. Spring. Adult. Female: pattern of wing ().



Citril Finch. Spring. 2nd year. Male: pattern of wing (15-VII).



Citril Finch. Spring. 2nd year. Female: pattern of wing (05-III).



Citril Finch. Spring. Juvenile. Male: pattern of wing (20-VI).



Citril Finch. Spring. Juvenile. Female: pattern of wing (03-VII).

05320 Citril Finch (*Carduelis citrinella*)



Citril Finch. Autumn. Adult. Male (19-XII).



Citril Finch. Autumn. 1st year. Female (19-XII).



Citril Finch. Autumn. Adult. Female (29-XII).



Citril Finch. Autumn. Adult. Head pattern: top male (19-XII); bottom female (29-XII).



Citril Finch. Autumn. 1st year. Male (19-XII).



Citril Finch. Autumn. 1st year. Head pattern: top male (19-XII); bottom female (19-XII).

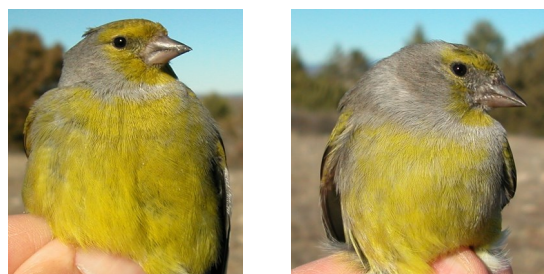
05320 Citril Finch (*Carduelis citrinella*)



Citril Finch. Autumn. Adult. Crown pattern: left male (19-XII); right female (29-XII).



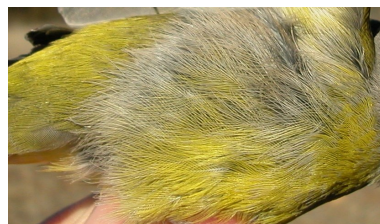
Citril Finch. Autumn. 1st year. Crown pattern: left male (19-XII); right female (19-XII).



Citril Finch. Autumn. Adult. Breast pattern: left male (19-XII); right female (29-XII).



Citril Finch. Autumn. 1st year. Breast pattern: left male (19-XII); right female (19-XII).



Citril Finch. Autumn. Adult. Flank pattern: top male (19-XII); bottom female (29-XII).



Citril Finch. Autumn. 1st year. Flank pattern: top male (19-XII); bottom female (19-XII).



Citril Finch. Autumn. Adult. Upperparts pattern: left male (19-XII); right female (29-XII).

05320 Citril Finch (*Carduelis citrinella*)



Citril Finch. Autumn. 1st year. Upperparts pattern: left male (19-XII); right female (19-XII).



Citril Finch. Autumn. Adult. Tail pattern: left male (19-XII); right female (29-XII).



Citril Finch. Autumn. 1st year. Tail pattern: left male (19-XII); right female (19-XII).



Citril Finch. Autumn. Adult. Pattern of undertail coverts: left male (19-XII); right female (29-XII).



Citril Finch. Autumn. 1st year. Pattern of undertail coverts: left male (19-XII); right female (19-XII).



Citril Finch. Autumn. Adult. Male: pattern of wing coverts (19-XII).



Citril Finch. Autumn. Adult. Female: pattern of wing covers (19-XII).



Citril Finch. Autumn. 1st year. Male: pattern of wing covers (19-XII).



Citril Finch. Autumn. 1st year. Female: pattern of wing covers (29-XII).



Citril Finch. Autumn. Adult. Male: pattern of wing (19-XII).



Citril Finch. Autumn. Adult. Female: pattern of wing (29-XII).



Citril Finch. Autumn. 1st year. Male: pattern of wing (19-XII).



Citril Finch. Autumn. 1st year. Female: pattern of wing (19-XII).