

16380 Brambling (*Fringilla montifringilla*)

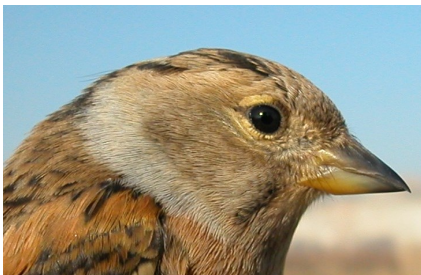
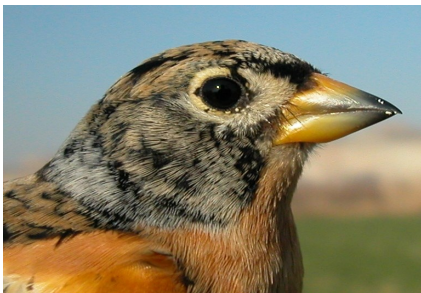


Brambling. Adult. Male (16-XII).

BRAMBLING (*Fringilla montifringilla*)

IDENTIFICATION

14-16 cm. **Male** in **winter** with head and mantle feathers with black base and rusty tips. **Female** with head and mantle feathers with grey bases. **Both sexes** have white rump and rusty-yellow lesser coverts and breast.



Brambling. Pattern of head: top male; bottom female.

SIMILAR SPECIES

Female recalls a **female Chaffinch**, without rusty-yellow patches on wing and breast.

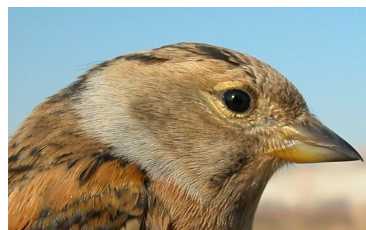


Chaffinch. Female.

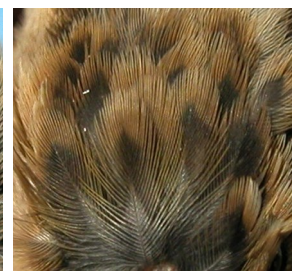
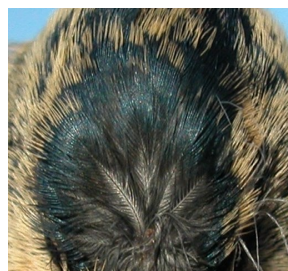


SEXING

In **autumn-winter**, **male** with crown feathers with black base and rusty tip; yellow lesser coverts without dark tips or with just a little. **Female** with crown feathers with grey base; lesser coverts yellowish with dark fringes.



Brambling. Sexing. Pattern of head: top male; bottom female.



Brambling. Sexing. Pattern of crown feathers: left male; right female.



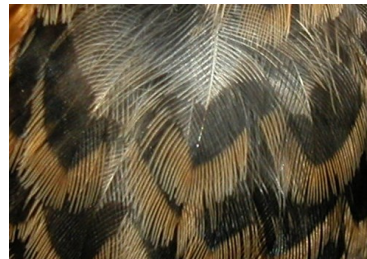
Brambling. Sexing. Pattern of lesser coverts: top male; bottom female.

AGEING

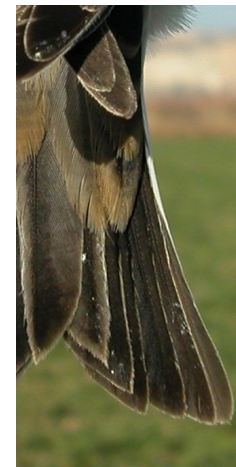
Only 2 types of age can be recognized since this species doesn't breed in Aragon:

1st year autumn/2nd year winter in **males** with moult limit between moulted black greater coverts and grey **juvenile** retained; primary coverts grey contrasting with the black moulted greater coverts; feathers of mantle with black wedge-shaped spots; most of the birds have black spots on lesser coverts; if tail feathers unmoulted, then with pointed tips. In **females** it is sometimes difficult to see the moult limit between the darker inner moulted greater coverts and the rest of retained **juvenile** feathers; if tail feathers unmoulted, then with pointed tips.

Adult in **males** with wing coverts uniformly dark; feathers of mantle with rounded black spots; most of the birds without black spots on lesser coverts; tail feathers with rounded tips. In **females** without moult limit on wing feathers; tail feathers with rounded tips.



Brambling. Male. Ageing. Pattern of mantle feathers: top adult; bottom 1st year.



Brambling. Ageing. Wear of tail feathers: left adult; right 1st year.



Brambling. Ageing. Male. Moult limit on wing coverts: top adult; bottom 1st year.

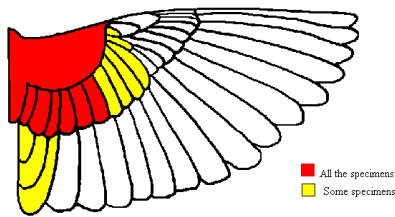
16380 Brambling (*Fringilla montifringilla*)



Brambling. Ageing. Female. Mould limit on wing covers: top adult; bottom 1st year.

MOULT

Complete **postbreeding** moult, finished early September. Partial **postjuvenile** moult including body feathers, lesser and median coverts and a variable number of greater covers (sometimes all), tertials and tail feathers (usually the central pair but some birds moult all the tail); usually finished in September.



Brambling. Extent of postjuvenile moult.

PHENOLOGY

I	II	III	IV	V	VI	VII	VIII	IX	X	XI	XII

- Summer visitor ■ Resident
- Wintering ■ On passage



Brambling. Adult. Female (16-XII).

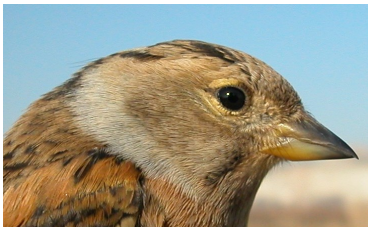


Brambling. 1st year. Male (16-XII).

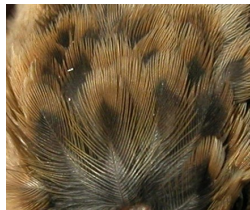


Brambling. 1st year. Female (16-XII).

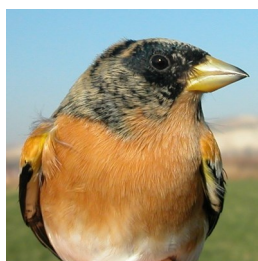
16380 Brambling (*Fringilla montifringilla*)



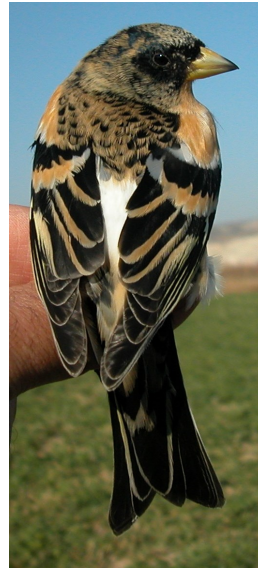
Brambling. Head pattern: top male with no worn plumage (16-XII); middle male with worn plumage (16-XII), bottom female (16-XII).



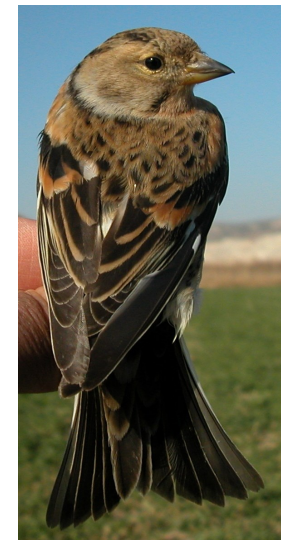
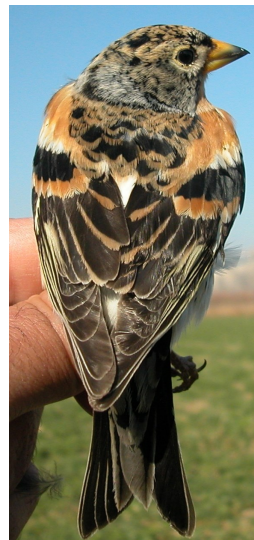
Brambling. Pattern of crown feathers: left male (16-XII); right female (16-XII).



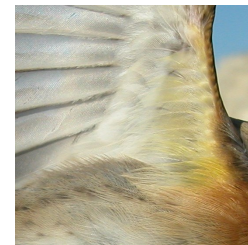
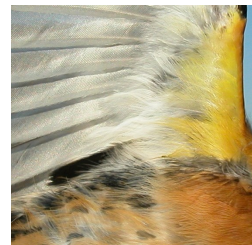
Brambling. Breast pattern: top left male with no worn plumage (16-XII); top right male with worn plumage (16-XII), left female (16-XII).



Brambling. Adult. Upperparts pattern: left male (16-XII); right female (16-XII).

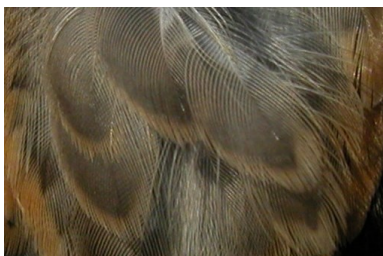


Brambling. 1st year. Upperparts pattern: left male (16-XII); right female (16-XII).



Brambling. Pattern of flank and underwing coverts: left male (16-XII); right female (16-XII).

16380 Brambling (*Fringilla montifringilla*)



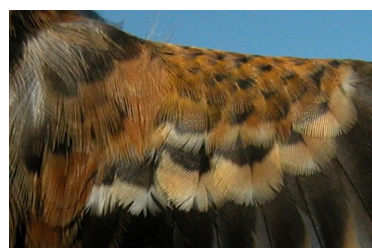
Brambling. Pattern of mantle feathers: top adult male (16-XII); middle 1st year male (16-XII); bottom female (16-XII).



Brambling. Adult. Tail pattern: left male (16-XII); right female (16-XII).



Brambling. 1st year. Tail pattern: left male (16-XII); right female (16-XII).



Brambling. Pattern of lesser coverts: top adult male (16-XII); middle 1st year male (16-XII); bottom female (16-XII).



Brambling. Adult. Male: pattern of wing (16-XII)



Brambling. Adult. Female: pattern of wing (16-XII)



Brambling. 1st year. Male: pattern of wing (16-XII)



Brambling. 1st year. Female: pattern of wing (16-XII)