

**422 Rock Sparrow**

Put your logo here



Rock Sparrow. Winter (21-XII).

**ROCK SPARROW** (*Petronia petronia*)**IDENTIFICATION**

14-16 cm. Dun and streaked upperparts; pale underparts streaked brown-grey; head with a pale supercilium; tail with pale patches on outer feathers; yellow spot on upper breast; bill strong and yellow.



Rock Sparrow. Pattern of breast and tail.

**SIMILAR SPECIES**

This species is unmistakable.

**SEXING**

Plumage of both sexes alike.

**AGEING**

2 types of age can be recognized:

**Juvenile** resembles **adult** but with fresh feathers; without a yellow spot on upper breast.

**Adult** with worn feathers in **summer**; with a yellow spot on upper breast.

After the **postbreeding/postjuvenile** moults, ageing is not possible using plumage pattern.



Rock Sparrow. Ageing. Pattern of breast: left adult; right juvenile.

**MOULT**

Complete **postbreeding** and **postjuvenile** moults, usually finished in November.

**PHENOLOGY**

| I | II | III | IV | V | VI | VII | VIII | IX | X | XI | XII |
|---|----|-----|----|---|----|-----|------|----|---|----|-----|
|   |    |     |    |   |    |     |      |    |   |    |     |

**STATUS IN ARAGÓN**

Resident. Widely distributed throughout the Region, absent from the highest zones of the Pyrenees and the most deforested areas of the Ebro Basin.



Rock Sparrow. Summer. Juvenile (27-VI).

# 422 Rock Sparrow

Put your logo here



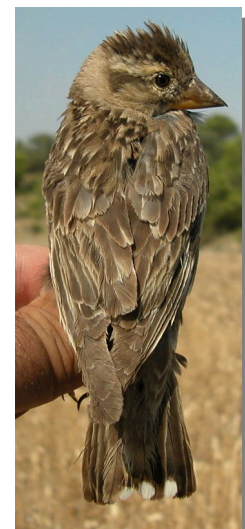
Rock Sparrow. Summer. Adult (03-VII)



Rock Sparrow. Breast pattern: top left in winter (21-XII); top right adult in summer (03-VII); left juvenile (27-VI).



Rock Sparrow. Head pattern: top in winter (21-XII); middle adult in summer (03-VII); bottom juvenile (27-VI).



Rock Sparrow. Wear and upperpart pattern: top left in winter (21-XII); top right adult in summer (03-VII); left juvenile (27-VI).



## 422 Rock Sparrow

[Put your logo here](#)



Rock Sparrow. Summer. Juvenile: pattern of wing (27-VI).



Rock Sparrow. Wear and tail pattern: top left in winter (21-XII); top right adult in summer (03-VII); left juvenile (27-VI).



Rock Sparrow. Winter: pattern of wing (21-XII)



Rock Sparrow. Summer. Adult: pattern of wing (03-VII).