

**15920 Spanish Sparrow** (*Passer hispaniolensis*)



Spanish Sparrow. Spring. Adult. Male (14-IV).

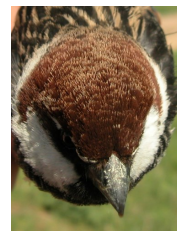
**SPANISH SPARROW** (*Passer hispaniolensis*)

**IDENTIFICATION**

14-15 cm. General dun coloration, with chestnut upperparts and grey-brown underparts. **Male** with chestnut head and crown, throat and breast black which meet black shoulders; black spotted flanks. **Female** with bill long and broad-based; cutting edge of upper mandible curved; gape point roughly level with fore edge of eye, steeper-sloping forehead; broad supercilium both before and behind the eye, pale cream coloured; ear-coverts dark grey, contrasting less with supercilium; shaft streaks on crown feathers dark; breast usually with faint darkish streaks and dots (**CAUTION:** not always); flanks with diffuse streaked (**CAUTION:** not always); mantle sides with pale and pronounced tramlines; uppertail coverts and rump feathers usually with faint darkish shaft streaks; undertail coverts with diffuse greyish centres; tertials with pale edges merging slightly more with less blackish centres; lower scapulars with diffuse olive-brown inner webs and buffy outer webs; tips of median wing coverts very white. **Juveniles** very similar to **female**.



Spanish Sparrow. Winter. Male. Pattern of head and crown.



Spanish Sparrow. Spring. Male. Pattern of head, crown and flank.



Spanish Sparrow. Female. Pattern of head, breast, feathers of crown, flank, upperpart, upertail coverts, tertials, undertail coverts and wing median coverts.



**15920 Spanish Sparrow** (*Passer hispaniolensis*)

**SIMILAR SPECIES**

**Female** looks like a female **Chaffinch**, with white on shoulders and tail. **Male** recalls a **Tree Sparrow**, which is smaller, has black cheek and lacks grey on head. The **male** looks like to the **House Sparrow** one, but easy to separate in **spring** due to his grey crown and unstreaked flanks, but more difficult in **winter** since these differences are hidden; **females** of both species are very similar and frequently indistinguishable due to overlap of characters: typical **House Sparrow female** can be recognized by bill short and narrow-based; cutting edge of upper mandible less curved; gape point ending slightly before eye; squared forehead; diffuse supercilium only behind the eye, grey-browed coloured; ear-coverts grey-sand coloured, pale and with great contrast with supercilium; shaft streaks on crown feathers pale and uniform; breast without faint darkish streaks and dots; flanks without diffuse streaked, mantle sides with darker and worse-pronounced tramlines; uppertail coverts and rump feathers usually without faint darkish shaft streaks; undertail coverts with narrow greyish centres often almost restricted to shaft area; tertials with more brown-reddish edges; lower scapulars with largely blackish-brown inner webs contrasting with buff-sandy outers, tips of median wing coverts no very white.

Chaffinch.  
Female



Tree Sparrow.



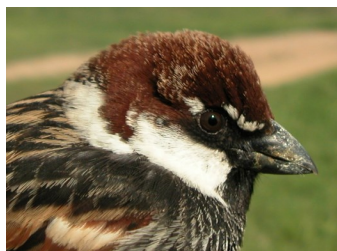
House Sparrow. Male. Top left pattern of head in spring; top right pattern of head in winter; left flank.



House Sparrow. Female. Pattern of head, breast, feathers of crown, flank, upperpart, undertail coverts, tertials, uppertail coverts and wing median coverts.

**SEXING**

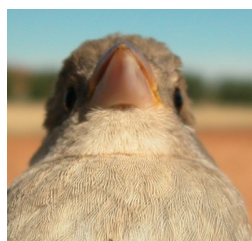
**Male** with chestnut head, black bib and throat and intense chestnut lesser coverts. **Female** with duller aspect, lacks black on throat and breast and lesser coverts are light brown. Some **juvenile males** are recognized before moult because they have a dark patch on throat, but some also with pale throat like **females**.



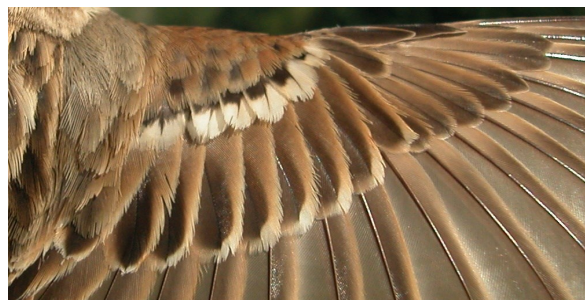
Spanish Sparrow. Spring. Sexing. Pattern of head: top male; bottom female.



Spanish Sparrow. Winter. Sexing. Pattern of head: top male; bottom female.



Spanish Sparrow. Juvenile. Sexing. Pattern of chin: left male; right male/female.



Spanish Sparrow. Adult. Sexing. Pattern of wing coverts: top male; bottom female.

**AGEING**

3 types of age for **males** and 2 for **females** can be recognized:

**Juvenile** resembles a **female** but with loose feathers and least marked colours; with fresh feathers.

**1st year autumn/2nd year spring** only in **males** with proximal half of median coverts black, the distal half is white with black shaft; narrow brown edge on median alula; in **winter** lores with dark grey colour (**CAUTION:** differences in colour of head feathers disappear with wear so they are not useful in **spring/summer**).

**Adult female** with worn and compact plumage, with contrasted colours in **spring/summer**. **Male** with proximal half of median coverts virtually all white, the distal half with white shaft; broad rufous edge on median alula; in **winter** with black lores.

After the **postbreeding/postjuvenile** moults, ageing **females** is not possible using plumage pattern.



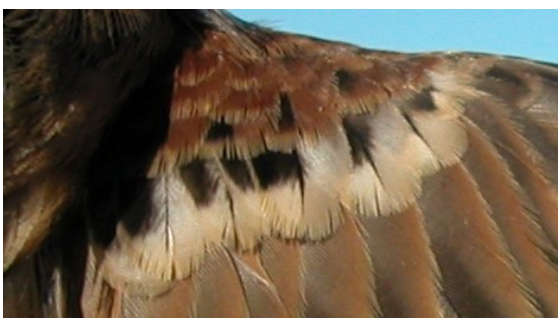
**15920** Spanish Sparrow (*Passer hispaniolensis*)



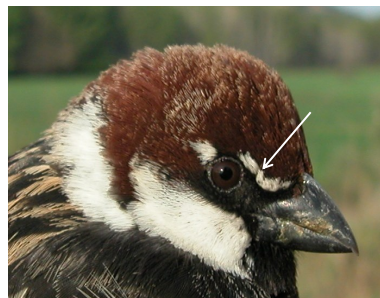
Spanish Sparrow. Ageing. Wear of plumage: left adult female; right juvenile.



Spanish Sparrow. Male. Ageing. Pattern of alula: top adult; bottom 2nd year



Spanish Sparrow. Male. Ageing. Pattern of median wing covers: top adult; bottom 1st year



Spanish Sparrow. Winter. Male. Ageing. Pattern of head: top adult; bottom 1st year





**15920 Spanish Sparrow** (*Passer hispaniolensis*)

**MOULT**

Complete **postbreeding** and **postjuvenile** moult, usually finished early November.

**PHENOLOGY**

I	II	III	IV	V	VI	VII	VIII	IX	X	XI	XII

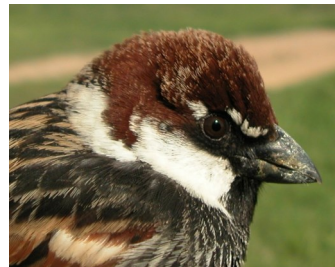
- Summer visitor      ■ Resident
- Wintering            ■ On passage



Spanish Sparrow. Spring. Juvenile. Male/female (28-VI).



Spanish Sparrow. Spring. Female (01-V).



Spanish Sparrow. Spring. Adult. Head pattern: top male (14-IV); bottom female (01-V)



Spanish Sparrow. Spring. Juvenile. Head pattern: top male (28-VI); bottom male/female (28-VI).

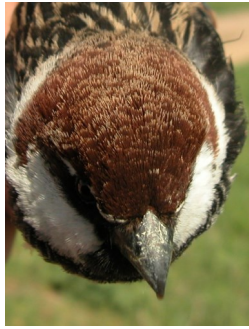


Spanish Sparrow. Spring. Juvenile. Male (28-VI).





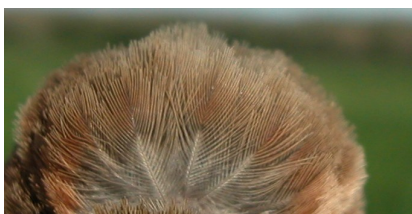
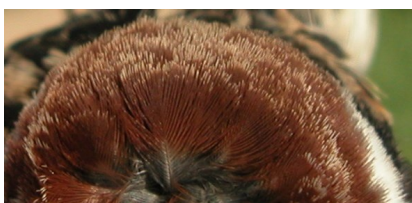
**15920 Spanish Sparrow** (*Passer hispaniolensis*)



Spanish Sparrow. Spring. Adult. Crown pattern: left male (14-IV); right female (01-V)



Spanish Sparrow. Spring. Juvenile. Crown pattern: left male (28-VI); right male/female (28-VI).



Spanish Sparrow. Spring. Adult. Pattern of crown feathers: top male (14-IV); bottom female (01-V)



Spanish Sparrow. Spring. Juvenile. Pattern of crown feathers: top male (28-VI); bottom male/female (28-VI).



Spanish Sparrow. Spring. Adult. Pattern of bib: left male (14-IV); right female (01-V)



Spanish Sparrow. Spring. Juvenile. Pattern of bib: left male (28-VI); right male/female (28-VI).



**15920 Spanish Sparrow** (*Passer hispaniolensis*)



Spanish Sparrow. Spring. Adult. Breast pattern: left male (14-IV); right female (01-V)



Spanish Sparrow. Spring. Juvenile. Breast pattern: left male (28-VI); right male/female (28-VI).



Spanish Sparrow. Spring. Adult. Pattern of flank feathers: top male (14-IV); bottom female (01-V)



Spanish Sparrow. Spring. Juvenile. Pattern of flank feathers: top male (28-VI); bottom male/female (28-VI).



Spanish Sparrow. Spring. Adult. Pattern and wear of tail: left male (14-IV); right female (01-V)

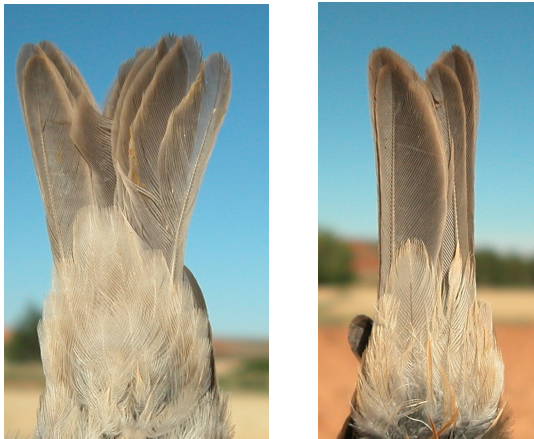


Spanish Sparrow. Spring. Juvenile. Pattern and wear of tail: left male (28-VI); right male/female (28-VI).

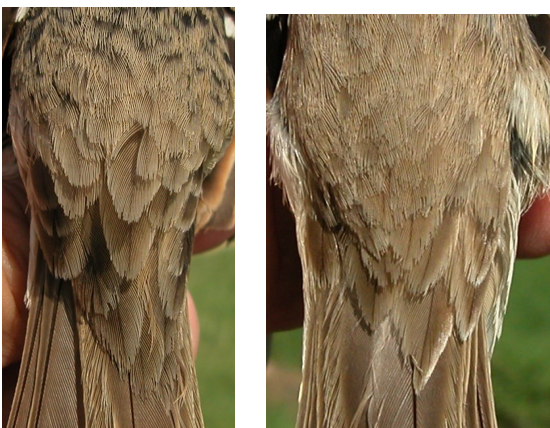




Spanish Sparrow. Spring. Adult. Pattern of undertail coverts: left male (14-IV); right female (01-V)



Spanish Sparrow. Spring. Juvenile. Pattern of undertail coverts: left male (28-VI); right male/female (28-VI).



Spanish Sparrow. Spring. Adult. Pattern of uppertail coverts: left male (14-IV); right female (01-V)



Spanish Sparrow. Spring. Juvenile. Pattern of upperparts: left male (28-VI); right male/female (28-VI).



Spanish Sparrow. Spring. Adult. Pattern of upperparts: left male (14-IV); right female (01-V)

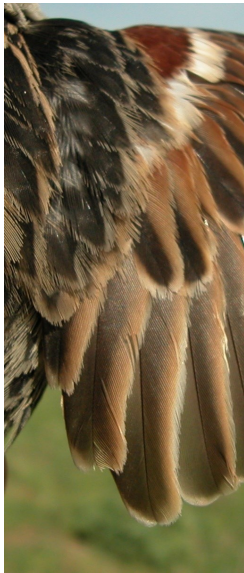




Spanish Sparrow. Spring. Juvenile. Pattern of upperparts: left male (28-VI); right male/female (28-VI).



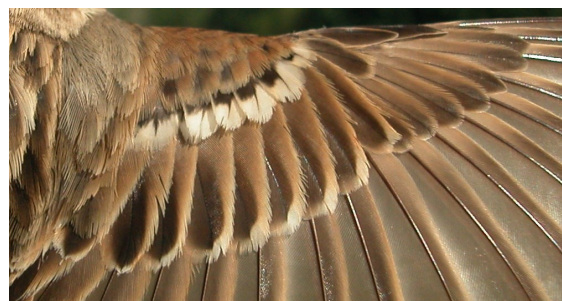
Spanish Sparrow. Spring. Juvenile. Pattern of tertials: left male (28-VI); right male/female (28-VI).



Spanish Sparrow. Spring. Adult. Pattern of tertials: left male (14-IV); right female (01-V)



Spanish Sparrow. Spring. Adult. Male: pattern of wing coverts (14-IV).



Spanish Sparrow. Spring. Adult. Female: pattern of wing coverts (01-V).





Spanish Sparrow. Spring. Juvenile. Male: pattern of wing coverts (28-VI).



Spanish Sparrow. Spring. Juvenile. Male: pattern of wing (28-VI).



Spanish Sparrow. Spring. Juvenile. Male/female: pattern of wing coverts (28-VI).



Spanish Sparrow. Spring. Juvenile. Male/female: pattern of wing (28-VI).



Spanish Sparrow. Spring. Adult. Male: pattern of wing (14-IV).



Spanish Sparrow. Winter. 1st year. Male (05-XI).



Spanish Sparrow. Spring. Adult. Female: pattern of wing (01-V).



**15920 Spanish Sparrow** (*Passer hispaniolensis*)



Spanish Sparrow. Winter. Female (04-III).



Spanish Sparrow. Winter. Pattern of crown feathers: top 1st year male (05-XI); bottom female (04-III).



Spanish Sparrow. Winter. Head pattern: top 1st year male (05-XI); bottom female (04-III).



Spanish Sparrow. Winter. Bib pattern: left 1st year male (05-XI); right female (04-III).



Spanish Sparrow. Winter. Crown pattern: left 1st year male (05-XI); right female (04-III).



Spanish Sparrow. Winter. Breast pattern: left 1st year male (05-XI); right female (04-III).



**15920 Spanish Sparrow** (*Passer hispaniolensis*)



Spanish Sparrow. Winter. Pattern of flank: top 1st year male (05-XI); bottom female (04-III).



Spanish Sparrow. Winter. Pattern of uppertail coverts: left 1st year male (05-XI); right female (04-III).



Spanish Sparrow. Winter. Pattern and wear of tail: left 1st year male (05-XI); right female (04-III).



Spanish Sparrow. Winter. Pattern of upperparts: left 1st year male (05-XI); right female (04-III).



Spanish Sparrow. Winter. Pattern of undertail coverts: left 1st year male (05-XI); right female (04-III).





Spanish Sparrow. Winter. Pattern of tertials: left 1st year male (05-XI); right female (04-III).



Spanish Sparrow. Winter. 1st year. Male: pattern of wing (05-XI).



Spanish Sparrow. Winter. 1st year. Male: pattern of wing coverts (05-XI).



Spanish Sparrow. Winter. Female: pattern of wing coverts (04-III).

Sp  
an