

415 Northern Raven

Put your logo here



Raven. Adult. 5 de mayo.

NORTHERN RAVEN (*Corvus corax*)**IDENTIFICATION**

54-67 cm. Black plumage; wedge-shaped tail; black bill and legs.



Raven. Pattern of bill and tail.

**SIMILAR SPECIES**

This species recalls that of **Carion Crow**, which has a smaller size (43-47 cm) and tail with rounded edge.



Carrion Crow

SEXING

Plumage of both sexes alike.

AGEING

3 age groups can be recognized:

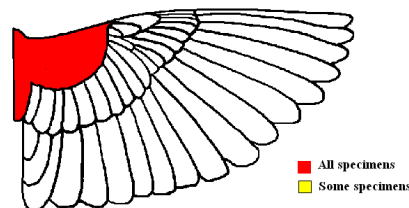
Juvenile with fresh plumage; black colour without bright; inside of upper mandible pinkish.

1st year autumn/2nd year spring with dull blackish-brown **juvenile** wing and tail feathers contrasting with moulted glossy black feathers; worn flight and tail feathers; inside of upper mandible with pinkish areas.

Adult with fresh and glossy black plumage on wing and tail, without moult limits; inside of upper mandible totally dark.

MOULT

Complete **postbreeding** moult, usually finished in November. Partial **postjuvenile** moult, mostly confined to body feathers and lesser and median wing coverts; occasionally some birds extend their moult to inner greater coverts and/or tertials; usually finished in October.



Raven. Extent of postjuvenile moult.

PHENOLOGY

I	II	III	IV	V	VI	VII	VIII	IX	X	XI	XII

STATUS IN ARAGÓN

Resident. Widely distributed throughout the Region, absent only in small areas in Caspe, La Litera and southwestern Teruel.



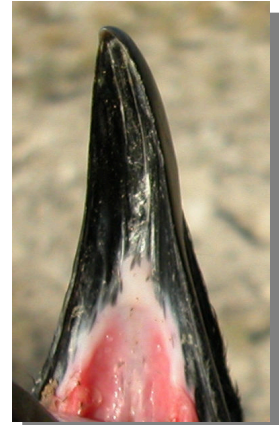
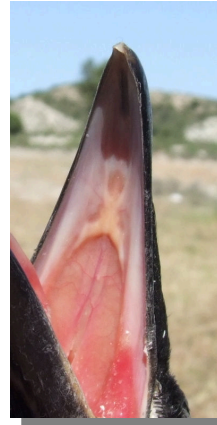
Raven. 2nd year (26-III)

415 Northern Raven

Put your logo here



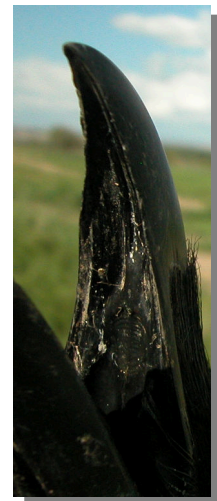
Raven. Juvenile (28-VII)



Raven. Inside of upper mandible: left young (29-V); right juvenile (28-VII).



Raven.
Iris colour: top
adult (05-
V); bot-
tom 2nd
year (26-
III).



Raven. Inside of upper mandible: left 2nd year (26-III); right adult (05-V).



Raven.
Iris colour: top
juvenile
(28-VII);
bottom
young (29-
V).



Raven. Breast pattern: top left adult (05-V); top right 2nd year (26-III); left juvenile (28-VII).

415 Northern Raven

Put your logo here



Raven. Tail wear:
top left adult (05-V); top right 2nd
year (26-III); left
juvenile (28-VII).



Raven. Upperpart
pattern: top left
adult (05-V); top
right 2nd year (26-III); left juvenile
(28-VII).



Raven. Adult: pattern of alula (05-V).

415 Northern Raven

Put your logo here



Raven. 2nd year: pattern of alula (26-III).



Raven. Juvenile: pattern of wing (28-VII).



Raven. Juvenile: pattern of alula (28-VII).



Raven. Adult: pattern of wing (05-V).



Raven. 2nd year: pattern of wing (26-III).