

# 411 Red-billed Chough

Put your logo here



Red-billed Chough. Adult (06-I).

**RED-BILLED CHOUGH** (*Pyrrhocorax pyrrhocorax*)

## IDENTIFICATION

36-42 cm. Glossy black plumage; pointed and decurved bill; red bill and legs.



Red-billed Chough. Colour of bill and legs.

## SIMILAR SPECIES

Similar to **Alpine Chough**, which has yellow bill.



Alpine Chough

## SEXING

Both sexes alike in plumage. Size can be helpful with extreme birds: **male** with tarsus about 55,7 mm and wing longer than 288 mm. **Female** is smaller with tarsus about 51,5 mm and wing shorter than 268 mm. Usually **males** have a longer bill (more than 65 mm) than **females** (less than 50 mm) but many birds cannot be confidently sexed due to size overlap.



Red-billed Chough. Sexing. Adult.



Length of bill: top male; bottom female.

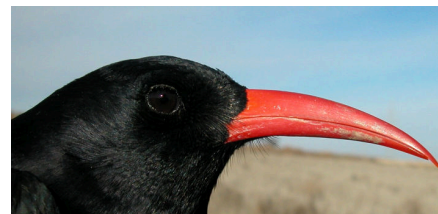
## AGEING

3 age groups can be recognized:

**Juvenile** with fresh plumage; dull orange legs; dull orange or yellow bill; dark iris.

**1st year autumn/2nd year spring** with dull blackish-brown **juvenile** wing and tail feathers contrasting with moulted glossy black lesser coverts and body feathers; worn flight and tail feathers.

**Adult** with fresh and glossy black plumage on wing and tail, without moult limits; red bill and legs; reddish iris.



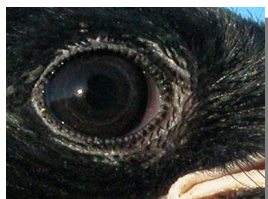
Red-billed Chough. Ageing. Colour of bill:



top adult; bottom juvenile.

# 411 Red-billed Chough

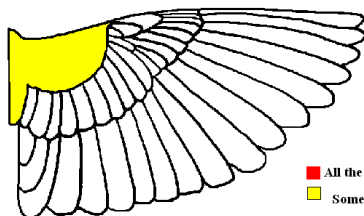
Put your logo here



Red-billed Chough. Ageing. Colour of iris: left adult; right juvenile.

## MOULT

Complete **postbreeding** moult, usually finished in October. Partial **postjuvenile** moult confined to body feathers, lesser coverts and some median wing coverts; usually finished in October.



■ All the specimens  
■ Some specimens

Red-billed Chough. Extent of postjuvenile moult.

## PHENOLOGY

I	II	III	IV	V	VI	VII	VIII	IX	X	XI	XII

## STATUS IN ARAGÓN

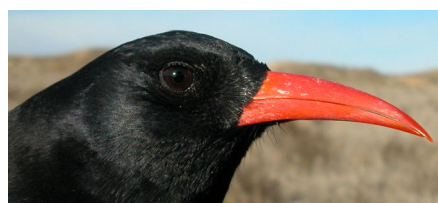
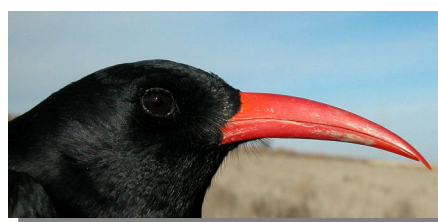
Resident. Distributed throughout the Region breeding on cliffs and buildings.



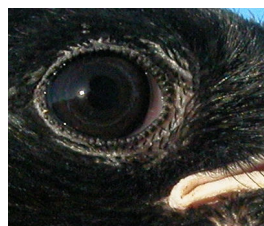
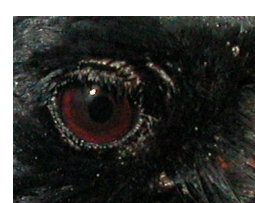
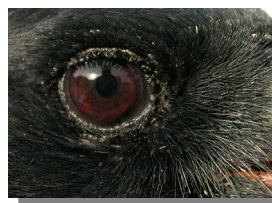
Red-billed Chough. 2nd year (06-I).



Red-billed Chough. Juvenile (18-VI).



Red-billed Chough. Length and colour of bill: top adult male (06-I); middle adult female (06-I); bottom juvenile (18-VI)



Red-billed Chough. Iris colour: top left adult (28-V); top right 2nd year (18-II); left juvenile (22-V).



# 411 Red-billed Chough

Put your logo here



Red-billed Chough.  
Breast pattern: top  
left adult (06-I); top  
right 2nd year (06-  
I); left juvenile (18-  
VI).



Red-billed Chough.  
Tail wear: top left  
adult (18-II); top  
right 2nd year (06-I);  
left juvenile (18-VI).



Red-billed Chough.  
Upperpart pattern:  
top left adult (06-I);  
top right 2nd year  
(06-I); left juvenile  
(18-VI).



Red-billed Chough. Legs colour: left adult (06-I);  
right juvenile (18-VI).



Red-billed Chough. Adult: pattern of alula (18-II).

## 411 Red-billed Chough

[Put your logo here](#)



Red-billed Chough. 2nd year: pattern of alula (18-II).



Red-billed Chough. 2nd year: pattern of wing (18-II).



Red-billed Chough. Juvenile: pattern of alula (18-VI).



Red-billed Chough. Juvenile: pattern of wing (18-VI).



Red-billed Chough. Adult: pattern of wing (18-II).