

408 Magpie

Put your logo here



Magpie. Adult (01-V).

MAGPIE (*Pica pica*)**IDENTIFICATION**

40-51 cm (of which tail 16-20). Black and white plumage, with green glossed tail and wing; very long tail.

SIMILAR SPECIES

This species is unmistakable.

SEXING

Plumage of both sexes alike. Size in **adult** birds can be helpful with extreme specimens: **male** with wing longer than 198 mm; **female** with wing shorter than 178 mm. **CAUTION:** many birds cannot be sexed due to size overlap.

AGEING

3 age groups can be recognized:

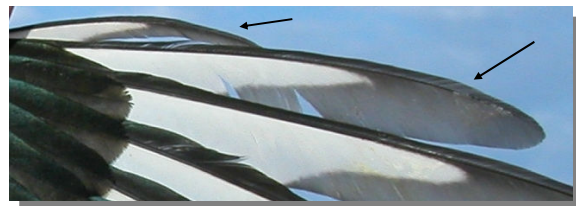
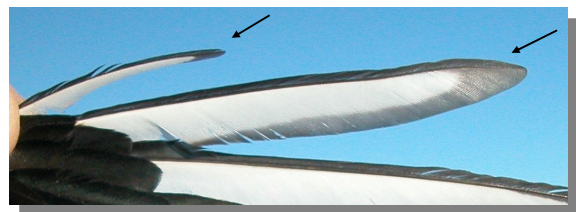
Juvenile with fresh plumage; large dark patch on 9th-10th primaries (longer than 10 and 16 mm each); iris blue grey; with bluish-grey bare skin around the eyes.

1st year autumn/2nd year spring with moult limit between moulted glossy wing feathers and duller **juvenile** retained alula, primary coverts and flight feathers; worn and dull unmoulted tail; 9th-10th primaries like **juveniles**.

Adult with glossy black and green plumage on wing and tail, without moult limits; small dark patch on 9th-10th primaries (shorter than 13 and 15 mm each), iris dark; no bare skin around the eye.



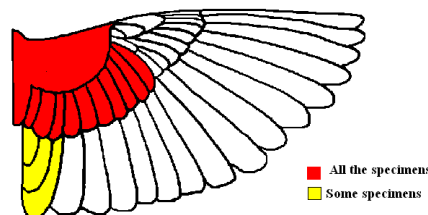
Magpie.
Ageing.
Pattern of
iris and
bare skin
around the
eye: top
adult; bot-
tom juvenile.



Magpie. Ageing. Pattern of the dark patch on primaries 9th and 10th: top adult; bottom juvenile.

MOULT

Complete **postbreeding** moult, usually finished in October. Partial **postjuvenile** moult involving body feathers, lesser, median and some inner greater coverts (sometimes all); some specimens extend their moult to some tertials and central tail feather; usually finished in October.



Magpie.
Extent of
postjuvenile
moult.

408 Magpie

Put your logo here

PHENOLOGY

I	II	III	IV	V	VI	VII	VIII	IX	X	XI	XII

STATUS IN ARAGÓN

Resident. Widely distributed throughout the Region, absent from the highest zones of the mountainous areas and the most deforested areas of the Ebro Basin.



Magpie. 2nd year (07-I)



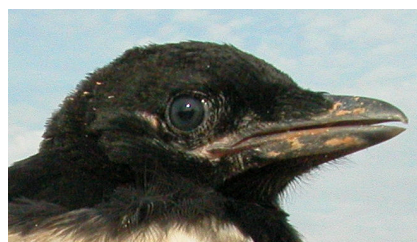
Magpie. Juvenile (13-VII)



Magpie. Young (11-VI)



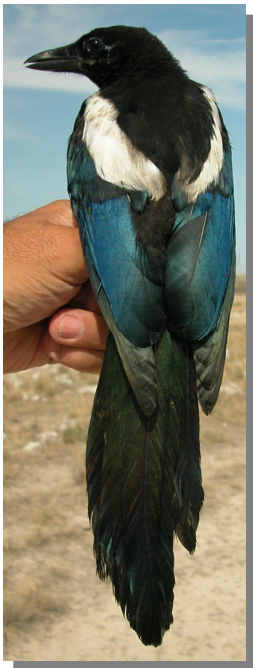
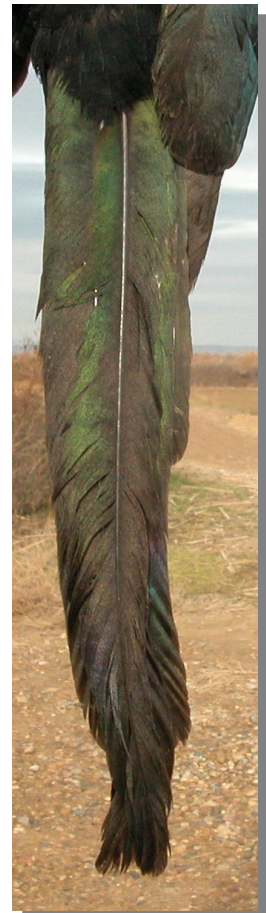
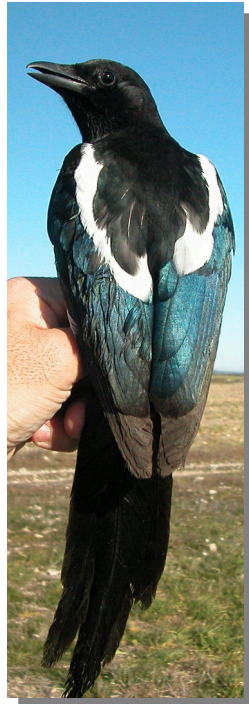
Magpie.
Iris colour:
from top to
bottom:
adult (01-
I); 2nd year
(07-I); ju-
venile (08-
VII); young
(11-VI).



Magpie. Breast pattern: left adult (01-I); right juvenile (29-VII)

408 Magpie

Put your logo here



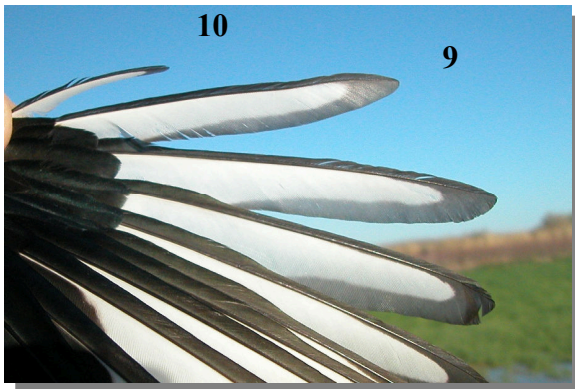
Magpie. Upperparts pattern: top left adult (01-I); top right 2nd year (07-I); left juvenile (08-VII)



Magpie. Tail pattern: top left adult (01-I); top right 2nd year (07-I); left juvenile (08-VII)

408 Magpie

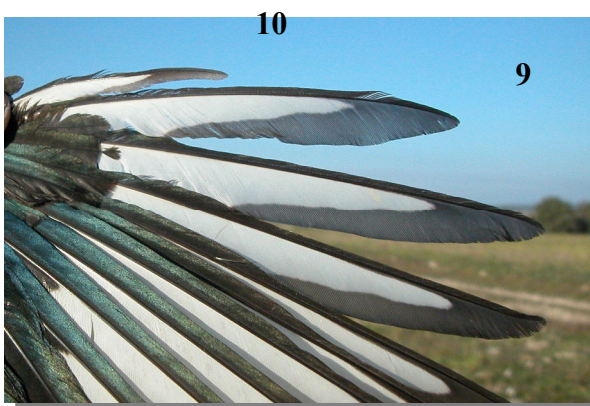
[Put your logo here](#)



Magpie. Adult: extent of dark patch on tip of 9th and 10th primaries (08-III).



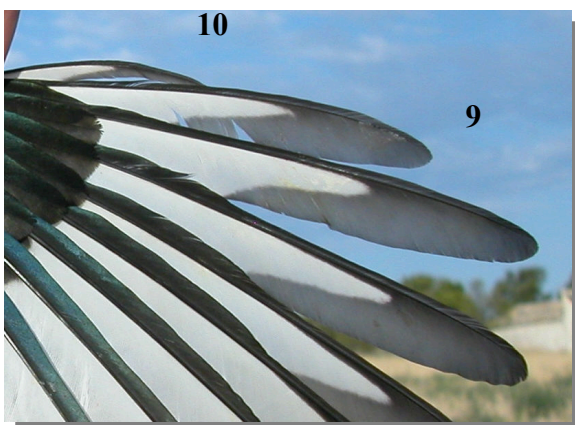
Magpie. Adult: pattern of alula (08-III).



Magpie. 2nd year: extent of dark patch on tip of 9th and 10th primaries (07-I).



Magpie. 2nd year: pattern of alula (07-I).



Magpie. Juvenile: extent of dark patch on tip of 9th and 10th primaries (08-VII).



Magpie. Juvenile: pattern of alula (08-VII).



Magpie. Adult: pattern of wing (08-III).

408 Magpie

Put your logo here



Magpie. 2nd year: pattern of wing (07-I).



Magpie. Juvenile: pattern of wing (08-VII).