



Pied Flycatcher. Spring. Adult. Male (02-V).

EUROPEAN PIED FLYCATCHER (*Ficedula hypoleuca*)

IDENTIFICATION

12-13 cm. **Male** in **breeding** plumage with black upperparts and white underparts; white forehead; grey rump; black wings with a large white patch; black tail with white patches on the outermost feathers. **Female**, brown morph breeding **male**, non breeding **male** and **juveniles** with brownish upperparts; brown wings and tail, with small white patches; underparts pale with greyish tinge.



Pied Flycatcher. Spring. Male: pattern of tail and upperparts.



Pied Flycatcher. Spring. Female: pattern of tail and upperparts.

SIMILAR SPECIES

Male is unmistakable in **breeding** plumage. **Female**, brown morph breeding **male**, non breeding **male** and **juveniles** unmistakable by pattern of their white patches on wing and tail.

SEXING

Male in **spring** with two morphs: **black morph**, which is unmistakable with pure black crown and back, and **brown morph**, very similar to **females**, but recognizable by white patch on forehead and black uppertail coverts; inner greater coverts blackish different than greyer outers; outermost tail feather with white patch with well defined edges. **Female** with upperparts and tail brownish; forehead without a white patch (**CAUTION**: some **iberiae females** may have a large white patch); brown-grey uppertail coverts; outermost tail feather with white patch with diffuse edges; inner tertials with smaller white patch than **male**. In **autumn**, after **postbreeding** moult, **adult male** with central tail feathers and uppertail coverts black. **Adult female** with central tail feathers and uppertail coverts brownish; without moult limit between inner and outer greater coverts. **Juveniles** cannot be sexed, but after **postjuvenile** moult, sexing of **1st year** birds is possible only in some extreme birds: **male** with black central tail feathers and uppertail coverts; **female** with brownish central tail feathers and uppertail coverts. **CAUTION**: most of the birds are intermediate and cannot be sexed.

13490 European Pied Flycatcher (*Ficedula hypoleuca*) 



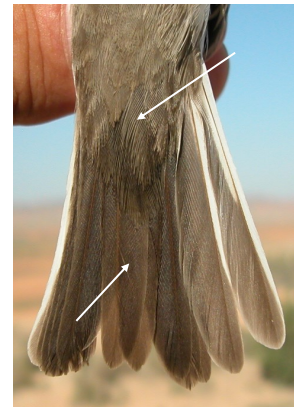
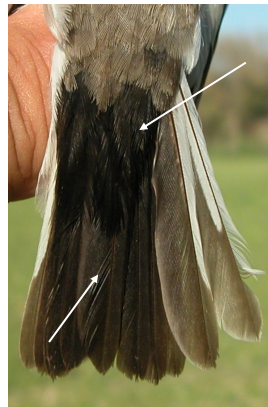
Pied Flycatcher ssp. *iberiae*. Spring. Pattern of head: top male; bottom female.



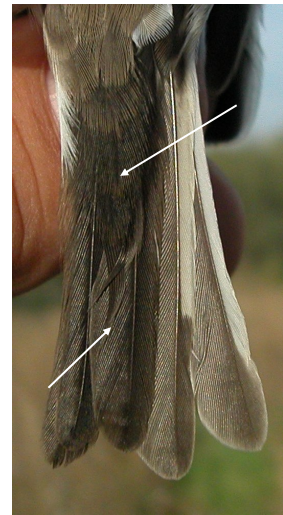
Pied Flycatcher. Spring. Pattern of head: top male; bottom female.



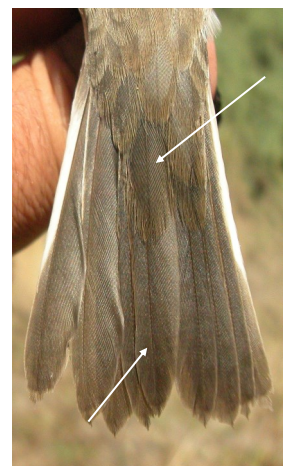
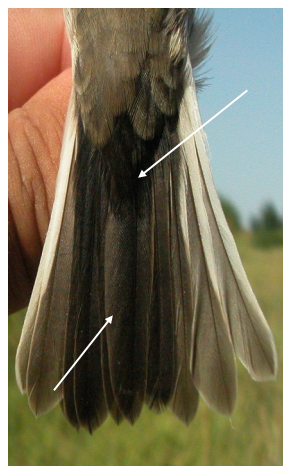
Pied Flycatcher. Spring. Pattern of forehead: left male; right female.



Pied Flycatcher. Spring. Pattern of rump and tail: left male; right female.



Pied Flycatcher. Adult. Autumn. Pattern of rump and tail: left male; right female.



Pied Flycatcher. 1st year. Autumn. Pattern of rump and tail: left male; right female.

AGEING

4 age groups can be recognized:

Juvenile with body feathers spotted pale buff; inside of upper mandible pale grey-pink; greater coverts with a white triangular patch on tips; central tertial with a broad white edge on outer web and narrow on inner.

1st year autumn with unmoulted wing feathers with similar pattern as **juveniles**.

2nd year spring difficult to determine, mainly in **females**; tail feathers with pointed and worn tips; primary coverts browner, pointed and worn than **adults**; sometimes some retained **juvenile** greater coverts with triangular patch on tip.

Adult in spring with greater coverts with narrow arc-shaped whitish-buff patch on tips; primary coverts with rounded tips; tail feathers rounded. In **autumn** with dark-grey colour inside of upper mandible; central tertial with similar white edges on both sides of the feather.



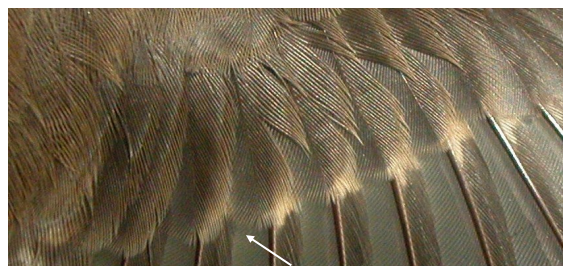
Pied Flycatcher. Pattern of upperparts: left adult female; right juvenile.



Pied Flycatcher. Autumn. Pattern of tertials: left adult; right 1st year.



Pied Flycatcher. Pattern of head: top adult female; bottom juvenile.



Pied Flycatcher. Autumn. Pattern of tips of primary coverts: top adult; bottom 1st year.



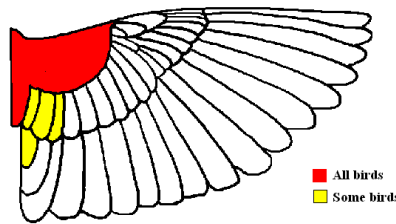
Pied Flycatcher. Spring. Moulting limit on greater coverts: top adult; bottom 2nd year.



Pied Flycatcher. Spring. Pattern of tips of primary coverts: top adult; bottom 2nd year.

MOULT

Complete **postbreeding** moult, usually finished before the autumnal migration; some birds retain secondaries to finish their moult in wintering quarters. Partial **postjuvenile** moult involving (no all birds) body feathers, lesser, median and some inner greater coverts; inner tertials are rarely moulted; usually finished in September. Both age classes have an extensive **prebreeding** moult, between December-March, including most of the greater coverts and tertials, with some birds moulting all greater coverts and some secondaries and tail feathers; **males** acquire breeding plumage.



Pied Flycatcher. Extent of postjuvenile moult.

PHENOLOGY

I	II	III	IV	V	VI	VII	VIII	IX	X	XI	XII

- Summer visitor
- Resident
- Wintering
- On passage



Pied Flycatcher. Spring. Adult. Male ssp. *iberiae* (02-VII).



Pied Flycatcher. Spring. Adult. Female (01-V).



Pied Flycatcher. Spring. 2nd year. Female (01-V).



Pied Flycatcher. Spring. Adult. Female ssp *iberiae* ssp *iberiae* (02-VII).



Pied Flycatcher. Spring. Juvenile ssp *iberiae* (02-VII)



Pied Flycatcher. Spring. 2nd year. Male (03-V).



Pied Flycatcher. Spring. Adult. Head pattern: top male (02-V); bottom female (01-V).



13490 European Pied Flycatcher (*Ficedula hypoleuca*) 



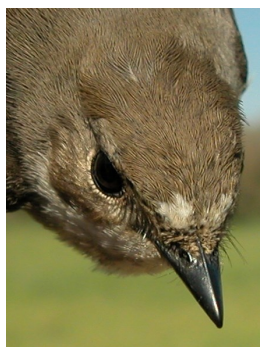
Pied Flycatcher. Spring. Adult ssp. *iberiae*. Head pattern: top male (02-VII); bottom female (02-VII).



Pied Flycatcher. Spring. Adult. Forehead pattern: left male (02-V); right female (01-V).



Pied Flycatcher. Spring. Adult ssp. *iberiae*. Forehead pattern: left male (02-VII); right female (02-VII).



Pied Flycatcher. Spring. Forehead pattern: top left 2nd year male (02-V); top right 2nd year female (01-V); left juvenile ssp. *iberiae* (02-VII).

Pied Flycatcher. Spring. Head pattern: top 2nd year male (02-V); middle 2nd year female (01-V); bottom juvenile ssp. *iberiae* (02-VII).

13490 European Pied Flycatcher (*Ficedula hypoleuca*) 



Pied Flycatcher. Spring. Adult. Breast pattern: left male (02-V); right female (01-V).



Pied Flycatcher. Spring. Adult. Tail pattern: left male (02-V); right female (01-V).



Pied Flycatcher. Spring. Adult ssp. *iberiae*. Breast pattern: left male (02-VII); right female (02-VII).



Pied Flycatcher. Spring. Adult ssp. *iberiae*. Tail pattern: left male (02-VII); right female (02-VII).



Pied Flycatcher. Spring. Breast pattern: top left 2nd year male (02-V); top right 2nd year female (01-V); left juvenile ssp. *iberiae* (02-VII).



Pied Flycatcher. Spring. 2nd year. Tail pattern: left male (02-V); right female (01-V);

13490 European Pied Flycatcher (*Ficedula hypoleuca*) 



Pied Flycatcher. Spring. Adult. Upperparts pattern: left male (02-V); right female (01-V).



Pied Flycatcher. Spring. Upperparts pattern: top left 2nd year male (02-V); top right 2nd year female (01-V); left juvenile spp. *iberiae* (02-VII).

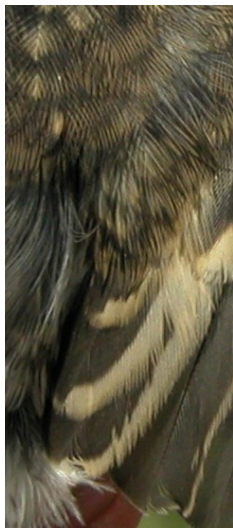


Pied Flycatcher. Spring. Adult ssp. *iberiae*. Upperparts pattern: left male (02-VII); right female (02-VII).



Pied Flycatcher. Spring. Adult. Pattern of tertials: left male (02-V); right female (01-V).

13490 European Pied Flycatcher (*Ficedula hypoleuca*)  **aranzadi**
zientzia elkarte



Pied Flycatcher. Spring. Pattern of tertials: top left 2nd year male (02-V); top right 2nd year female (01-V); left juvenile spp. *iberiae* (02-VII).



Pied Flycatcher. Spring. Adult. Pattern of upperwingcoverts: top male (02-V); bottom female (01-V).



Pied Flycatcher. Spring. Pattern of upperwing coverts: top 2nd year male (02-V); middle 2nd year female (01-V); bottom juvenile spp. *iberiae* (02-VII).



Pied Flycatcher. Spring. Adult. Male: pattern of wing (02-V).



Pied Flycatcher. Spring. Adult. Male spp. *iberiae*: pattern of wing (02-VII).

13490 European Pied Flycatcher (*Ficedula hypoleuca*) 



Pied Flycatcher. Spring. Adult. Female: pattern of wing (01-V).



Pied Flycatcher. Spring. 2nd year. Male: pattern of wing (02-V).



Pied Flycatcher. Spring. 2nd year. Male ssp *iberiae*: pattern of wing (02-VII).



Pied Flycatcher. Spring. 2nd year. Female: pattern of wing (01-V).



Pied Flycatcher. Spring. Juvenile ssp *iberiae*: pattern of wing (02-VII).



Pied Flycatcher. Autumn. Adult. Male (22-VIII).

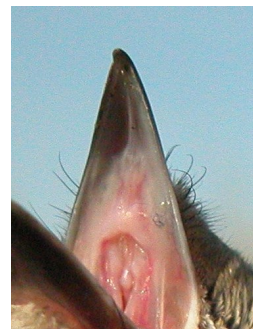
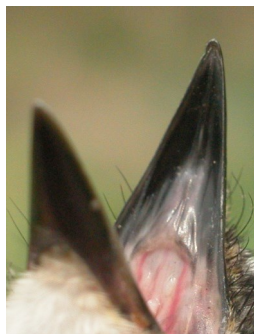


Pied Flycatcher. Autumn. Adult. Female (29-IX).

13490 European Pied Flycatcher (*Ficedula hypoleuca*) 



Pied Flycatcher. Autumn. 1st year (15-VIII).



Pied Flycatcher. Autumn. Colour inside of upper mandible: left adult (23-IV); right 1st year (15-VIII).



Pied Flycatcher. Autumn. Head pattern: top adult male (22-VIII); middle adult female (29-IX); bottom 1st year (15-VIII)



Pied Flycatcher. Autumn. Upperparts pattern: top left adult male (09-IX); top right adult female (29-IX); left 1st year (23-VIII)



Pied Flycatcher. Autumn. Breast pattern: top left adult male (09-IX); top right adult female (29-IX); left 1st year (23-VIII)

13490 European Pied Flycatcher (*Ficedula hypoleuca*) 



Pied Flycatcher. Autumn. Adult. Tail pattern: left male (20-VIII); right female (29-IX)



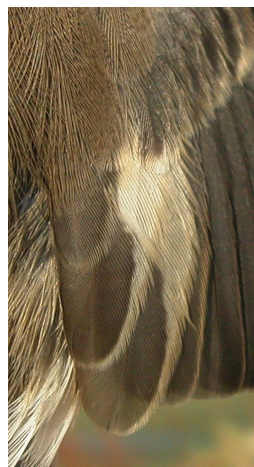
Pied Flycatcher. Autumn. 1st year. Tail pattern: top left male (15-VIII); top right female (22-VIII); left indeterminate (11-IX).



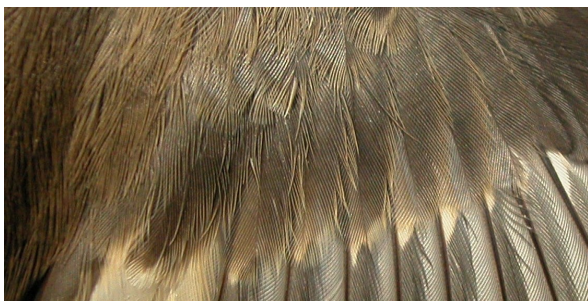
Pied Flycatcher. Autumn. Adult. Female: pattern of greater coverts (29-IX)



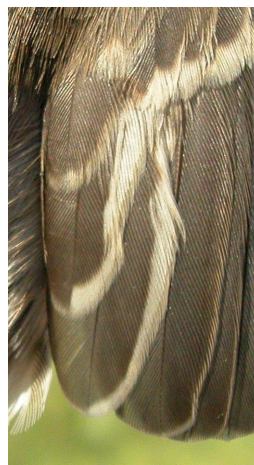
Pied Flycatcher. Autumn. 1st year: pattern of greater coverts (09-IX).



Pied Flycatcher. Autumn. Pattern of central tertial: top left adult male (09-IX); top right adult female (29-IX); left 1st year (23-VIII)



Pied Flycatcher. Autumn. Adult. Male: pattern of greater coverts (09-IX)





Pied Flycatcher. Autumn. Adult. Male: pattern of wing (09-IX)



Pied Flycatcher. Autumn. Adult. Female: pattern of wing (24-VIII)



Pied Flycatcher. Autumn. Juvenile: pattern of wing (15-VIII)