

384 Spotted Flycatcher

Put your logo here

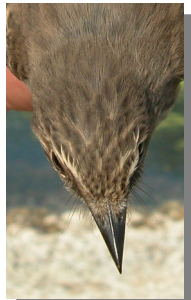


Spotted Flycatcher. Spring. Adult (07-VII).

SPOTTED FLYCATCHER (*Muscicapa striata*)

IDENTIFICATION

13-14 cm. Brown-grey upperparts; pale underparts, with diffuse streaked on neck, flanks and breast; crown streaked brown; brownish wings and tail.



Spotted Flycatcher. Pattern of breast and crown.

SIMILAR SPECIES

This species is unmistakable.

AGEING

3 age groups can be recognized:

Juvenile with fresh plumage; wing coverts and upperparts with broad pale spots.

1st year autumn with moult limit on wing between moulted greater coverts, darker and without clear pale tips, and **juvenile** retained with pale spot on tips; usually with some tipped buff-grey **juvenile** uppertail coverts retained; with fresh wing feathers.

Adult with worn wing feathers; wing coverts without pale spots on tips (greater coverts have a narrow white edge).

In **spring**, after **prebreeding** moult, ageing is not possible using plumage pattern.



Spotted Flycatcher. Spring. Ageing. Pattern of upperpart: left adult; right juvenile.



Spotted Flycatcher. Spring. Ageing. Pattern of greater coverts: top adult; bottom 1st year.

SEXING

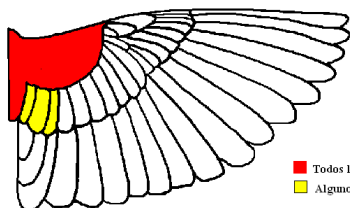
Plumage of both sexes alike.

MOULT

Partial **postbreeding** moult, involving some body feathers, wing feathers (lesser and median coverts, greater coverts, tertials and secondaries) and tail; but some birds don't moult any feather. **Postjuvenile** moult is also very variable being usually partial (but complete in some birds), including body feathers, lesser and median coverts and inner greater coverts. Both age classes have a more or less complete **prebreeding** moult in wintering quarters (part of all of feathers renewed in **postbreeding/postjuvenile** moults usually not renewed again in winter).

384 Spotted Flycatcher

Put your logo here



Spotted Flycatcher.
Extent of
postjuvenile
moult.

■ Todos los ejemplares
■ Algunos ejemplares

PHENOLOGY

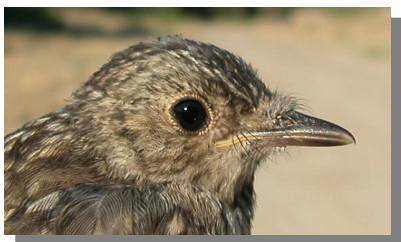
I	II	III	IV	V	VI	VII	VIII	IX	X	XI	XII

STATUS IN ARAGON

Summer visitor. Breeds scarcely in open woodlands from the Region.



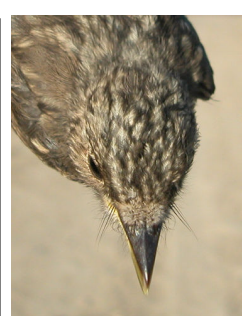
Spotted Flycatcher. Spring. Juvenile (15-VII)



Spotted Flycatcher.
Spring.
Head pattern:
top adult (07-VI);
bottom juvenile (15-VII).



Spotted Flycatcher. Spring. Breast pattern: left adult (07-VI); right juvenile (15-VII).



Spotted Flycatcher. Spring. Crown pattern: left adult (07-VI); right juvenile (15-VII).



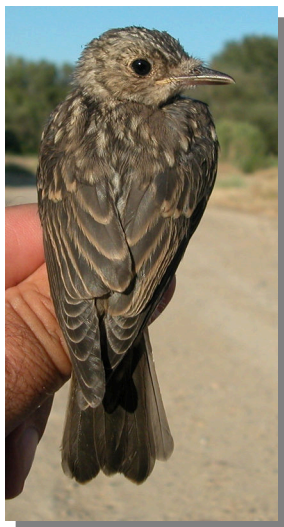
Spotted Flycatcher. Spring. Pattern of tail and upper-tail coverts: left adult (07-VI); right juvenile (15-VII).

384 Spotted Flycatcher

Put your logo here



Spotted Flycatcher. Spring. Upperpart pattern: left adult (07-VI); right juvenile (15-VII).



Spotted Flycatcher. Autumn. Adult (22-VIII).



Spotted Flycatcher. Spring. Adult: pattern of wing (06-V).



Spotted Flycatcher. Autumn. 1st year (15-VIII).



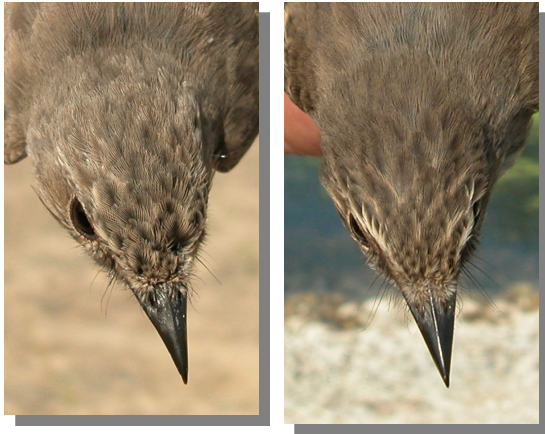
Spotted Flycatcher. Spring. Juvenile: pattern of wing (15-VII).



Spotted Flycatcher. Head pattern and iris colour: top adult (22-VIII); bottom 1st year (15-VIII).

384 Spotted Flycatcher

Put your logo here



Spotted Flycatcher. Autumn. Crown pattern: left adult (22-VIII); right 1st year (15-VIII).



Spotted Flycatcher. Autumn. Breast pattern: left adult (22-VIII); right 1st year (15-VIII).



Spotted Flycatcher. Autumn. Pattern of tail and uppertail coverts: left adult (22-VIII); right 1st year (15-VIII).



Spotted Flycatcher. Autumn. Upperpart pattern: left adult (22-VIII); right 1st year (15-VIII).



Spotted Flycatcher. Autumn. Adult: pattern of wing (17-VIII).



Spotted Flycatcher. Autumn. 1st year: pattern of wing (15-VIII).