

374b Identification Juvenile *Sylvia* Warblers

Put your logo here

IDENTIFICATION KEY: JUVENILES OF *Sylvia* AND *Curruca* WARBLERS.

1 - Outermost tail feather without a pale patch 2

Outermost tail feather with a pale patch 3

2 - Head uniform grey: Garden Warbler (*Sylvia borin*)

- Head with a reddish-brown cap: Eurasian Blackcap (*Sylvia atricapilla*)

3 - Tertials with orange edges 4

Tertials with grey or buff edges 5

4 - Wing longer than 68 mm; 10th primary shorter than primary coverts: Common Whitethroat (*Curruca communis*)

- Wing shorter than 58 mm; 10th primary longer than primary coverts: Spectacled Warbler (*Curruca conspicillata*)

5 - With grey/brown throat; tail long: Dartford Warbler (*Curruca undata*)

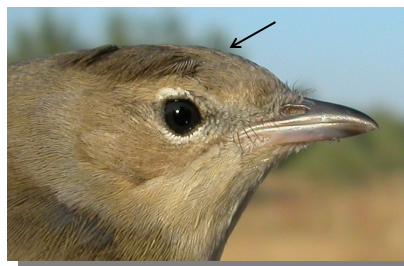
With pale throat..... 6

6 - Without red eye ring; throat pure white; wing longer than 72 mm: Western Orphee Warbler (*Curruca hortensis*)

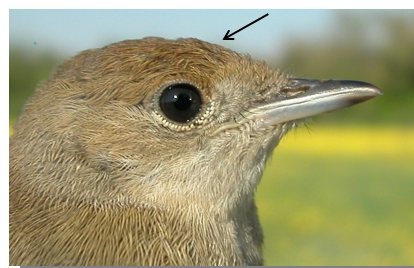
- With reddish eye ring; wing shorter than 70 mm 7

7 - With greyish upperparts; creamy throat; buffish flanks; 10th primary with the same length than primary coverts; not fluffy plumage: Subalpine Warbler (*Curruca iberiae*)

- With brownish upperparts; whitish throat; greyish flanks; 10th primary usually (but not always) longer than primary coverts; fluffy plumage: Sardinian Warbler (*Curruca melanocephala*)



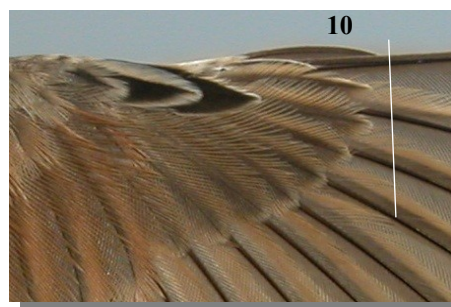
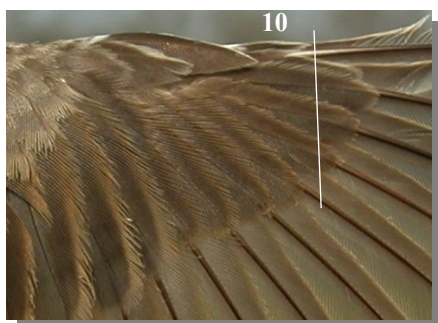
Garden Warbler: uniform grey head; outermost tail feather without a white patch.



Eurasian Blackcap: with brown cap; outermost tail feather without a white patch.

374b Identification Juvenile Sylvia Warblers

Put your logo here



Common Whitethroat: outermost tail feather with a pale patch; tertials with orange edges; 10th primary shorter than primary coverts..



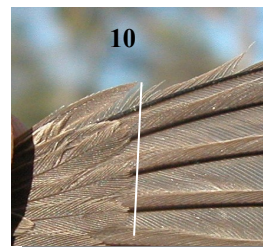
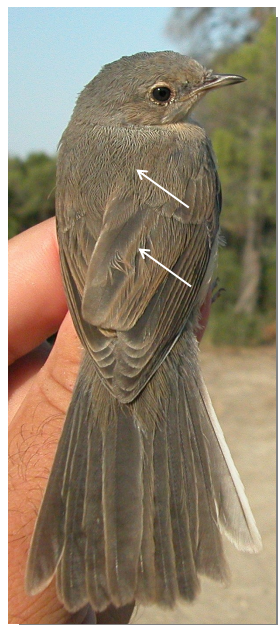
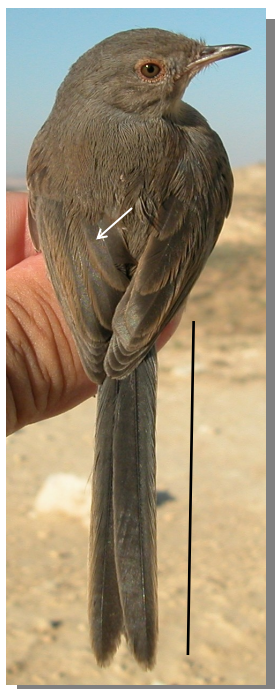
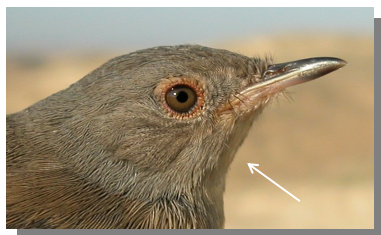
Spectacled Warbler: outermost tail feather with a pale patch; tertials with orange edges; 10th primary longer than primary coverts..



Western Orphee Warbler: outermost tail feather with a pale patch; tertials with buffish edges; pure white throat; without reddish eye ring.

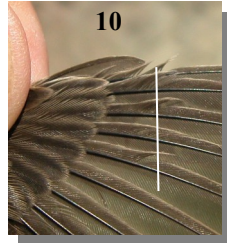
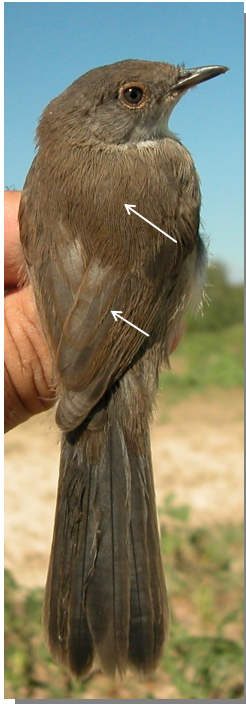
374b Identification Juvenile *Sylvia* Warblers

Put your logo here



Dartford Warbler: outermost tail feather with a pale patch; tertials with buffish edges; grey-brown throat; reddish eye ring; long tail.

Subalpine Warbler: outermost tail feather with a pale patch; tertials with buffish edges; greyish upperparts; creamy throat; buffish flanks; 10th primary with the same length than primary coverts.

374b Identification Juvenile *Sylvia* Warblers[Put your logo here](#)

Sardinian Warbler: outermost tail feather with a pale patch; tertials with buffish edges; brownish upper-parts; whitish throat; greyish flanks; 10th primary longer than primary coverts.