

IDENTIFICATION KEY: ADULTS OF *Sylvia* AND *Curruca* WARBLERS.

1 - Outermost tail feather without a white patch 2

Outermost tail feather with a white patch 3

2 - Head uniform grey: Garden Warbler (*Sylvia borin*)

- Head with a black (male) or reddish-brown (female) cap: Eurasian Blackcap (*Sylvia atricapilla*)

3 - Tertials with orange edges 4

Tertials with grey or brown edges 5

4 - Wing longer than 68 mm; 10th primary shorter than primary coverts; head of male/female with grey-brownish tinge: Common Whitethroat (*Curruca communis*)

- Wing shorter than 58 mm; 10th primary longer than primary coverts; head of male with blackish head; female with grey-brownish tinged head: Spectacled Warbler (*Curruca conspicillata*)

5 - With white throat 6

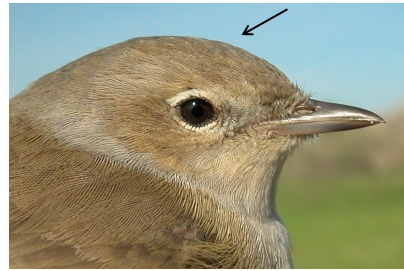
With reddish/grey throat 7

6 - Without red eye ring; male/female with dark head; wing longer than 72 mm: Western Orphean Warbler (*Curruca hortensis*)

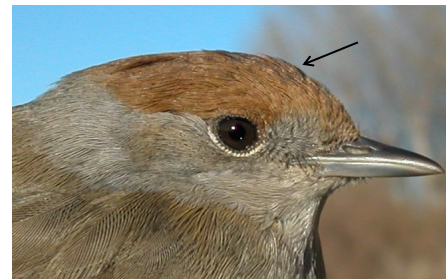
- With red eye ring; with black (male) or grey (female) head; wing shorter than 67 mm: Sardinian Warbler (*Curruca melanocephala*)

7 - With greyish upperparts; reddish throat spotted white; tail long: Dartford Warbler (*Curruca undata*)

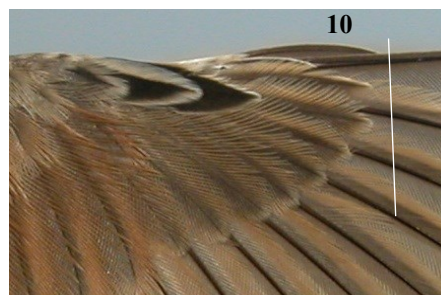
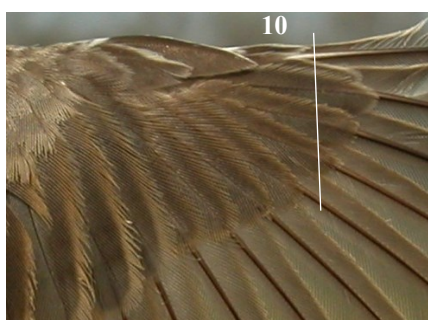
- With brownish upperparts; plain reddish throat not spotted white; tail short: Subalpine Warbler (*Curruca iberiae*)



Garden Warbler: uniform grey head; outermost tail feather without a white patch.

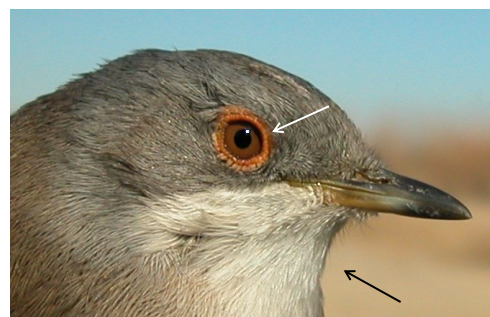


Eurasian Blackcap: with black (male) or brown (female) cap; outermost tail feather without a white patch.



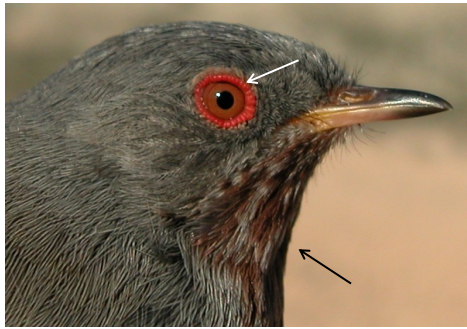
Common Whitethroat: outermost tail feather with a white patch; tertials with orange edges; 10th primary shorter than primary coverts; male (1)/female (2) with brown-grey tinged head.

Spectacled Warbler: outermost tail feather with a white patch; tertials with orange edges; 10th primary longer than primary coverts; male (1) with blackish head; female (2) with brown-grey tinged head.



Western Orphean Warbler: outermost tail feather with a white patch; tertials with buffish edges; white throat; without reddish eye ring; male/female with blackish head.

Sardinian Warbler: outermost tail feather with a white patch; tertials with buffish edges; white throat; with reddish eye ring; with black (male) or grey (female) head.



Dartford Warbler: outermost tail feather with a white patch; tertials with buffish edges; grey upperparts; reddish throat spotted white; reddish eye ring; long tail.

Subalpine Warbler: outermost tail feather with a white patch; tertials with buffish edges; brown upperparts; plain reddish throat not spotted white; reddish eye ring; short tail.