

367 Western Subalpine Warbler

Put your logo here

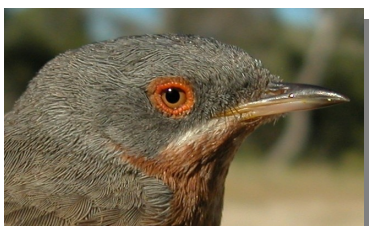


Subalpine Warbler. Spring. Adult. Male (01-VI).

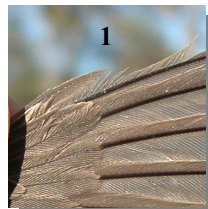
WESTERN SUBALPINE WARBLER (*Curruca iberiae*)

IDENTIFICATION

12-13 cm; wing between 57-64 mm. **Male** with grey head and upperparts; orange throat and breast; iris and eye-ring reddish. **Female** duller than **male**, with brownish upperparts; whitish underparts; white eye-ring and grey-brown iris; 10th primary with the same length than primary coverts; both sexes with a white moustache (better defined in **male**) and pale legs. **Juveniles** are similar to **female**, without grey and with buff flanks.



Subalpine Warbler.
Spring. Adult.
Pattern of
head: top male;
bottom female.



Subalpine Warbler.
Juvenile. Pattern of
tertials, upperparts and
length of 10th primary

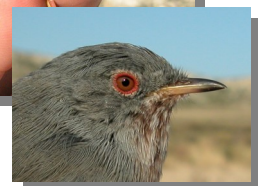


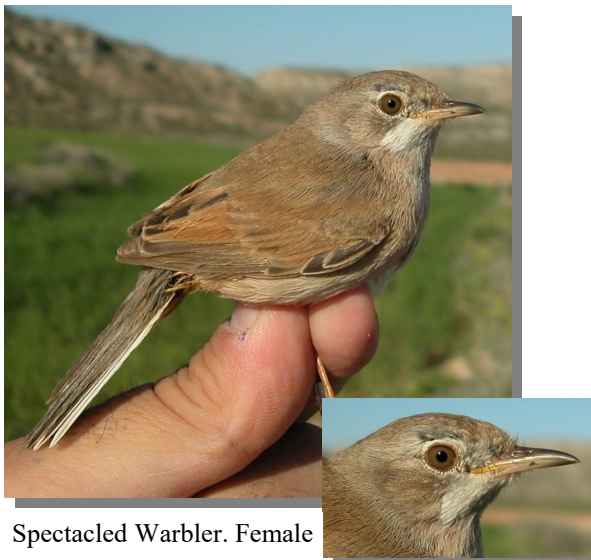
SIMILAR SPECIES

Male recalls a **Dartford Warbler** which lacks white moustache and has breast with white spots. **Female** recalls a **Spectacled Warbler** which has buff wings, lacks pale moustache and grey on head. **Juveniles** can be more difficult to determine: **Spectacled Warbler** has greater coverts, tertials and secondaries with broad buff edges; some with wing shorter than 55 mm. **Sardinian Warbler** has darker upperparts; flanks grey and no buff; fluffy plumage; 10th primary usually longer than primary coverts.



Dartford Warbler



367 Western Subalpine Warbler[Put your logo here](#)

Spectacled Warbler. Female

SEXING

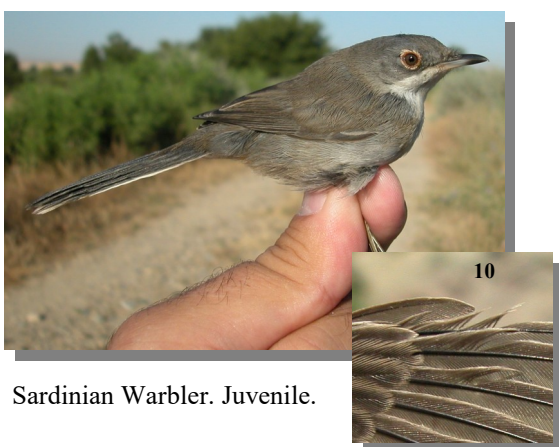
In **spring**, **male** with grey upperparts; red eye-ring; white moustache; reddish throat and breast. **Female** with duller colours; white eye-ring; pale throat and breast (**CAUTION**: some **2nd year males** are very similar to **adult females**). **Juveniles** cannot be sexed using plumage pattern. In **autumn**, after **postjuvenile** moult, a limited sexual dimorphism in **1st year** birds can be found: **male** usually grey with orange-brown tinge on underparts; **female** brown and without orange tinge on underparts (**CAUTION**: most of the birds are intermediate and sexing only **male-like** birds are recommended); **adults** as in **spring**.



Spectacled Warbler. Juvenile.



Subalpine Warbler.
Spring. Adult.
Sexing. Pattern
of head: top
male; bottom
female.



Sardinian Warbler. Juvenile.



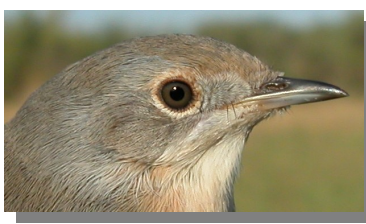
Subalpine Warbler. Spring. Adult. Sexing. Pattern of
breast: left male; right female.

367 Western Subalpine Warbler

Put your logo here



Subalpine Warbler. Autumn. Adult. Sexing. Pattern of head: top male; bottom female.



Subalpine Warbler. Autumn. 1st year. Sexing. Pattern of head: top male; bottom female.



Subalpine Warbler. Autumn. Adult. Sexing. Pattern of breast: left male; right female.



Subalpine Warbler. Autumn. 1st year. Sexing. Pattern of breast: left male; right female.

AGEING

4 age groups can be recognized:

Juvenile with fresh plumage; without moult limits; outer tail feathers with brownish edge; iris grey-olive.

1st year autumn with moult limits on wing between moulted dark grey wing coverts and tertials contrasting with retained more worn and pale brown **juvenile** flight feathers, primary coverts and sometimes outer greater coverts; in unmoulted then with outer tail feathers with brownish edge; dark iris.

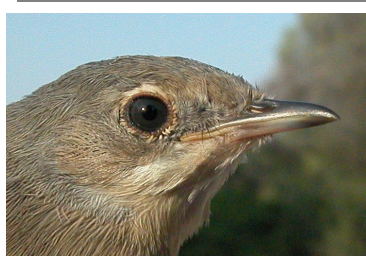
2nd year spring with moult limit on wing between moulted feathers and **juvenile** retained, usually flight feathers, primary coverts and sometimes outer greater coverts, very worn and brown; if unmoulted then the outermost tail feathers with brownish tinged edges.

Adult in **autumn** without moult limits on wing; all greater coverts with greyish edges; the outermost tail feathers with white edges (**CAUTION**: some specimens have it grey); iris reddish.

CAUTION: in **spring**, after **prebreeding** moult, both age classes have moult limits on wings; some **2nd year** birds have a complete moult being indistinguishable from **adults**.



Subalpine Warbler. Ageing. Pattern of head and iris colour: top adult female; bottom juvenile.



Subalpine Warbler. Autumn Ageing. Pattern of the outermost tail feather: left adult female; right 1st year.

367 Western Subalpine Warbler

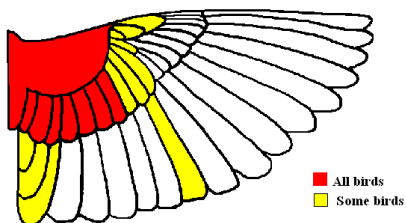
Put your logo here



Subalpine Warbler. Autumn Ageing. Moul limit on greater coverts: top adult; bottom 1st year.

MOULT

Complete **postbreeding** moult, usually finished in September. Partial **postjuvenile** moult involving body feathers, lesser and median coverts and all or most greater coverts; some birds can moult tertials and some tail feather; usually finished in September. Both age classes have a partial **prebreeding** moult (more extensive in **2nd year** birds) including all or part of tertials and tail feathers, none to all greater coverts and some inner secondaries.



Subalpine Warbler.
Extent of postjuvenile moult.

PHENOLOGY

I	II	III	IV	V	VI	VII	VIII	IX	X	XI	XII

STATUS IN ARAGON

Summer visitor. Widely distributed throughout the Region, absent from the highest mountains and deforested areas.



Subalpine Warbler. Spring. Adult. Female (11-VI).



Subalpine Warbler. Spring. 2nd year. Male (05-VII).



Subalpine Warbler. Spring. 2nd year. Female (21-V).

367 Western Subalpine Warbler

[Put your logo here](#)



Subalpine Warbler. Spring. Juvenile (13-VII).



Subalpine Warbler. Spring. Adult. Breast pattern: left male (01-VI); right female (11-VI).



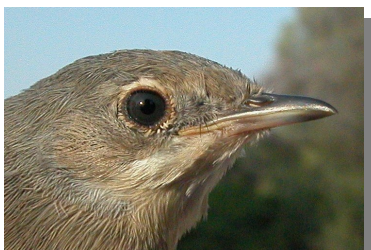
Subalpine Warbler. Spring. Adult. Pattern of head, colour of eye-ring and iris: top male (01-VI); bottom female (11-VI).



Subalpine Warbler. Spring. Breast pattern: top left 2nd year male (05-VII); top right 2nd year female (21-V); left juvenile (13-VII).



Subalpine Warbler. Spring. Pattern of head, colour of eye-ring and iris: top 2nd year male (05-VII); middle 2nd year female (21-V); bottom juvenile (13-VII).



Subalpine Warbler. Spring. Adult. Upperpart pattern: left male (01-VI); right female (11-VI).

367 Western Subalpine Warbler

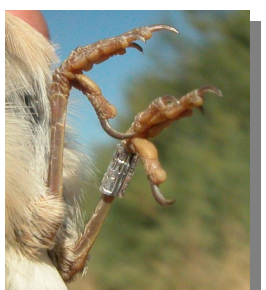
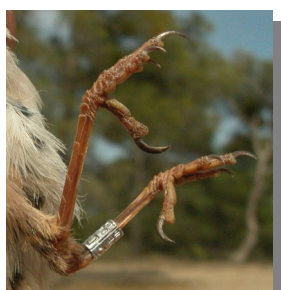
Put your logo here



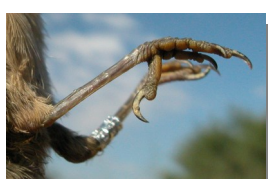
Subalpine Warbler. Spring. Adult. Tail pattern: left male (01-VI); right female (11-VI).



Subalpine Warbler. Spring. Upperpart pattern: top left 2nd year male (05-VII); top right 2nd year female (21-V); left juvenile (13-VII).



Subalpine Warbler. Spring. Tail pattern: top left 2nd year male (05-VII); top right 2nd year female (21-V); left juvenile (13-VII).



Subalpine Warbler. Colour of legs: top left adult (25-V); top right 1st year (06-VIII); left juvenile (07-VII).

367 Western Subalpine Warbler

[Put your logo here](#)



Subalpine Warbler. Spring. Adult. Male: pattern of wing (01-VI).



Subalpine Warbler. Spring. Juvenile: pattern of wing (13-VII).



Subalpine Warbler. Spring. Adult. Female: pattern of wing (11-VI).



Subalpine Warbler. Spring. 2nd year. Male: pattern of wing (05-VII).



Subalpine Warbler. Spring. 2nd year. Female: pattern of wing (21-V).



Subalpine Warbler. Autumn. Adult. Male (12-VIII).



Subalpine Warbler. Autumn. Adult. Female (09-VIII).

367 Western Subalpine Warbler

[Put your logo here](#)



Subalpine Warbler. Autumn. 1st year. Head pattern and iris colour: top male (15-VIII); bottom female (15-VIII).

Subalpine Warbler. Autumn. 1st year. Male (15-VIII).



Subalpine Warbler. Autumn. Adult. Breast pattern: left male (12-VIII); right female (09-VIII).

Subalpine Warbler. Autumn. 1st year. Female (15-VIII).



Subalpine Warbler. Autumn. 1st year. Head pattern and iris colour: top male (12-VIII); bottom female (09-VIII).



Subalpine Warbler. Autumn. 1st year. Breast pattern: left male (15-VIII); right female (15-VIII).

367 Western Subalpine Warbler

Put your logo here



Subalpine Warbler. Autumn. Adult. Upperpart pattern: left male (12-VIII); right female (09-VIII).



Subalpine Warbler. Autumn. 1st year. Upperpart pattern: left male (15-VIII); right female (15-VIII).



Subalpine Warbler. Autumn. Adult. Tail pattern: left male (12-VIII); right female (09-VIII).



Subalpine Warbler. Autumn. 1st year. Tail pattern: left male (15-VIII); right female (15-VIII).



Subalpine Warbler. Autumn. Adult. Female: pattern of wing (12-VIII).

367 Western Subalpine Warbler

[Put your logo here](#)



Subalpine Warbler. Autumn. Adult. Female: pattern of wing (09-VIII).



Subalpine Warbler. Autumn. 1st year. Male: pattern of wing (15-VIII).



Subalpine Warbler. Autumn. 1st year. Female: pattern of wing (15-VIII).