

356 Sedge Warbler

Put your logo here



Sedge Warbler. Spring (24-III).

SEDGE WARBLER (*Acrocephalus schoenobaenus*)

IDENTIFICATION

11-13 cm. Brown reddish upperparts, streaked dark; yellow-white underparts; rufous rump; distinct pale supercilium; crown streaked dark.



Sedge Warbler. Pattern of head and crown.

SIMILAR SPECIES

Recalls a **Reed Warbler**, without pale supercilium. Similar to **Aquatic Warbler** with a pale band along crown (CAUTION: many **juvenile Sedge Warblers** show also pale stripe along crown until **postjuvenile** moult). **Moustached Warbler** has black crown, broader pale supercilium and white throat.



Reed Warbler



Moustached Warbler



Aquatic Warbler

SEXING

Plumage of both sexes alike.

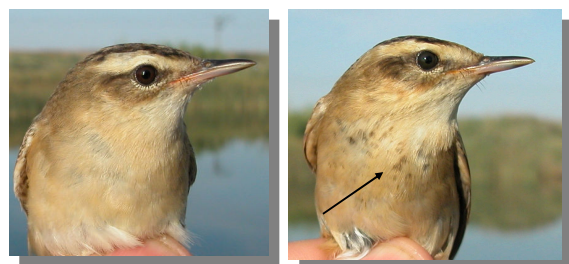
AGEING

2 types of age can be recognized:

Juvenile with fresh feathers (check flight feathers and tail); iris dark brown; breast with dark brown spots.

Adult in **autumn** with worn plumage; iris pale brown or reddish; breast unspotted.

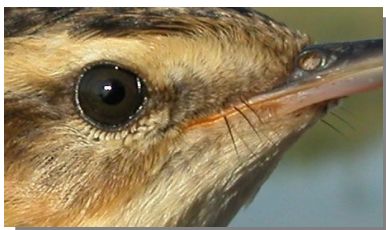
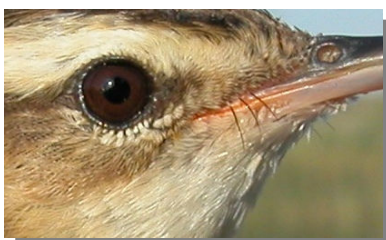
In **spring**, after the **postbreeding/postjuvenile** moults, ageing is not possible using plumage pattern.



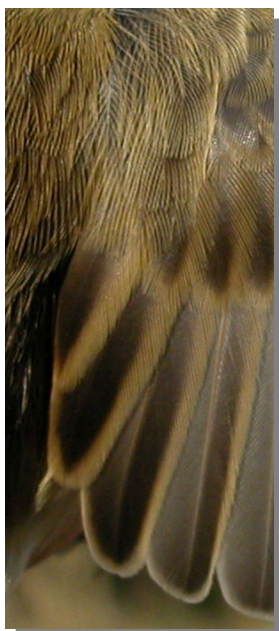
Sedge Warbler. Ageing. Pattern of breast: left adult; right juvenile.

356 Sedge Warbler

Put your logo here



Sedge Warbler.
Ageing. Colour of iris: top adult; bottom juvenile.



Sedge Warbler. Ageing. Wear of tertials: left adult; right juvenile.

MOULT

Partial **postbreeding** moult involving in breeding areas body feathers and sometimes inner greater coverts and some tail and flight feathers, finished in wintering sites. No **postjuvenile** moult (or just some body feathers) in breeding areas but complete in winter quarters.

PHENOLOGY

I	II	III	IV	V	VI	VII	VIII	IX	X	XI	XII

STATUS IN ARAGON

On passage, very common in marshlands of the Ebro Valley.



Sedge Warbler. Autumn. Adult (25-VIII).



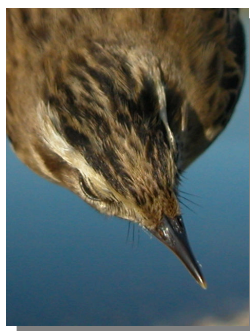
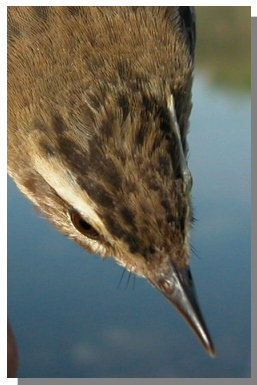
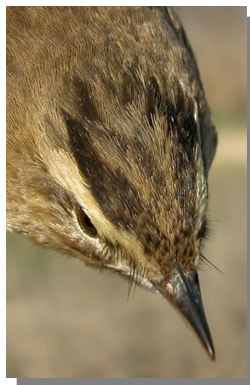
Sedge Warbler. Autumn. Juvenile (13-VIII).



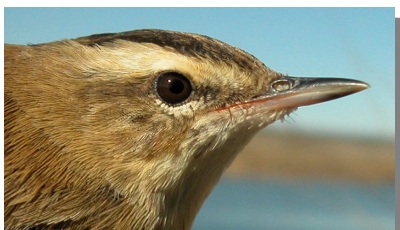
Sedge Warbler. Breast pattern: top left in spring (24-III); top right adult in autumn (25-VIII); left juvenile (13-VIII).

356 Sedge Warbler

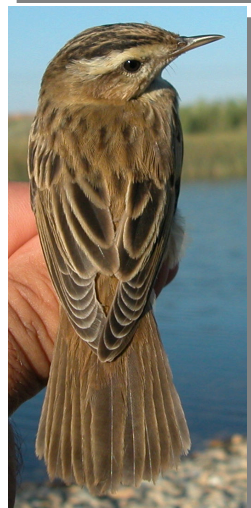
Put your logo here



Sedge Warbler. Crown pattern: top left in spring (24-III); top right adult in autumn (25-VIII); left juvenile (13-VIII).



Sedge Warbler. Head pattern and iris colour: top in spring (30-III) middle adult in autumn (25-VIII) ; bottom juvenile (13-VIII).



Sedge Warbler. Plumage wear: top left in spring (24-III); top right adult in autumn (25-VIII); left juvenile (13-VIII).



Sedge Warbler. Tail pattern: top left in spring (24-III); top right adult in autumn (25-VIII); left juvenile (13-VIII).

356 Sedge Warbler

[Put your logo here](#)



Sedge Warbler. Spring: pattern of wing (24-III).



Sedge Warbler. Autumn. Adult: pattern of wing (25-VIII).



Sedge Warbler. Autumn. Juvenile: pattern of wing (13-VIII).