

**12420 Aquatic Warbler** (*Acrocephalus paludicola*)

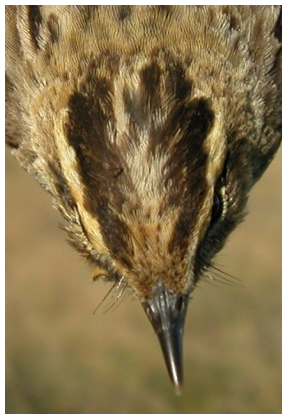


Aquatic Warbler. Autumn. Adult (29-VIII).

**AQUATIC WARBLER** (*Acrocephalus paludicola*)

**IDENTIFICATION**

12-13 cm. Brown reddish upperparts, streaked dark; yellow-white underparts; rufous rump with some mottled; distinct pale supercilium; with a pale stripe on central crown.



Aquatic Warbler. Pattern of crown and breast.



**SIMILAR SPECIES**

Recalls a **Reed Warbler**, without pale supercilium. Similar to **Sedge Warbler**, which lacks a pale band along crown (**CAUTION:** many **juvenile Sedge Warblers** show also pale stripe along crown until **postjuvenile** moult). **Moustached Warbler** has black crown, broader pale supercilium and white throat.



Moustached Warbler



Sedge Warbler



Reed Warbler



**SEXING**

Plumage of both sexes alike.

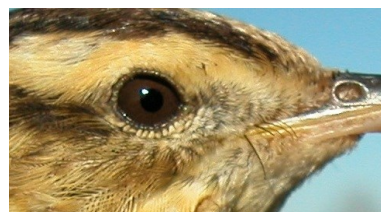
**AGEING**

2 types of age can be recognized:

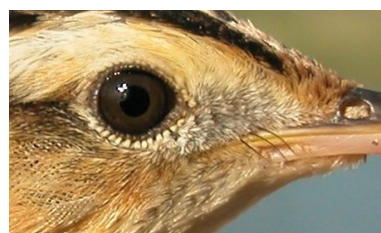
**Juvenile** with fresh feathers (check flight feathers and tail); iris dark brown; breast without dark brown spots or only softly mottled on throat.

**Adult** in **autumn** with worn plumage; iris pale brown or reddish; breast and flanks brown spotted.

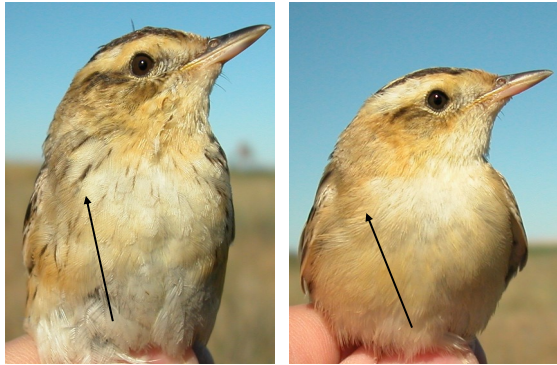
In **spring**, after **postbreeding/postjuvenile** moults, ageing is not possible using plumage pattern.



Aquatic Warbler. Ageing. Pattern of iris colour: top adult; bottom juvenile.



**12420 Aquatic Warbler** (*Acrocephalus paludicola*)



Aquatic Warbler. Ageing. Pattern of breast: left adult; right juvenile.



Aquatic Warbler. Autumn. Juvenile (25-VIII).



Aquatic Warbler. Ageing. Wear of tertials: left adult; right juvenile.



Aquatic Warbler. Autumn. Crown pattern: left adult (29-VIII); right juvenile (25-VIII).

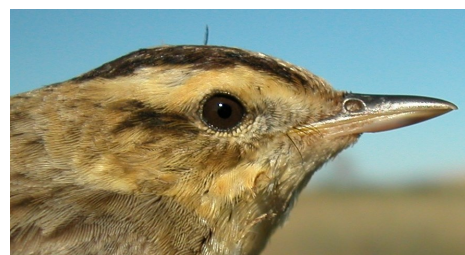
**MOULT**

Partial **postbreeding** moult involving in breeding areas body feathers and sometimes tertials and some tail and flight feathers, finished in wintering quarters. No **postjuvenile** moult in breeding areas but complete in wintering quarters.

**PHENOLOGY**

I	II	III	IV	V	VI	VII	VIII	IX	X	XI	XII

- Summer visitor
- Wintering
- Resident
- On passage



Aquatic Warbler. Autumn. Head pattern and iris colour: top adult (29-VIII); bottom juvenile (25-VIII).

**12420 Aquatic Warbler** (*Acrocephalus paludicola*)



Aquatic Warbler. Autumn. Upperparts pattern: left adult (29-VIII); right juvenile (25-VIII).



Aquatic Warbler. Autumn. Breast pattern: top left adult (29-VIII); top right juvenile with mottled breast (25-VIII); left juvenile with unmottled breast (29-VIII).



Aquatic Warbler. Autumn. Tail pattern: left adult (29-VIII); right juvenile (25-VIII).



Aquatic Warbler. Autumn. Adult: pattern of wing (29-VIII).



Aquatic Warbler. Autumn. Juvenile: pattern of wing (25-VIII).