

# 348 Mistle Thrush

[Put your logo here](#)



Mistle Thrush. Summer. Adult (02-VII).

## MISTLE THRUSH (*Turdus viscivorus*)

### IDENTIFICATION

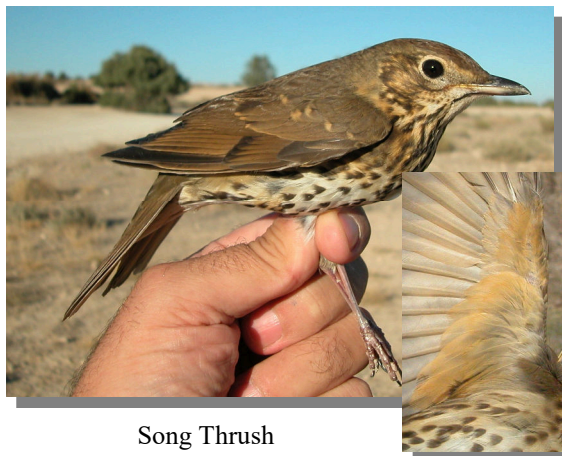
26-27 cm. Brownish-grey upperparts; whitish underparts, strongly streaked; brown wings with grey edged feathers; brown tail, with paler outermost feathers; white underwing coverts.



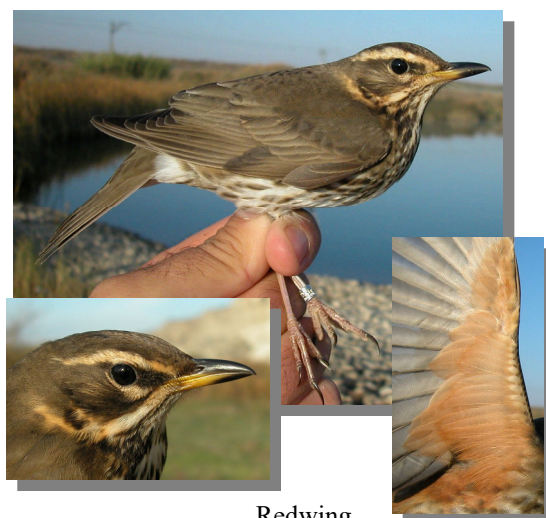
Mistle Thrush. Pattern of wing, breast, tail and underwing coverts.

### SIMILAR SPECIES

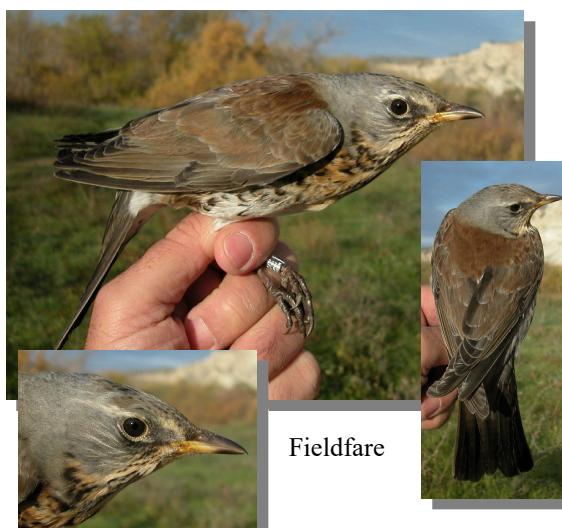
**Redwing** is smaller and has reddish underwing coverts. **Song Thrush** has rusty-buff underwing coverts. **Fieldfare** has a pale supercilium and grey upperparts.



Song Thrush



Redwing



Fieldfare



# 348 Mistle Thrush

Put your logo here

## SEXING

Plumage of both sexes alike.

## AGEING

3 age groups can be recognized:

**Juvenile** with upperparts strongly spotted pale; wing coverts with pale streaks along shaft; fresh plumage.

**1st year autumn/2nd year spring** with moult limit between moulted inner greater coverts (different colour and longer) and **juvenile** retained; tail feathers with pointed tips. **CAUTION:** shape of pale tip on greater coverts in **adults** is very variable.

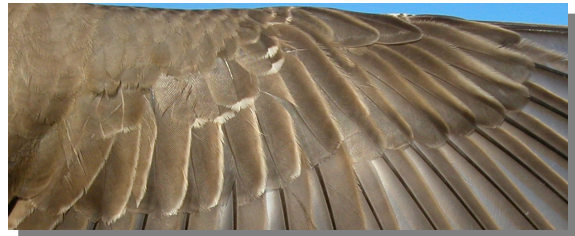
**Adult** without moult limit on wing coverts; tail feathers with rounded tips.



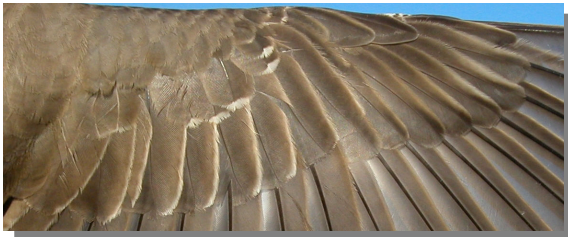
Mistle Thrush. Ageing. Pattern of tips of tail coverts: left adult; right 1st year.



Mistle Thrush. Ageing. Pattern of upperparts: left adult; right juvenile.



Mistle Thrush. Ageing. Moult limit on wing coverts: top adult; bottom 1st year.



Mistle Thrush. Ageing. Pattern of wing coverts: top adult; bottom juvenile.

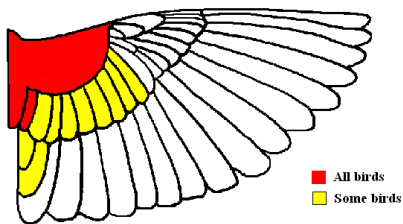
## MOULT

Complete **postbreeding** moult, usually finished in October. Partial **postjuvenile** moult involving body feathers, lesser and median coverts and none to all greater coverts; some birds extend their moult to both shortest tertials; usually finished in October.



**348 Mistle Thrush**

Put your logo here



Mistle Thrush.  
Extent of  
postjuvenile  
moult.

**PHENOLOGY**

I	II	III	IV	V	VI	VII	VIII	IX	X	XI	XII

**STATUS IN ARAGON**

Resident, with contribution of wintering European birds. Widely distributed throughout the Region in forested areas.



Mistle Thrush. Summer. 2nd year (02-VII).



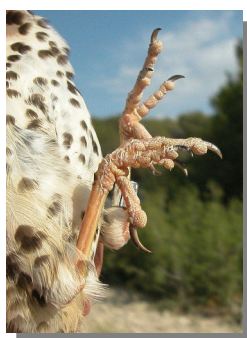
Mistle Thrush. Summer. Juvenile (08-VI).



Mistle Thrush.  
Summer.  
Head pattern:  
top adult (02-VII); middle 2nd year (02-VII); bottom juvenile (08-VI).



Mistle Thrush. Summer. Breast pattern:  
top left adult (02-VII); top right 2nd year (02-VII); left juvenile (08-VI).

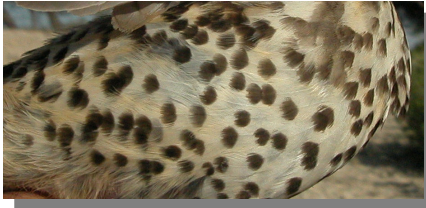


Mistle Thrush. Summer. Legs colour: left adult (08-VI); right juvenile (08-VI).

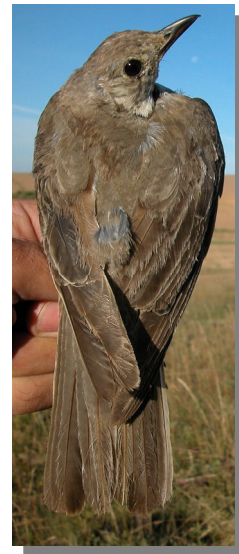


# 348 Mistle Thrush

Put your logo here



Mistle Thrush. Summer. Pattern of flank: top adult (08-VI); bottom juvenile (08-VI).



Mistle Thrush. Summer. Pattern of the outermost tail feather: left adult (08-VI); right juvenile (08-VI).



Mistle Thrush. Summer. Tail wear: top left adult (02-VII); top right 2nd year (02-VII); left juvenile (08-VI).



Mistle Thrush. Summer. Upperpart pattern: top left adult (02-VII); top right 2nd year (02-VII); left juvenile (08-VI).



Mistle Thrush. Summer. Adult: pattern of wing (02-VII).



# 348 Mistle Thrush

Put your logo here



Mistle Thrush. Summer. 2nd year: pattern of wing (02-VII).



Mistle Thrush. Summer. Juvenile: pattern of wing (08-VI).



Mistle Thrush. Autumn. Adult (10-XI).



Mistle Thrush. Autumn. 1st year (02-XI).



Mistle Thrush. Autumn. Head pattern: top adult (10-XI); bottom 1st year (02-XI).



Mistle Thrush. Autumn. Breast pattern: left adult (10-XI); right 1st year (02-XI).



Mistle Thrush. Autumn. Upperparts pattern: left adult (10-XI); right 1st year (02-XI).

## 348 Mistle Thrush

[Put your logo here](#)



Mistle Thrush. Autumn. Tail pattern: left adult (10-XI); right 1st year (02-XI).



Mistle Thrush. Autumn. Adult: pattern of wing (10-XI).



Mistle Thrush. Autumn. 1st year: pattern of wing (02-XI).