

**11660** Blue Rock Thrush (*Monticola solitarius*)



Blue Rock Thrush. Winter. Adult. Male (10-XII).

**BLUE ROCK THRUSH** (*Monticola solitarius*)

**IDENTIFICATION**

19-20 cm. **Male** with blue plumage; dark tail and wing. **Female** with grey brown upperparts; brown underparts barred dark; brown wings.



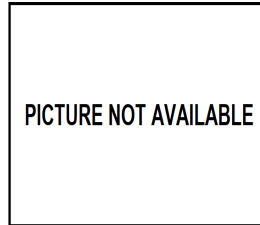
Blue Rock Thrush. Male: pattern of head.



Blue Rock Thrush. Female: pattern of head and tail.



Blue Rock Thrush. Juvenile: pattern of head and tertials.



**SIMILAR SPECIES**

**Male** is unmistakable. **Female** and **juvenile** similar to **Rock Thrush** ones which have reddish tails. **Juvenile Blackbird** without tertials with pale edges.



Rock Thrush. Female



Blackbird. Juvenile

**11660** Blue Rock Thrush (*Monticola solitarius*)

**SEXING**

**Male** with bluish plumage; under tail coverts grey bluish tipped buffish-white. **Female** with brownish plumage; barred underparts; undertail coverts sometimes tinged reddish. **CAUTION: adult females** have blue tinge on upperparts, throat and breast but always have a barred pattern. **Juveniles** cannot be sexed using plumage characters.



Blue Rock Thrush. Sexing. Pattern of breast: left male in winter; right female.



Blue Rock Thrush. Sexing. Pattern of undertail coverts: left male in winter; right female.

**AGEING**

3 types of age can be recognized:

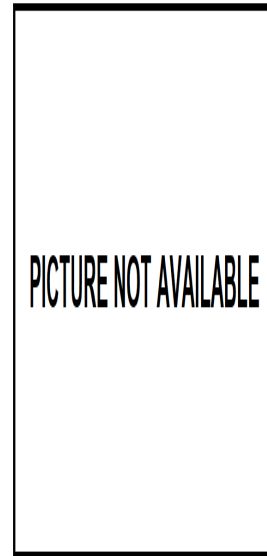
**Juvenile** similar to **females**, but with spotted upperparts; primary coverts with broad pale edge; fresh plumage.

**1st year autumn/2nd year spring** with moult limit between moulted and retained greater coverts

**Adult** without moult limit; primary coverts with narrow white edge.



Blue Rock Thrush. Ageing. Pattern of upperparts: top adult female; bottom juvenile



Blue Rock Thrush. Ageing. Pattern of upperparts: left adult female; right juvenile



Blue Rock Thrush. Ageing. Pattern of primary coverts: top adult; bottom juvenile



**11660** Blue Rock Thrush (*Monticola solitarius*)



Blue Rock Thrush. Ageing. Male. Pattern of greater coverts: top adult; bottom 1st year.

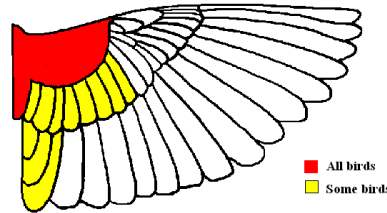


**PICTURE NOT AVAILABLE**

Blue Rock Thrush. Ageing. Female. Pattern of greater coverts: top adult; bottom 1st year.

**MOULT**

Complete **postbreeding** moult, usually finished in September. Partial **postjuvenile** moult including body feathers, lesser and median coverts and a variable number of greater coverts; some birds can moult tertials and tail feathers; usually finished late September.



Blue Rock Thrush. Extent of postjuvenile moult.

**PHENOLOGY**

I	II	III	IV	V	VI	VII	VIII	IX	X	XI	XII

- Summer visitor
- Wintering
- Resident
- On passage



Blue Rock Thrush. Summer. Adult. Male (09-VII).

**11660** Blue Rock Thrush (*Monticola solitarius*)



Blue Rock Thrush. Adult. Female (20-III).



Blue Rock Thrush. 1st year. Male (09-XII).



Blue Rock Thrush. 1st year. Female ().



Blue Rock Thrush. Juvenile ().



Blue Rock Thrush. Adult. Head pattern: top male in winter (10-XII); middle male in summer (09-VII); bottom female (20-III).

Blue Rock Thrush. Head pattern: top 1st year: male (09-XII); middle 1st year female (); bottom juvenile ().



Blue Rock Thrush. Adult. Breast pattern: top left male in winter (10-XII); top right male in summer (09-VII); left female (20-III).

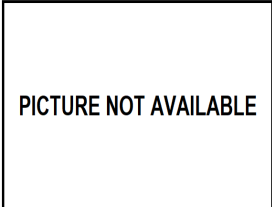
**11660** Blue Rock Thrush (*Monticola solitarius*)



PICTURE NOT AVAILABLE

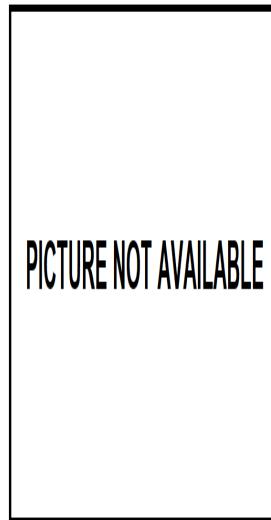


PICTURE NOT AVAILABLE



PICTURE NOT AVAILABLE

Blue Rock Thrush. Breast pattern: top left 1st year: male (09-XII); top right 1st year female (); left juvenile ().



PICTURE NOT AVAILABLE

Blue Rock Thrush. Upperparts pattern: top left 1st year: male (09-XII); top right 1st year female (); left juvenile ().



Blue Rock Thrush. Adult. Upperparts pattern: top left male in winter (10-XII); top right male in summer (09-VII); left female (20-III).



Blue Rock Thrush. Adult. Tail pattern: left male (18-X); right female (20-III).

**11660** Blue Rock Thrush (*Monticola solitarius*)



PICTURE NOT AVAILABLE



PICTURE NOT AVAILABLE



Blue Rock Thrush. Tail pattern: top left 1st year: male (09-XII); top right 1st year female (); left juvenile (25-VI) (Photo: David Mazuelas, Lidia. Roncero, Óscar Gutiérrez).

Blue Rock Thrush. Pattern of primary coverts: top 1st year: male (09-XII); middle 1st year female (); bottom juvenile (25-VI) (Photo: David Mazuelas, Lidia. Roncero, Óscar Gutiérrez).



Blue Rock Thrush. Adult. Pattern of primary coverts: top male in winter (10-XII); middle male in summer (09-VII); bottom female (20-III).



Blue Rock Thrush. Adult. Male: pattern of wing (10-XII).



Blue Rock Thrush. Adult. Female: pattern of wing (20-III).



Blue Rock Thrush. 1st year with reduced moult. Male: pattern of wing (09-XII).



Blue Rock Thrush. 1st year with extensive moult. Male: pattern of wing (18-X) (Photo: Eduardo Amengual).

**PICTURE NOT AVAILABLE**

Blue Rock Thrush. 1st year. Female: pattern of wing ().



Blue Rock Thrush. Juvenile: pattern of wing (25-VI) (Photo: David Mazuelas, Lidia. Roncero, Óscar Gutiérrez).