

**337 Black-eared Wheatear**

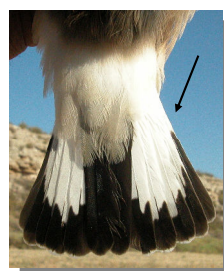
Put your logo here



Black-eared Wheatear. Spring. Adult. Male (03-IV).

**BLACK-EARED WHEATEAR**  
(*Oenanthe hispanica*)**IDENTIFICATION**

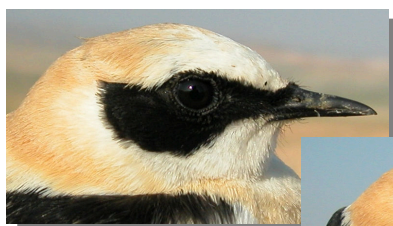
14-15 cm. **Male** in **breeding** plumage with red-dish brown upperparts; rump and uppertail coverts whitish; black wings; throat and sides of head black or black only on sides of head; white underparts. **Female** with brown upperparts; white rump; brown wings; rufous underparts. Both sexes have black central tail feathers and dark terminal band broader on sides; 10th primary similar or longer than primary coverts; 6th to 8th primaries emarginated.



Black-eared Wheatear. Female: pattern of head, upperparts, wing formula and tail.

**SIMILAR SPECIES**

**Male** is unmistakable. **Female** recalls a **Wheatear**, with band on tail feathers broad in the middle and narrow on sides; 10th primary usually shorter than primary coverts; 7th to 8th primaries emarginated.



Black-eared Wheatear. Spring. Male: pattern of head and upperparts.



Wheatear. Female: wing formula and tail pattern.





# 337 Black-eared Wheatear

[Put your logo here](#)

## SEXING

**Male** with black ear-coverts (1st year birds with reddish tips) and two morphs: pale throated or black throated; black wings; black underwing coverts; centre of lesser coverts always blackish. **Female** with brown wings; dark brown underwing coverts, usually with whitish edges; centre of lesser coverts grey brown.



Black-eared Wheatear. Spring. Sexing. Pattern of head: top male; bottom female.



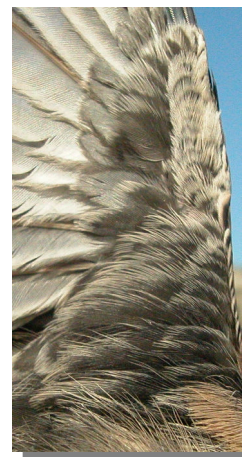
Black-eared Wheatear. Autumn. Sexing. Pattern of head: top male; bottom female.



Black-eared Wheatear. Autumn. 1st year. Sexing. Pattern of head: top male; bottom female.



Wheatear. Spring. Sexing. Pattern of wing coverts: top male; bottom female.



Black-eared Wheatear. Autumn. Sexing. Pattern of underwing coverts: left male; right female.



# 337 Black-eared Wheatear

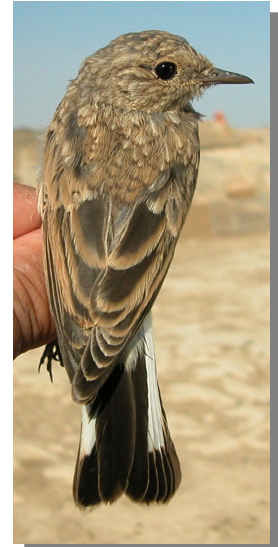
Put your logo here



Black-eared Wheatear. Ageing. Pattern of breast: left adult; right juvenile.



Black-eared Wheatear. Autumn. Adult. Sexing. Pattern of wing coverts: top male; bottom female.



Black-eared Wheatear. Ageing. Pattern of upper-parts: left adult; right juvenile.



Black-eared Wheatear. Autumn. 1st year. Sexing. Pattern of wing coverts: top male; bottom female.

## AGEING

3 age groups can be recognized:

**Juvenile** with fresh plumage; body feathers spotted white; inside of upper mandible yellow.

**1st year autumn/2nd year spring** with moult limit on wing, usually within greater coverts with darker inner renewed and paler outer **juvenile** retained, easier to see in **males**; some birds still with yellow colour inside of upper mandible in their **2nd year**.

**Adult** without moult limit on wing feathers; dark colour inside of upper mandible.

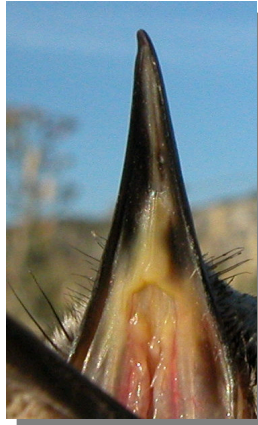


Black-eared Wheatear. Ageing. Colour inside of upper mandible: left adult; right juvenile.

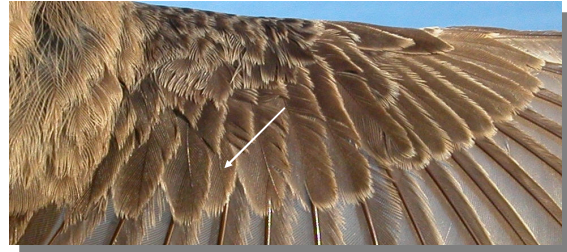


# 337 Black-eared Wheatear

Put your logo here



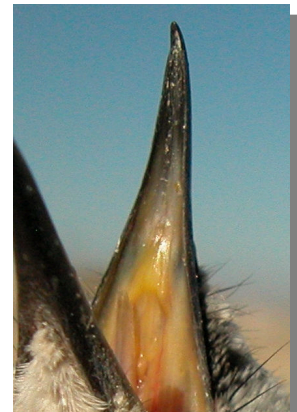
Black-eared Wheatear. Spring. Ageing. Colour inside of upper mandible: left adult; right 2nd year.



Black-eared Wheatear. Spring. Female. Ageing. Mould limit on wing coverts: top adult; bottom 2nd year.



Black-eared Wheatear. Spring. Ageing. Wear of tail feathers: left adult; right 2nd year.



Black-eared Wheatear. Autumn. Ageing. Colour inside of upper mandible: left adult; right 1st year.



Black-eared Wheatear. Spring. Male. Ageing. Mould limit on wing coverts: top adult; bottom 2nd year.

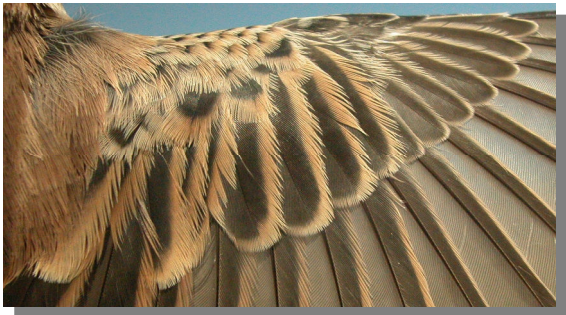


Black-eared Wheatear. Autumn. Male. Ageing. Mould limit on wing coverts: top adult; bottom 1st year.



337 Black-eared Wheatear

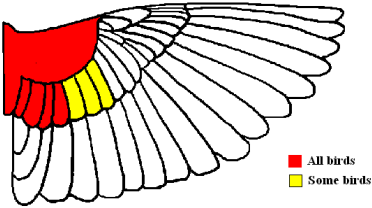
Put your logo here



Black-eared Wheatear. Autumn. Female. Ageing. Moulting limit on wing coverts: top adult; bottom 1st year.

MOULT

Complete **postbreeding** moult, usually finished in August. Partial **postjuvenile** moult involving body feathers, lesser and median wing coverts and some inner greater coverts; some birds renew inner tertials and the smallest alula; usually finished in August. Both age classes may have a **prebreeding** moult limited to some body feathers.



Black-eared Wheatear. Extent of postjuvenile moult.

PHENOLOGY

I	II	III	IV	V	VI	VII	VIII	IX	X	XI	XII

STATUS IN ARAGON

Summer visitor. Widely distributed throughout the Region, absent only from some areas of the Pyrenees.



Black-eared Wheatear. Spring. Adult. Female (03-IV).



Black-eared Wheatear. Spring. 2nd year. Male (31-V).



Black-eared Wheatear. Spring. 2nd year. Female (31-V).



# 337 Black-eared Wheatear

Put your logo here



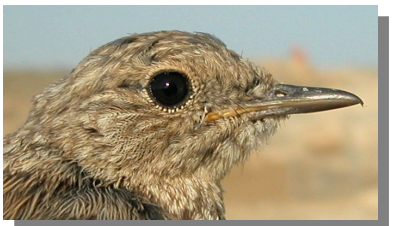
Black-eared Wheatear. Juvenile (08-VII)



Black-eared Wheatear. Spring. Breast pattern: top left male pale throated (03-IV); top right male black throated (31-V); middle left female (03-IV); bottom juvenile (08-VII).



Black-eared Wheatear. Spring. Head pattern. From top to bottom: male pale throated (03-IV); male black throated (31-V); female (03-IV); juvenile (08-VII).

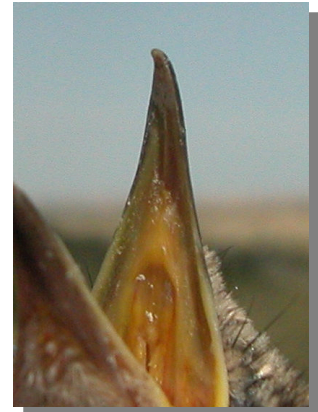
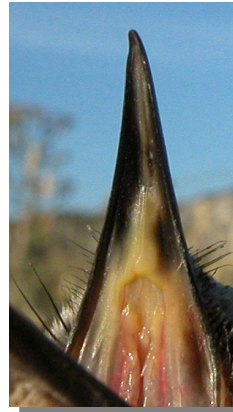


Black-eared Wheatear. Spring. Adult. Upperparts pattern: left male (03-IV); right female (03-IV).



# 337 Black-eared Wheatear

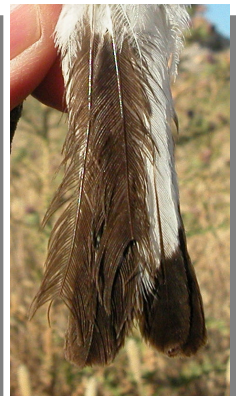
Put your logo here



Black-eared Wheatear. Spring. Colour inside of upper mandible: left 2nd year female (31-V); right juvenile (24-VI).



Black-eared Wheatear. Spring. Upperparts pattern: top left 2nd year male (31-V); top right 2nd year female (30-V); left juvenile (08-VII).



Black-eared Wheatear. Spring. Tail pattern: top left 2nd year male (31-V); top right 2nd year female (30-V); left juvenile (08-VII).



Black-eared Wheatear. Spring. Adult. Colour inside of upper mandible: left male (31-V); right female (31-V).



## 337 Black-eared Wheatear

Put your logo here



Black-eared Wheatear. Spring. Adult. Tail pattern: left male (03-IV); right female (03-IV).



Black-eared Wheatear. Spring. 2nd year. Male: pattern of wing (31-V)



Black-eared Wheatear. Spring. Adult. Male: pattern of wing (03-IV)



Black-eared Wheatear. Spring. 2nd year. Female: pattern of wing (30-V)



Black-eared Wheatear. Spring. Adult. Female: pattern of wing (03-IV)



Black-eared Wheatear. Spring. Juvenile: pattern of wing (08-VII).



# 337 Black-eared Wheatear

Put your logo here



Black-eared Wheatear. Autumn. Adult. Male (20-VIII)



Black-eared Wheatear. Autumn. 1st year. Male pale throated (31-VIII)



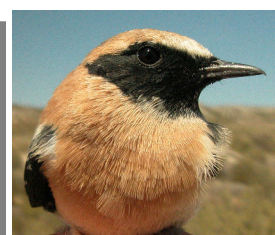
Black-eared Wheatear. Autumn. Adult. Female (20-VIII)



Black-eared Wheatear. Autumn. 1st year. Female (20-VIII)



Black-eared Wheatear. Autumn. 1st year. Male black throated (02-IX)



Black-eared Wheatear. Autumn. Adult. Breast pattern: top left male pale throated (20-VIII); top right male black throated (12-VIII); left female (20-VIII).



# 337 Black-eared Wheatear

Put your logo here



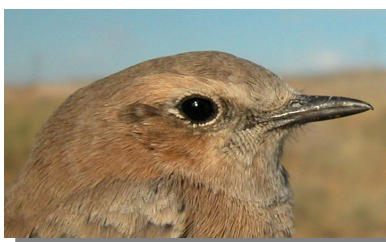
Black-eared Wheatear. Autumn. 1st year. Head pattern: top male pale throated (31-VIII); middle male black throated (02-IX); bottom female (20-VIII)



Black-eared Wheatear. Autumn. 1st year. Breast pattern: top left male pale throated (31-VIII); top right male black throated (02-IX); left female (20-VIII).



Black-eared Wheatear. Autumn. Adult. Head pattern: top male pale throated (20-VIII); middle male black throated (12-VIII); bottom female (20-VIII).

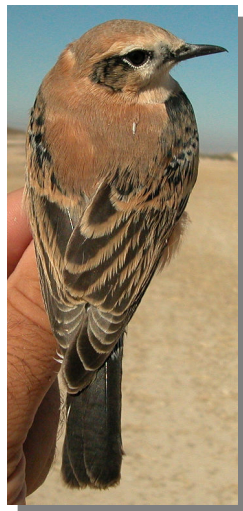
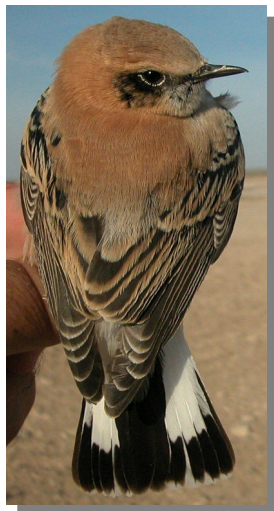


Black-eared Wheatear. Autumn. Adult. Upperparts pattern: left male (20-VIII); right female (12-VIII).

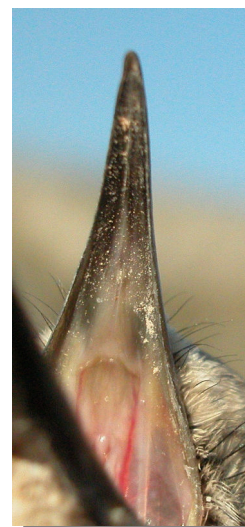


# 337 Black-eared Wheatear

Put your logo here



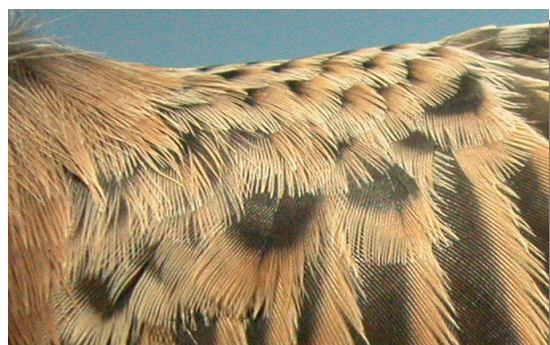
Black-eared Wheatear. Autumn. 1st year. Up-perparts pattern: top left male black throated (02-IX); top right male pale throated (31-VIII); left female (20-VIII).



Black-eared Wheatear. Autumn. Colour inside of upper mandible: top left adult male (12-VIII); top right adult female (12-VIII); left 1st year (31-VIII).



Black-eared Wheatear. Autumn. Tail wear: left adult (12-VIII); right 1st year (31-VIII).



Black-eared Wheatear. Autumn. Adult. Pattern of lesser coverts: top male (12-VIII); bottom female (12-VIII).



## 337 Black-eared Wheatear

[Put your logo here](#)



Black-eared Wheatear. Autumn. 1st year. Pattern of lesser coverts: top male (31-VIII); bottom female (20-VIII).



Black-eared Wheatear. Autumn. Pattern of underwing coverts: left male (12-VIII); right female (12-VIII).



Black-eared Wheatear. Autumn. Adult. Male: pattern of wing (12-VIII)



Black-eared Wheatear. Autumn. Adult. Female: pattern of wing (12-VIII)



Black-eared Wheatear. Autumn. 1st year. Male: pattern of wing (31-VIII)



Black-eared Wheatear. Autumn. 1st year. Female: pattern of wing (20-VIII)