

333 Whinchat

[Put your logo here](#)



Whinchat. Spring. Adult. Male (16-IV).

WHINCHAT (*Saxicola rubetra*)

IDENTIFICATION

12-13 cm. Brown upperparts, spotted dark; head with white supercilium, white in **male**, yellowish in **female**, brown wing, with white patch on inner coverts; dark tail with white base.

SIMILAR SPECIES

Similar to **female** and **juveniles** Stonechat, without white supercilium and lacks white patch on base of the tail feathers.



Stonechat. Female



Whinchat. Spring. Adult. Pattern of head of male (top) and female (bottom) and tail.



Whinchat. Juvenile. Pattern of head and tail (Photos: Ottenby Bird Observatory).



Stonechat. Juvenile.

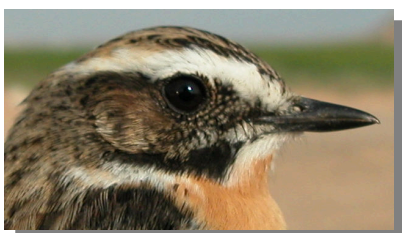
333 Whinchat

Put your logo here

SEXING

In **breeding** plumage, **male** with brown-black ear-coverts; pure white supercilium; tail feathers with a distinct separation between white base and dark tip; without dark spots on breast; one or more inner median coverts and one or two inner greater coverts pure white. **Female** with brownish ear-coverts; buff whitish supercilium; tail feathers with a diffuse separation between white base and dark tip; most of birds (but not all) with dark spots on breast; inner median and greater coverts never completely white, often edged or tipped white. In **autumn**, both sexes with quite similar plumage but can be sexed at any age by pattern of inner greater coverts and tail: **male** with one or a few inner median coverts all white (**CAUTION**: sometimes only white edged); 3-5 inner greater coverts much white basally. **Female** with inner median coverts never all white; inner greater coverts less white basally or without white; tail pattern like in **breeding** plumage.

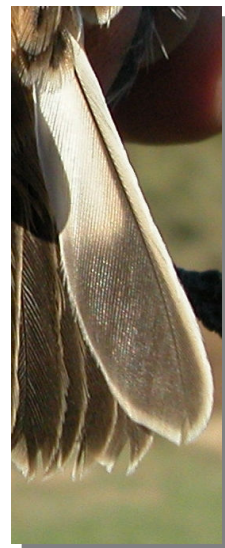
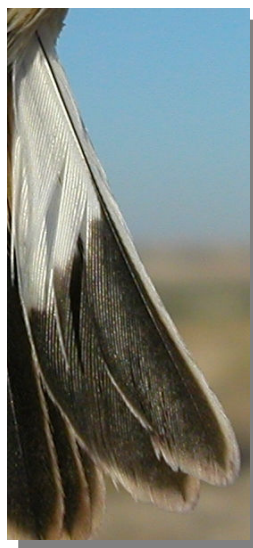
(**CAUTION**: some birds have intermediate wing and tail pattern and cannot be sexed).



Whinchat. Spring. Sexing. Pattern of head: top male; bottom female.



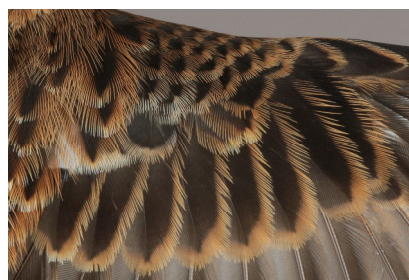
Whinchat. Spring. Sexing. Pattern of breast: left male; right female.



Whinchat. Sexing. Pattern of tail feathers: left male; right female.



Whinchat. Spring. Sexing. Pattern of wing coverts: top male; bottom female.



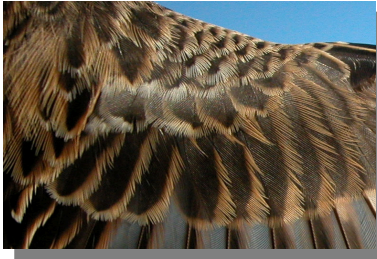
Whinchat. Juvenile. Sexing. Pattern of wing coverts: top male; bottom female (Photos: Ottenby Bird Observatory).

333 Whinchat

Put your logo here



Whinchat.
Autumn.
Sexing. Pat-
tern of wing
coverts: top
male; bot-
tom female.



Whinchat.
Ageing. Pat-
tern of head:
top adult fe-
male; bottom
juvenile
(Photo: Otten-
by Bird Ob-
servatory).



AGEING

5 types of age can be recognized:

Juvenile with fresh plumage; inside of upper mandible pinkish or yellow.

1st year autumn with moult limit within darker moulted inner greater coverts and paler retained **juvenile** outer (**CAUTION:** if none greater covert moulted, then limit is within median coverts); iris colour dark grey; pale colour inside of upper mandible. **Male** with moulted inner median coverts almost all white; inner greater coverts buff-white but sometimes limited to shaft streak. **Female** with median and greater coverts without white or only at base.

Adult in **autumn** without moult limits on wing; iris colour brownish to clear brown; dark colour inside of upper mandible. **Male** with one or more inner median coverts completely white. **Female** sometimes with some white on inner median coverts but then not completely white.

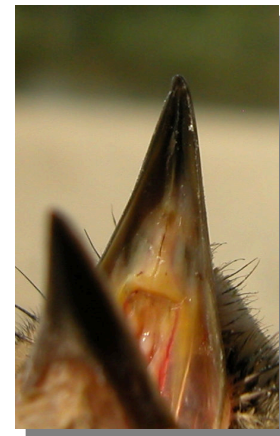
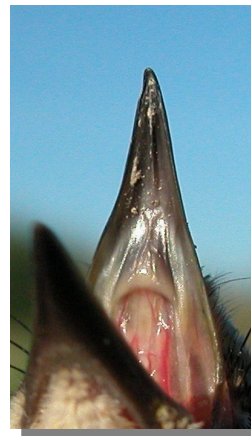
2nd year spring with worn flight feathers; iris still grey with only a trace of brown; some birds keep pale colour inside of upper mandible; both **adult** and **2nd year** have wings with two generations of feathers due to **prebreeding** moult, but in **2nd year males** moult contrast between moulted inner greater coverts and **juvenile** retained outer and primary coverts is very distinct (**CAUTION:** in **females** this moult limit is very difficult to see).

Adult in **spring** with flight feathers slightly worn; both sexes have moult limit between inner greater coverts and outer and primary coverts but is only slight in **males** and very difficult to see in **females**.

CAUTION: ageing **females** in **spring** is sometimes impossible.



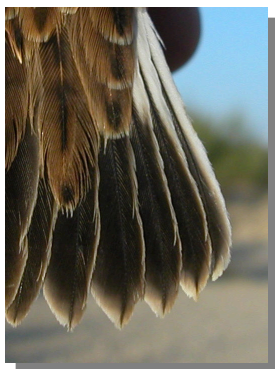
Whinchat. Ageing. Pattern of breast: left adult female; right juvenile (Photo: Ottenby Bird Observatory).



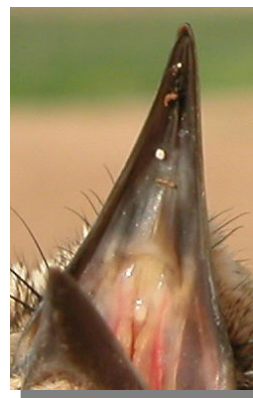
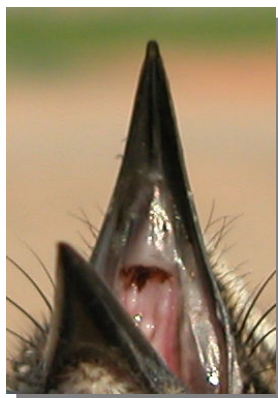
Whinchat. Autumn. Ageing. Colour inside of upper mandible: left adult; right 1st year.

333 Whinchat

Put your logo here



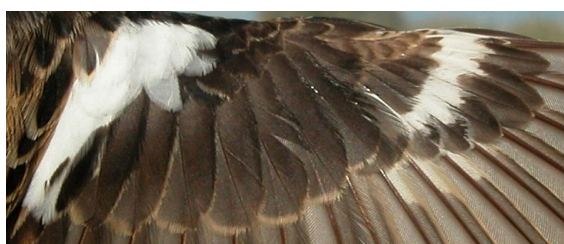
Whinchat. Autumn. Ageing. Pattern of tips of tail feathers: left adult; right 1st year.



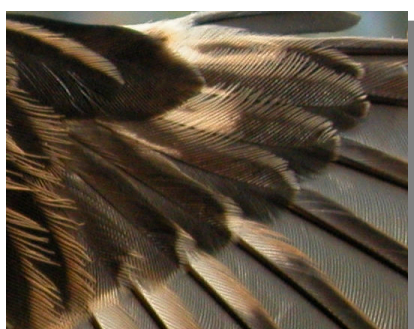
Whinchat. Spring. Ageing. Colour inside of upper mandible: left adult; right 2nd year.



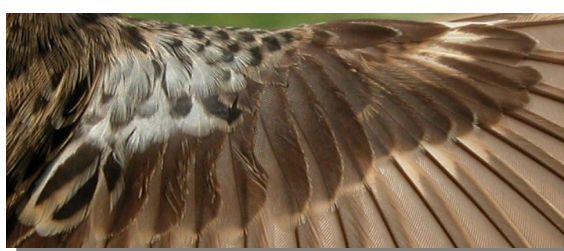
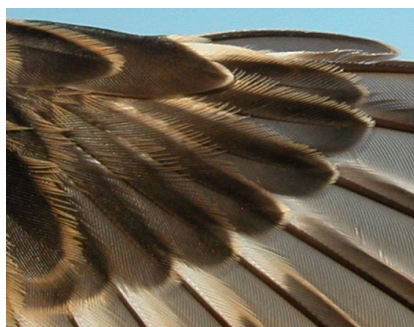
Whinchat. Autumn. Male. Ageing. Pattern of primary coverts: top adult; bottom 1st year.



Whinchat. Spring. Male. Ageing. Pattern of wing coverts: top adult; bottom 2nd year.



Whinchat. Autumn. Female. Ageing. Pattern of primary coverts: top adult; bottom 1st year.



Whinchat. Spring. Female. Ageing. Pattern of wing coverts: top adult; bottom 2nd year.

333 Whinchat

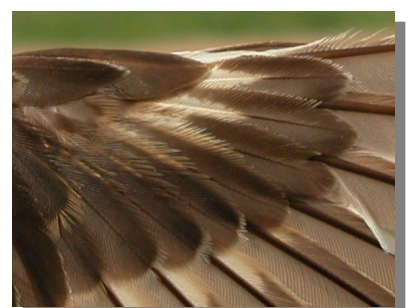
Put your logo here



Whinchat.
Spring.
Male.
Ageing.
Pattern of
primary
coverts: top
adult; bot-
tom 2nd
year.

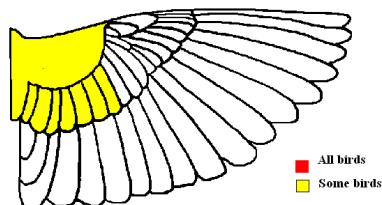


Whinchat.
Spring.
Female.
Ageing.
Pattern of
primary
coverts: top
adult; bot-
tom 2nd
year.



MOULT

Complete **postbreeding** moult, usually finished in September before migration. Partial **postjuvenile** moult very variable involving body feathers, all or part of lesser coverts, all or part of median coverts, none to 7 inner greater coverts and, exceptionally, some tail feathers; generally finished in September. Both age classes have a **prebreeding** moult including body feathers, lesser and median coverts and often some inner greater coverts.



Whinchat.
Extent of
postjuvenile
moult.

PHENOLOGY

I	II	III	IV	V	VI	VII	VIII	IX	X	XI	XII

STATUS IN ARAGON

Scarce breeders in Central Pyrenees; widely distributed on passage.



Whinchat. Spring. Adult. Female (16-IV)

333 Whinchat

[Put your logo here](#)



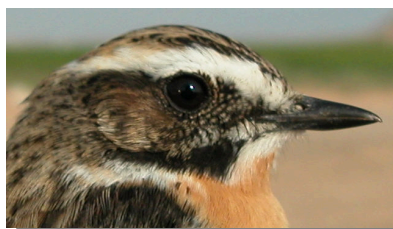
Whinchat. Spring. 2nd year. Male (16-IV)



Whinchat. Spring. Juvenile. Female (04-VIII)
(Photo: Ottenby Bird Observatory)



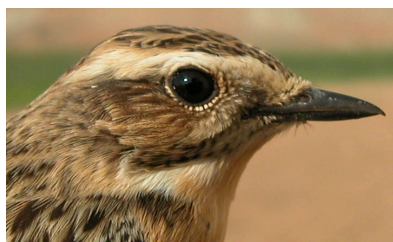
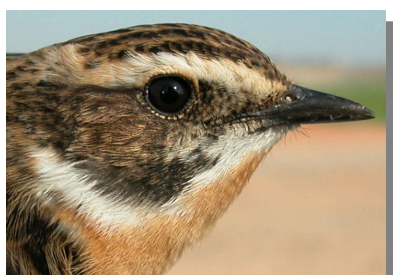
Whinchat. Spring. 2nd year. Female (16-IV)



Whinchat.
Spring.
Adult. Head
pattern: top
male (16-
IV); bottom
female (16-
IV).



Whinchat. Spring. Juvenile. Male (30-VII) (Photo:
Ottenby Bird Observatory)



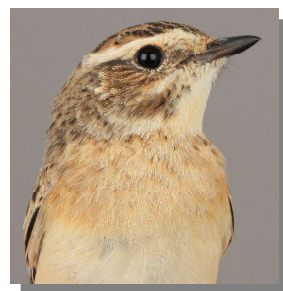
Whinchat.
Spring. 2nd
year. Head
pattern: top
male (16-
IV); bottom
female (16-
IV).

333 Whinchat

Put your logo here



Whinchat. Spring. Juvenile. Head pattern: top male (30-VII) (Photo: Ottenby Bird Observatory); bottom female (04-VIII) (Photo: Ottenby Bird Observatory).



Whinchat. Spring. Juvenile. Breast pattern: left male (30-VII) (Photo: Ottenby Bird Observatory); right female (04-VIII) (Photo: Ottenby Bird Observatory).



Whinchat. Spring. Adult. Breast pattern: left male (16-IV); right female (16-IV).



Whinchat. Spring. Adult. Upperpart pattern: left male (16-IV); right female (16-IV).



Whinchat. Spring. 2nd year. Breast pattern: left male (16-IV); right female (16-IV).



Whinchat. Spring. 2nd year. Upperpart pattern: left male (16-IV); right female (16-IV).

333 Whinchat

Put your logo here



Whinchat. Spring. Juvenile. Upperpart pattern: left male (30-VII) (Photo: Ottenby Bird Observatory); right female (04-VIII) (Photo: Ottenby Bird Observatory).



Whinchat. Spring. Juvenile. Male; tail pattern (30-VII) (Photo: Ottenby Bird Observatory).



Whinchat. Spring. Juvenile. Female; tail pattern (04-VIII) (Photo: Ottenby Bird Observatory).



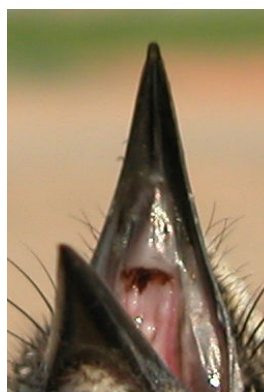
Whinchat. Spring. Adult. Tail pattern: left male (16-IV); right female (16-IV).



Whinchat. Spring. Adult. Colour inside of upper mandible: left male (16-IV); right female (16-IV).



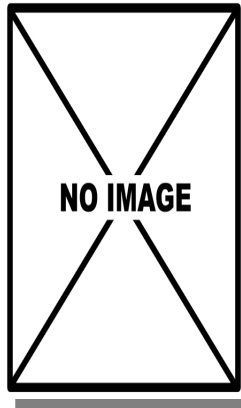
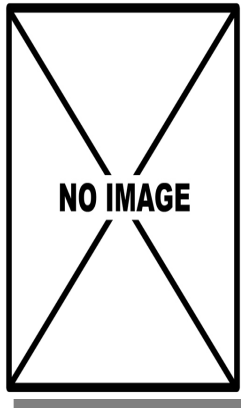
Whinchat. Spring. 2d year. Tail pattern: left male (16-IV); right female (16-IV).



Whinchat. Spring. 2d year. Colour inside of upper mandible: left male (16-IV); right female (16-IV).

333 Whinchat

Put your logo here



Whinchat. Spring. Juvenile. Colour inside of upper mandible: left male (); right female ().



Whinchat. Spring. 2nd year. Male: pattern of wing coverts (16-IV).



Whinchat. Spring. Adult. Male: pattern of wing coverts (16-IV).



Whinchat. Spring. 2nd year. Female: pattern of wing coverts (16-IV).



Whinchat. Spring. Adult. Female: pattern of wing coverts (16-IV).



Whinchat. Spring. Juvenile. Male: pattern of wing coverts (30-VII) (Photo: Ottenby Bird Observatory).

333 Whinchat

[Put your logo here](#)



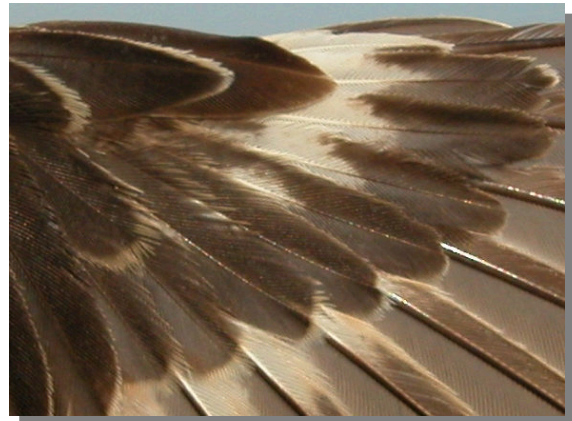
Whinchat. Spring. Juvenile. Female: pattern of wing coverts (04-VIII) (Photo: Ottenby Bird Observatory).



Whinchat. Spring. Adult. Male: pattern of primary coverts (16-IV).



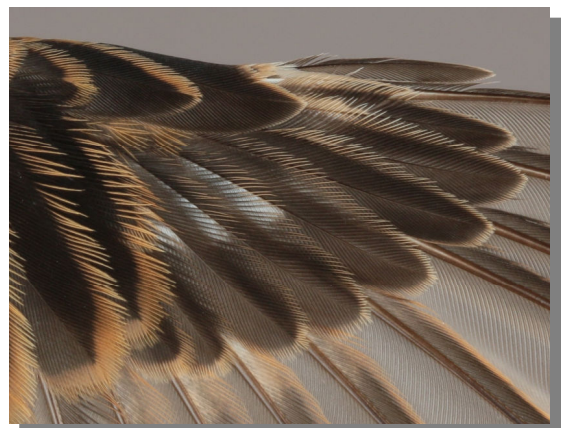
Whinchat. Spring. Adult. Female: pattern of primary coverts (16-IV).



Whinchat. Spring. 2nd year. Male: pattern of primary coverts (16-IV).



Whinchat. Spring. 2nd year. Female: pattern of primary coverts (16-IV).



Whinchat. Spring. Juvenile. Male: pattern of primary coverts (30-VII) (Photo: Ottenby Bird Observatory).

333 Whinchat

[Put your logo here](#)



Whinchat. Spring. Juvenile. Female: pattern of primary coverts (04-VIII) (Photo: Ottenby Bird Observatory).



Whinchat. Spring. Adult. Male: pattern of wing (16-IV).



Whinchat. Spring. Adult. Female: pattern of wing (16-IV).



Whinchat. Spring. 2nd year. Male: pattern of wing (16-IV).



Whinchat. Spring. 2nd year. Female: pattern of wing (16-IV).



Whinchat. Spring. Juvenile. Male: pattern of wing (30-VII) (Photo: Ottenby Bird Observatory).



Whinchat. Spring. Juvenile. Female: pattern of wing (04-VIII) (Photo: Ottenby Bird Observatory).

333 Whinchat

[Put your logo here](#)



Whinchat. Autumn. Adult. Male (10-IX).



Whinchat. Autumn. 1st year. Female (09-IX).



Whinchat. Autumn. Adult. Female (24-IX).



Whinchat.
Autumn.
Adult. Head
pattern: top
male (10-
IX); bottom
female (24-
IX).



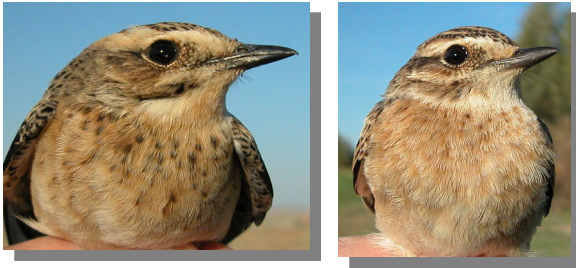
Whinchat. Autumn. 1st year. Male (12-IX).



Whinchat.
Autumn. 1st
year. Head
pattern: top
male (12-
IX); bottom
female (09-
IX).

333 Whinchat

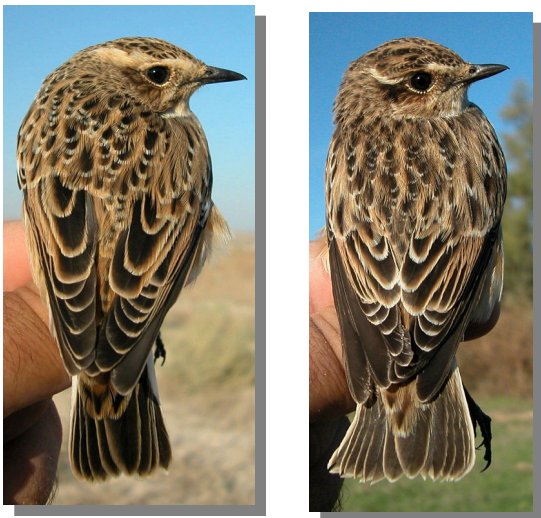
Put your logo here



Whinchat. Autumn. Adult. Breast pattern: left male (10-IX); right female (24-IX).



Whinchat. Autumn. 1st year. Breast pattern: left male (12-IX); right female (09-IX).



Whinchat. Autumn. Adult. Upperparts pattern: left male (10-IX); right female (24-IX).



Whinchat. Autumn. 1st year. Upperparts pattern: left male (12-IX); right female (09-IX).



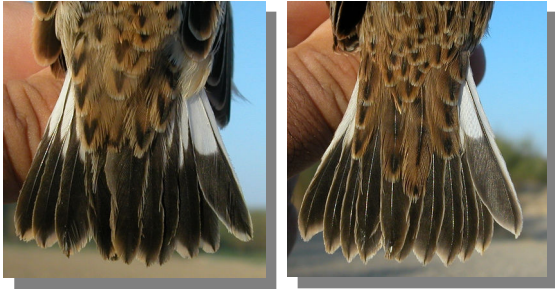
Whinchat. Autumn. Colour inside of upper mandible: left adult (24-IX); right 1st year (09-IX).



Whinchat. Autumn. Adult. Tail pattern: left male (10-IX); right female (24-IX).

333 Whinchat

[Put your logo here](#)



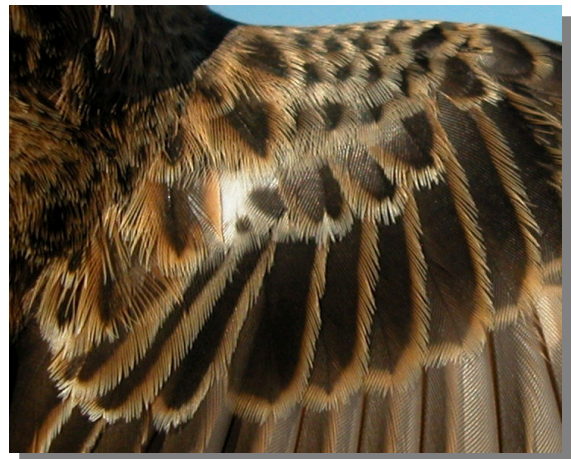
Whinchat. Autumn. 1st year. Tail pattern: left male (12-IX); right female (09-IX).



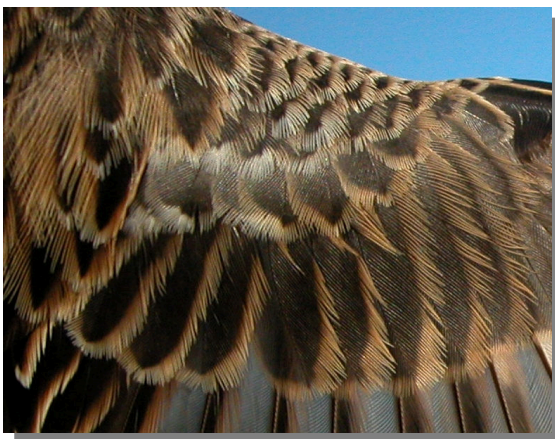
Whinchat. Autumn. 1st year. Male: pattern of wing coverts (12-IX).



Whinchat. Autumn. Adult. Male: pattern of wing coverts (10-IX).



Whinchat. Autumn. 1st year. Female: pattern of wing coverts (09-IX).



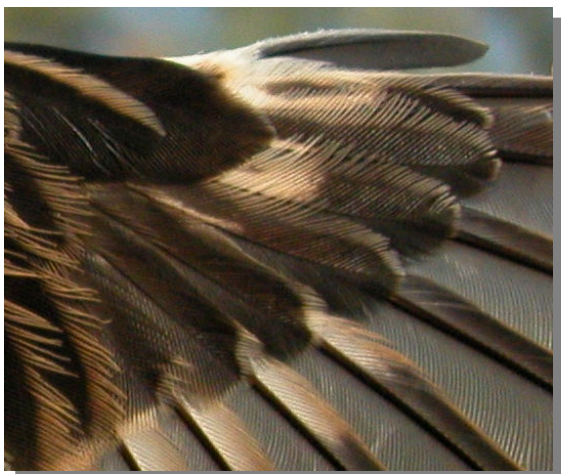
Whinchat. Autumn. Adult. Female: pattern of wing coverts (24-IX).



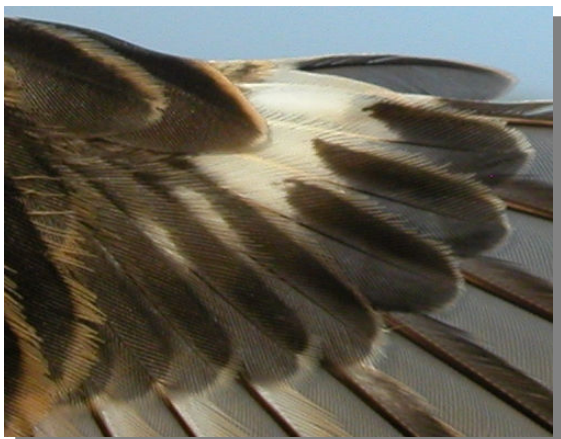
Whinchat. Autumn. Adult. Male: pattern of primary coverts (10-IX).

333 Whinchat

Put your logo here



Whinchat. Autumn. Adult. Female: pattern of primary coverts (24-IX).



Whinchat. Autumn. 1st year. Male: pattern of primary coverts (12-IX).



Whinchat. Autumn. 1st year. Female: pattern of primary coverts (09-IX).



Whinchat. Autumn. Adult. Male: pattern of wing (10-IX)



Whinchat. Autumn. Adult. Female: pattern of wing (24-IX)



Whinchat. Autumn. 1st year. Male: pattern of wing (12-IX).



Whinchat. Autumn. 1st year. Female: pattern of wing (09-IX).