

331 Black Redstart

[Put your logo here](#)



Black Redstart. Summer. Adult. Male (09-VII).

BLACK REDSTART (*Phoenicurus ochruros*)

IDENTIFICATION

13-15 cm. **Adult male** black in **summer**, grey blackish in **winter**, with a white patch on wings. **Female**, **juvenile** and some **postjuvenile** males with brown plumage. In all plumages, rump and tail reddish.

SIMILAR SPECIES

Adult male unmistakable. **Female** and **juvenile** recalls a **Nightingale** which is bigger and without dark central tail feathers. **Female** and **juvenile Redstart** have brown upperparts and buff underparts.



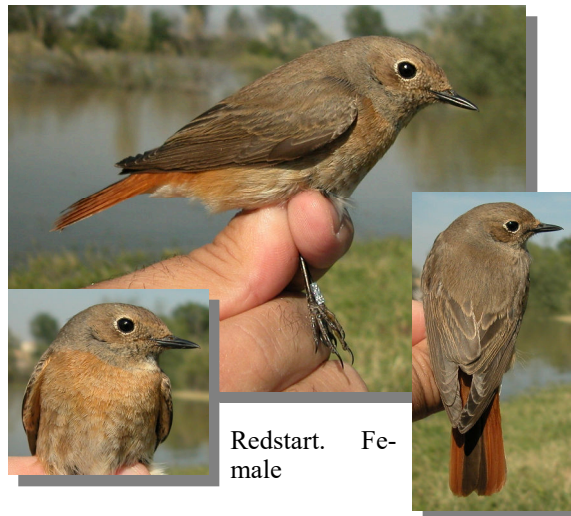
Nightingale



Black Redstart. Male: pattern of head.



Black Redstart. Female: pattern of breast, upperparts and tail.



Redstart. Female

SEXING

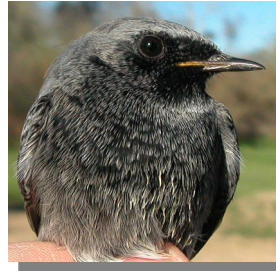
Adult male with grey-black body feathers, with a white patch on wings. **Adult female** with grey-brown body feathers, without a white patch on wings. **Juveniles** resembles a **female** and sexing is not possible using plumage pattern. **CAUTION:** after **postjuvenile** moult, many **1st year males** are similar to **females** so it is necessary to first determine the age for correct sexing (it is therefore not possible to sex **1st year autumn/2nd year spring female-like** birds).

331 Black Redstart

Put your logo here



Black Redstart. Summer. Sexing. Adult. Pattern of head: top male; bottom female.



Black Redstart. Autumn. Sexing. Adult. Pattern of breast: left male; right female.



Black Redstart. Summer. Sexing. Adult. Pattern of breast: left male; right female.



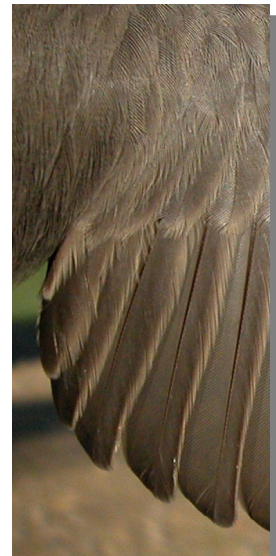
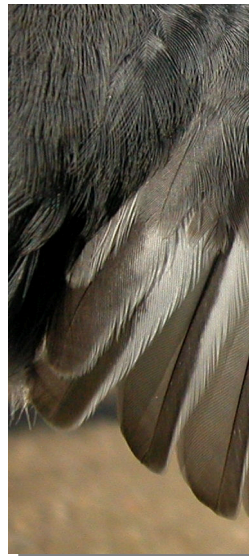
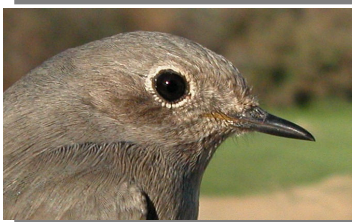
Black Redstart. Autumn. Sexing. Adult. Pattern of upperparts: left male; right female.



Black Redstart. Summer. Sexing. Adult. Pattern of upperparts: left male; right female.



Black Redstart. Autumn. Sexing. Adult. Pattern of head: top male; bottom female.



Black Redstart. Autumn. Sexing. Adult. Pattern of tertials: left male; right female.

331 Black Redstart

Put your logo here



Black Redstart. Autumn. Sexing. 1st year. Pattern of head: top male; bottom with undeterminable sex.



AGEING

3 age groups can be recognized:

Juvenile resembles a **female** but with fresh plumage.

1st year autumn/2nd year spring with contrast between moulted wing feathers, which are darker and greyer than brownish **juvenile** retained (check moult limits within greater coverts or between moulted median and retained greater coverts); tip of shaft on the outermost tail feather black in more than 9 mm, sometimes with a dark patch on the outer web.

Adult without moult limits on wing; tip of shaft on the outermost tail feather black in less than 8 mm, without a dark patch on the outer web.



Black Redstart. Autumn. Sexing. 1st year. Pattern of breast: left male; right with undeterminable sex.



Black Redstart. Ageing. Pattern of head: top adult female; bottom juvenile.



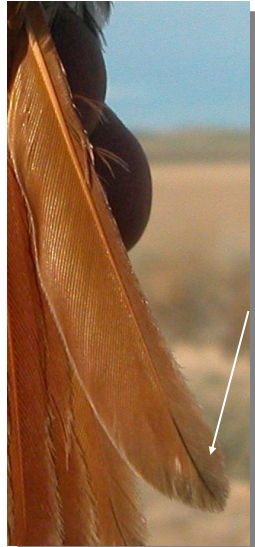
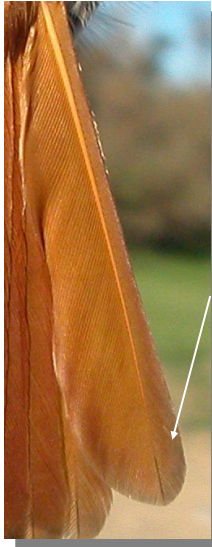
Black Redstart. Autumn. Sexing. 1st year. Pattern of upperparts: left male; right with undeterminable sex.



Black Redstart. Ageing. Wear of plumage: left adult female; right juvenile.

331 Black Redstart

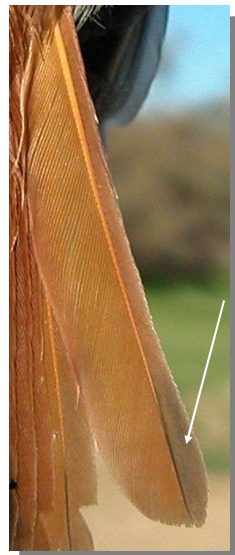
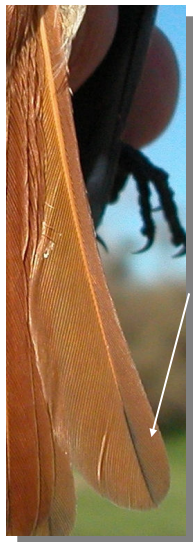
Put your logo here



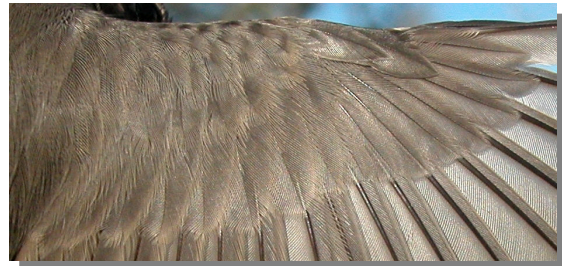
Black Redstart. Male. Ageing. Pattern of the outermost tail feather: left adult; right 1st year



Black Redstart. Male. Ageing. Moulting limit on greater coverts: top adult; bottom 1st year



Black Redstart. Ageing. Pattern of the outermost tail feather: left adult female; right 1st year with undetermined sex.



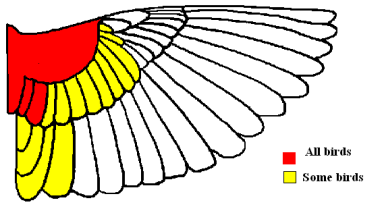
Black Redstart. Ageing. Moulting limit on greater coverts: top adult female; bottom 1st year with undetermined sex.

MOULT

Complete **postbreeding** moult, usually finished early October. Partial **postjuvenile** moult involving body feathers, lesser, median and none to all greater coverts (often 3 or 4); some birds extend their moult to some tertials and exceptionally inner secondaries; usually finished in October.

331 Black Redstart

Put your logo here



Black Redstart. Extent of postjuvenile moult.



PHENOLOGY

I	II	III	IV	V	VI	VII	VIII	IX	X	XI	XII

STATUS IN ARAGON

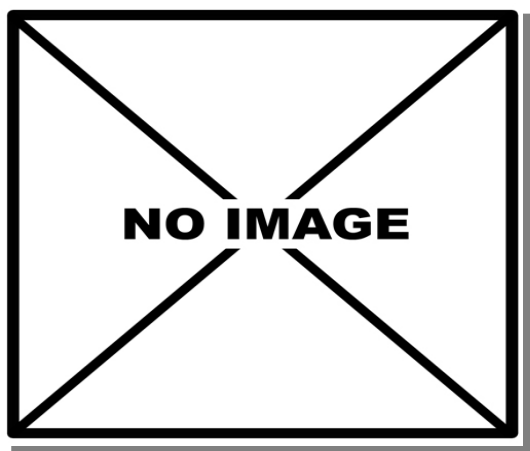
Resident, breeds widely distributed throughout the mountainous areas of the Region; wintering in the Ebro basin.

Black Redstart. Summer. 2nd year. Male/female (19-VI).



Black Redstart. Summer. Adult. Female (09-VII).

Black Redstart. Summer. Juvenile (09-VII).

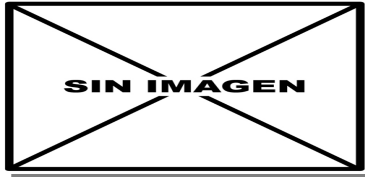


Black Redstart. Summer. Adult. Head pattern: top male (09-VII); bottom female (09-VII).

Black Redstart. Summer. 2nd year. Male ().

331 Black Redstart

Put your logo here



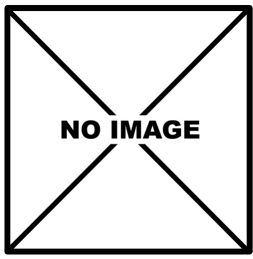
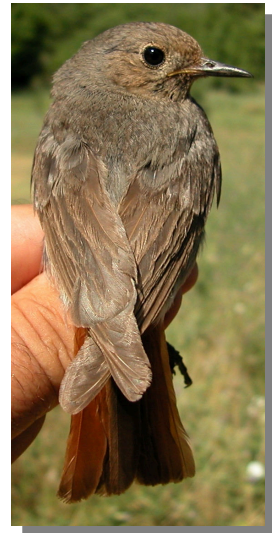
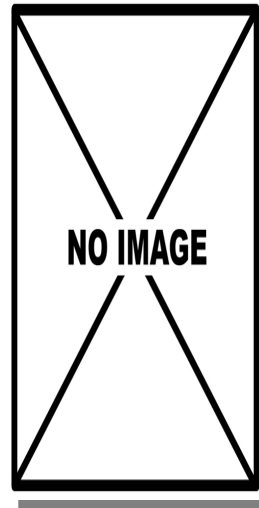
Black Redstart. Summer. Head pattern: top 2nd year male (); middle 2nd year male/female (19-VI); bottom juvenile (09-VII).



Black Redstart. Summer. Adult. Upperparts pattern: left male (09-VII); right female (09-VII).



Black Redstart. Summer. Adult. Breast pattern: left male (09-VII); right female (09-VII).



Black Redstart. Summer. Breast pattern: top left 2nd year male (); top right 2nd year male/female (19-VI); left juvenile (09-VII).



Black Redstart. Summer. Upperparts pattern: top left 2nd year male (); top right 2nd year male/female (19-VI); left juvenile (09-VII).

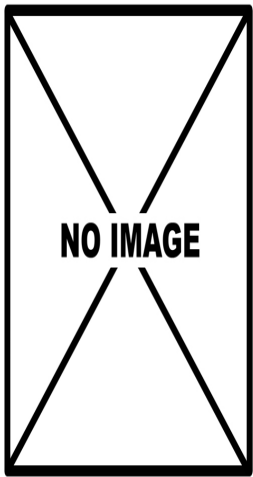
331 Black Redstart

Put your logo here



Black Redstart. Summer. Adult. Wear of tail and pattern of the outermost tail feather: left male (09-VII); right female (09-VII).

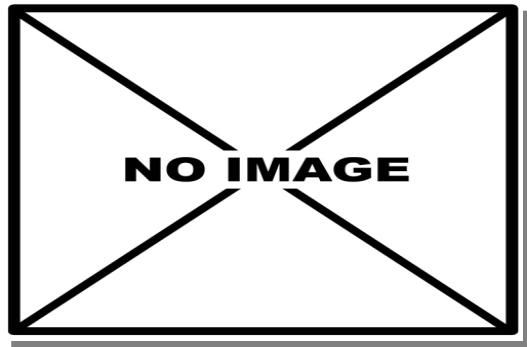
Black Redstart. Summer. Adult. Male: pattern of wing (09-VII).



Black Redstart. Summer. Adult. Female: pattern of wing (09-VII).



Black Redstart. Summer. Wear of tail and pattern of the outermost tail feather: top left 2nd year male (); top right 2nd year male/female (19-VI); left juvenile (09-VII).



Black Redstart. Summer. 2nd year. Male: pattern of wing ().

331 Black Redstart

Put your logo here



Black Redstart. Summer. 2nd year. Male/female: pattern of wing (19-VI).



Black Redstart. Winter. Adult. Female (18-XI).



Black Redstart. Summer. Juvenile: pattern of wing (16-VII).



Black Redstart. Winter. 1st year. Male (18-XI).



Black Redstart. Winter. Adult. Male (18-XI).



Black Redstart. Winter. Male/female. 1st year (18-XI).

331 Black Redstart

Put your logo here



Black Redstart. Winter. Adult. Head pattern: top male (18-XI); bottom female (18-XI).



Black Redstart. Winter. Adult. Upperparts pattern: left male (18-XI); right female (18-XI).



Black Redstart. Winter. 1st year. Head pattern: top male (18-XI); bottom male/female (18-XI).



Black Redstart. Winter. 1st year. Upperparts pattern: left male (18-XI); right male/female (18-XI).



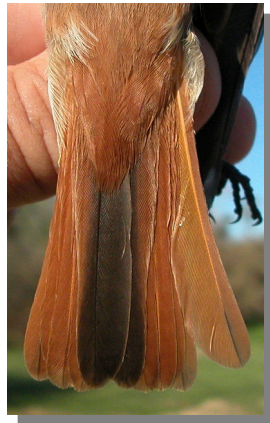
Black Redstart. Winter. Adult. Breast pattern: left male (18-XI); right female (18-XI).



Black Redstart. Winter. 1st year. Breast pattern: left male (18-XI); right male/female (18-XI).

331 Black Redstart

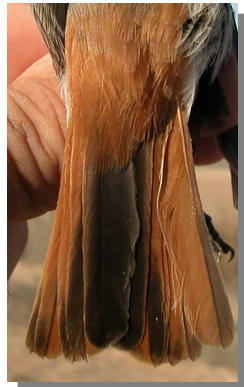
Put your logo here



Black Redstart. Winter. Adult. Pattern of the outermost tail feather: left male (18-XI); right female (18-XI).



Black Redstart. Winter. Adult. Female: pattern of wing (18-XI).



Black Redstart. Winter. 1st year. Pattern of the outermost tail feather: left male (18-XI); right male/female (18-XI).



Black Redstart. Winter. 1st year. Male: pattern of wing (18-XI).



Black Redstart. Winter. Adult. Male: pattern of wing (18-XI).



Black Redstart. Winter. 1st year. Male/female: pattern of wing (18-XI).