

327 European Robin

[Put your logo here](#)

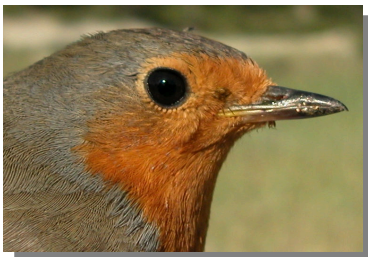


Robin. Spring. Adult (27-V).

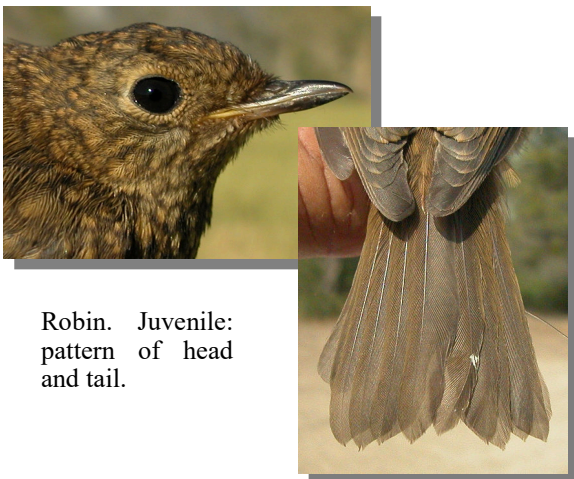
EUROPEAN ROBIN (*Erithacus rubecula*)

IDENTIFICATION

13-14 cm. **Adult** with red-orange breast, throat and forehead; whitish underparts and chestnut upperparts. **Juvenile** with brown plumage spotted buff on upper and underparts, lacking reddish breast.



Robin. Adult: pattern of head.



Robin. Juvenile: pattern of head and tail.

SIMILAR SPECIES

Adult is unmistakable. **Juvenile** recalls a juvenile **Nightingale**, which has a reddish tail.



Nightingale. Juvenile.

SEXING

Plumage of both sexes alike.

AGEING

3 age groups can be recognized:

Juvenile with spotted plumage and lacking red breast.

1st year autumn/2nd year spring with moult limit between outer retained **juvenile** greater coverts, with brownish edge and usually large pale spot, and inner moulted ones, with olive edge and often without pale spots; pointed tail feathers; until winter inside of upper mandible yellow or yellowish grey.

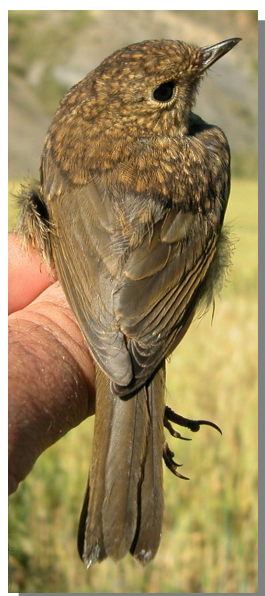
Adult without moult limit on wings; rounded tail feathers; inside of upper mandible dark; usually greater coverts without spots, with olive edges. **CAUTION:** some **adult** birds have pale spots on greater coverts, which are smaller and rounded than in **juveniles**.

327 European Robin

Put your logo here



Robin. Ageing. Pattern of breast: left adult; right juvenile.



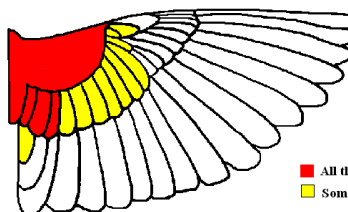
Robin. Ageing. Pattern of upperparts: left adult; right juvenile.



Robin. Ageing. Molt limit on greater coverts: top adult; bottom 1st year.

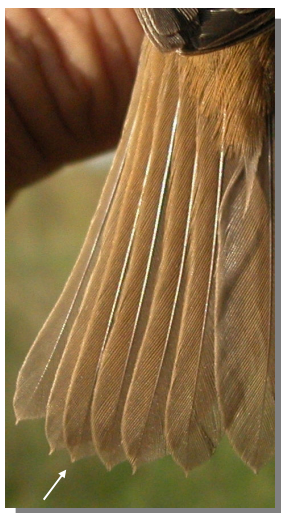
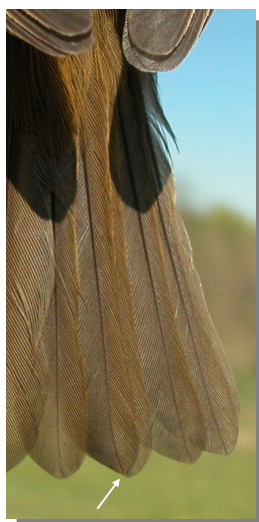
MOULT

Complete **postbreeding** moult, usually finished late September. Partial **postjuvenile** moult involving body feathers, lesser and median coverts and inner greater coverts; some specimens extend their moult to all greater coverts and some tertials; finish their moult between August and September.



Robin. Extent of postjuvenile moult.

■ All the specimens
■ Some specimens



Robin. Ageing. Pattern of tips of tail feathers: left adult; right 1st year.

PHENOLOGY

I	II	III	IV	V	VI	VII	VIII	IX	X	XI	XII

STATUS IN ARAGON

Resident. Widely distributed throughout the Region, absent only from the most deforested areas of the Ebro Basin.

327 European Robin

Put your logo here



Robin. Spring. 2nd year (27-V).



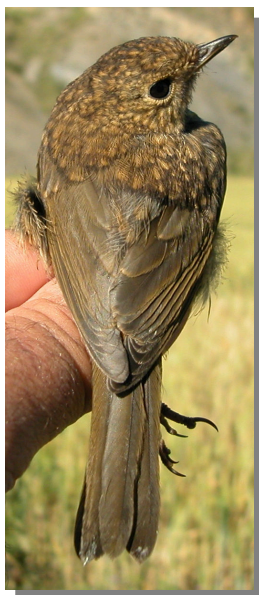
Robin. Spring. Breast pattern: top left adult (27-V); top right 2nd year (27-V); left juvenile (13-VII).



Robin. Spring. Juvenile (13-VII).



Robin. Spring. Head pattern: top adult (27-V); middle 2nd year (27-V); bottom juvenile (13-VII).



Robin. Spring. Up-part pattern: top left adult (27-V); top right 2nd year (27-V); left juvenile (13-VII).

327 European Robin

[Put your logo here](#)



Robin. Spring. Tail pattern: top left adult (27-V); top right 2nd year (27-V); left juvenile (13-VII).



Robin. Spring. Juvenile: pattern of wing (13-VII).



Robin. Autumn. Adult (14-X).



Robin. Spring. Adult: pattern of wing (27-V).



Robin. Autumn. 1st year (01-X).



Robin. Spring. Adult: pattern of wing (27-V).

327 European Robin

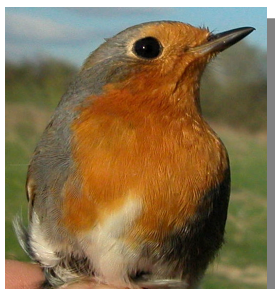
[Put your logo here](#)



Robin. Autumn. Head pattern: top adult (14-X); bottom 1st year (02-X).



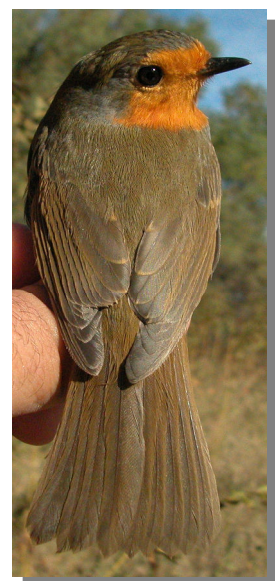
Robin. Autumn. Tail pattern: left adult (14-X); right 1st year (02-X).



Robin. Autumn. Breast pattern: left adult (14-X); right 1st year (02-X).



Robin. Autumn. Adult: pattern of wing without spots on greater coverts (14-X).



Robin. Autumn. Upperpart pattern: left adult (14-X); right 1st year (02-X).



Robin. Autumn. Adult: pattern of wing with pale spots on greater coverts (10-XI).

327 European Robin

[Put your logo here](#)



Robin. Autumn. 1st year: pattern of wing without spots on moulted feathers (29-IX).



Robin. Autumn. 1st year: pattern of wing with spots on moulted feathers (01-XI).