



Robin. Spring. Adult (27-V).

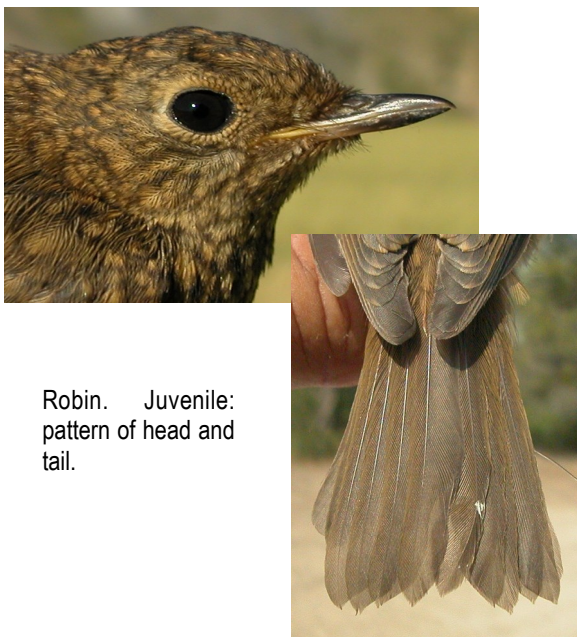
### EUROPEAN ROBIN (*Erithacus rubecula*)

#### IDENTIFICATION

13-14 cm. **Adult** with red-orange breast, throat and forehead; whitish underparts and chestnut upperparts. **Juvenile** with brown plumage spotted buff on upper and underparts, lacking reddish breast.



Robin. Adult: pattern of head.



Robin. Juvenile: pattern of head and tail.

#### SIMILAR SPECIES

**Adult** is unmistakable. **Juvenile** recalls a juvenile **Nightingale**, which has a reddish tail.



Nightingale. Juvenile.

#### SEXING

Plumage of both sexes alike.

#### AGEING

3 age groups can be recognized:

**Juvenile** with spotted plumage and lacking red breast.

**1st year autumn/2nd year spring** with moult limit between outer retained **juvenile** greater coverts, with brownish edge and usually large pale spot, and inner moulted ones, with olive edge and often without pale spots; pointed tail feathers; until winter inside of upper mandible yellow or yellowish grey.

**Adult** without moult limit on wings; rounded tail feathers; inside of upper mandible dark; usually greater coverts without spots, with olive edges. **CAUTION:** some **adult** birds have pale spots on greater coverts, which are smaller and rounded than in **juveniles**.

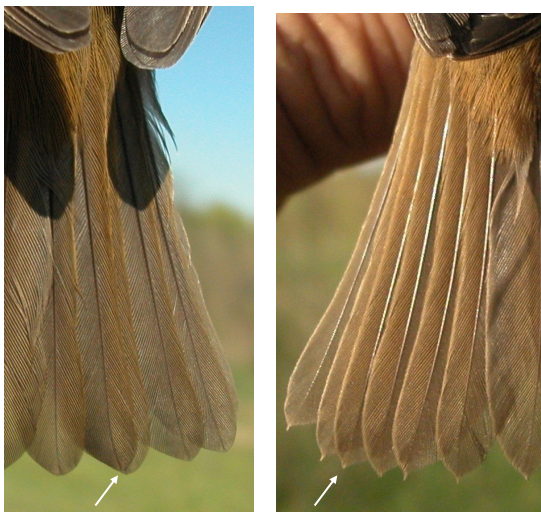
**10990 European Robin** (*Erithacus rubecula*)



Robin. Ageing. Pattern of breast: left adult; right juvenile.



Robin. Ageing. Pattern of upperparts: left adult; right juvenile.



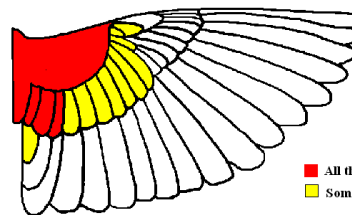
Robin. Ageing. Pattern of tips of tail feathers: left adult; right 1st year.



Robin. Ageing. Molt limit on greater coverts: top adult; bottom 1st year.

**MOULT**

Complete **postbreeding** moult, usually finished late September. Partial **postjuvenile** moult involving body feathers, lesser and median coverts and inner greater coverts; some specimens extend their moult to all greater coverts and some tertials; finish their moult between August and September.



Robin. Extent of postjuvenile moult.

■ All the specimens  
■ Some specimens

**PHENOLOGY**

I	II	III	IV	V	VI	VII	VIII	IX	X	XI	XII

■ Summer visitor    ■ Resident  
■ Wintering        ■ On passage

**10990** European Robin (*Erithacus rubecula*)



Robin. Spring. 2nd year (27-V).



Robin. Spring. Juvenile (13-VII).



Robin. Spring. Head pattern: top adult (27-V); middle 2nd year (27-V); bottom juvenile (13-VII).



Robin. Spring. Breast pattern: top left adult (27-V); top right 2nd year (27-V); left juvenile (13-VII).



Robin. Spring. Upper part pattern: top left adult (27-V); top right 2nd year (27-V); left juvenile (13-VII).



Robin. Spring. Tail pattern: top left adult (27-V); top right 2nd year (27-V); left juvenile (13-VII).



Robin. Spring. Adult: pattern of wing (27-V).



Robin. Spring. Adult: pattern of wing (27-V).



Robin. Spring. Juvenile: pattern of wing (13-VII).



Robin. Autumn. Adult (14-X).



Robin. Autumn. 1st year (01-X).

# 10990 European Robin (*Erithacus rubecula*)



Robin. Autumn. Head pattern: top adult (14-X); bottom 1st year (02-X).



Robin. Autumn. Breast pattern: left adult (14-X); right 1st year (02-X).



Robin. Autumn. Upperpart pattern: left adult (14-X); right 1st year (02-X).



Robin. Autumn. Tail pattern: left adult (14-X); right 1st year (02-X).



Robin. Autumn. Adult: pattern of wing without spots on greater coverts (14-X).



Robin. Autumn. Adult: pattern of wing with pale spots on greater coverts (10-XI).



Robin. Autumn. 1st year: pattern of wing without spots on moulted feathers (29-IX).



Robin. Autumn. 1st year: pattern of wing with spots on moulted feathers (01-XI).