

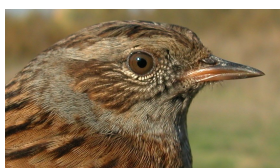
10840 Dunnock (*Prunella modularis*)



Dunnock. Adult (06-I).

IDENTIFICATION

13-15 cm. Grey head, neck and breast; brown and streaked upperparts; pale underparts.



Dunnock. Pattern of head, breast and upperparts.



SIMILAR SPECIES

Recalls an **Alpine Accentor**, with barred throat and chestnut flanks.



Alpine Accentor.

SEXING

Male usually with head and breast more lead-grey than **female**, but it is not an useful characteristic for sexing due to overlap.

AGEING

3 types of age can be recognized:

Juvenile with fresh plumage; head and breast streaked; greyish iris.

1st year autumn/2nd year spring with unmoulted **juvenile** greater coverts with pale marks on tips of both webs and distinct black central tip; if there are moulted inner greater coverts, then with indistinct pale marks shading into black central tip; unmoulted alula feathers dull; bill with base of the lower mandible paler; pointed tail feathers; dull brown iris (**CAUTION:** some **juvenile** birds have reddish tinge on iris in early October).

Adult without moult limit on wings; outer greater coverts with pale marks on the tips, while the inner ones do not have pale marks or are small; alula feathers dark; reddish iris; dark bill; rounded tail feathers.

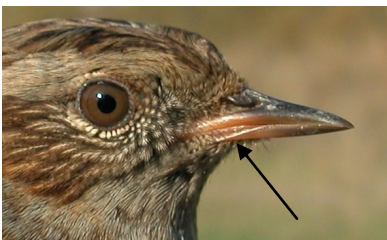
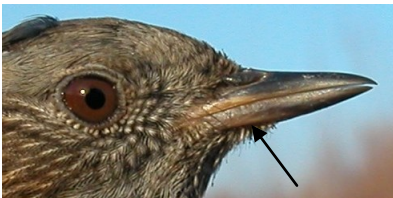
10840 **Dunnock** (*Prunella modularis*)



D u n n o c k .
Ageing. Pattern of head: top adult; bottom juvenile.



Dunnock. Ageing. Pattern of breast: left adult; right juvenile.



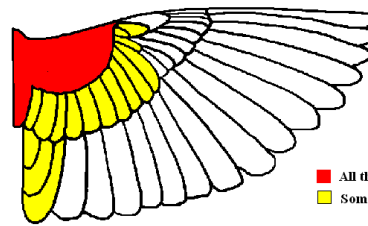
D u n n o c k .
Ageing. Colour of iris and bill: top adult; middle 1st year; bottom juvenile.



Dunnock. Ageing. Pattern of tips of tail feathers: left adult; right 1st year.

MOULT

Complete **postbreeding** moult, usually finished early October. Partial **postjuvenile** moult including body feathers and lesser and median wing coverts, but some birds may extending their moult to a variable number of greater coverts, tertials and tail feathers; usually finished late September.



Dunnock. Extent of postjuvenile moult.

■ All the specimens
■ Some specimens

PHENOLOGY

I	II	III	IV	V	VI	VII	VIII	IX	X	XI	XII

■ Estival
■ Invernante

■ Residente
■ En paso

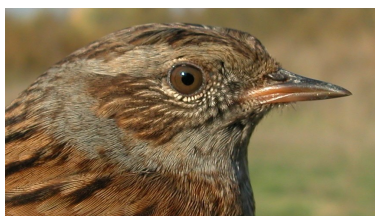
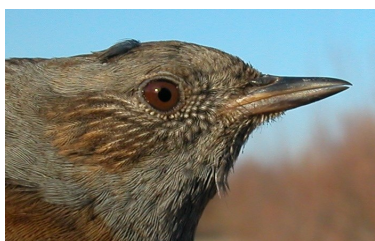
10840 **Dunnock** (*Prunella modularis*)



Dunnock. 1st year (02-XII).



Dunnock. Juvenile (18-VII).



Dunnock. Head pattern and iris colour: top adult (06-I); middle 1st year (02-XII); bottom juvenile (18-VII).

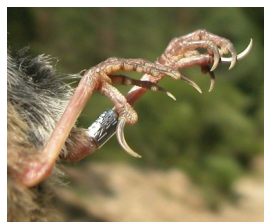


Dunnock. Breast pattern: top left adult (01-XI); top right 1st year (02-XII); left juvenile (18-VII).

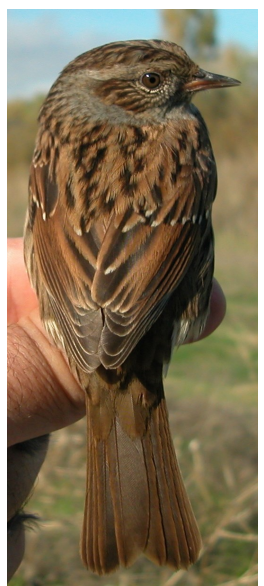


Dunnock. Tail pattern: top left adult (06-I); top right 1st year with fresh tail (02-XII); left 1st year with worn tail (02-XII); bottom juvenile (18-VII).

10840 **Dunnock** (*Prunella modularis*)



Dunnock. Legs pattern: left adult (06-XII); right juvenile (18-VII).



Dunnock. Upperpart pattern: top left adult (06-I); top right 1st year (02-XII); left juvenile (18-VII).



Dunnock. Adult: pattern of alula (06-XII).



Dunnock. 1st year: pattern of alula (02-XII).



Dunnock. Juvenile: pattern of alula (18-VII).



Dunnock. Adult: pattern of wing (06-XII).



Dunnock. 1st year: pattern of wing (02-XII).



Dunnock. Juvenile: pattern of wing (18-VII).