

10050 Tawny Pipit (*Anthus campestris*)



Tawny Pipit. Spring. Adult (08-V).

TAWNY PIPIT (*Anthus campestris*)

IDENTIFICATION

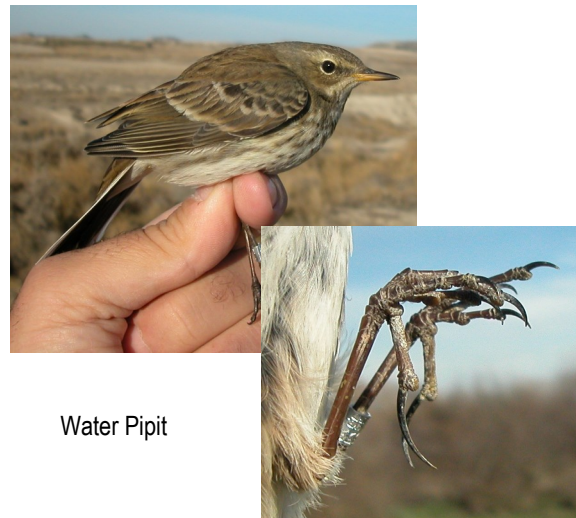
16-18 cm. Upperparts pale brown with some streaks on head and mantle; chestnut breast, with diffuse streaks; white underparts; pale legs; hindclaw short; outermost tail feathers with whitish patches.



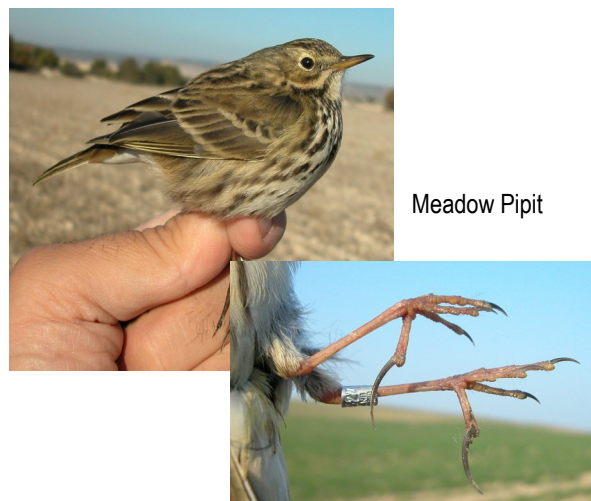
Tawny Pipit. Pattern of head, tail, flank and legs.

SIMILAR SPECIES

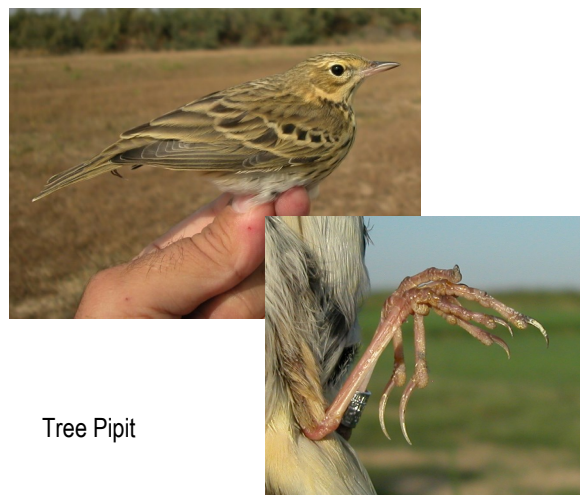
Water Pipit has dark legs; among **Pipits** with pale legs, **Tree Pipit** has a short hindclaw and breast and flanks streaked; **Meadow Pipit** has a very long hindclaw and breast and flanks strongly streaked.



Water Pipit



Meadow Pipit



Tree Pipit

SEXING

Plumage of both sexes alike.

10050 Tawny Pipit (*Anthus campestris*)

AGEING

4 types of age can be recognized:

Juvenile with breast intensely spotted; feathers with pale edges on upperparts; fresh plumage.

1st year autumn usually with some retained **juvenile** body feathers; with moult limit between unmoulted **juvenile** wing coverts, with narrow pale edge, and moulted ones, with large buff edge (contrast within median, greater coverts or tertials); always with one age of flight feathers, which will be somewhat worn.

2nd year often with flight feathers very worn; alula and inner primary coverts worn, pointed and with distinct terminal pale fringe; sometimes with some **juvenile** greater covert or tail feather retained. **CAUTION:** alula and primary coverts appearance sometimes very similar to that of the **adult**.

Adult in **autumn** with moult limit (if a complete moult is not made) between new fresh and old retained flight feathers, that will be much more worn than those of the **1st year** birds; in **spring** with alula and inner primary coverts rounded and with diffuse pale (usually buff) terminal fringe.

CAUTION: after **prebreeding** moult ageing is more difficult since both types of age have several generations of feathers.



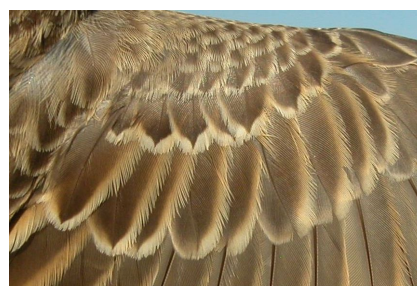
Tawny Pipit. Spring. Ageing. Pattern of breast: left adult; right juvenile.



Tawny Pipit. Spring. Ageing. Pattern of alula and primary coverts: top adult; bottom 2nd year.



Tawny Pipit. Spring. Ageing. Pattern of upperparts and wear of flight feathers: left adult; right juvenile.

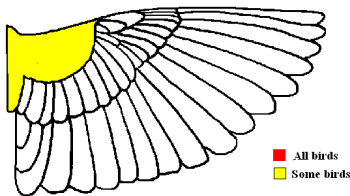


Tawny Pipit. Autumn. Ageing. Pattern of wing coverts: top adult; bottom 1st year.

10050 Tawny Pipit (*Anthus campestris*)

MOULT

Complete **postbreeding** moult but very variable, since birds which finish their moult in their breeding areas to those that change only some body feathers, with all the intermediate cases, to finish the moult in wintering quarters. Partial **postjuvenile** moult including body feathers (often some retained) and some wing coverts (mainly lesser, median and inner greater coverts), some tertials and sometimes central tail feathers; some birds do not change any wing feather in breeding areas. Both types of age have a **prebreeding** moult changing body feathers and a variable number of wing coverts, tertials and tail feathers.



Tawny Pipit. Extent of postjuvenile moult.

PHENOLOGY

I	II	III	IV	V	VI	VII	VIII	IX	X	XI	XII

- Summer visitor
- Wintering
- Resident
- On passage



Tawny Pipit. Spring. 2nd year (07-V).



Tawny Pipit. Spring. Juvenile (15-VII).



Tawny Pipit. Spring. Head pattern: top adult (08-V); middle 2nd year (07-V); bottom juvenile (15-VII).



Tawny Pipit. Spring. Breast pattern: top left adult (08-V); top right 2nd year (07-V); left juvenile (15-VII).

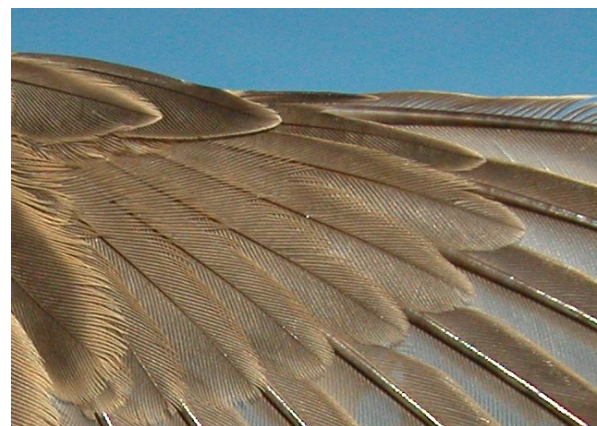
10050 Tawny Pipit (*Anthus campestris*)



Tawny Pipit. Spring. Pattern of upperparts: top left adult (08-V); top right 2nd year (07-V); left juvenile (15-VII).



Tawny Pipit. Spring. Tail pattern: top left adult (08-V); top right 2nd year (07-V); left juvenile (15-VII).



Tawny Pipit. Spring. Adult: pattern of primary coverts (08-V).

10050 Tawny Pipit (*Anthus campestris*)



Tawny Pipit. Spring. 2nd year: pattern of primary covers (07-V).



Tawny Pipit. Spring. Juvenile: pattern of primary covers (15-VII).



Tawny Pipit. Spring. Adult: pattern of wing (08-V).



Tawny Pipit. Spring. 2nd year: pattern of wing (07-V).



Tawny Pipit. Spring. Juvenile: pattern of wing (15-VII).



Tawny Pipit. Autumn. Adult (27-VIII).



Tawny Pipit. Autumn. 1st year (27-VIII).

10050 Tawny Pipit (*Anthus campestris*)



Tawny Pipit. Autumn. Head pattern: top adult (27-VIII); bottom 1st year (27-VIII).



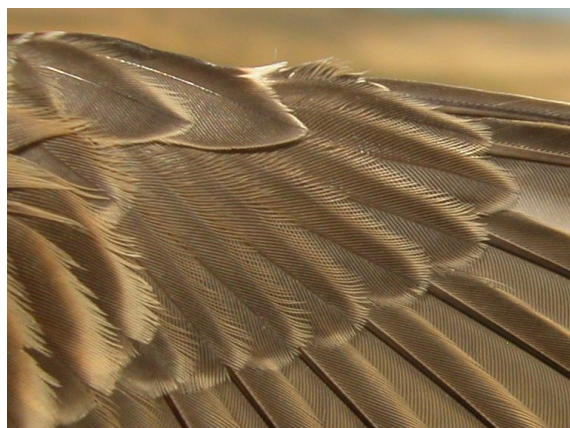
Tawny Pipit. Autumn. Head pattern: left adult (27-VIII); right 1st year (27-VIII).



Tawny Pipit. Autumn. Pattern of upperparts: left adult (27-VIII); right 1st year (27-VIII).



Tawny Pipit. Autumn. Tail pattern: left adult (27-VIII); right 1st year (27-VIII).



Tawny Pipit. Autumn. Adult: pattern of primary coverts (27-VIII).



Tawny Pipit. Autumn. 1st year: pattern of primary coverts (27-VIII).

10050 Tawny Pipit (*Anthus campestris*)



Tawny Pipit. Autumn. Adult with complete moult: pattern of wing (27-VIII).



Tawny Pipit. Autumn. Adult in active moult: pattern of wing (12-VII).



Tawny Pipit. Autumn. 1st year: pattern of wing (27-VIII).