

305 Sand Martin

Put your logo here



Sand Martin. Spring (09-IV).

SAND MARTIN (*Riparia riparia*)**IDENTIFICATION**

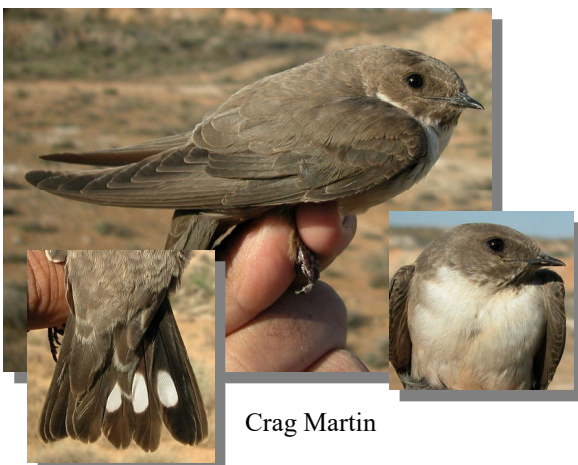
12-13 cm. Grey brown upperparts; white underparts; with a grey brown breast band; tail short and forked.



Sand Martin. Pattern of breast and tail.

**SIMILAR SPECIES**

Recalls a **Crag Martin**, which has white patches on tail feathers and lacks the brown breast band.



Crag Martin

SEXING

Plumage of both sexes alike.

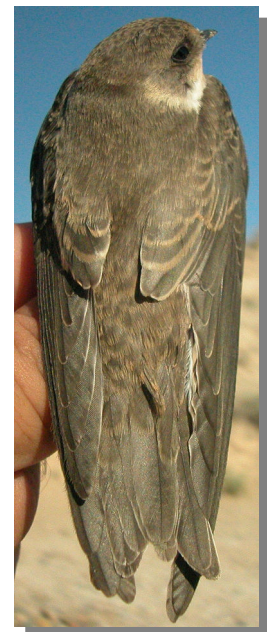
AGEING

2 age groups can be recognized:

Juvenile with head, upperparts, wing coverts and tertials tipped rufous-buff; fresh flight and tail feathers. **CAUTION:** due to wear in some birds is difficult to find **juvenile** rufous-buff tips on feathers since late September.

Adult: feathers uniform brown, without rufous tips on body or wing; worn feathers in **summer**.

In **spring**, after **postbreeding/postjuvenile** moults, ageing is not possible using plumage pattern. Some retained feathers can rarely be found until early summer, but feather generation unknown.



Sand Martin. Ageing. Pattern of upperparts: left adult; right juvenile.



Sand Martin. Ageing. Pattern of tertials: left adult; right juvenile.

305 Sand Martin

Put your logo here

MOULT

Complete **postbreeding** and **postjuvenile** moults, which can start in breeding places and finish in wintering quarters or start in winter.

PHENOLOGY

I	II	III	IV	V	VI	VII	VIII	IX	X	XI	XII

STATUS IN ARAGON

Summer visitor, breeds colonially in banks in the Ebro and some rivers from the Pyrenees.



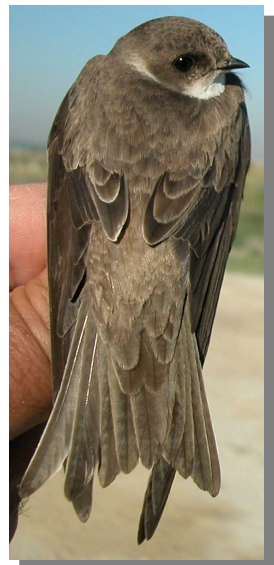
Sand Martin. Summer. Adult (31-VII)



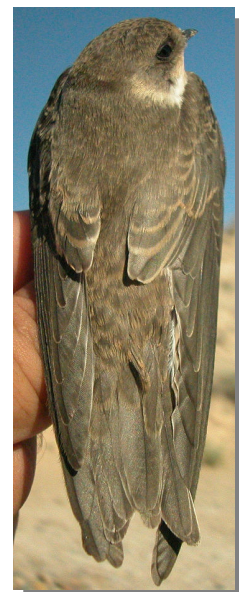
Sand Martin. Summer. Juvenile (22-VII).



Sand Martin. Head pattern: top left in spring (09-IV); top right adult in summer (31-VII); left juvenile (07-VII).



Sand Martin. Spring. Upperpart pattern: left with complete moult (09-IV); right with retained tertials (V) (Photo: Hansjörg Lauermann)



Sand Martin. Upperpart pattern: left adult in summer (31-VII); right juvenile (22-VII).

305 Sand Martin

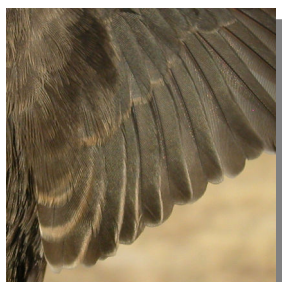
[Put your logo here](#)



Sand Martin. Breast pattern: top left in spring (09-IV); top right adult in summer (31-VII); left juvenile (07-VII).



Sand Martin. Rump pattern and tail wear: top left in spring (09-IV); top right adult in summer (31-VII); left juvenile (07-VII).



Sand Martin. Summer. Pattern of tertials: left adult (31-VII); right juvenile (07-VII).



Sand Martin. Spring: pattern of wing (09-IV).



Sand Martin. Summer. Adult: pattern of wing (31-VII).



Sand Martin. Summer. Juvenile: pattern of wing (07-VII).