

299 Crested Lark

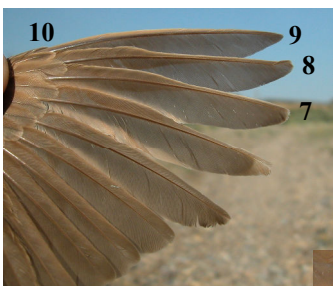
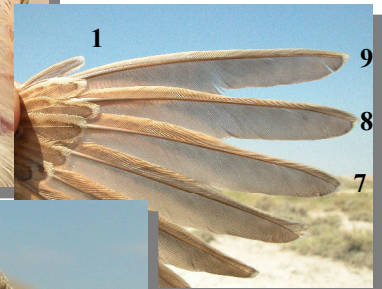
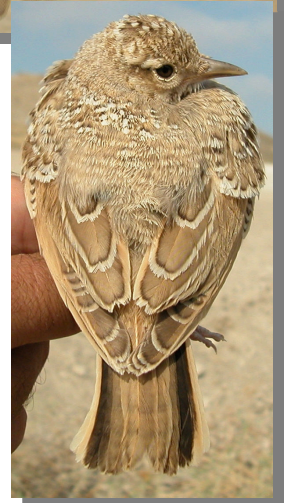
Put your logo here



Crested Lark. Adult (19-V).

CRESTED LARK (*Galerida cristata*)**IDENTIFICATION**

16-19 cm. Brown plumage; rusty outer tail feathers; head with crest and supercilium; tip of lower mandible straight; breast diffused streaked; grey uppertail coverts without contrast with rump; rusty tinged underwing coverts; 10th primary is always shorter than primary coverts; primaries 7th, 8th and 9th are the longest. **Juveniles** have white edges on feathers.



Crested Lark. Juvenile: pattern of wing, breast, upperparts, underwing coverts, wing formula and head and bill.

Crested Lark. Adult: pattern of head and bill, tail coverts, breast, wing formula and underwing coverts.



299 Crested Lark

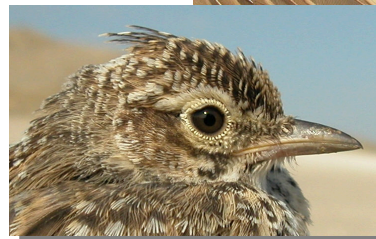
Put your logo here

SIMILAR SPECIES

Among larks with crest, **Skylark** has white outer tail feathers. **Thekla Lark** is very similar but has rust tinged uppertail coverts; grey underwing coverts; breast with distinct streaked; 10th primary can be, but not always, longer than primary coverts; bill is shorter and convex near the tip. **Juveniles** of both species are difficult to determine being useful characters bill pattern, wing formula and darker plumage of **Thekla Lark**.



Thekla Lark. Adult.



Thekla Lark. Juvenile.

299 Crested Lark

Put your logo here



Skylark

SEXING

Plumage of both sexes alike. Size can be helpful in extreme birds: **male** with wing longer than 106 mm; **female** with wing shorter than 104 mm.

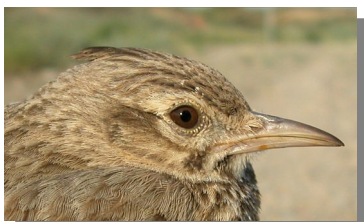
AGEING

2 age groups can be recognized:

Juvenile with distinct pale edges on wing coverts; short crest; fresh plumage.

Adult without prominent pale edges on wing coverts; long crest; worn plumage in **spring**.

After **postbreeding/postjuvenile** moults ageing is not possible using plumage pattern.



Crested Lark. Ageing. Pattern of head: top adult; bottom juvenile.



Crested Lark. Ageing. Pattern of upperparts: left adult; right juvenile.



Crested Lark. Ageing. Pattern of wing coverts: top adult; bottom juvenile.

MOULT

Complete **postbreeding** and **postjuvenile** moults, usually finished in October.

PHENOLOGY

I	II	III	IV	V	VI	VII	VIII	IX	X	XI	XII

STATUS IN ARAGON

Resident. Widely distributed throughout the Region, absent from the highest areas of the Pyrenees and Sistema Iberico.

299 Crested Lark

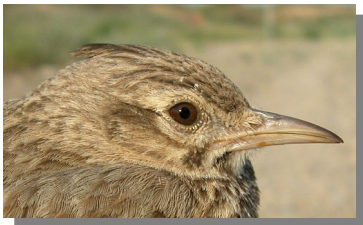
Put your logo here



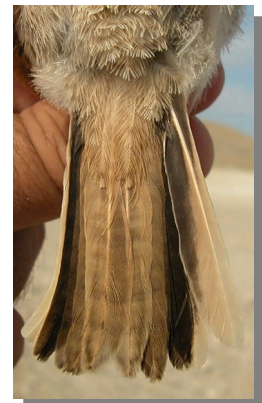
Crested Lark. Juvenile. (08-VII).



Crested Lark. Upperpart pattern: left adult (19-V); right juvenile (08-VII)



Crested Lark. Pattern of head and bill: top adult (19-V); bottom juvenile (08-VII)



Crested Lark. Tail pattern: left adult (11-VI); right juvenile (19-V)



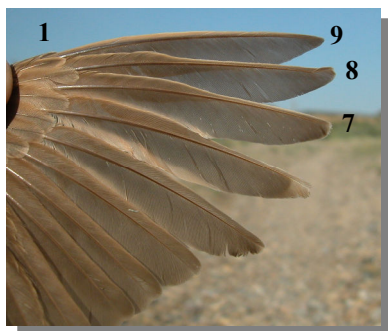
Crested Lark. Breast pattern: top adult (19-V); bottom juvenile (08-VII)



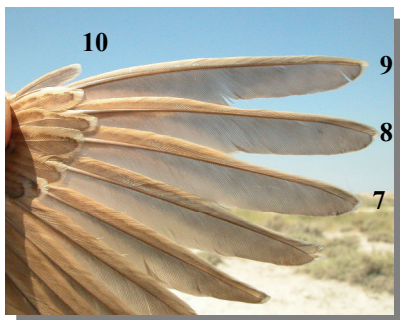
Crested Lark. Legs pattern: left adult (11-VI); right juvenile (19-V)

299 Crested Lark

[Put your logo here](#)



Crested
Lark. Wing
formula:
top adult
(19-V);
bottom ju-
venile (23-
VII)



Crested Lark. Adult: pattern of wing (19-V).



Crested Lark. Juvenile: pattern of wing (10-VII)