

# 295 Dupont's Lark

Put your logo here



Dupont's Lark. Autumn (24-IX).

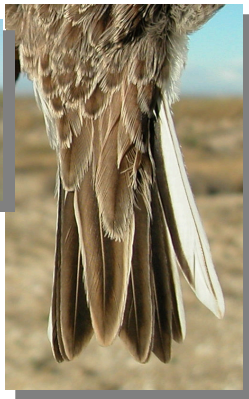
## DUPONT'S LARK (*Chersophilus duponti*)

### IDENTIFICATION

18-19 cm. Brown upperparts; white underparts, with streaked brown breast; white outermost tail feathers; lacks crest on head; with marked supercilium; bill thin, long and curved. **Juveniles** with feathers on body and wing edged whitish.

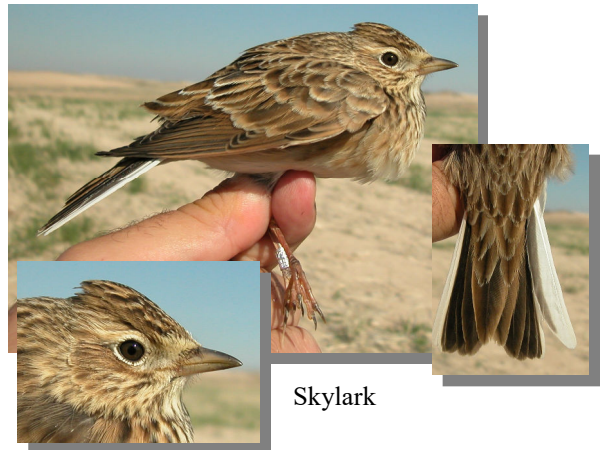


Dupont's Lark. Pattern of head, bill and tail.



### SIMILAR SPECIES

**Skylark** has brown plumage and white outer tail feathers, but its bill is shorter.



Skylark

### SEXING

Plumage of both sexes alike. Size can be helpful in extreme birds: **male** with wing longer than 98 mm; **female** with wing shorter than 96 mm.

### AGEING

2 age groups can be recognized:

**Juvenile** with prominent pale edges on wing coverts; fresh plumage.

**Adult** with narrow edges on wing coverts (usually early missing by wear); worn plumage in **spring**.

After **postbreeding/postjuvenile** moults ageing is not possible using plumage pattern.



Dupont's Lark. Ageing. Pattern of head: top adult; bottom juvenile.



Dupont's Lark. Ageing. Pattern of breast: left adult; right juvenile.

295 Dupont's Lark

Put your logo here



Dupont's Lark. Ageing. Pattern of upperparts: left adult; right juvenile.

MOULT

Complete **postbreeding** and **postjuvenile** moults, usually finished late September.

PHENOLOGY

I	II	III	IV	V	VI	VII	VIII	IX	X	XI	XII

STATUS IN ARAGON

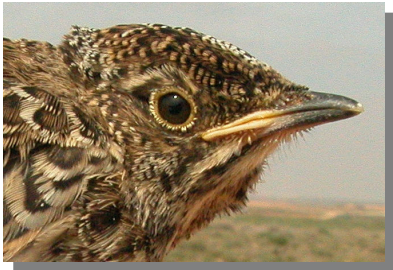
Resident. Breeds in dry areas from the Ebro Basin and Sistema Iberico.



Dupont's Lark. Spring. Adult (02-IV).



Dupont's Lark. Spring. Juvenile (04-VII).



Dupont's Lark. Pattern of head and bill. From top to bottom: in autumn (24-IX); adult in spring (02-IV); juvenile (04-VII); young (09-IV).



# 295 Dupont's Lark

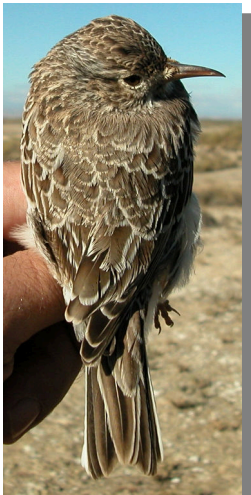
Put your logo here



Dupont's Lark. Breast pattern: top left in autumn (24-IX); top right adult in spring (02-IV); left juvenile (04-VII).



Dupont's Lark. Tail pattern: top left in autumn (24-IX); top right adult in spring (02-IV); left juvenile (04-VII).



Dupont's Lark. Upperparts pattern: top left in autumn (24-IX); top right adult in spring (02-IV); left juvenile (04-VII).



Dupont's Lark. Autumn: pattern of wing (24-IX).



Dupont's Lark. Spring. Adult: pattern of wing (02-IV).

## 295 Dupont's Lark

Put your logo here



Dupont's Lark. Spring. Juvenile: pattern of wing (04-VII).