

08630 Black Woodpecker (*Dryocopus martius*)



Black Woodpecker. Adult. Male (IV) (photo: Ondrej Kauzál).

BLACK WOODPECKER (*Dryocopus martius*)

IDENTIFICATION

45-48 cm. Black plumage with red crown; white bill.

SIMILAR SPECIES

This species is unmistakable

SEXING

Juveniles and **adults** can be sexed by size of the red patch on crown: **male** with red on whole crown; **female** with red only on hindcrown.



Black Woodpecker. Sexing. Pattern of crown: top male (photo: Lukács Katalin Odett); bottom female (photo: On-

AGEING

3 types of age can be recognized:

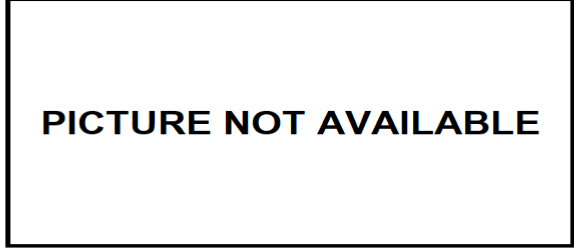
Juvenile similar to **adults**, but with duller black plumage and red on crown no so bright; 10th primary with broad tip and with straight or convex edge on the inner web; 10th primary with 16 to 28 mm longer than the primary coverts.

1st year autumn/2nd year spring with moult limit between the moulted and **juvenile** retained wing feathers.

Adult with bright bluish black plumage; without moult limits; 10th primary with narrow tip and with concave edge on the inner web; 10th primary with 3 to 17 mm longer than the primary coverts.



Black Woodpecker. Ageing. Pattern and length of the 10th primary: top adult (photo: Pere Josa); bottom juvenile (photo: Vincent van der Spek).



Black Woodpecker. Ageing. Pattern of the wing coverts: top adult; bottom juvenile.

08630 Black Woodpecker (*Dryocopus martius*)

MOULT

Complete **postbreeding** moult, finished in October. Partial **postjuvenile** moult including body feathers, primaries, lesser and median coverts and tail, so greater coverts, inner primary coverts (sometimes outer ones are moulted) and secondaries remain unmoulted; usually finished early November.

PHENOLOGY

I	II	III	IV	V	VI	VII	VIII	IX	X	XI	XII

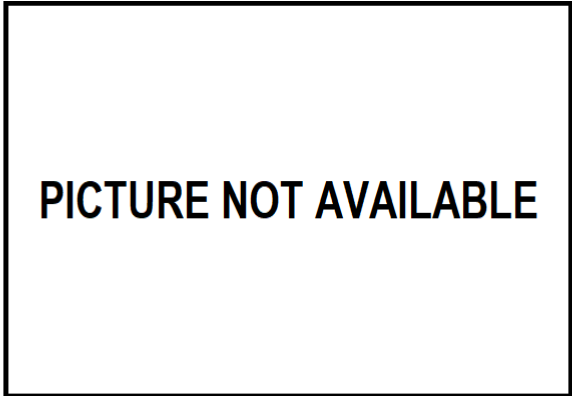
- Summer visitor
- Wintering
- Resident
- On passage



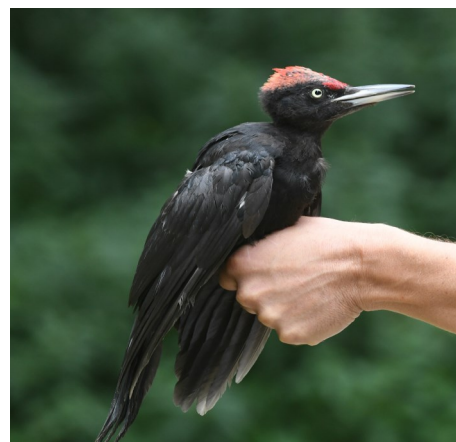
Black Woodpecker. Adult. Female (IV) (photo: Ondrej Kauzál).



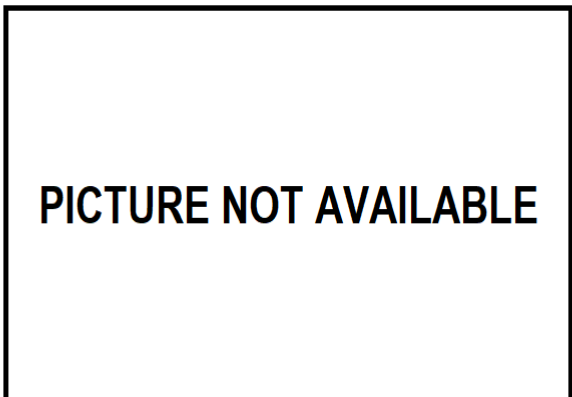
Black Woodpecker. 2nd year. Male () (19-III) (photo: Lukács Katalin Odett).



Black Woodpecker. 2nd year. Female ().



Black Woodpecker. Juvenile. Male 16-VIII (photo: José Manuel Carregal Silva).



Black Woodpecker. Juvenile. Female ().

08630 Black Woodpecker (*Dryocopus martius*)



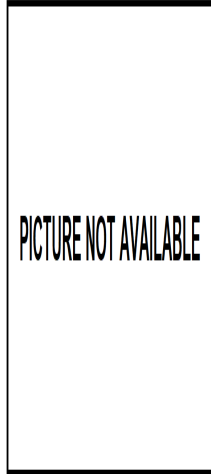
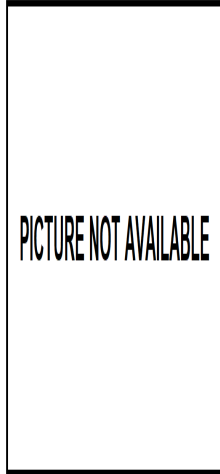
Black Woodpecker. Adult. Head pattern: top male (); bottom female (IV) (photo: Ondrej Kauzál).



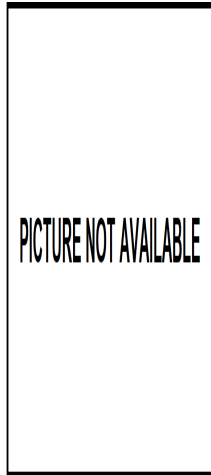
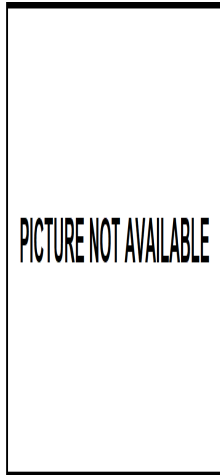
Black Woodpecker. 2nd year. Head pattern: top male (19-III) (photo: Lukács Katalin Odett); bottom female (IV) (photo: Ondrej Kauzál).



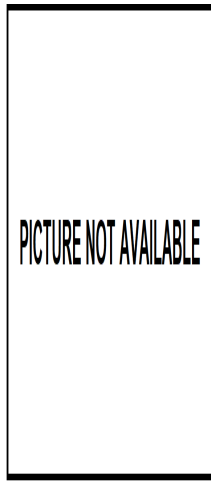
Black Woodpecker. Juvenile. Head pattern: top male (16-VIII) (photo: José Manuel Carregal Silva); bottom female ().



Black Woodpecker. Adult. Crown pattern: left male (); right female ().

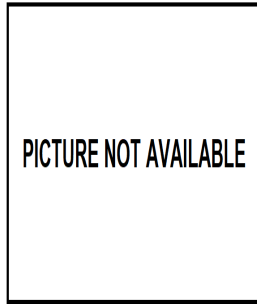
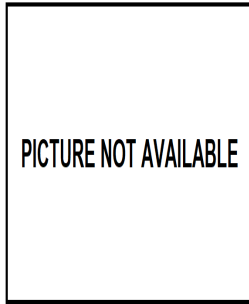


Black Woodpecker. 2nd year. Crown pattern: left male (); right female ().

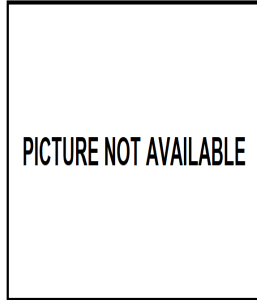
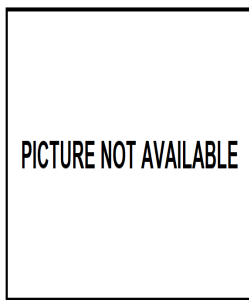


Black Woodpecker. Juvenile. Crown pattern: left male (16-VIII) (photo: José Manuel Carregal Silva); right female ().

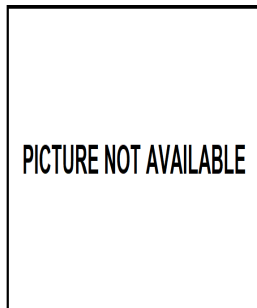
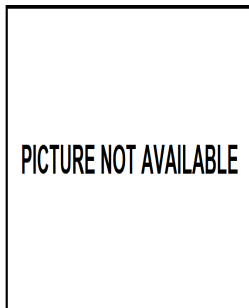
08630 Black Woodpecker (*Dryocopus martius*)



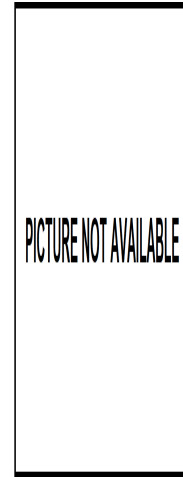
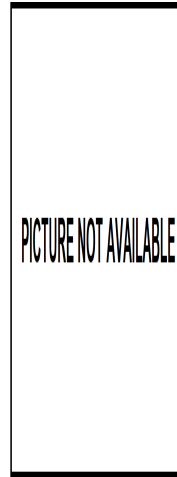
Black Woodpecker. Adult. Breast pattern: left male (); right female ().



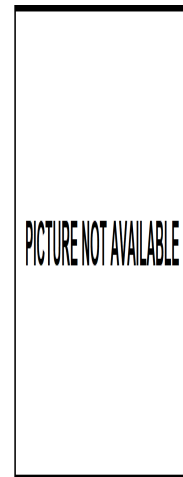
Black Woodpecker. 2nd year. Breast pattern: left male (); right female ().



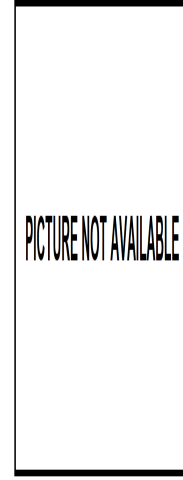
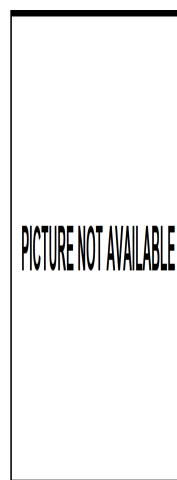
Black Woodpecker. Juvenile. Breast pattern: left male (); right female ().



Black Woodpecker. Adult. Upperparts pattern: left male (); right female ().



Black Woodpecker. 2nd year. Upperparts pattern: left male (); right female ().

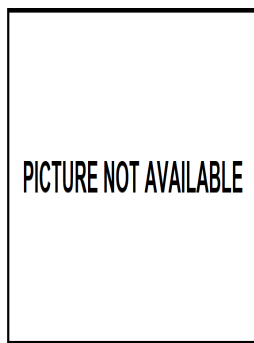
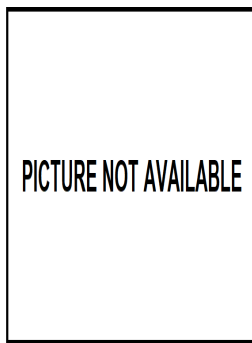


Black Woodpecker. Juvenile. Upperparts pattern: left male (); right female ().

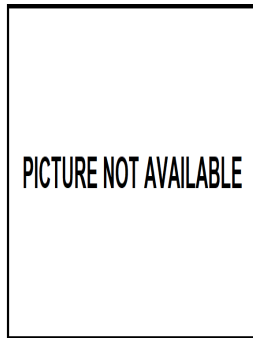
08630 Black Woodpecker (*Dryocopus martius*)



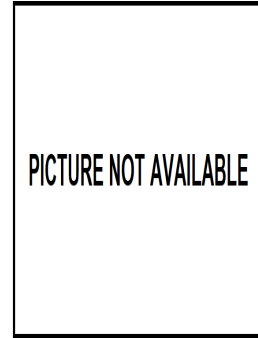
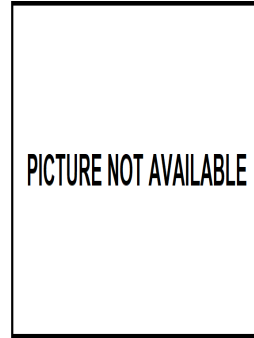
Black Woodpecker. Adult. Tail pattern: left male (IV) (photo: Ondrej Kauzál); right female (IV) (photo: Ondrej Kauzál).



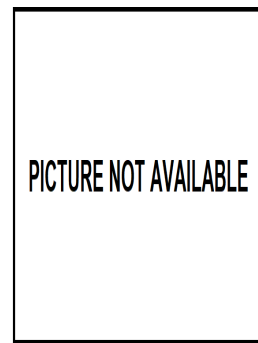
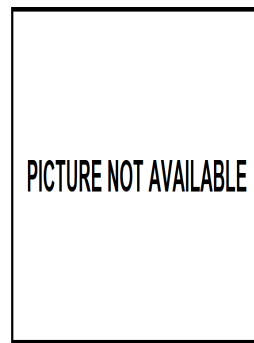
Black Woodpecker. 2nd year. Tail pattern: left male (); right female ().



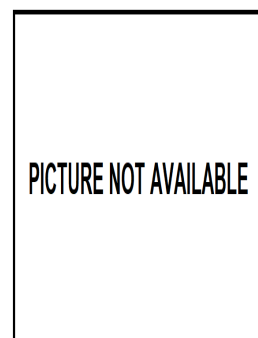
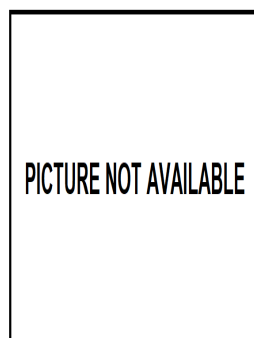
Black Woodpecker. Juvenile. Tail pattern: left male (16-VIII) (photo: José Manuel Carregal Silva); right female ().



Black Woodpecker. Adult. Pattern of undertail covers: left male (); right female ().



Black Woodpecker. 2nd year. Pattern of undertail covers: left male (); right female ().



Black Woodpecker. Juvenile. Pattern of undertail covers: left male (); right female ().



Black Woodpecker. Adult. Male: pattern of primary coverts (IV) (photo: Ondrej Kauzál).



Black Woodpecker. Adult. Female: pattern of primary coverts (IV) (photo: Ondrej Kauzál).



PICTURE NOT AVAILABLE

Black Woodpecker. 2nd year. Female: pattern of primary coverts ().



Black Woodpecker. Juvenile. Male: pattern of primary coverts (16-VIII) (photo: José Manuel Carregal Silva)



PICTURE NOT AVAILABLE

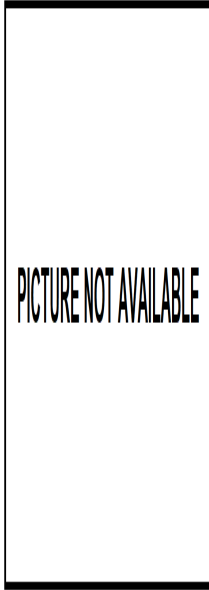
Black Woodpecker. 2nd year. Male: pattern of primary coverts ().



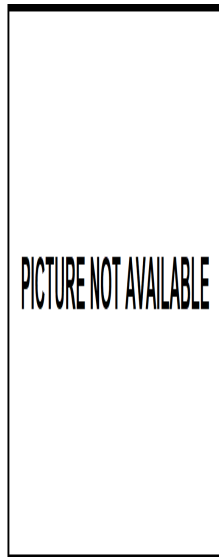
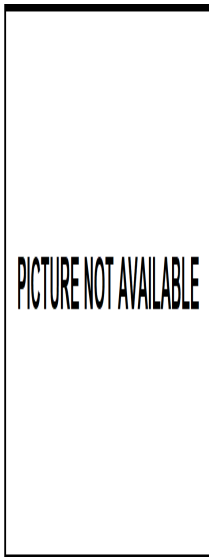
PICTURE NOT AVAILABLE

Black Woodpecker. Juvenile. Female: pattern of primary coverts ().

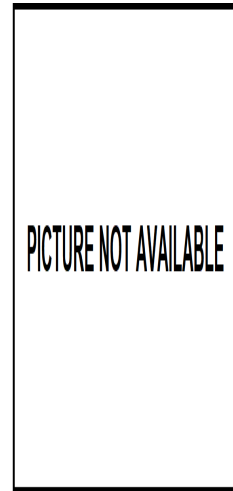
08630 Black Woodpecker (*Dryocopus martius*)



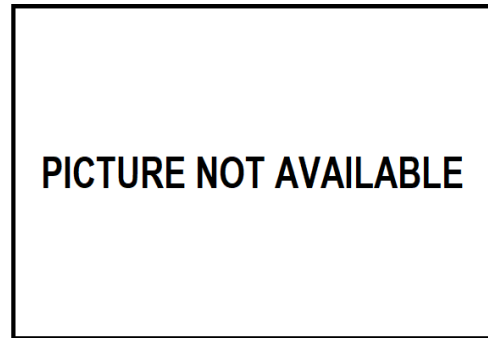
Black Woodpecker. Adult. Pattern of tertials: left male (); right female (IV) (photo: Ondrej Kauzál).



Black Woodpecker. 2nd year. Pattern of tertials: left male (); right female ().



Black Woodpecker. Juvenile. Pattern of tertials: left male (16-VIII) (photo: José Manuel Carregal Silva); right female ().



Black Woodpecker. Adult. Male: pattern of primaries ().



Black Woodpecker. Adult. Female: pattern of primaries

PICTURE NOT AVAILABLE

Black Woodpecker. 2nd year. Male: pattern of primaries ().

PICTURE NOT AVAILABLE

Black Woodpecker. 2nd year. Female: pattern of primaries ().



Black Woodpecker. Juvenile. Male: pattern of primaries (16-VIII) (photo: José Manuel Carregal Silva)

PICTURE NOT AVAILABLE

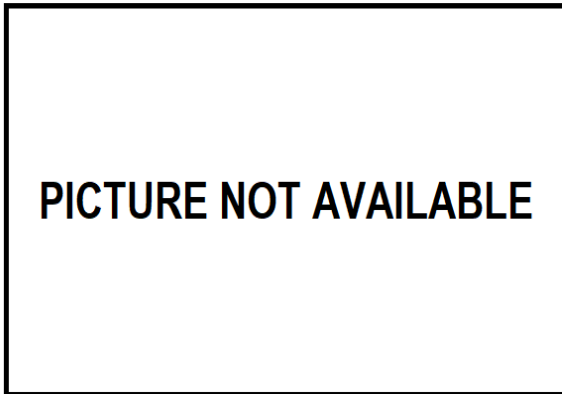
Black Woodpecker. Juvenile. Female: pattern of primaries ().



Black Woodpecker. Adult. Male: pattern of secondaries (IV) (photo: Ondrej Kauzál).



Black Woodpecker. Adult. Female: pattern of secondaries (IV) (photo: Ondrej Kauzál).



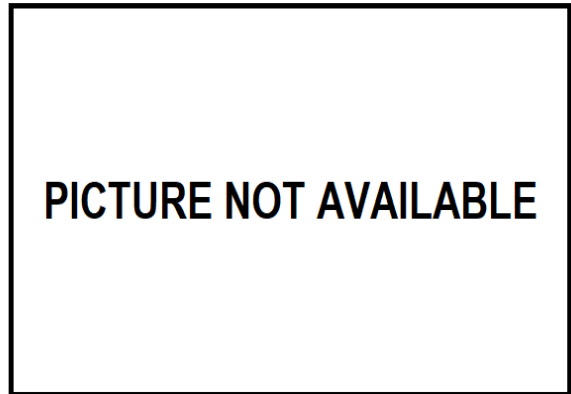
Black Woodpecker. 2nd year. Male: pattern of secondaries ().



Black Woodpecker. 2nd year. Female: pattern of secondaries ().



Black Woodpecker. Juvenile. Male: pattern of secondaries (16-VIII) (photo: José Manuel Carregal Silva)



Black Woodpecker. Juvenile. Female: pattern of secondaries ().



Black Woodpecker. Adult. Male: pattern of wing (IV) (photo: Ondrej Kauzál).



Black Woodpecker. Adult. Female: pattern of wing (IV) (photo: Ondrej Kauzál).

PICTURE NOT AVAILABLE

Black Woodpecker. 2nd year. Male: pattern of wing ().

PICTURE NOT AVAILABLE

Black Woodpecker. 2nd year. Female: pattern of wing ().



Black Woodpecker. Juvenile. Male: pattern of wing (16-VIII) (photo: José Manuel Carregal Silva)

PICTURE NOT AVAILABLE

Black Woodpecker. Juvenile. Female: pattern of wing ().