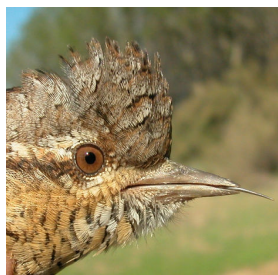




Wryneck. Spring. Adult (01-VI).

IDENTIFICATION

16-18 cm. Brown and grey upperparts; grey underparts, with buff and barred breast; tail with grey and brown bars; grey-brown bill and legs.



Wryneck. Pattern of head, upperparts and breast.

SIMILAR SPECIES

This species is unmistakable.

SEXING

Plumage of both sexes alike.

AGEING

5 age groups can be recognised:

Juvenile with grey iris; the outermost primary (10th) long and broad reaching half length of 9th primary.

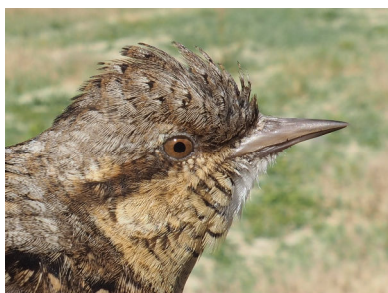
1st year autumn with dull brown iris; **juvenile** primary coverts with pointed tips; fresh secondaries of a single generation with a evenly pattern of blackbrown patches in a well aligned row (this characteristic is useful for ageing as long as the **juvenile** secondaries remain unmoulted); tertials with a light spot on the tip; after moult, 10th primary minute and short as in **adults**.

2nd year spring with two tone iris, hazel in the centre and grey at the distal part (**CAUTION**: not always, individual variation among each age classes has a broad overlap); slight difference in wear between primaries and secondaries; sometimes with some retained **juvenile** secondaries, more worn and usually longer than neighbouring ones (**CAUTION**: they are not always longer than **adult** secondaries); primary coverts retained with a similar wear (**CAUTION**: usually the inner primary coverts are slightly less abraded than the outermost ones leaving the impression of a false moult limit); primary coverts are similarly fresh as primaries.

2nd year autumn/3rd year spring with most birds renewed the 1-2 outer primary coverts although more than 2 outer primary coverts may be moulted or rarely none (**CAUTION**: the outermost primary covert is small, thin, hidden and often unnoticed).

Adult with iris reddish-brown; secondaries with an unevenly pattern of blackbrown patches in not well alligned row. In **spring** usually with primaries slightly more worn than secondaries but this low difference in wear is difficult to see. In **autumn** with fresh body feathers, primaries, tertials and tail, but secondaries are worn. (**CAUTION**: we consider birds from the **3rd year autumn** onwards as '**adults**'. However, nearly all birds still show primary coverts **juvenile**, which will be extremely worn, discoloured and faded-out, even at the age of **5th year autumn**).

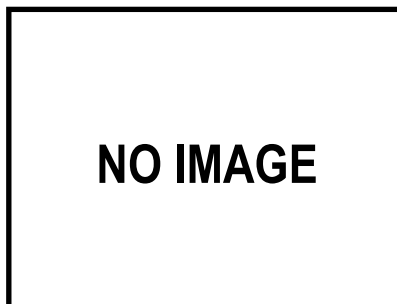
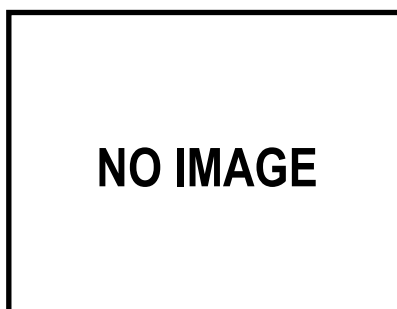
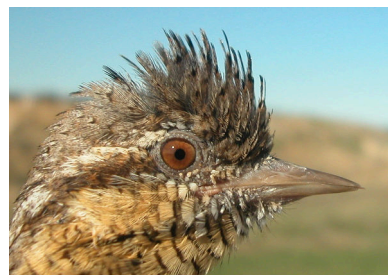
08480 Eurasian Wryneck (Jynx torquilla)

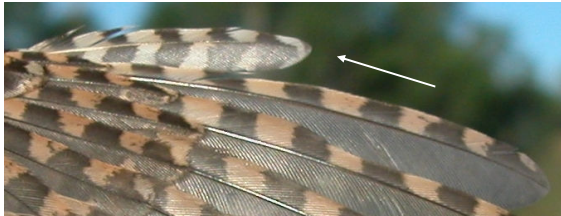


Wryneck. Spring. Ageing. Colour of iris: from top to bottom: adult; 3rd year; variation in 2nd year birds and juvenile.

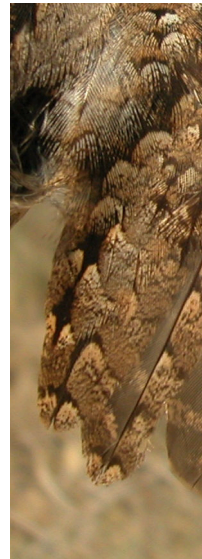


Wryneck. Autumn. Ageing. Colour of iris: from top to bottom: adult; 2nd year and variation in 1st year birds.

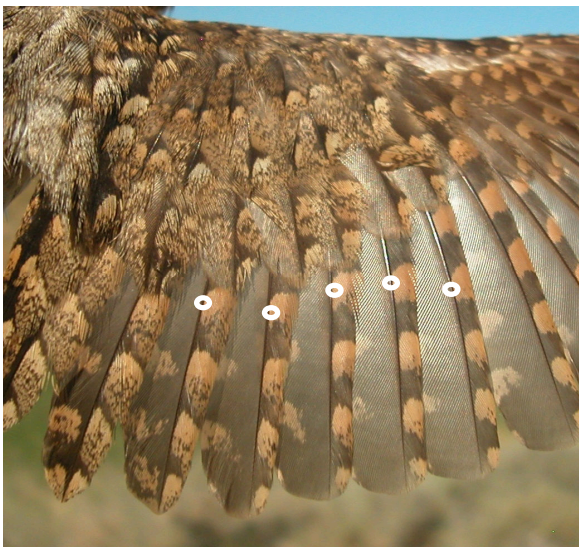




Wryneck. Ageing. Length of the 10th primary: top adult; bottom juvenile.



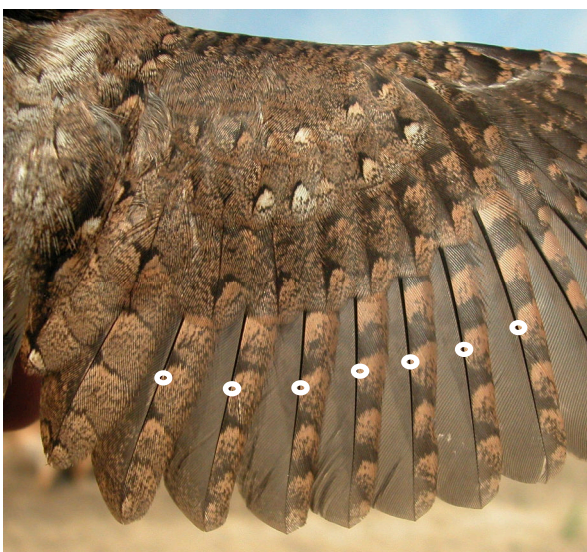
Wryneck. Ageing. Pattern of tips of tertials: left adult; right juvenile.



Wryneck. Ageing. Adult. Pattern of secondaries: dark patches form an unevenly row.



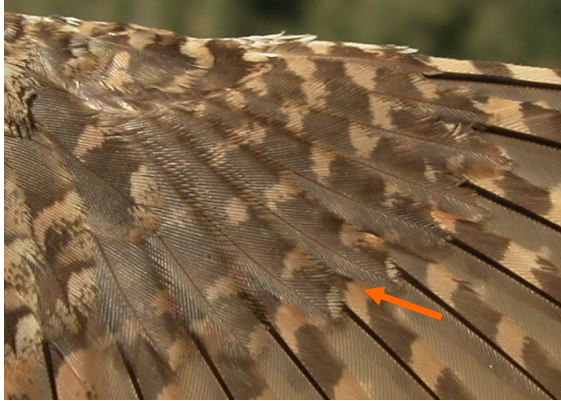
Wryneck. Ageing. Spring. Primary coverts: adult (probably a 4th year bird with two outer feathers moulted)



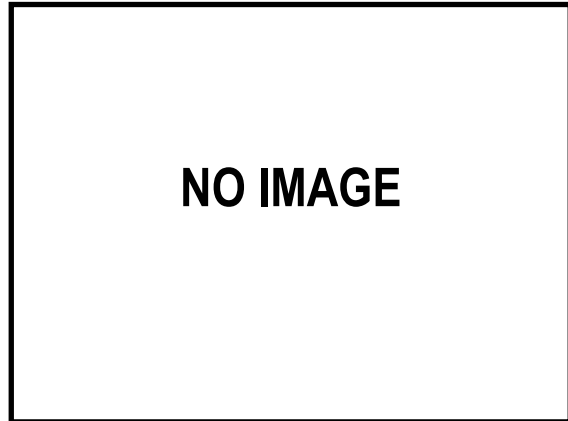
Wryneck. Ageing. Pattern of juvenile secondaries: dark patches form a well aligned row.



Wryneck. Ageing. Spring. Primary coverts: 3rd year (only the outermost feather moulted).



Wryneck. Ageing. Spring. Primary covers: 2nd year with outer feathers slightly more worn.



Wryneck. Ageing. Autumn. Primary covers: 2nd year.



Wryneck. Ageing. Spring. Primary covers: juvenile.



Wryneck. Ageing. Autumn. Primary covers: 1st year.



Wryneck. Ageing. Autumn. Primary covers: adult (probably a 4th year bird with the outermost feather moulted but this moulting strategy is also possible in 3rd year birds).

MOULT

Partial **postbreeding** moult, changing all feathers except most primary covers (sometimes retain all during the first **postbreeding** moult) and some secondaries which are regularly retained. Partial **postjuvenile** moult including all feathers except secondaries, also retaining all the primary covers, usually tertials and some birds the central tail feathers. Both age classes have a **prebreeding** moult involving body feathers, wing coverts and all or part of the tail, moulting regularly some secondaries in the winter quarters.

PHENOLOGY

I	II	III	IV	V	VI	VII	VIII	IX	X	XI	XII

■ Summer visitor ■ Resident
■ Wintering ■ On passage

08480 Eurasian Wryneck (Jynx torquilla)



Wryneck. Spring. 3rd year (18-V).



Wryneck. Spring. 2nd year (28-V).

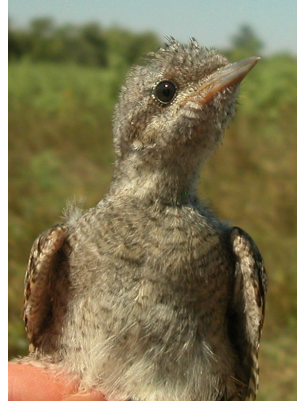


Wryneck. Spring. Juvenile (15-VI).



Wryneck. Spring. Breast pattern: left adult (01-VI); right 3rd year (28-V).

W r y n e c k .
Spring. Head
pattern and
iris colour.
From top to
bottom: adult
(01-VI); 3rd
year (18-V);
2nd year (28-
V); juvenile
(15-VI).



Wryneck. Spring. Breast pattern: left 2nd year (28-V); right juvenile (15-VI).



Wryneck. Spring. Adult: pattern of tail (01-VI).



Wryneck. Spring. Upperparts pattern: left adult (01-VI); right 3rd year (28-V).



Wryneck. Spring. 3rd year: pattern of tail (28-V).



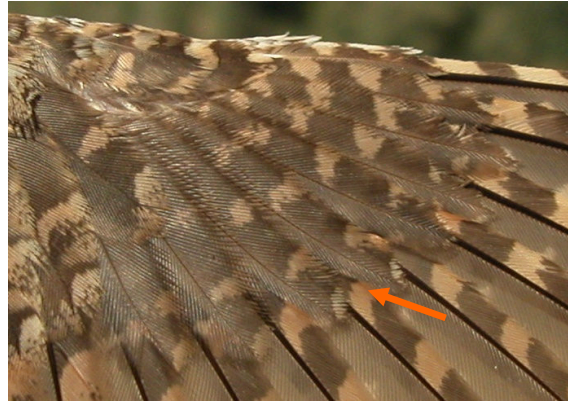
Wryneck. Spring. Upperparts pattern: left 2nd year (28-V); right juvenile (15-VI).



Wryneck. Spring. 2nd year: pattern of tail (28-V).



Wryneck. Spring. Juvenile: pattern of tail (15-VI).



Wryneck. Spring. Primary coverts: 2nd year with outer feathers slightly more worn (28-V) .



Wryneck. Spring. Juvenile: patch on tips of primary coverts with "V" shaped pattern (15-VI).

Wryneck. Spring. Primary coverts: adult with very worn juvenile inner feathers (01-VI).



Wryneck. Spring. Juvenile: patch on tips of primary coverts without "V" shaped pattern (15-VI).

Wryneck. Spring. Primary coverts: 3rd year with the outermost feather moulted (28-V).



Wryneck. Spring. Adult: pattern of primaries (01-VI).



Wryneck. Spring. Juvenile: pattern of primaries (15-VI).



Wryneck. Spring. 3rd year: pattern of primaries (18-V).



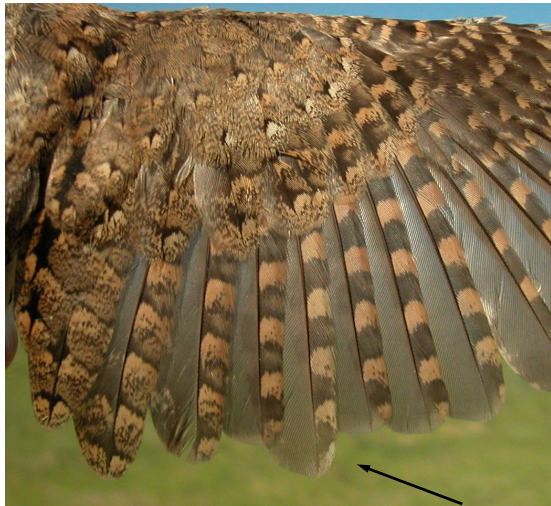
Wryneck. Spring. Adult: pattern of secondaries (01-VI).



Wryneck. Spring. 2nd year: pattern of primaries (28-V).



Wryneck. Spring. 3rd year: pattern of secondaries (18-V).



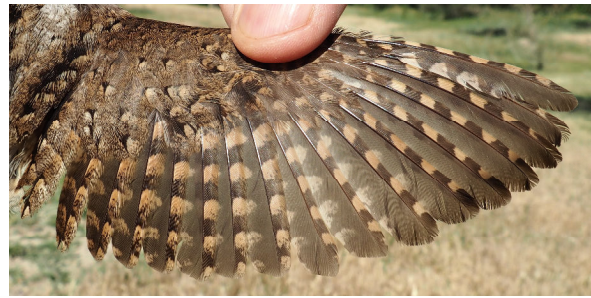
Wryneck. Spring. 2nd year: pattern of secondaries with one juvenile secondary retained (05-IV).



Wryneck. Spring. 2nd year: pattern of secondaries (28-V).



Wryneck. Spring. Juvenile: pattern of secondaries (15-VI).



Wryneck. Spring. Adult: pattern of wing (01-VI).



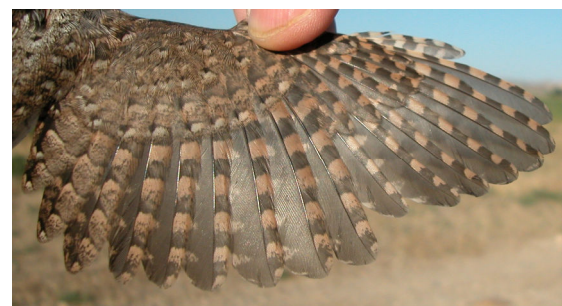
Wryneck. Spring. 3rd year: pattern of wing (18-V).



Wryneck. Spring. 2nd year: pattern of wing with one juvenile secondary retained (05-IV).



Wryneck. Spring. 2nd year: pattern of wing (28-V).



Wryneck. Spring. Juvenile: pattern of wing (15-VI).

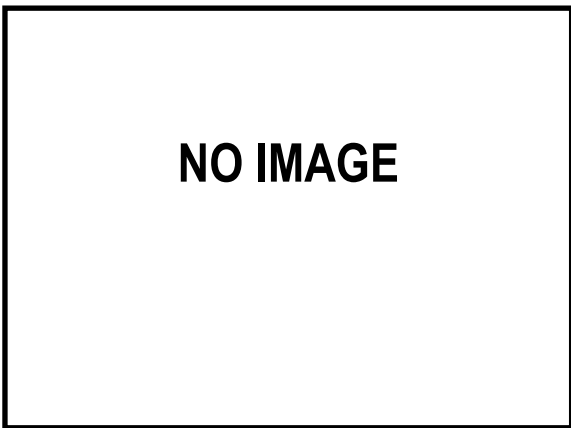
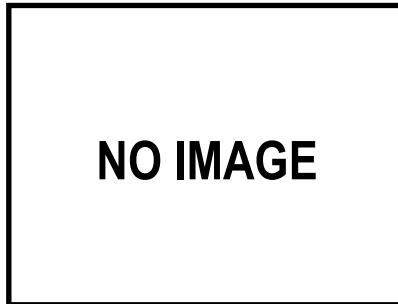
08480 Eurasian Wryneck (Jynx torquilla)



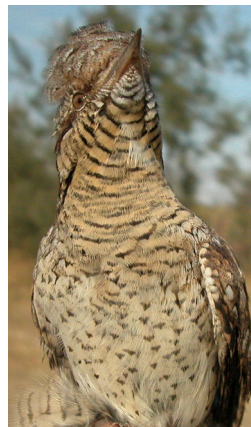
Wryneck. Autumn. Adult (09-IX).



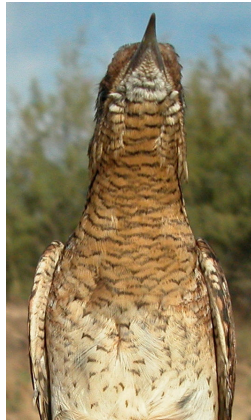
Wryneck. Autumn. Iris colour. From top to bottom: adult (09-IX); 2nd year (); 1st year (14-IX).



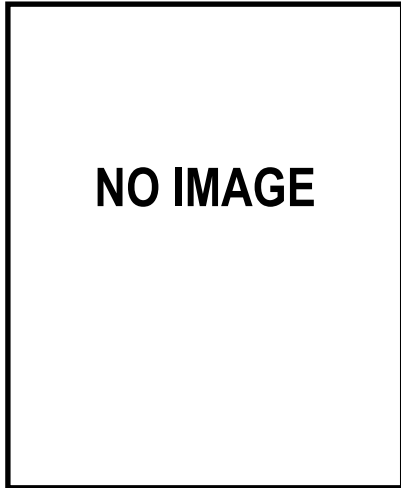
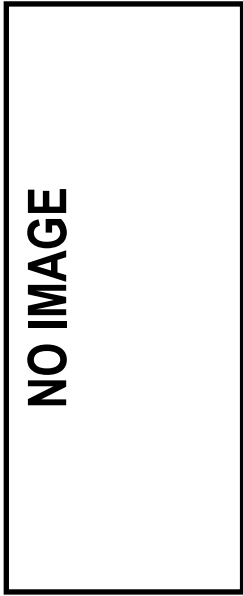
Wryneck. Autumn. 2nd year ().



Wryneck. Autumn. 1st year (14-VIII).



Wryneck. Autumn. Breast pattern: top left adult (09-IX); top right 2nd year; left 1st year (14-VIII).



Wryneck. Autumn. 2nd year: tail pattern ().



Wryneck. Autumn. Upperparts pattern: top left adult (09-IX); top right 2nd year; left 1st year (14-VIII).



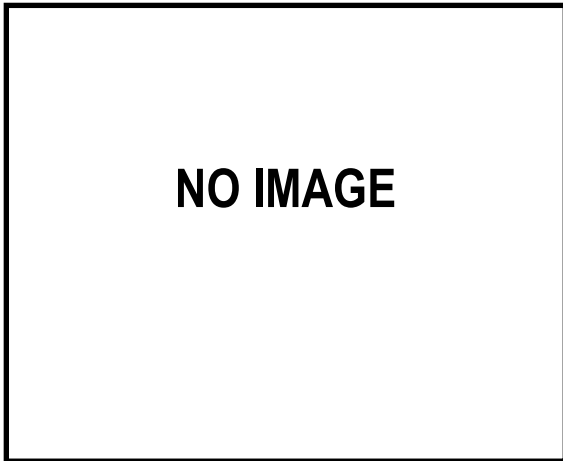
Wryneck. Autumn. 1st year: tail pattern (14-VIII).



Wryneck. Autumn. Adult: tail pattern (09-IX).



Wryneck. Autumn. Pattern of primary coverts: adult (probably a 4th year bird with the outermost feather moulted but this moulting strategy is also possible in 3rd year birds) (09-IX).



NO IMAGE

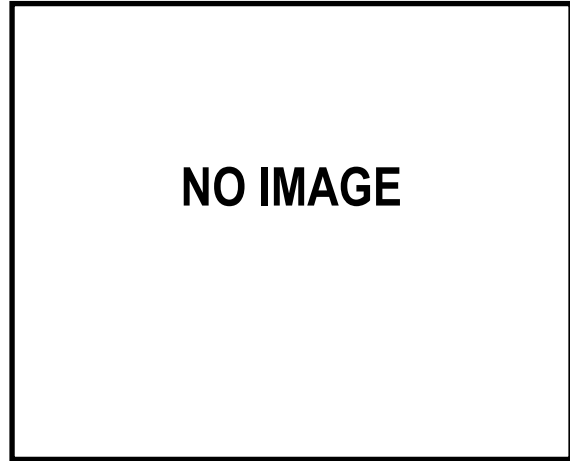
Wryneck. Autumn. 1st year: pattern of primary coverts ().



Wryneck. Autumn. 1st year: pattern of primary coverts (14-VIII).



Wryneck. Autumn. Adult: pattern of primaries (09-IX).



NO IMAGE

Wryneck. Autumn. 2nd year: pattern of primaries ().



Wryneck. Autumn. 1st year: pattern of primaries (14-VIII).



Wryneck. Autumn. Adult: pattern of secondaries (09-IX).

NO IMAGE

NO IMAGE

Wryneck. Autumn. 2nd year: pattern of wing ().

Wryneck. Autumn. 2nd year: pattern of secondaries ().



Wryneck. Autumn. 1st year: pattern of wing (14-VIII).

Wryneck. Autumn. 1st year: pattern of secondaries (14-VIII).



Wryneck. Autumn. Adult: pattern of wing (09-IX).

ACKNOWLEDGEMENTS

We are grateful to Jacques Laesser for reviewing the text and for his contributions to improve it.

REFERENCES

González, J.V., Gómez, J.R. & Muñoz, B., 2002. *El torcecuello. Determinación de la edad y el sexo, reproducción y fenología en el Noroeste peninsular ibérico*. S.A.H.N.E. Gijón.

Laesser, J. & van Wijk, R.E., 2017. Postponed moult of primary coverts untangles the ageing of Wrynecks *Jynx torquilla*, *Ringing & Migration*, 32:2, 87-103.