

275 European Nightjar

Put your logo here

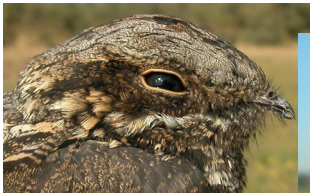


Nightjar. Adult. Male (04-IX)

EUROPEAN NIGHTJAR (*Caprimulgus europaeus*)

IDENTIFICATION

23-27 cm.; wing 52-59 cm. Grey brown plumage; grey brown wings and tail, with white patches in **male**; brown neck, with some white patches on sides; yellow buff underparts, strongly streaked transversally.



Nightjar. Pattern of head and nape.



SIMILAR SPECIES

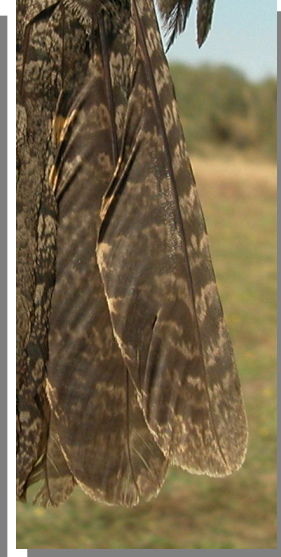
Very similar to **Red-necked Nightjar**, which is bigger (30-40 cm, wing length 60-65 cm) and has a rusty red neck band.



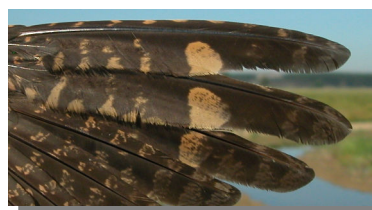
Red-necked Nightjar

SEXING

In **adults**, **male** with two outermost tail feathers with a white patch on tips sized 20-30 mm; the three outermost primaries with a broad white patch on inner web. **Female** lacks white patches on wings (some birds have yellowish patches) and have a narrow and marmorated patch sized 3-4 mm on the outermost tail feathers. In **juveniles**, only some **males** can be safely sexed: the two outermost primaries with large buff patches, usually the outermost larger than the others; the two outermost tail feathers with broad buff patch on inner web. (**CAUTION**: birds with two outermost primaries with narrow pale patches and two outer tail feathers with a narrow pale patch can be of both sexes.)



Nightjar. Sexing. Adult. Pattern of the outermost tail feathers: left male; right female.



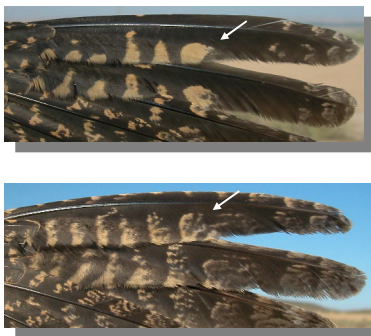
Nightjar. Sexing. Adult. Pattern of the outermost primaries: top male; middle and bottom females.

275 European Nightjar

Put your logo here



Nightjar. Sexing. Juvenile. Pattern of the outermost tail feathers: left male; right male/female.



Nightjar. Sexing. Juvenile. Pattern of the outermost primaries: top male; bottom male/female.

AGEING

3 age groups can be recognized:

Juvenile without white patches on primaries and tail feathers so resembles an **adult female**, but recognizable by very fresh plumage with all wing feathers of single age; alula, primary coverts and secondaries with a thin buff edge at tips; tail feathers with arrow-shaped dark marks; outer tail feather narrow, with rounded tip and dark marks near the tip.

2nd year only in birds with retained **juvenile** primaries or secondaries, usually shorter than **adult** feathers: sometimes coverts under alula and some **juvenile** alula feather unmoulted.

Adult with alula, primary coverts and secondaries with dark tips; coverts under alula and alula feathers moulted and without moult limits; worn flight feathers; if there are two generations of flight feathers both are with **adult** pattern and similar length. **Adult male** with white patches on wing and tail; **adult female** with outer tail feather broad, with square tip and without dark marks near the tip.



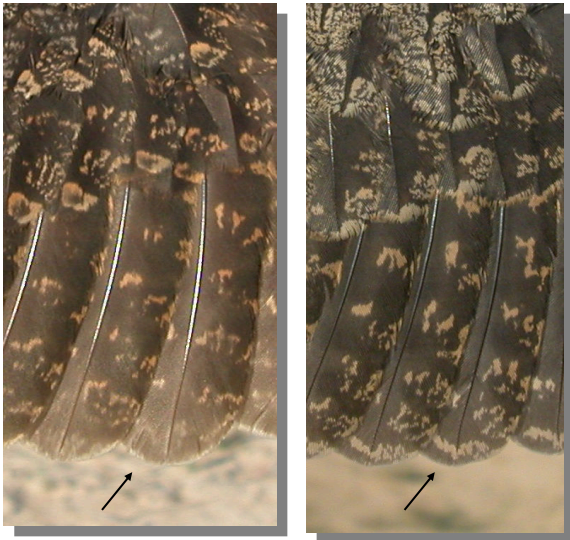
Nightjar. Ageing. Pattern of the central tail feather: left adult female; right juvenile.



Nightjar. Ageing. Pattern of the outermost tail feather: left adult female; right juvenile.

275 European Nightjar

Put your logo here



Nightjar. Ageing. Pattern of secondaries: left adult; right juvenile.

MOULT

Complete **postbreeding** and **postjuvenile** moults starting in July in breeding areas, suspended before migration and finished in wintering sites; the amount of feathers moulted in Europe is very variable since birds changing all body feathers and tertials to those with no moult. Both age classes can leave unmoulted secondaries; some **juvenile** birds can have unmoulted primaries too.

PHENOLOGY

I	II	III	IV	V	VI	VII	VIII	IX	X	XI	XII

STATUS IN ARAGON

Summer visitor, widely distributed on passage. Breeds in forests in Northern area of the Region.



Nightjar. Adult. Female (28-V).



Nightjar. 2nd year. Male (02-VI).



Nightjar. 2nd year. Female (21-V).



Nightjar. Juvenile. Male (12-VIII)



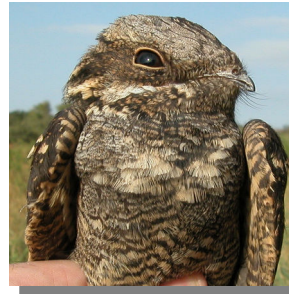
Nightjar. Juvenile. Male/female (12-VIII)

275 European Nightjar

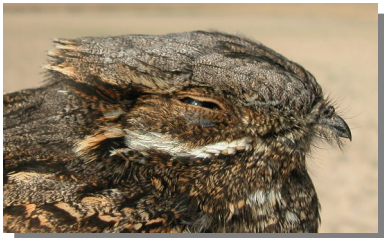
Put your logo here



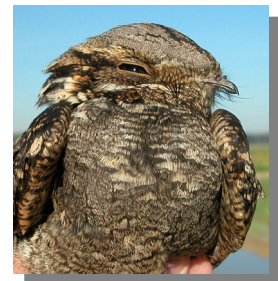
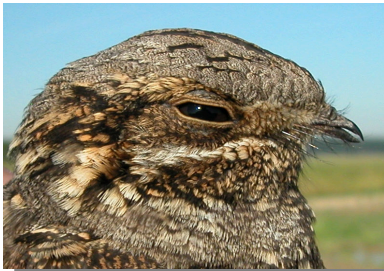
Nightjar.
Adult. Head
pattern: top
male (04-
IX); bottom
female (28-
V).



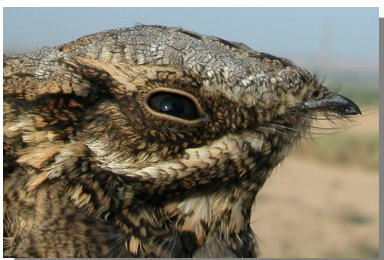
Nightjar. Adult. Breast pattern: left male (04-IX);
right female (28-V).



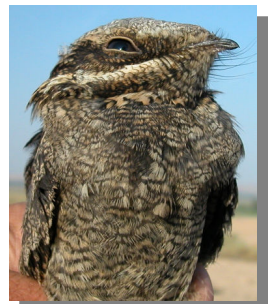
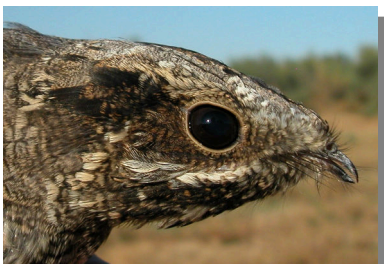
Nightjar. 2nd
year. Head
pattern: top
male (02-
VI); bottom
female (21-
V).



Nightjar. 2nd year. Breast pattern: left male (02-VI);
right female (21-V).



Nightjar.
Juvenile.
Head pattern:
top male (12-
VIII); bottom
male/female
(12-VIII).



Nightjar. Juvenile. Breast pattern: left male (12-
VIII); right male/female (12-VIII).

275 European Nightjar

Put your logo here



Nightjar. Adult. Upperpart pattern: left male (04-IX); right female (28-V).



Nightjar. Juvenile. Upperpart pattern: left male (12-VIII); right male/female (12-VIII).



Nightjar. 2nd year. Upperpart pattern: left male (02-VI); right female (21-V).



Nightjar. Adult. Male: pattern of tail and the outermost tail feather (11-VI).

275 European Nightjar

Put your logo here



Nightjar.
Adult. Female: pattern of tail and the outermost tail feather (28-V).



Nightjar.
Juvenile. Male: pattern of tail and the outermost tail feather (12-VIII).



Nightjar.
2nd year. Male: pattern of tail and the outermost tail feather (02-VI).



Nightjar.
Juvenile. Male/female: pattern of tail and the outermost tail feather (12-VIII).



Nightjar.
2nd year. Female: pattern of tail and the outermost tail feather (21-V).



Nightjar. Adult. Male: pattern of alula (11-VI).

275 European Nightjar

[Put your logo here](#)



Nightjar. Adult. Female: pattern of alula (28-V).



Nightjar. Juvenile. Male/female: pattern of alula (12-VIII).



Nightjar. 2nd year. Female: pattern of alula (02-VI).



Nightjar. Adult. Male: pattern of coverts under the alula (11-VI).



Nightjar. 2nd year. Female: pattern of alula (21-V).



Nightjar. 2nd year. Male: pattern of coverts under the alula (11-VI).



Nightjar. Juvenile. Male: pattern of alula (12-VIII).



Nightjar. Adult. Male: pattern of the outermost primaries (04-IX).

275 European Nightjar

Put your logo here



Nightjar. Adult. Female: pattern of the outermost primaries (28-V).



Nightjar. Juvenile. Male/female: pattern of the outermost primaries (20-VIII).



Nightjar. 2nd year. Male: pattern of the outermost primaries (02-VI).



Nightjar. Adult. Male: pattern of primaries (04-IX).



Nightjar. 2nd year. Female: pattern of the outermost primaries (21-V).



Nightjar. Adult. Female: pattern of primaries (28-V).



Nightjar. Juvenile. Male: pattern of the outermost primaries (12-VIII).



Nightjar. 2nd year. Male: pattern of primaries (02-VI).

275 European Nightjar

Put your logo here



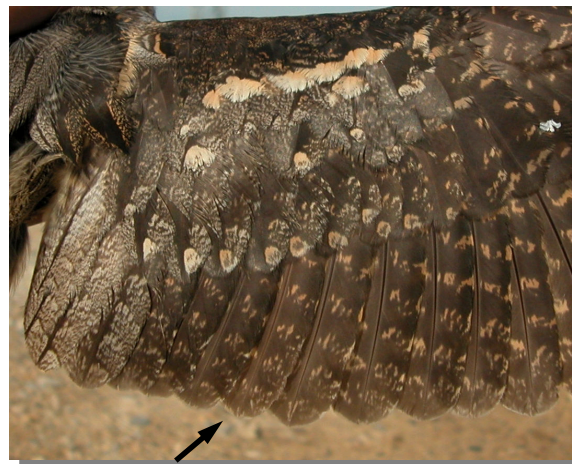
Nightjar. 2nd year. Female: pattern of primaries (21-V).



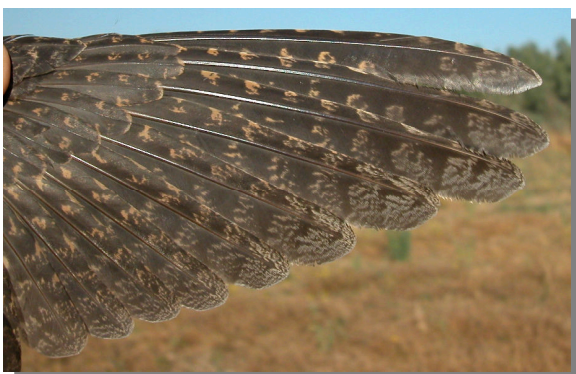
Nightjar. Adult. Male: pattern of secondaries with one age of feathers (04-IX).



Nightjar. Juvenile. Male: pattern of primaries (12-VIII).



Nightjar. Adult. Male: pattern of secondaries with two ages of feathers (11-VI).



Nightjar. Juvenile. Male/female: pattern of primaries (20-VIII).



Nightjar. Adult. Female: pattern of secondaries with one age of feathers (12-VIII).

275 European Nightjar

Put your logo here



Nightjar. Adult. Female: pattern of secondaries with two ages of feathers (04-IX).



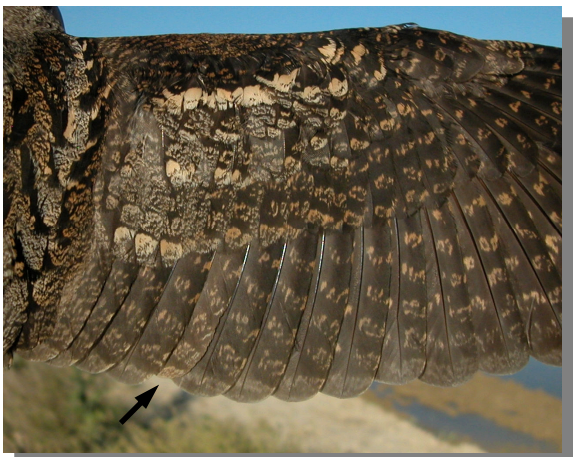
Nightjar. Juvenile. Male: pattern of secondaries and wing coverts (12-VIII).



Nightjar. 2nd year. Male: pattern of secondaries and wing coverts (02-VI).



Nightjar. Juvenile. Male/female: pattern of secondaries and wing coverts (12-VIII).



Nightjar. 2nd year. Female: pattern of secondaries and wing coverts (21-V).



Nightjar. Adult. Male: pattern of wing without retained feathers (04-IX).

275 European Nightjar

Put your logo here



Nightjar. Adult. Male: pattern of wing with retained feathers (11-VI).

Nightjar. 2nd year. Male: pattern of wing (02-VI).



Nightjar. Adult. Female: pattern of wing without retained feathers (12-VIII).

Nightjar. 2nd year. Female: pattern of wing (21-V).



Nightjar. Adult. Female: pattern of wing with retained feathers (04-IX).

Nightjar. Juvenile. Male: pattern of wing (12-VIII).

275 European Nightjar

Put your logo here



Nightjar. Juvenile. Male/female: pattern of wing (12-VIII).