

07240 Common Cuckoo (*Cuculus canorus*)



Cuckoo. Adult. Male (02-VI).

IDENTIFICATION

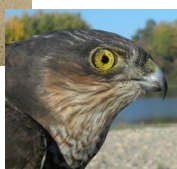
32-34 cm. **Adult** with grey head and upperparts; long tail with white spots on tip; some **females** have chestnut upperparts with reddish head and rump. **Juveniles** chestnut and strongly barred.

SIMILAR SPECIES

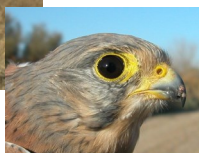
Size and long tail recall a **Sparrowhawk** or a **Kestrel**, both with curved bills.



Sparrowhawk.



Kestrel.



SEXING

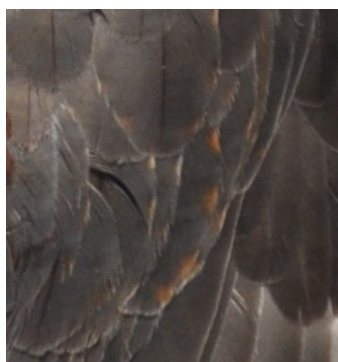
Male with slate grey nape, chin and throat extending well down breast; with clear demarcation line between grey breast and bars on belly; grey median and greater coverts always without buff spots. **Female** with two colour morphs; in **rufous morph** resembles a **juvenile** and is unmistakable; in **grey morph** very similar to **male**, but usually with rufous background colour under bars of breast and sides of neck, without a well defined line of separation; sometimes with rufous spots on grey median and greater coverts (**CAUTION: some females with grey morph are indistinguishable from males**). **Juveniles** cannot be sexed using plumage pattern.



Cuckoo. Sexing. Pattern of breast: top left male; top right female with grey morph; left female with rufous morph.



Cuckoo. Sexing. Pattern of wing coverts: top male/female without spots; bottom female with rufous spots (photo: Mar-



07240 Common Cuckoo (*Cuculus canorus*)



AGEING

3 age groups can be recognized:

Juvenile with fresh plumage; variable plumage pattern going on upperparts from chestnut barred to uniform grey with white fringes; whitish fringes on wing coverts and flight feathers; secondaries and greater coverts barred or spotted chestnut; white patch on nape; grey iris.

2nd year indistinguishable if moult has been complete; if wing coverts or secondaries have been retained then with moult limit between barred and worn **juvenile** feathers and unbarred, longer and fresh feathers with **adult** pattern (**CAUTION:** in **juveniles** with barred weakly marked these feathers may be difficult to detect).

Adult without white fringes on wing coverts and flight feathers; secondaries without chestnut barred; whitout patch on nape; yellow iris. **CAUTION:** some **adult** birds arrest their moult and have in spring two generations of secondaries distinguishable by different wear, but old feathers lack **juvenile** barred.



Cuckoo. Ageing. Pattern of secondaries: juvenile.

MOULT

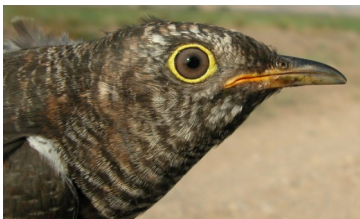
Complete **postbreeding** and **postjuvenile** moults, starting in wintering sites; **both age classes** can arrest their moult having then in spring two generations of flight feathers.

PHENOLOGY

I	II	III	IV	V	VI	VII	VIII	IX	X	XI	XII



C u c k o o . Ageing. Pattern of iris: top adult; bottom juvenile.



Cuckoo. Ageing. Pattern of secondaries: adult.



Cuckoo. Ageing. Pattern of secondaries: 2nd year (photo: Pere Josa).



Cuckoo. Adult. Female with grey morph (28-V).



Cuckoo. Adult. Female with grey and rufous morph (18-V).

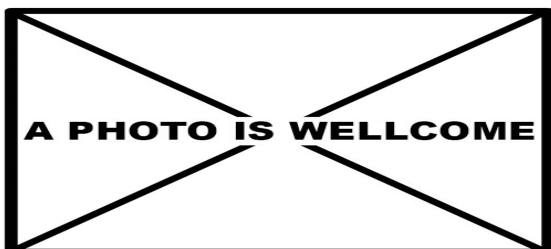


Cuckoo. Adult. Female with rufous morph (05-V).

07240 Common Cuckoo (*Cuculus canorus*)



Cuckoo. 2nd year. Male (28-V).



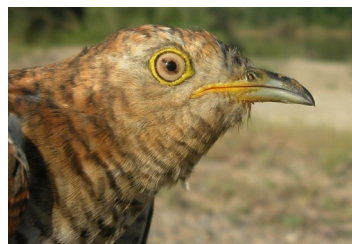
Cuckoo. 2nd year. Female ().



Cuckoo. Juvenile (21-VIII).



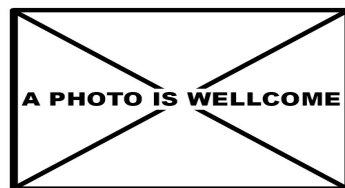
Cuckoo. Adult. Head pattern: top male (02-VI); middle female with grey morph (28-V); bottom female with grey and rufous morph (18-V).



Cuckoo. Adult. Head pattern: female with rufous morph (05-V).

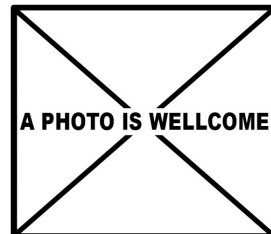
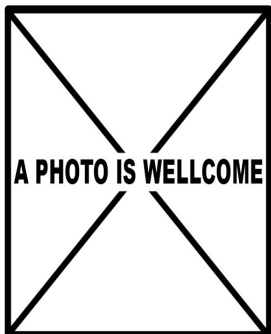


Cuckoo. Head pattern: top 2nd year male (28-V); middle 2nd year female (); bottom juvenile (21-VIII).



Cuckoo. Adult. Nape pattern: top left male (02-VI); top right female with grey morph (28-V); bottom left female with grey and rufous morph (18-V); bottom right female with rufous morph (05-V).

07240 Common Cuckoo (*Cuculus canorus*)



Cuckoo. Nape pattern: top left 2nd year male (28-V); top right 2nd year female (); left juvenile (21-VIII).



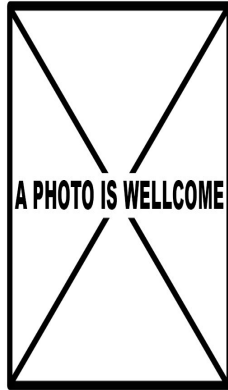
Cuckoo. Breast pattern: top left 2nd year male (28-V); top right 2nd year female (); left juvenile (21-VIII).



Cuckoo. Adult. Breast pattern: top left male (02-VI); top right female with grey morph (28-V); bottom left female with grey and rufous morph (18-V); bottom right female with rufous morph (05-V).

Cuckoo. Adult. Upperpart pattern: top left male (02-VI); top right female with grey morph (28-V); bottom left female with grey and rufous morph (18-V); bottom right female with rufous morph (05-V).

07240 Common Cuckoo (*Cuculus canorus*)



Cuckoo. Upperpart pattern: top left 2nd year male (28-V); top right 2nd year female (); left juvenile (21-VIII).



Cuckoo. Tail pattern: top left 2nd year male (28-V); top right 2nd year female (); left juvenile (21-VIII).



Cuckoo. Adult. Tail pattern: top left male (02-VI); top right female with grey morph (28-V); left female with rufous morph (05-V).



Cuckoo. Adult. Male: pattern of primaries (26-IV).



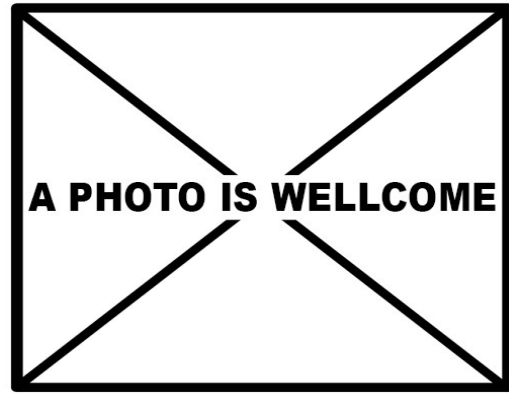
Cuckoo. Adult. Female with grey morph: pattern of primaries (28-V).



Cuckoo. Adult. Female with rufous morph: pattern of primaries (05-V).



Cuckoo. 2nd year. Male: pattern of primaries (28-V).



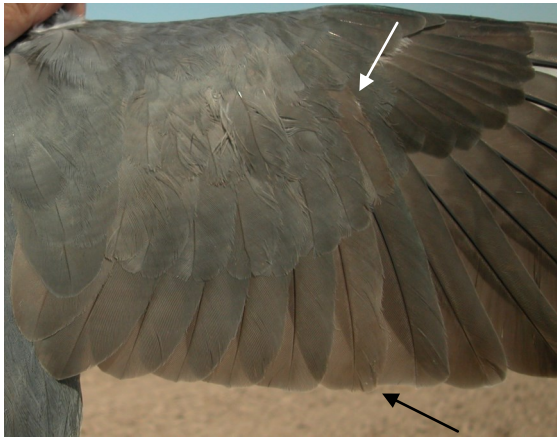
Cuckoo. 2nd year. Female: pattern of primaries ().



Cuckoo. Juvenile: pattern of primaries (21-VIII).



Cuckoo. Adult. Male with complete moult: pattern of wing coverts and secondaries (26-IV).



Cuckoo. Adult. Male with arrested moult: pattern of wing coverts and secondaries (12-IV).



Cuckoo. Adult. Female with arrested moult: pattern of wing coverts and secondaries (18-V).



Cuckoo. Adult. Female with grey morph: pattern of wing coverts without spots and secondaries (28-V).



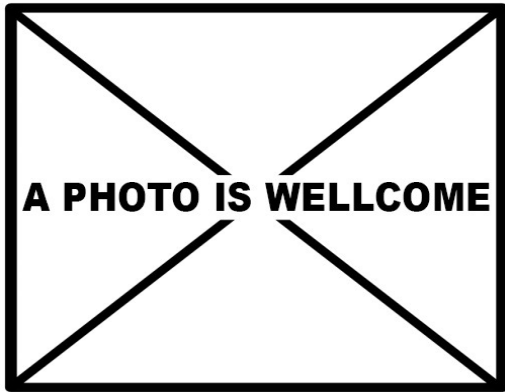
Cuckoo. Adult. Female with rufous morph: pattern of wing coverts and secondaries (05-V).



Cuckoo. Adult. Female with grey morph: pattern of wing coverts with spots and secondaries (14-VI) (Photo: Guillermo López Zamora).



Cuckoo. 2nd year. Male: pattern of wing coverts and secondaries (28-V).



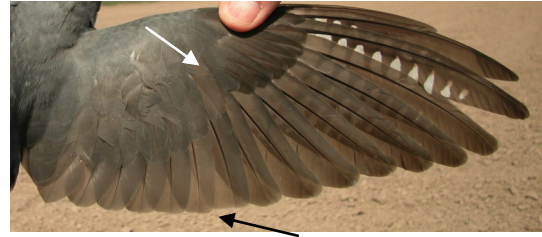
Cuckoo. 2nd year. Female: pattern of wing coverts and secondaries ().



Cuckoo. Juvenile: pattern of wing coverts and secondaries (21-VIII).



Cuckoo. Adult. Male with complete moult: pattern of wing (26-IV).



Cuckoo. Adult. Male with arrested moult: pattern of wing (12-IV).



Cuckoo. Adult. Female with grey morph: pattern of wing without swpots on coverts (28-V).



Cuckoo. Adult. Female with grey morph: pattern of wing with spots on coverts (14-VI) (Photo: Guillermo López Zamora).



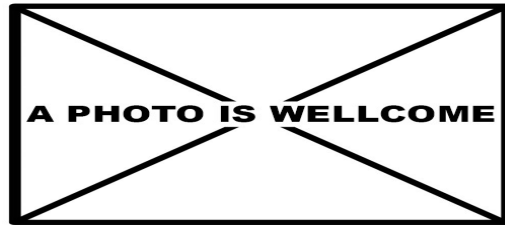
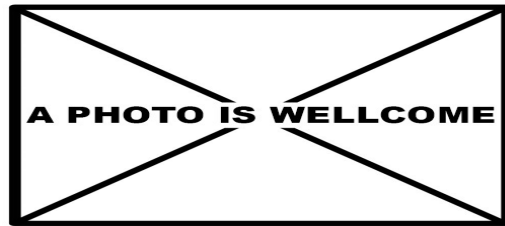
Cuckoo. Adult. Female with arrested moult: pattern of wing (18-V).



Cuckoo. Adult. Female with rufous morph: pattern of wing (05-V).



Cuckoo. 2nd year. Male: pattern of wing (28-V).



Cuckoo. 2nd year. Female: pattern of wing ().



Cuckoo. Juvenile: pattern of wing (21-VIII).