

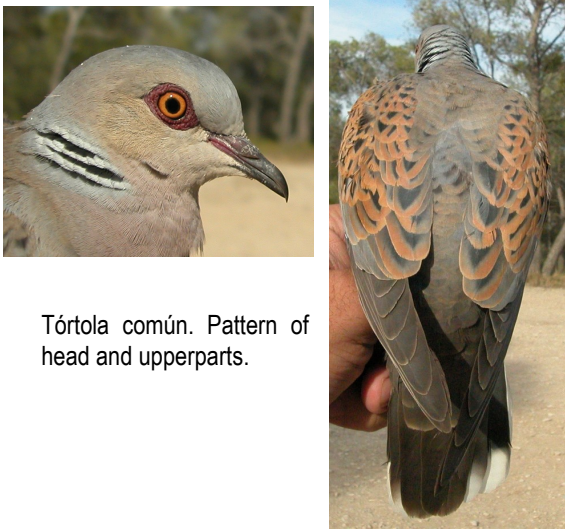
Collared Dove

Turtle Dove. Adult. Female (22-VI).

EUROPEAN TURTLE DOVE (*Streptopelia turtur*)

IDENTIFICATION

26-29 cm. Pale brown upperparts, more grey on the rump; grey and blue-pinkish underparts; wing coverts fringed rufous with black centre; black tail with white edges; grey head and neck; black and white collar on neck; reddish iris and legs.



Tórtola común. Pattern of head and upperparts.

SEXING

Male with intense bluish grey crown and nape; salmon pink breast. **Female** with grey crown tipped sandy brown; buff grey forehead; brown nape with the same colour than mantle; pinkish breast tinged buff (**CAUTION:** some birds cannot be sexed since these differences are not always evident). **Juveniles** cannot be sexed using plumage pattern.



Turtle Dove. Sexing. Pattern of head: top male; bottom female.

SIMILAR SPECIES

Similar in size to **Collared Dove**, which has a different collar pattern and wing coverts without rufous fringes.



Turtle Dove. Sexing. Pattern of nape: left male; right female.



Turtle Dove. Sexing. Pattern of crown: left male; right female.



Turtle Dove. Sexing. Pattern of breast: left male; right female.

AGEING

3 age groups can be recognized:

Juvenile with lesser and median coverts rufous grey with pale terminal fringes; coverts under alula with brown-rufous tips; neck without black and white collar; pale grey or pinkish legs; brown iris.

2nd year only if some **juvenile** secondary or primary retained, shorter and browner than neighbouring feathers; sometimes with some coverts under alula with brown-rufous tips.

Adult with lesser and median coverts black with rufous fringes; bluish coverts under alula without buff tips; flight feathers with the same age; neck with black and white collar; orange legs; orange red iris.



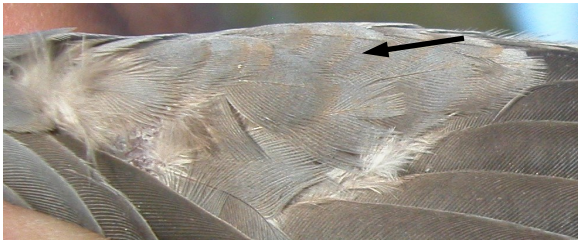
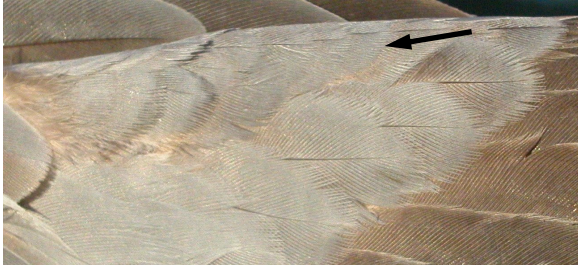
Turtle Dove. Ageing. Colour of legs: left adult; right juvenile.



Turtle Dove. Ageing. Pattern of neck and colour of iris: top adult; bottom juvenile.



Turtle Dove. Ageing. Pattern of wing coverts: top adult; bottom juvenile.



Turtle Dove. Ageing. Pattern of coverts under alula: top adult; middle 2nd year; bottom juvenile.



Turtle Dove. Adult. Male (07-VI).



Turtle Dove . Juvenile (14-VII).

MOULT

Complete **postbreeding** and **postjuvenile** moults, starting between August and September (some **adults** in July), usually suspended before migration and finished in wintering sites. Some **juvenile** birds can retain wing coverts under alula and some central secondaries and/or primaries.

PHENOLOGY

I	II	III	IV	V	VI	VII	VIII	IX	X	XI	XII

- Summer visitor
- Wintering
- Resident
- On passage



Turtle Dove. Head pattern and iris colour: top male (07-VI); middle female (22-VI); bottom juvenile (14-VII).

06870 European Turtle Dove (*Streptopelia turtur*)



Turtle Dove. Legs pattern: left adult (21-V); right juvenile (29-VII).



Turtle Dove. Breast pattern: top left male (21-V); top right female (21-V); left juvenile (14-VII)..



Turtle Dove. Crown pattern: top left male (07-VI); top right female (21-V); left juvenile (29-VII).



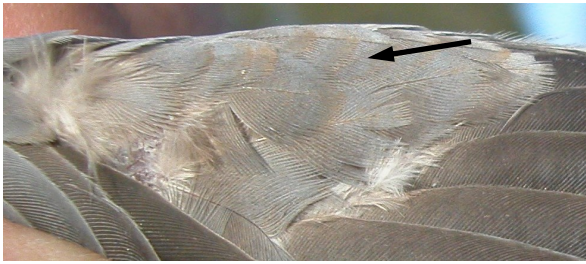
Turtle Dove. Upperparts pattern: left adult (25-V); right juvenile (24-VII).



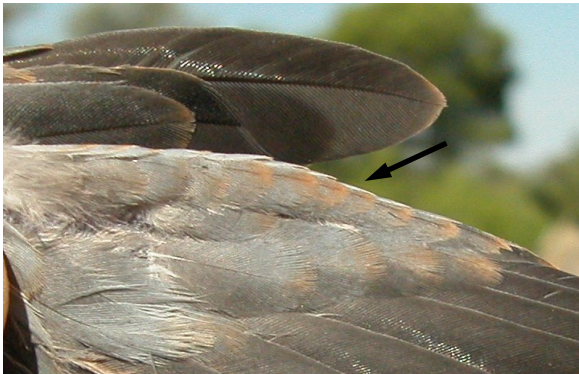
Turtle Dove. Nape pattern: top left male (25-V); top right female (25-V); left juvenile (29-VII)..



Turtle Dove. Adult: pattern of coverts under alula (25-V).



Turtle Dove. 2nd year: pattern of coverts under alula (12-VII).



Turtle Dove. Juvenile: pattern of coverts under alula (29-VII).



Turtle Dove. Adult: pattern of secondaries (25-V).



Turtle Dove. 2nd year: pattern of secondaries (1 juvenile feather) (14-VII).



Turtle Dove. Juvenile: pattern of secondaries (14-VII).



Turtle Dove. Adult: pattern of wing (25-V).



Turtle Dove. 2nd year: pattern of wing (1 juvenile feather) (14-VII).



Turtle Dove. Juvenile: pattern of wing (14-VII).