



Stock Dove. Spring. Male (28-IV)

STOCK DOVE (*Columba oenas*)

IDENTIFICATION

30-33 cm. **Adult** with bluish grey plumage, lacking white on wing or rump; wing with two black bands; green and purple patch on neck; grey tail with two terminal bands; reddish legs; red bill with yellow tip. **Juvenile** without green and purple patch on neck.



Stock Dove. Pattern of rump, underwing coverts and wing.

SIMILAR SPECIES

Recalls a **Feral Pigeon/Rock Dove** which have white rump and underwing coverts. **Wood Pigeon** has a bigger size and has a white transverse band on wings.



Feral Pigeon



Wood Pigeon

SEXING

Male with bluish grey mantle, tertials and scapulars. **Female** with brownish grey mantle, tertials and scapulars (**CAUTION:** with worn plumage both sexes are difficult to separate). **Juveniles** cannot be sexed using plumage pattern.



Stock Dove. Sexing. Pattern of iridescent patch on neck: top male; bottom female.



Stock Dove. Sexing. Pattern of upperparts: left male; right female.



Stock Dove. Sexing. Pattern of scapulars: left male; right female.

AGEING

4 age groups can be recognized:

Juvenile without iridescence on neck; mantle feathers, wing coverts and tertials brownish; light brownish primary coverts; pinkish legs.

1st year autumn recognized till moult is completed by unmoulted flight and tail feathers only slightly worn.

1st year autumn/2nd year spring only birds with suspended moult, which have pale brown **juvenile** outer primary coverts.

Adult with iridescence on neck; mantle feathers, wing coverts and tertials bluish-grey; greyish black primary coverts; reddish legs. In **autumn** recognizable till moult is completed by very worn unmoulted flight and tail feathers. In **spring**, birds with suspended moult can be recognized by their greyish black primary coverts.



Stock Dove. Ageing. Pattern of head and neck: top adult; bottom juvenile.

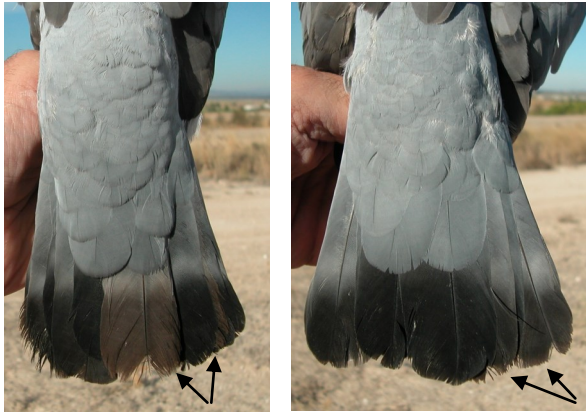


Stock Dove. Ageing. Pattern of legs: top adult; bottom juvenile.



Stock Dove. Ageing. Pattern of primary coverts: top adult; bottom juvenile.





Stock Dove. Autumn. Ageing. Wear of un-moulted tail feathers: left adult; right 1st year.



Stock Dove. Autumn. Ageing. Wear of un-moulted secondaries: top adult; bottom 1st year.



Stock Dove. Autumn. Ageing. Wear of un-moulted primaries: top adult; bottom 1st year.



Stock Dove. Autumn. Ageing. Wear of wing feathers: top adult; bottom 1st year.

MOULT

Complete **postbreeding** and **postjuvenile** moults, usually finished in December (later in late brood **juveniles**). Both age classes, more frequent in **juvenile** birds, may arrested wing moult and have unmoulted flight feathers.

PHENOLOGY

I	II	III	IV	V	VI	VII	VIII	IX	X	XI	XII

- Summer visitor ■ Resident
- Wintering ■ On passage



Stock Dove. Spring. Female (17-V).



Stock Dove. Spring. 2nd year. Male ().



Stock Dove. Spring. 2nd year. Female ().



Stock Dove. Spring. Juvenile (26-VII)



Stock Dove. Spring. Adult. Head pattern: top male (02-VI); bottom female (17-V).

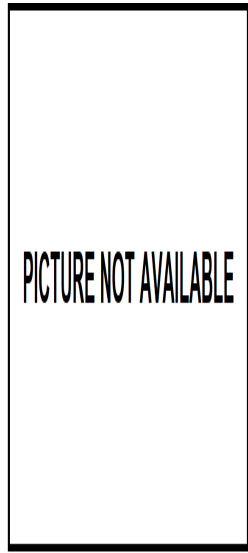
06680 Stock Dove (*Columba oenas*)



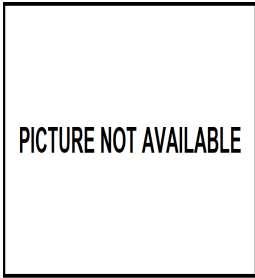
Stock Dove. Spring. Head pattern: top 2nd year male (08-V); middle 2nd year female (); bottom juvenile (26-VII).



Stock Dove. Spring. Adult. Uppepart pattern: left male (02-VI); right female (17-V).



Stock Dove. Spring. Adult. Breast pattern: left male (02-VI); right female (17-V).



Stock Dove. Spring. Breast pattern: top left 2nd year male (08-V); top right 2nd year female (); left juvenile (06-VI).



Stock Dove. Spring. Upperpart pattern: top left 2nd year male (08-V); top right 2nd year female (); left juvenile (06-VI).

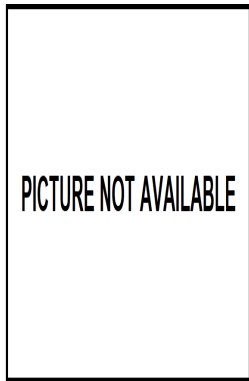
06680 Stock Dove (*Columba oenas*)



Stock Dove. Spring. Legs pattern: top adult (17-V); bottom juvenile (06-VI).



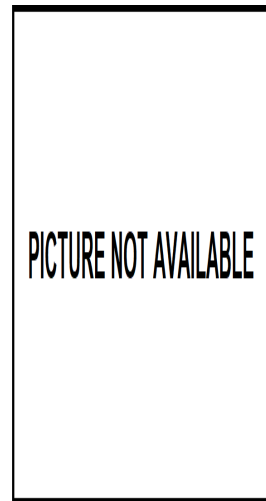
Stock Dove. Spring. Adult. Tail pattern: left male (02-VI); right female (17-V).



Stock Dove. Spring. Tail pattern: top left 2nd year male (08-V); top right 2nd year female (); left juvenile (26-VII).



Stock Dove. Spring. Adult. Pattern of tertials: left male (02-VI); right female (17-V).



Stock Dove. Spring. Pattern of scapulars: top left 2nd year male (08-V); top right 2nd year female (); left juvenile (06-VI).



Stock Dove. Spring. Adult. Male: pattern of primary covers (02-VI).



Stock Dove. Spring. 2nd year. Female: pattern of primary covers ().



Stock Dove. Spring. Adult. Female: pattern of primary covers (17-V).



Stock Dove. Spring. Juvenile: pattern of primary covers (26-VII)



Stock Dove. Spring. 2nd year. Male: pattern of primary covers (08-V).



Stock Dove. Spring. Adult. Male: pattern of primaries (02-VI).

06680 Stock Dove (*Columba oenas*)



Stock Dove. Spring. Adult. Female: pattern of primaries (17-V).



Stock Dove. Spring. 2nd year. Male: pattern of primaries (08-V).

PICTURE NOT AVAILABLE

Stock Dove. Spring. 2nd year. Female: pattern of primaries ().



Stock Dove. Spring. Juvenile: pattern of primaries (26-VII).



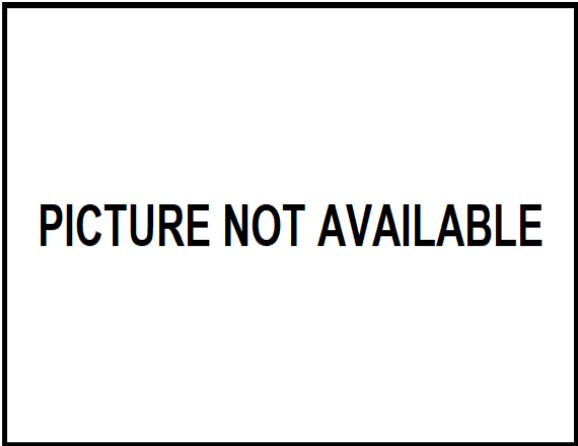
Stock Dove. Spring. Adult. Male: pattern of secondaries (02-VI).



Stock Dove. Spring. Adult. Female: pattern of secondaries (17-V).



Stock Dove. Spring. 2nd year. Male: pattern of secondaries (no. 1: juvenile feathers) (08-V)



Stock Dove. Spring. 2nd year. Female: pattern of secondaries ()



Stock Dove. Spring. Juvenile: pattern of secondaries (06-VI)



Stock Dove. Spring. Adult. Male: pattern of wing (28-IV)



Stock Dove. Spring. Adult. Female: pattern of wing (17-V)



Stock Dove. Spring. 2nd year. Male: pattern of wing (no. 1: juvenile feathers) (08-V)



Stock Dove. Spring. 2nd year. Female: pattern of wing ()



Stock Dove. Spring. Juvenile: pattern of wing (28-IV)

06680 Stock Dove (*Columba oenas*)



Stock Dove. Autumn. Adult (28-X)



Stock Dove. Autumn. 1st year (28-X)



Stock Dove. Autumn. Head pattern: top adult (28-X); bottom 1st year (28-X).



Stock Dove. Autumn. Breast pattern: left adult (28-X); right 1st year (28-X).

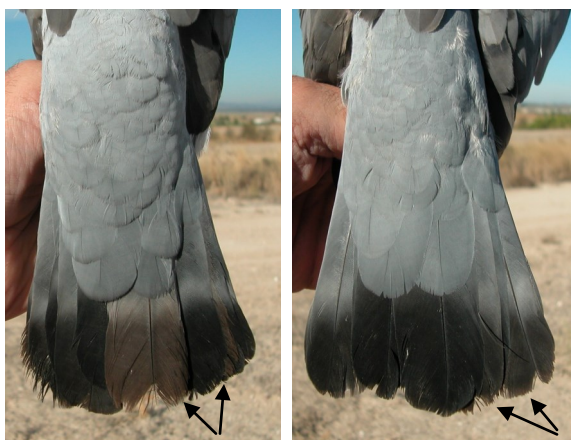


Stock Dove. Autumn. Upperpart pattern: left adult (28-X); right 1st year (28-X).



Stock Dove. Autumn. Colour of legs: top adult (28-X); bottom 1st year (28-X).

06680 Stock Dove (*Columba oenas*)



Stock Dove. Autumn. Tail pattern: left adult (28-X); right 1st year (28-X).



Stock Dove. Autumn. Pattern of tertials: left adult (28-X); right 1st year (28-X).



Stock Dove. Autumn. Adult: pattern of primary covers (28-X).



Stock Dove. Autumn. 1st year: pattern of primary covers (28-X).



Stock Dove. Autumn. Adult: pattern of primaries (28-X).



Stock Dove. Autumn. 1st year: pattern of primaries (28-X).



Stock Dove. Autumn. 1st year: pattern of secondaries (28-X).



Stock Dove. Autumn. Adult: pattern of wing (28-X).

Stock Dove. Autumn. Adult: pattern of secondaries (28-X).



Stock Dove. Autumn. 1st year: pattern of wing (28-X).