

## 259 Feral Pigeon/Rock Dove

Put your logo here



Feral Pigeon. Adult. Male (13-XI).

### FERAL PIGEON/ROCK DOVE (*Columba livia*)

#### IDENTIFICATION

30-36 cm. **Feral Pigeons** are originated from wild **Rock Doves** having much of their plumage characters: grey plumage, green and purple iridescence on neck, two black bands on wing, white rump and white underwing coverts. In any case plumage variation in **Feral Pigeon** is very vast.



Stock Dove



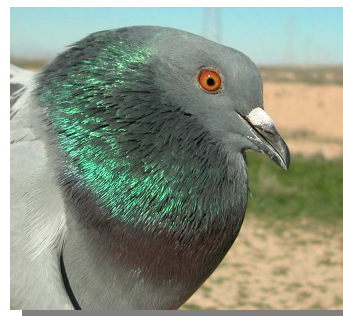
Wood Pigeon



Feral Pigeon. Pattern of rump, underwing coverts and wing.

#### SEXING

Plumage of both sexes alike. **Male** is usually bigger than **female**, but this is not an useful character with individual birds due to overlap.



Feral Pigeon. Sexing. Pattern of head: top male; bottom female.

#### SIMILAR SPECIES

Recalls a **Stock Dove** which lacks white rump and has grey underwing coverts. **Wood Pigeon** is bigger and has a white transverse band on wings.

## 259 Feral Pigeon/Rock Dove

Put your logo here

### AGEING

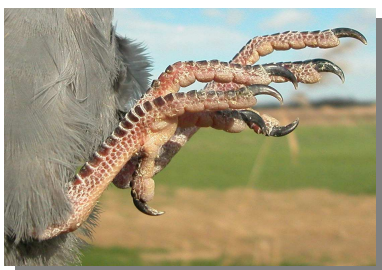
2 types of age can be recognized:

**Juvenile** without iridescence on neck; off-white cere; pinkish legs; brown iris.

**Adult** with iridescence on neck; white cere; reddish legs; orange iris.



Feral Pigeon. Ageing. Pattern of head and colour of bill and iris: top adult; bottom juvenile.



Feral Pigeon. Ageing. Colour of legs: top adult; bottom juvenile.

### PHENOLOGY

I	II	III	IV	V	VI	VII	VIII	IX	X	XI	XII

### STATUS IN ARAGON

**Rock Dove** is a resident species related to cliffs in mountainous areas. **Feral Pigeon** is widespread in villages and cities.



Feral Pigeon. Adult. Female (13-XI).



Feral Pigeon. Juvenile (25-II).

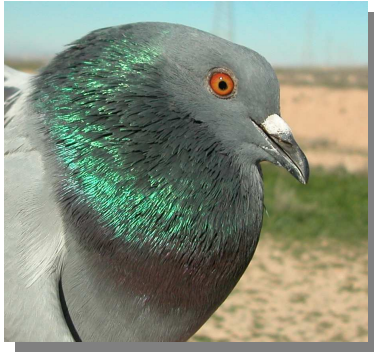
### MOULT

Complete **postbreeding** and **postjuvenile** moults. Moults in **adults** is usually finished in November-December. Moults of **juveniles** related to fledging date, so it is possible to find moulting birds in any month of the year.



# 259 Feral Pigeon/Rock Dove

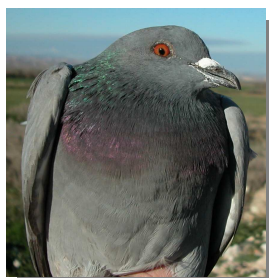
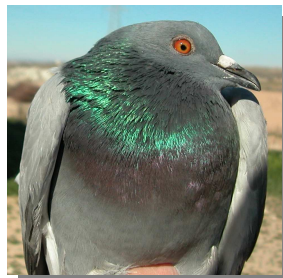
Put your logo here



Feral Pigeon. Head pattern and color of iris and bill: top adult male (9-II); middle adult female (9-II); bottom juvenile (25-II).



Feral Pigeon. Upperpart pattern: top left adult male (9-II); top right adult female (9-II); left juvenile (25-II).



Feral Pigeon. Breast pattern: top left adult male (9-II); top right adult female (9-II); left juvenile (25-II).

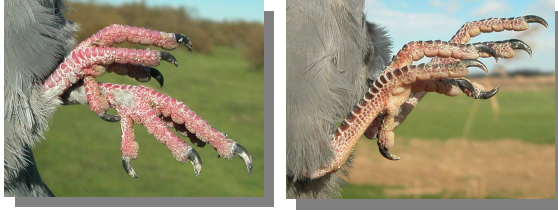


Feral Pigeon. Tail pattern: top left adult male (9-II); top right adult female (9-II); left juvenile (25-II).



## 259 Feral Pigeon/Rock Dove

[Put your logo here](#)



Feral Pigeon. Legs pattern: left adult (13-XI); right juvenile (25-II).



Feral Pigeon. Adult. Male: pattern of secondaries (9-II).



Feral Pigeon. Adult. Male: pattern of primaries (9-II).



Feral Pigeon. Adult. Female: pattern of secondaries (9-II).



Feral Pigeon. Adult. Female: pattern of primaries (9-II).



Feral Pigeon. Juvenile: pattern of secondaries (25-II).



Feral Pigeon. Juvenile: pattern of primaries (25-II).

## 259 Feral Pigeon/Rock Dove

[Put your logo here](#)



Feral Pigeon. Adult. Male: pattern of wing (9-II)



Feral Pigeon. Adult. Female: pattern of wing (9-II)



Feral Pigeon. Juvenile: pattern of wing (25-II)