

# 257 Pin-tailed Sandgrouse

Put your logo here



Pin-tailed Sandgrouse. Summer. Adult. Male (17-VII).

**PIN-TAILED SANDGROUSE** (*Pterocles alchata*)

## IDENTIFICATION

30-32 cm. In **breeding** plumage, **male** with upperparts with yellow spots; rump with black and yellow streaks; yellowish head with black throat; breast with a chestnut band with black edges. **Female** with yellowish upperparts with transversal black, chestnut and grey streaks; white throat. Both sexes with white belly.

## SIMILAR SPECIES

Recalls a **Black-bellied Sandgrouse**, with black belly.

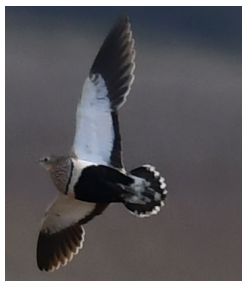


Photo: José Antonio Pinzolas

## SEXING

In **breeding** plumage, **male** with intense chestnut on breast and sides of head; black bib; grey-greenish upperparts with yellow spots; breast with a dark line; inner secondaries without barred; brown and grey greater coverts with yellow and black lines. **Female** with pale chestnut on breast and sides of head; white bib; upperparts with yellow, grey and black bars; breast with two dark lines; inner secondaries barred; yellow and grey greater coverts with dark lines. In **non breeding** plumage, **male** similar to **female**, but with different pattern on wing coverts. **Juveniles** cannot be sexed using plumage pattern till autumn, when the first wing coverts are growing.

## AGEING

3 age groups can be recognized:

**Juvenile** with a pale stripe behind the eye; buff upperparts and wing coverts with cream edge and a brown line “V” shaped; short central tail feathers; primary coverts with pale tips.

**1st year autumn/2nd year spring** similar to **adult**, but with the **juvenile** three outermost primaries and their primary coverts unmoulted; retained primaries more decolored and pointed than the neighbouring feathers; retained primary coverts with white tips.

**Adult** without a pale stripe behind the eye; upperparts and wing coverts without brown line “V” shaped; very long central tail feathers; primary coverts without pale tips.

## MOULT

Complete **postbreeding** moult, usually finished in October, acquiring **non breeding** plumage. Quite complete **postjuvenile** moult, including all feathers except the outermost three primaries and their primary coverts. Both age classes have a **prebreeding** moult, between November and March, involving body feathers to acquire the **breeding** plumage.

## PHENOLOGY

I	II	III	IV	V	VI	VII	VIII	IX	X	XI	XII

## STATUS IN ARAGON

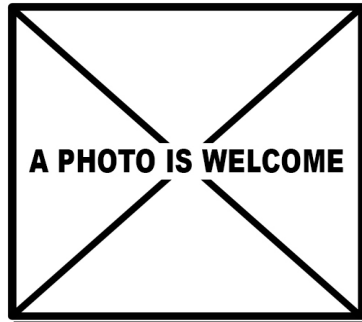
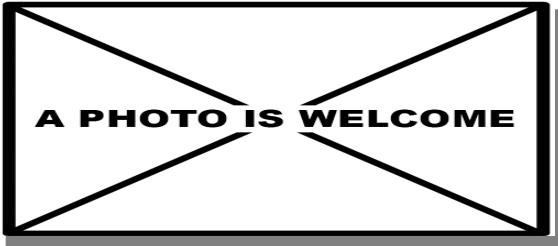
Resident. Breeds in the most arid areas of the Ebro Basin.



Pin-tailed Sandgrouse. Summer. Adult. Female (17-VII).

# 257 Pin-tailed Sandgrouse

Put your logo here



Pin-tailed Sandgrouse. Summer. 2nd year. Male ().



Pin-tailed Sandgrouse. Summer. Head pattern: top 2nd year male (); middle 2nd year female (17-VII); bottom juvenile (17-VII).

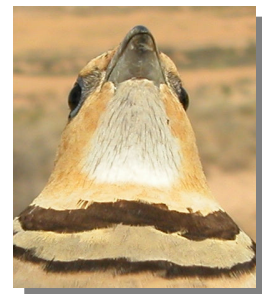
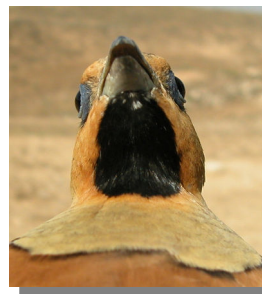
Pin-tailed Sandgrouse. Summer. 2nd year. Female (17-VII).



Pin-tailed Sandgrouse. Summer. Juvenile (17-VII).



Pin-tailed Sandgrouse. Summer. Adult. Head pattern: top male (17-VII); bottom female (17-VII).

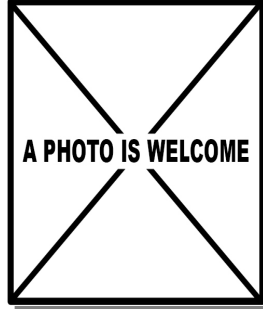
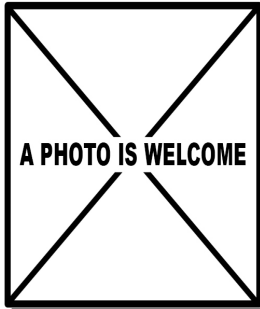


Pin-tailed Sandgrouse. Summer. Adult. Bib pattern: left male (17-VII); right female (17-VII).



# 257 Pin-tailed Sandgrouse

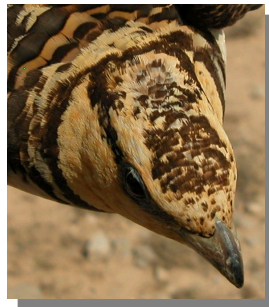
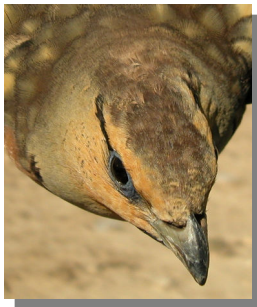
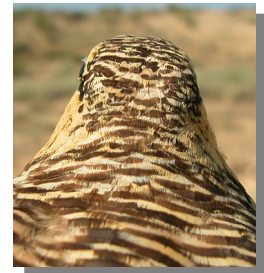
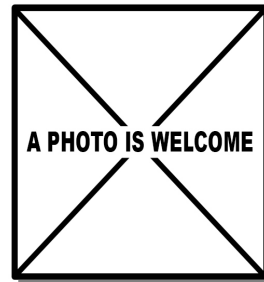
Put your logo here



Pin-tailed Sandgrouse. Summer. Adult. Nape pattern: left male (17-VII); right female (17-VII).

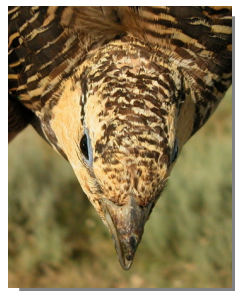


Pin-tailed Sandgrouse. Summer. Bib pattern: top left 2nd year male (); top right 2nd year female (); bottom juvenile (17-VII).

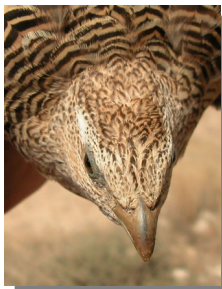


Pin-tailed Sandgrouse. Summer. Nape pattern: top left 2nd year male (); top right 2nd year female (17-VII); bottom juvenile (17-VII).

Pin-tailed Sandgrouse. Summer. Adult. Crown pattern: left male (17-VII); right female (17-VII).



Pin-tailed Sandgrouse. Summer. Adult. Breast pattern: left male (17-VII); right female (17-VII).



Pin-tailed Sandgrouse. Summer. Crown pattern: top left 2nd year male (); top right 2nd year female (17-VII); bottom juvenile (17-VII).

# 257 Pin-tailed Sandgrouse

Put your logo here



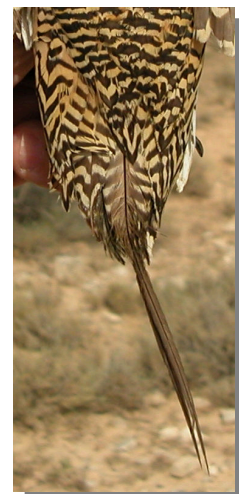
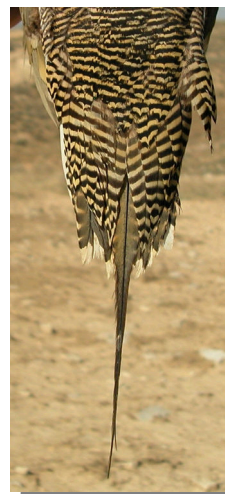
Pin-tailed Sandgrouse. Summer. Breast pattern: top left 2nd year male (); top right 2nd year female (17-VII); bottom juvenile (17-VII).



Pin-tailed Sandgrouse. Summer. Adult. Upperparts pattern: left male (17-VII); right female (17-VII).



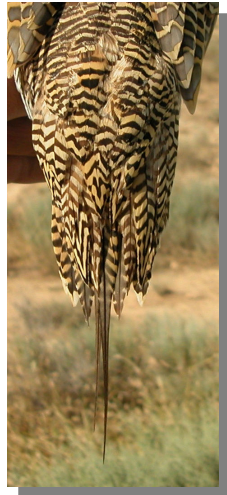
Pin-tailed Sandgrouse. Summer. Upperparts pattern: top left 2nd year male (); top right 2nd year female (17-VII); bottom juvenile (17-VII).



Pin-tailed Sandgrouse. Summer. Adult. Tail pattern: left male (17-VII); right female (17-VII).

# 257 Pin-tailed Sandgrouse

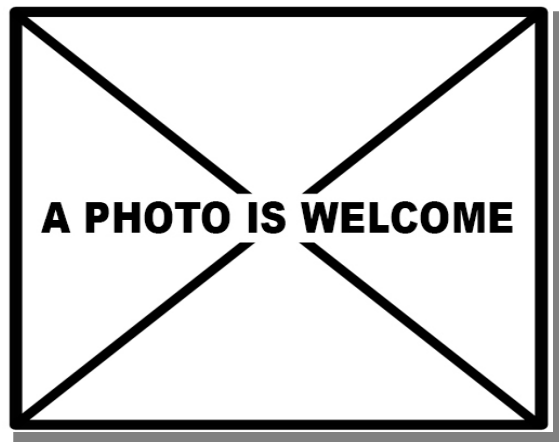
Put your logo here



Pin-tailed Sandgrouse. Summer. Adult. Female: pattern of primary coverts (17-VII).



Pin-tailed Sandgrouse. Summer. Tail pattern: top left 2nd year male (); top right 2nd year female (17-VII); bottom juvenile (17-VII).



Pin-tailed Sandgrouse. Summer. 2nd year. Male: pattern of primary coverts ().



Pin-tailed Sandgrouse. Summer. Adult. Male: pattern of primary coverts (17-VII).



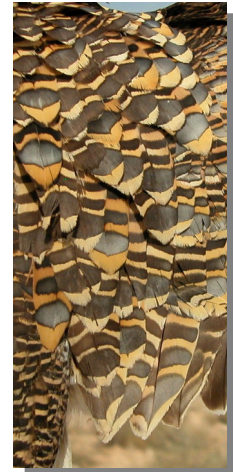
Pin-tailed Sandgrouse. Summer. 2nd year. Female: pattern of primary coverts (17-VII).

# 257 Pin-tailed Sandgrouse

Put your logo here



Pin-tailed Sandgrouse. Summer. Juvenile: pattern of primary coverts (17-VII).



Pin-tailed Sandgrouse. Summer. Adult. Pattern of scapulars and tertials: left male (17-VII); right female (17-VII).



Pin-tailed Sandgrouse. Summer. Adult. Male: pattern of primaries (17-VII).



Pin-tailed Sandgrouse. Summer. Pattern of scapulars and tertials: top left 2nd year male (); top right 2nd year female (17-VII); left juvenile (17-VII).

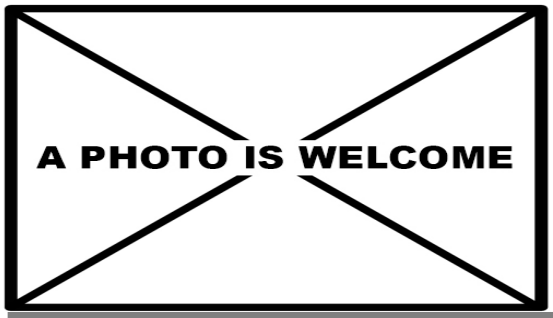
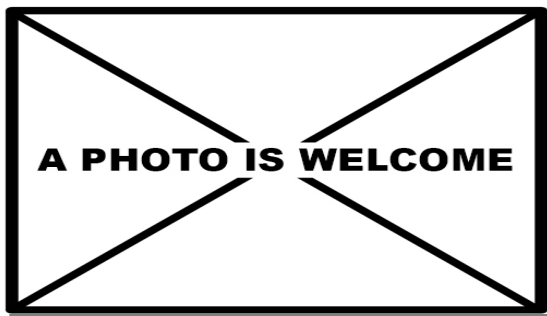
# 257 Pin-tailed Sandgrouse

Put your logo here



Pin-tailed Sandgrouse. Summer. Adult. Female: pattern of primaries (17-VII).

Pin-tailed Sandgrouse. Summer. 2nd year. Female: pattern of primaries (17-VII).

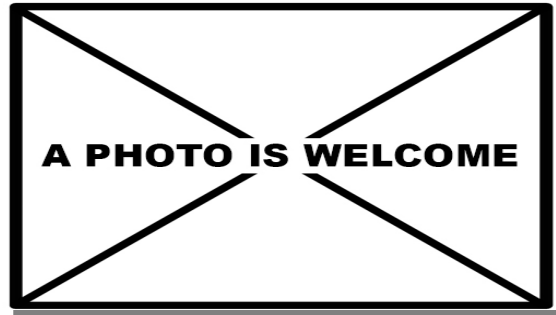
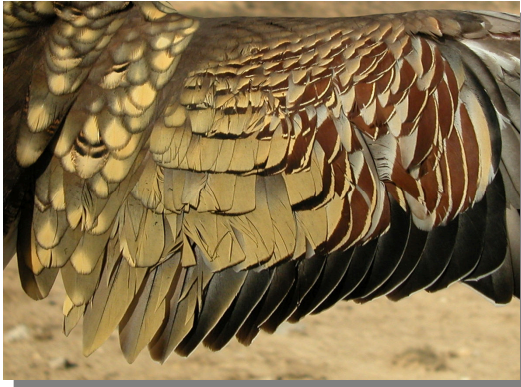


Pin-tailed Sandgrouse. Summer. 2nd year. Male: pattern of primaries ().

Pin-tailed Sandgrouse. Summer. Juvenile: pattern of primaries (17-VII).

# 257 Pin-tailed Sandgrouse

Put your logo here



Pin-tailed Sandgrouse. Summer. 2nd year. Male: pattern of secondaries ().

Pin-tailed Sandgrouse. Summer. Adult. Male: pattern of secondaries (17-VII).



Pin-tailed Sandgrouse. Summer. Adult. Female: pattern of secondaries (17-VII).

Pin-tailed Sandgrouse. Summer. 2nd year. Female: pattern of secondaries (17-VII).

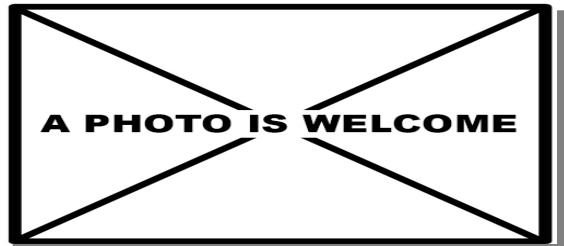
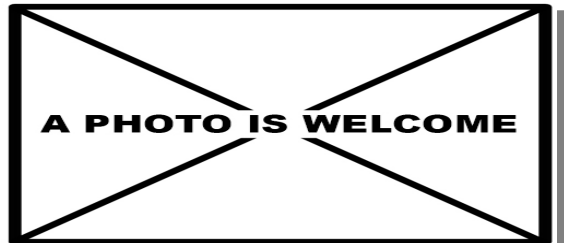


# 257 Pin-tailed Sandgrouse

Put your logo here



Pin-tailed Sandgrouse. Summer. Adult. Female: pattern of wing (17-VII).



Pin-tailed Sandgrouse. Summer. Juvenile: pattern of secondaries (17-VII).



Pin-tailed Sandgrouse. Summer. 2nd year. Male: pattern of wing ().



Pin-tailed Sandgrouse. Summer. Adult. Male: pattern of wing (17-VII).



Pin-tailed Sandgrouse. Summer. 2nd year. Female: pattern of wing (17-VII).

## 257 Pin-tailed Sandgrouse

Put your logo here



Pin-tailed Sandgrouse. Summer. Juvenile: pattern of wing (17-VII).