

**05640 Red-necked Phalarope** (*Phalaropus lobatus*)

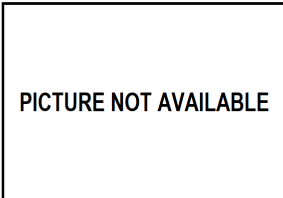


Red-necked Phalarope. Autumn. Juvenile (13-IX).

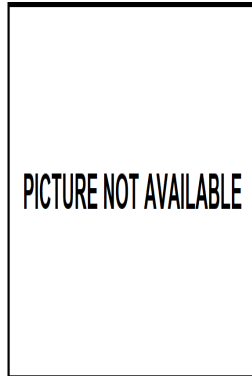
**RED-NECKED PHALAROPE** (*Phalaropus lobatus*)

**IDENTIFICATION**

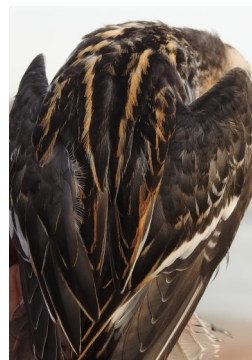
10-19 cm. In **breeding** plumage, crown, cheeks, back of neck, breast sides and mantle greyish; throat and small spot above eye white; with variable amount of red on sides of neck. In **non-breeding** plumage greyish above with distinct whitish mantle-V and scapular fringes. **Juvenile** with prominent ochrous-ruff on both mantle and scapulars, a solid dark cap and a light pinkish tinge on neck/breast sides. All ages with thin bill.



Red-necked Phalarope. Autumn. Adult. Pattern of head and mantle.



Red-necked Phalarope. Autumn. Juvenile. Pattern of head and mantle.

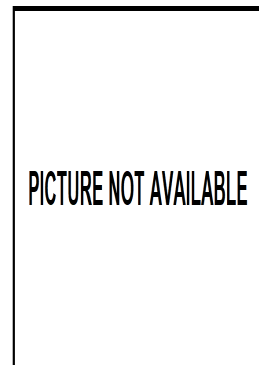


**SIMILAR SPECIES**

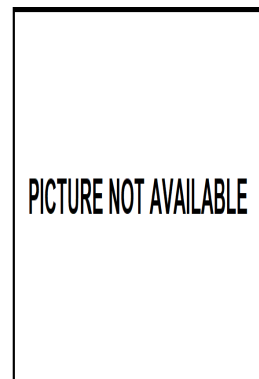
Recalls a **Red Phalarope**, with reddish body feathers in **breeding** plumage; in **non-breeding** plumage with almost plain pale grey upperparts and wings and dark bordered white crown. **Juveniles** without prominent ochrous-ruff feathers on mantle. All ages with broad bill.



Red Phalarope. Autumn. Adult. Pattern of head and mantle.



Red Phalarope. Autumn. Juvenile. Pattern of head and mantle.



**SEXING**

It is not probable to find this species with **breeding** plumage in Aragon. In **non-breeding** plumage both sexes alike.

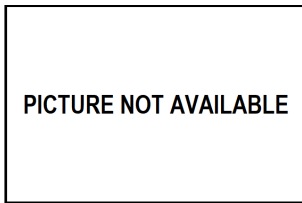
**AGEING**

Since this species doesn't breed in Aragon only 2 age groups can be recognized:

**Juvenile** with dark brown crown and nape; blackish brown mantle; broad golden-buff edge on scapulars; underparts whitish with pinkish tinge on neck and sides of throat.

**Adult** in **autumn** with ash-grey hindcrown and central line of nape; blue-grey mantle; clear white edge on scapulars; white underparts.

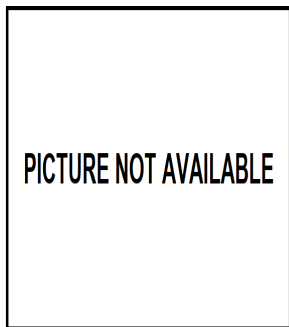
**05640 Red-necked Phalarope** (*Phalaropus lobatus*)



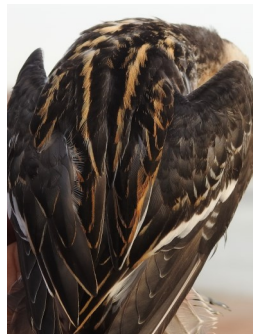
PICTURE NOT AVAILABLE



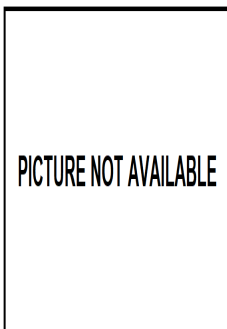
Red-necked Phalarope. Ageing. Autumn. Head pattern: top adult; bottom juvenile.



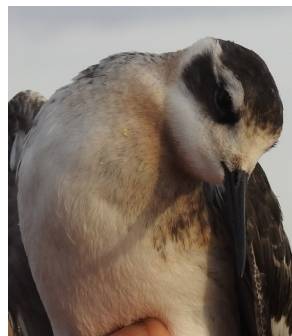
PICTURE NOT AVAILABLE



Red-necked Phalarope. Ageing. Autumn. Pattern of mantle: left adult; right juvenile.



PICTURE NOT AVAILABLE



Red-necked Phalarope. Ageing. Autumn. Pattern of breast: left adult; right juvenile.

**MOULT**

Complete **postbreeding** moult, starting early in breeding places. Partial **postjuvenile** moult starting during postbreeding migration or delayed until arriving in winterish sites. Both age classes have a **prebreeding** moult being complete in **2nd year** birds which return back to breeding places and **partial**, involving body feathers, in **adults**.

**PHENOLOGY**

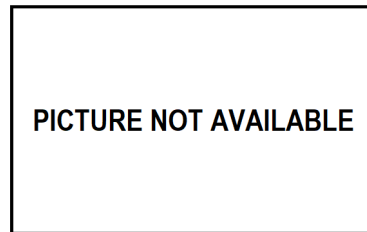
I	II	III	IV	V	VI	VII	VIII	IX	X	XI	XII

- Summer visitor
- Wintering
- Resident
- On passage



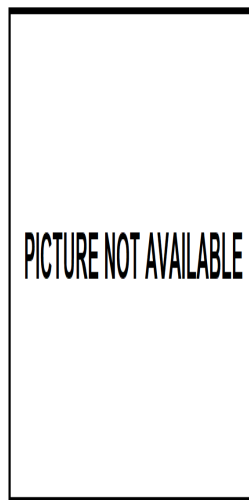
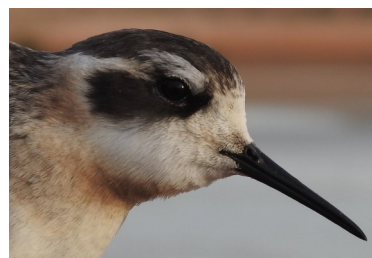
PICTURE NOT AVAILABLE

Red-necked Phalarope. Autumn. Adult ().

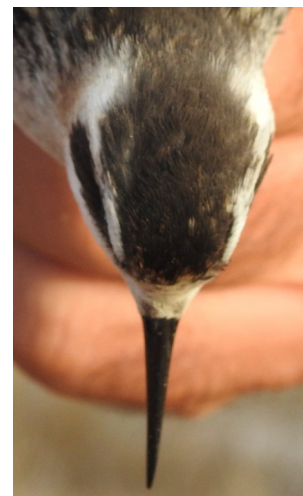


PICTURE NOT AVAILABLE

Red-necked Phalarope. Autumn. Head pattern: top adult (); bottom juvenile (13-IX).



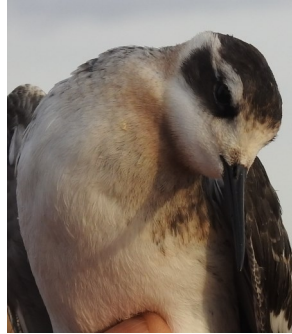
PICTURE NOT AVAILABLE



Red-necked Phalarope. Autumn. Crown pattern: left adult (); right juvenile (13-IX).

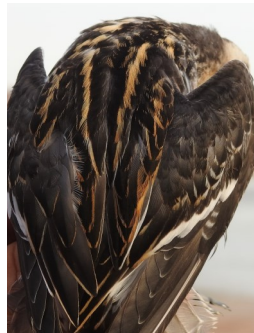
**05640 Red-necked Phalarope** (*Phalaropus lobatus*)

PICTURE NOT AVAILABLE



Red-necked Phalarope. Autumn. Breast pattern: left adult (); right juvenile (13-IX).

PICTURE NOT AVAILABLE



Red-necked Phalarope. Autumn. Upperparts pattern: left adult (); right juvenile (13-IX).

PICTURE NOT AVAILABLE



Red-necked Phalarope. Autumn. Tail pattern: left adult (); right juvenile (13-IX).

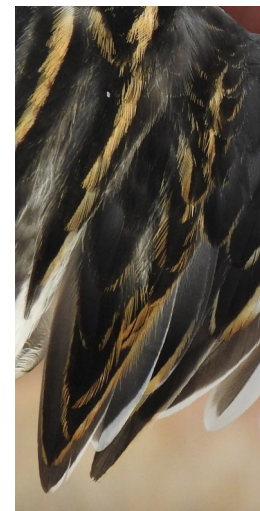
PICTURE NOT AVAILABLE

Red-necked Phalarope. Autumn. Adult: pattern of primary coverts ().



Red-necked Phalarope. Autumn. Juvenile: pattern of primary coverts (13-IX).

PICTURE NOT AVAILABLE



Red-necked Phalarope. Autumn. Pattern of tertials: left adult (); right juvenile (13-IX).

PICTURE NOT AVAILABLE



Red-necked Phalarope. Autumn. Legs pattern: top adult (); bottom juvenile (13-IX).

**PICTURE NOT AVAILABLE**



Red-necked Phalarope. Autumn. Juvenile: pattern of primaries (13-IX).

Red-necked Phalarope. Autumn. Adult: pattern of secondaries ().



**PICTURE NOT AVAILABLE**

Red-necked Phalarope. Autumn. Adult: pattern of wing ().

Red-necked Phalarope. Autumn. Juvenile: pattern of secondaries(13-IX).



**PICTURE NOT AVAILABLE**

Red-necked Phalarope. Autumn. Juvenile: pattern of wing (13-IX).

Red-necked Phalarope. Autumn. Adult: pattern of primaries ().