



Greenshank. Spring. Adult (04-V).

**COMMON GREENSHANK** (*Tringa nebularia*)

**IDENTIFICATION**

30-31 cm. In **winter** with grey mantle and white low upperparts; white underparts with mottled breast; white and barred tail; brown wings with small white tips on coverts; bill long and slightly upturned; greenish legs.



Greenshank. Pattern of bill and legs.

**SIMILAR SPECIES**

Unmistakable due to slightly upturned bill and greenish legs.

**SEXING**

Plumage of both sexes alike.

**AGEING**

This species doesn't breed in Aragon, so only 3 age groups can be recognized:

**1st year autumn** retaining much of the **juvenile** plumage with dark brown feathers on upperparts broadly edged buff-brown; wing coverts with distinct pale edge; median coverts with broad buff fringes interrupted centrally by a brown wedge; central tail feathers fresh with thin brown bars.

**2nd year spring** similar to **adults**, but identifiable if there are unmoulted **juvenile** wing coverts which will be very worn; unmoulted primaries very worn; unmoulted outer tail feathers heavily worn contrasting with fresh inner ones.

(**Note:** age not represented with photographs).

**Adult** in **autumn** with greyish upperparts without buff edges; wing coverts without or with indistinct pale edge; median coverts grey without pale edge; central tail feather worn with broad irregular dark brown bars. In **spring** with wing coverts and tertials without strong contrast between retained and moulted feathers; primaries slightly worn; tail feathers with similar wear.



Greenshank. Autumn. Ageing. Pattern of feathers on upperparts: left adult; right 1st year.



Greenshank. Autumn. Ageing. Pattern of wing coverts: left adult; right 1st year.

**MOULT**

Complete **postbreeding** moult, starting in breeding places, suspended during migration and finished in wintering sites (**CAUTION:** some birds start their moult only when arrival to wintering areas). Partial **postjuvenile** moult including body feathers, most scapulars, some tail feathers, inner tertials and some wing coverts; usually started in wintering sites. Both age classes have a **prebreeding** moult including body feathers, some wing coverts and some tertials.

**PHENOLOGY**

I	II	III	IV	V	VI	VII	VIII	IX	X	XI	XII

- Summer visitor
- Resident
- Wintering
- On passage



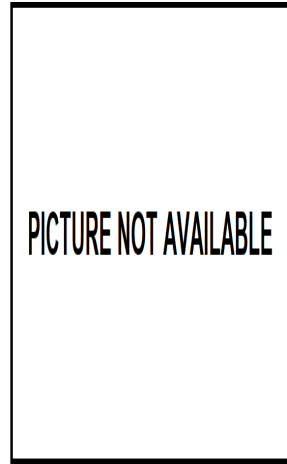
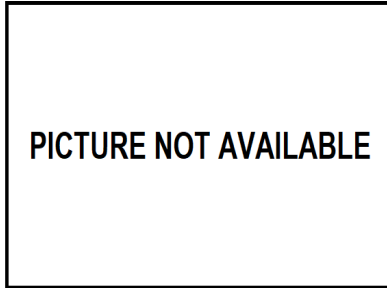
Greenshank. Spring. 2nd year ().



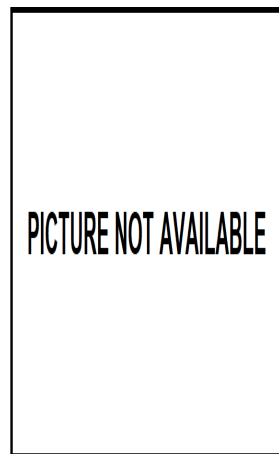
Greenshank. Spring. Head pattern: top adult (04-V); bottom 2nd year ().



Greenshank. Spring. Breast pattern: top adult (04-V); bottom 2nd year ().

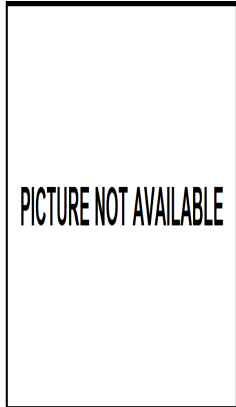


Greenshank. Spring. Upperpart pattern: left adult (04-V); right 2nd year ().



Greenshank. Spring. Tail pattern: left adult (04-V); right 2nd year ().

**05480 Common Greenshank** (*Tringa nebularia*)



Greenshank. Spring. Pattern of tertials: left adult (04-V); right 2nd year ().



Greenshank. Spring. Adult: pattern of wing coverts (04-V).



Greenshank. Spring. 2nd year: pattern of wing coverts ().



Greenshank. Spring. Adult: pattern of primaries (04-V).



Greenshank. Spring. 2nd year: pattern of primaries ().



Greenshank. Spring. Adult: pattern of secondaries (04-V).



Greenshank. Spring. 2nd year: pattern of secondaries ().



Greenshank. Spring. Adult: pattern of wing (04-V).

**05480 Common Greenshank** (*Tringa nebularia*)

**PICTURE NOT AVAILABLE**

**PICTURE NOT AVAILABLE**

Greenshank. Spring. 2nd year: pattern of wing ().



Greenshank. Autumn. Adult (21-VII).



Greenshank. Autumn. 1st year (24-VIII).



Greenshank. Autumn. Head pattern: top adult (21-VII); bottom 1st year (24-VIII).



Greenshank. Autumn. Breast pattern: top adult (21-VII); bottom 1st year (24-VIII).



Greenshank. Autumn. Upperpart pattern: left adult (21-VII); right 1st year (24-VIII).

**05480 Common Greenshank** (*Tringa nebularia*)



Greenshank. Autumn. Legs pattern: top adult (21-VII); bottom 1st year (24-VIII).



Greenshank. Autumn. Pattern of tertials: top left adult poorly moulted (15-VIII); top left adult with large moult (21-VII); left 1st year (24-VIII).



Greenshank. Autumn. Tail pattern: top left adult poorly moulted (21-VII); top left adult with started moult (15-VIII); left 1st year (24-VIII).



Greenshank. Autumn. Adult poorly moulted: pattern of wing coverts (15-VIII).



Greenshank. Autumn. Adult with large moult: pattern of wing coverts (15-VII).



Greenshank. Autumn. 1st year: pattern of wing coverts (24-VIII).



Greenshank. Autumn. Adult poorly moulted: pattern of primaries (15-VIII).



Greenshank. Autumn. Adult with large moult: pattern of primaries (15-VII).



Greenshank. Autumn. 1st year: pattern of primaries (24-VIII).



Greenshank. Autumn. Adult poorly moulted: pattern of secondaries (15-VIII).



Greenshank. Autumn. Adult with large moult: pattern of secondaries (15-VII).



Greenshank. Autumn. Adult with large moult: pattern of wing (15-VII).



Greenshank. Autumn. 1st year: pattern of secondaries (24-VIII).



Greenshank. Autumn. 1st year: pattern of wing (24-VIII).



Greenshank. Autumn. Adult poorly moulted: pattern of wing (15-VIII).

