

202 Common Redshank

Put your logo here

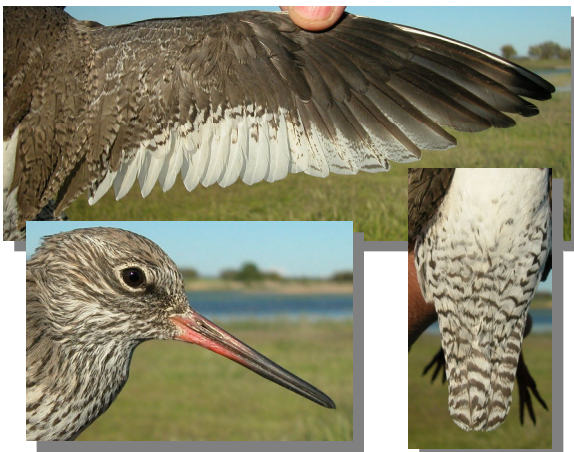


Redshank. Spring. Adult (02-V)

COMMON REDSHANK (*Tringa totanus*)

IDENTIFICATION

27-28 cm. In **spring** with brownish upperparts barred dark; white rump; white tail with dark bars; wings with a broad white band on the edge; white underparts with dark streaks on head, neck and breast; red bill with dark tip; orange-red legs. In **autumn** with darker colours on upperparts: grey tinge on breast.



Redshank. Pattern of wing, tail and bill.

SIMILAR SPECIES

Recalls a **Spotted Redshank** in **autumn**, without a white patch on wings and has a longer bill; **Ruff** has a narrower wing band and two white bands on sides of uppertail



Spotted Redshank. Autumn



Ruff

SEXING

Plumage of both sexes alike.

AGEING

This species is a scarce **breeder** in Aragon, so only 3 age classes can be recognized:

1st year autumn with fresh plumage; median coverts spotted pale on edge; tertials brown with buff and dark marks; pointed tail feathers; breast slightly streaked; dull reddish base of bill; yellowish legs.

2nd year spring similar to **adult**; this age can be recognized only in birds with some unmoulted median wing coverts and/or tertials; flight feathers moderately worn.

Adult with median coverts with whitish edge and dark subterminal band; tertials grey brown with variable markings: either plain or with dark sepia bars, sometimes with extensive dark markings; rounded tail feathers; underparts with variable amount of dark barring and spotting; reddish legs and base of bill.



Redshank. Ageing. Pattern of bill: top adult; bottom 1st year.

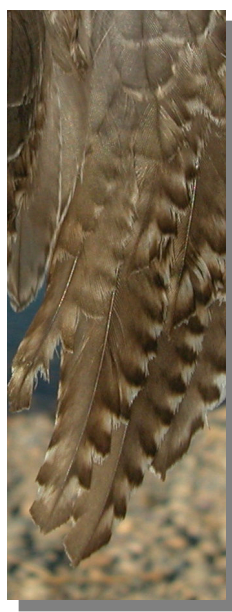
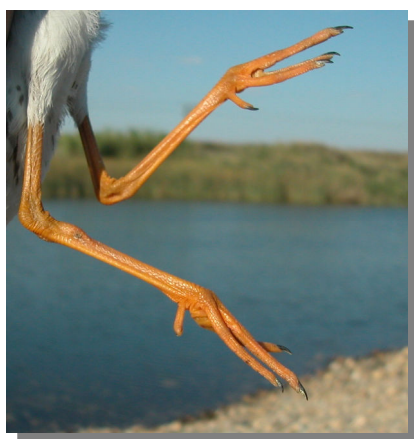


202 Common Redshank

Put your logo here



Redshank.
Ageing.
Pattern of
legs: top
adult; bot-
tom 1st
year.



Redshank. Ageing. Pattern of tertials: left adult in spring; right 1st year.

MOULT

Complete **postbreeding** moult, starting in breeding areas and finished in wintering sites. Partial **postjuvenile** moult involving body feathers, most scapulars, some tail feathers (occasionally all), some tertials and some lesser and median wing coverts; started in breeding areas and finished in wintering quarters. Both age classes have a **prebreeding** moult including all or part of body feathers, some scapulars, tertials, wing coverts and sometimes some tail feathers.

PHENOLOGY

I	II	III	IV	V	VI	VII	VIII	IX	X	XI	XII

STATUS IN ARAGON

Summer visitor with scarce breeding records in Gallocanta and the Ebro Valley. Very common on passage everywhere.



Redshank. Spring. 2nd year (04-V)



Redshank.
Spring.
Head pat-
tern: top
adult (02-
V); bottom
2nd year
(04-V)



202 Common Redshank

Put your logo here



Redshank. Spring. Breast pattern: top adult (02-V); bottom 2nd year (04-V)



Redshank. Spring. Tail pattern: left adult (02-V); right 2nd year (04-V)



Redshank. Spring. Upperpart pattern: left adult (02-V); right 2nd year (04-V)



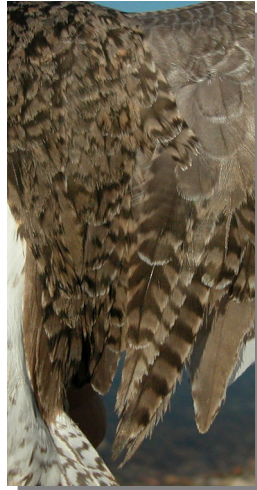
Redshank. Spring. Adult: pattern and wear of wing coverts (02-V)



Redshank. Spring. 2nd year: pattern and wear of wing coverts (04-V)

202 Common Redshank

Put your logo here



Redshank. Spring. Pattern of tertials: left adult (02-V); right 2nd year (04-V)



Redshank. Spring. Adult: pattern of secondaries (02-V)



Redshank. Spring. Adult: pattern of primaries (02-V)



Redshank. Spring. 2nd year: pattern of secondaries (04-V)



Redshank. Spring. 2nd year: pattern of primaries (04-V)



Redshank. Spring. Adult: pattern of wing (02-V)

202 Common Redshank

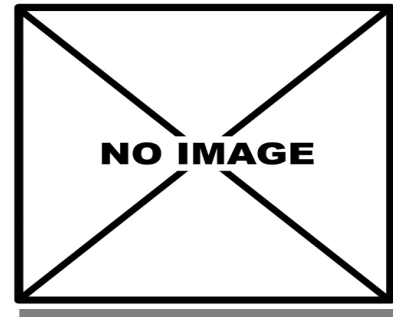
Put your logo here



Redshank. Autumn. Head pattern: top adult (Photo: Ottenby Bird Observatory); bottom 1st year (04-IX)



Redshank. Spring. 2nd year: pattern of wing (04-V)

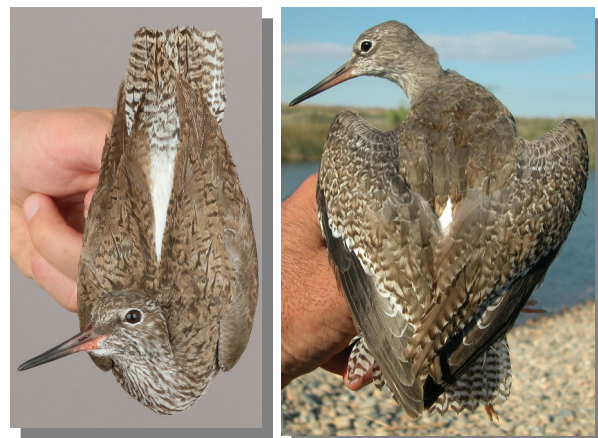


Redshank. Autumn. Breast pattern: top adult (); bottom 1st year (04-IX)

Redshank. Autumn. Adult (07-VII) (Photo: Ottenby Bird Observatory)



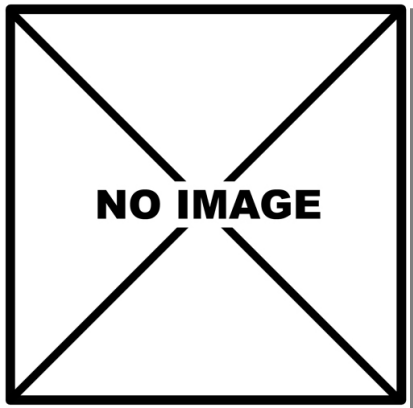
Redshank. Autumn. 1st year (04-IX)



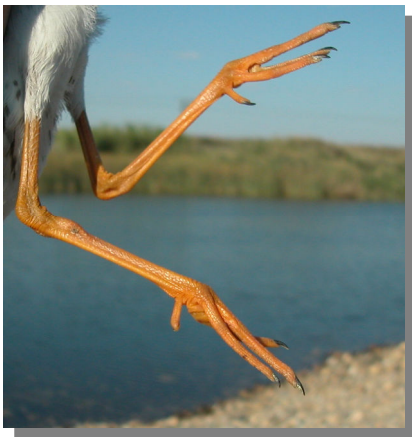
Redshank. Autumn. Upperpart pattern: left adult (Photo: Ottenby Bird Observatory); right 1st year (04-IX)

202 Common Redshank

Put your logo here



Redshank.
Autumn.
Legs pat-
tern: top
adult ();
bottom 1st
year (04-
IX)



Redshank. Autumn. Adult: pattern of wing coverts (Photo: Ottenby Bird Observatory)



Redshank. Autumn. 1st year: pattern of wing coverts (04-IX)



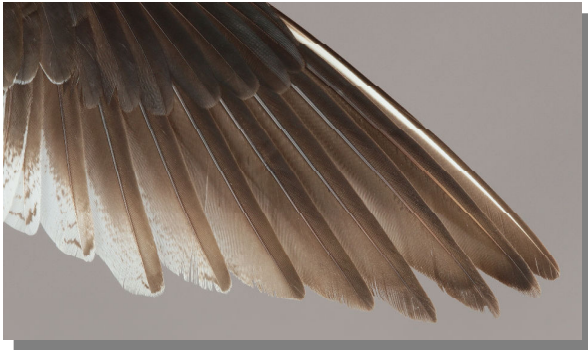
Redshank. Autumn. Tail pattern: left adult (Photo: Ottenby Bird Observatory); right 1st year (04-IX)



Redshank. Autumn. Pattern of tertials: left adult (Photo: Ottenby Bird Observatory); right 1st year (04-IX)

202 Common Redshank

Put your logo here



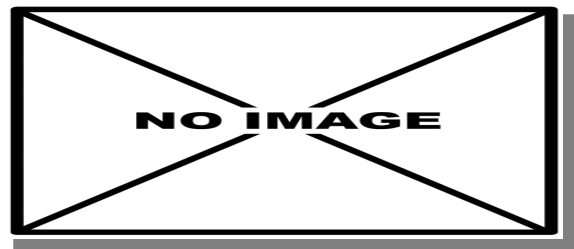
Redshank. Autumn. Adult: pattern of primaries (Photo: Ottenby Bird Observatory)



Redshank. Autumn. 1st year: pattern of secondaries (04-IX)



Redshank. Autumn. 1st year: pattern of primaries (04-IX)



Redshank. Autumn. Adult: pattern of wing (Photo: Ottenby Bird Observatory)



Redshank. Autumn. Adult: pattern of secondaries (Photo: Ottenby Bird Observatory)



Redshank. Autumn. 1st year: pattern of wing (04-IX)