

**05320 Black-tailed Godwit** (*Limosa limosa*)

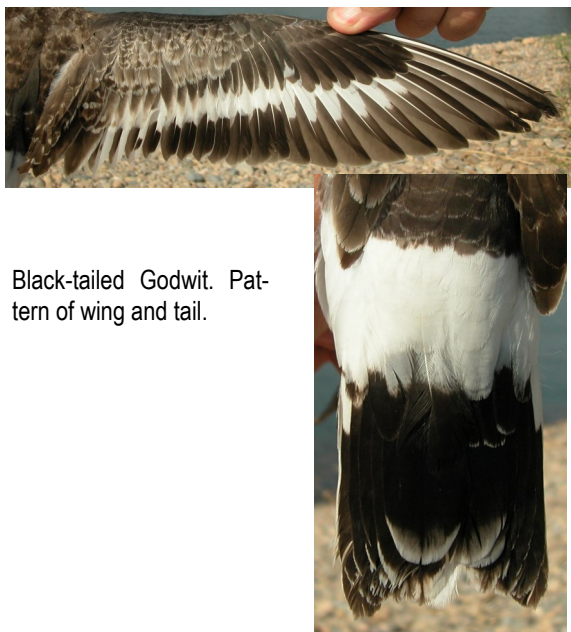


Black-tailed Godwit. Autumn. 1st year (24-VIII).

**BLACK-TAILED GODWIT** (*Limosa limosa*)

**IDENTIFICATION**

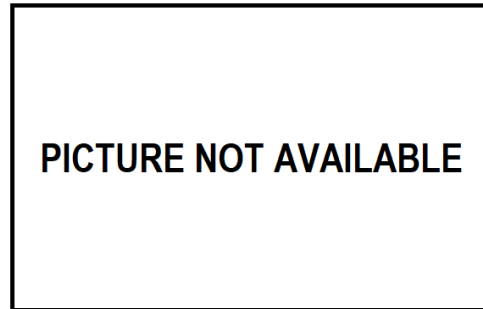
42-45 cm. In **breeding** plumage with more or less reddish-chestnut head, neck and breast; feathers on upperparts dark-grey with chestnut edges; white underparts with dark bars; wings with a white band; white rump with squared pattern; white based tail with a black terminal band; legs dark grey. In **winter** with more uniform grey upperparts and white underparts.



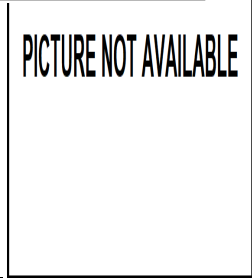
Black-tailed Godwit. Pattern of wing and tail.

**SIMILAR SPECIES**

Recalls a **Bar-tailed Godwit**, which has wings without white band, barred tail and white rump extending in point up back.



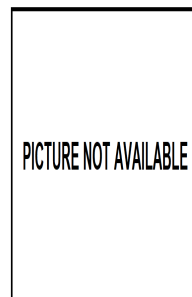
Bar-tailed Godwit



**SEXING**

Only in **adult** birds with full **breeding** plumage (and not **always** due to overlap): **male** with variable amount of deep chestnut colours and brown bars on flanks and underparts. The majority of **females** duller with little chestnut and few brown bars on underparts (**CAUTION:** plumage pattern of **2nd year** birds is highly variable; this species, in **autumn** after moult, this species cannot be sexed using plumage characters).

Bill length is an useful character for sexing in extreme birds: **male** with bill shorter than 94 mm; **female** with bill longer than 104 mm.



Black-tailed Godwit. Adult. Spring. Sexing. Pattern of underparts: left male; right female.

**AGEING**

3 types of age can be recognized:

**1st year autumn** quite similar to **adults** but most wing coverts are retained buff-fringed **juvenile** feathers; also **juvenile** flight feathers are retained; outer tail feathers are usually retained but not always.

**2nd year spring** with very variable strategies. Outer tail feathers, some tertials, some upperwing coverts and flight feathers retained **juvenile** and worn: some attain partial **breeding** feathers.

**Adult** in **autumn** with uniform pale grey-brown upperparts and wing coverts; inner and median coverts fringed white; white underparts with breast washed brownish; usually flight feathers in moult. In **spring** with feathers grey-brown or blackish-brown with rufous marks or fringes on upperparts; coverts grey brown with whitish fringes; underparts with variable amount of chestnut and dark brown barring; flight feathers slightly worn.



Black-tailed Godwit. Autumn. Ageing. Pattern of wing coverts: top adult; bottom 1st year.



Black-tailed Godwit. Spring. Ageing. Pattern of wing coverts: top adult; bottom 2nd year.

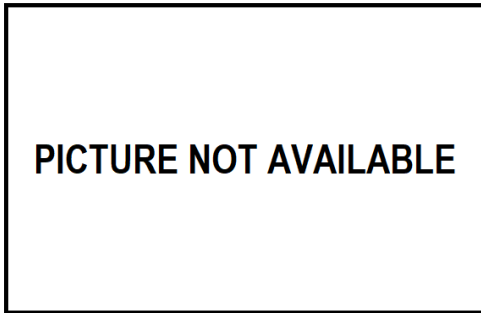
**MOULT**

Complete **postbreeding** moult, starting in breeding places and finished in wintering quarters (**CAUTION:** some birds start their moult only when arrival to wintering areas). Partial **postjuvenile** moult including body feathers, inner tertials, usually central tail feathers and inner wing coverts; starts in breeding areas and finished in wintering quarters. Both types of age have a **prebreeding** moult including body feathers, some wing coverts and, usually, some tertials and central tail feathers.

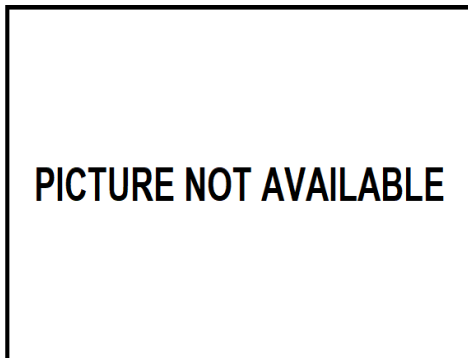
**PHENOLOGY**

I	II	III	IV	V	VI	VII	VIII	IX	X	XI	XII

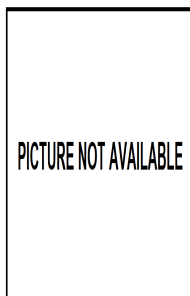
- Summer visitor
- Wintering
- Resident
- On passage



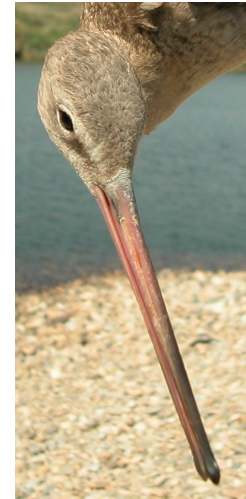
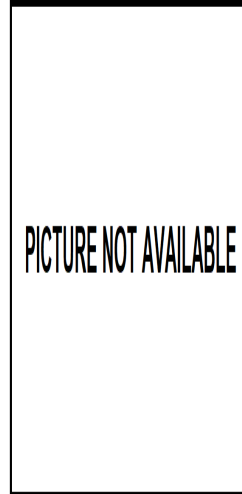
Black-tailed Godwit. Autumn. Adult ().



Black-tailed Godwit. Autumn. Head pattern: top adult (); bottom 1st year (24-VIII)



Black-tailed Godwit. Autumn. Nape pattern: left adult (); right 1st year (24-VIII)



Black-tailed Godwit. Autumn. Crown pattern: left adult (); right 1st year (24-VIII)



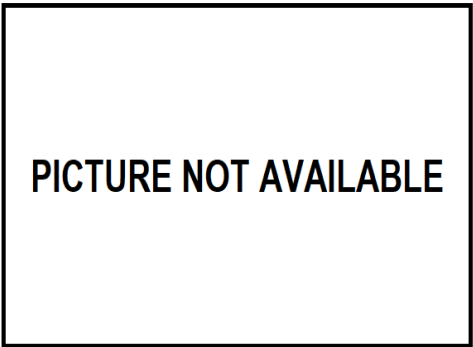
Black-tailed Godwit. Autumn. Breast pattern: top adult (); bottom 1st year (24-VIII)



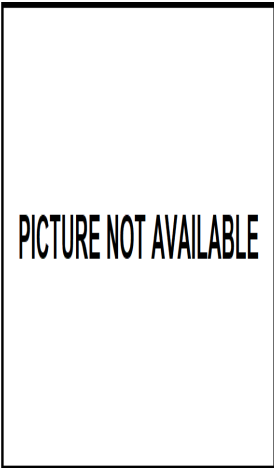
**05320 Black-tailed Godwit (*Limosa limosa*)**



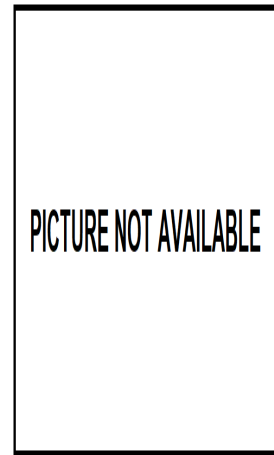
Black-tailed Godwit. Autumn. Pattern of flank: top adult (); bottom 1st year (24-VIII)



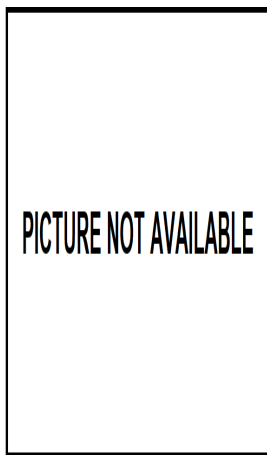
Black-tailed Godwit. Autumn. Pattern of legs: top adult (); bottom 1st year (24-VIII)



Black-tailed Godwit. Autumn. Upperpart pattern: left adult (); right 1st year (24-VIII)

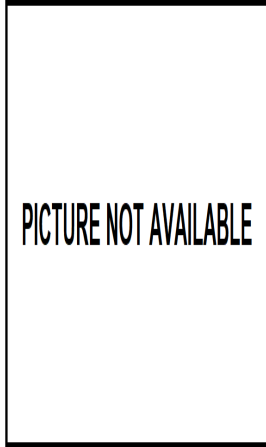


Black-tailed Godwit. Autumn. Underpart pattern: left adult (); right 1st year (24-VIII)



Black-tailed Godwit. Autumn. Tail pattern: left adult (); right 1st year (24-VIII)

**05320 Black-tailed Godwit (*Limosa limosa*)**



Black-tailed Godwit. Autumn. Pattern of tertiaries: left adult (); right 1st year (24-VIII)



Black-tailed Godwit. Autumn. Adult: pattern of primaries ()



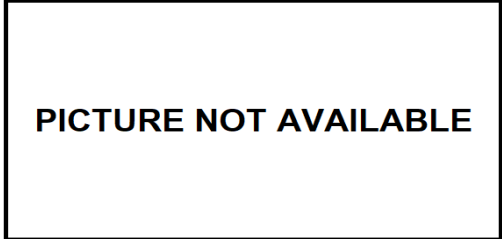
Black-tailed Godwit. Autumn. 1st year: pattern of primaries



Black-tailed Godwit. Autumn. Adult: pattern of secondaries ()



Black-tailed Godwit. Autumn. 1st year: pattern of secondaries (24-VIII).



Black-tailed Godwit. Autumn. Adult: pattern of wing ()



Black-tailed Godwit. Autumn. 1st year: pattern of wing (24-VIII).