

193 Common Snipe

Put your logo here



Common Snipe. Spring. Adult (18-II).

COMMON SNIPE (*Gallinago gallinago*)

IDENTIFICATION

25-28 cm. Black and reddish upperparts, streaked; buff breast mottled dark; white vent; black crown, with buff longitudinal streak; brown wings with white tips on secondaries; barred buff and black tail; long and greenish bill.



Common Snipe. Pattern of head and crown,

SIMILAR SPECIES

Recalls a **Woodcock** (34-36 cm), which is bigger and has transversal lines on crown; **Jack Snipe** is smaller (19-22 cm) and the central longitudinal streak on crown is dark..



Woodcock



Jack Snipe

SEXING

Plumage of both sexes alike.

AGEING

This species doesn't breed in Aragon, so only 2 types of age can be recognized:

1st year autumn/2nd year spring only in birds with moult limit between wing coverts if **juvenile** feathers have been retained, which will be more eroded than the adult type and lacking a dark patch on tips; primary coverts with rounded tips; primaries with poorly rounded tips.

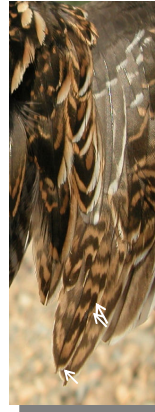
Adult with all wing coverts with the same age, with a dark patch on tips; primary coverts with squared tips; primaries with rounded tips.

193 Common Snipe

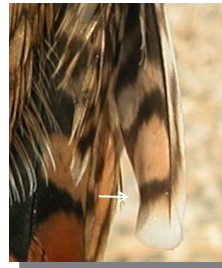
Put your logo here



Common Snipe. Ageing. Pattern of wing coverts: left adult; right juvenile.



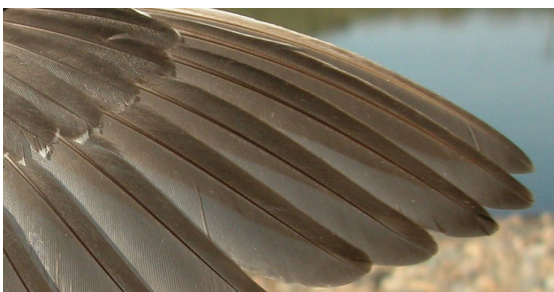
Common Snipe. Ageing. Pattern of tertials: left adult; right juvenile.



Common Snipe. Ageing. Pattern of the outer tail feather: left adult; right juvenile.



Common Snipe. Ageing. Pattern of tips of primary coverts: top adult; bottom juvenile.



Common Snipe. Ageing. Pattern of tips of primaries: top adult; bottom juvenile.

MOULT

Complete **postbreeding** moult, usually finished in November-December. Partial **postjuvenile** moult involving body feathers, central pair (sometimes all) tail feathers and lesser and median coverts; usually finished in October. Both age classes have a **prebreeding** moult including body feathers, tail, tertials and wing coverts.

PHENOLOGY

I	II	III	IV	V	VI	VII	VIII	IX	X	XI	XII

STATUS IN ARAGON

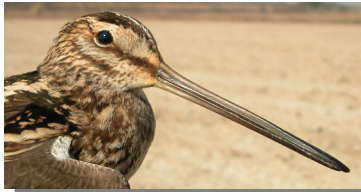
Wintering species widely distributed throughout the Region in wet places.



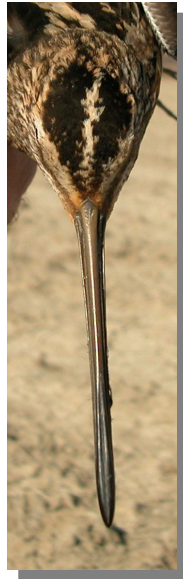
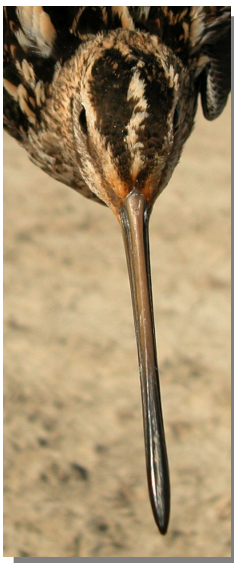
Common Snipe. Spring. 2nd year (18-II).

193 Common Snipe

Put your logo here



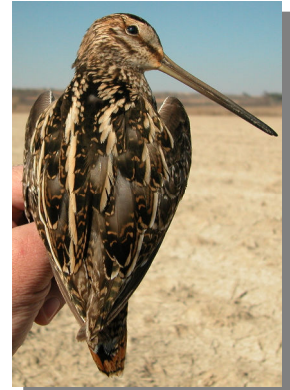
Common Snipe. Spring. Head pattern: top adult (18-II); bottom 2nd year (18-II)



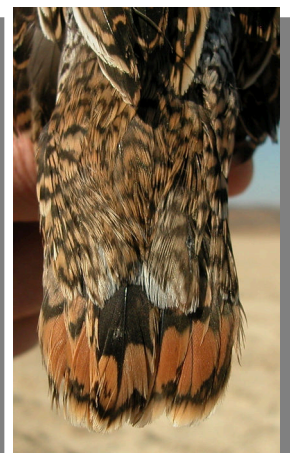
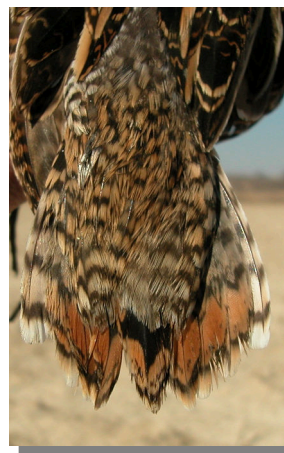
Common Snipe. Spring. Crown pattern: left adult (18-II); right 2nd year (18-II)



Common Snipe. Spring. Breast pattern: top adult (18-II); bottom 2nd year (18-II)



Common Snipe. Spring. Upperpart pattern: left adult (18-II); right 2nd year (18-II)



Common Snipe. Spring. Tail pattern: left adult (18-II); right 2nd year (18-II)



Common Snipe. Spring. Adult: pattern of wing coverts (18-II)

193 Common Snipe

Put your logo here



Common Snipe. Spring. 2nd year: pattern of wing coverts (18-II)



Common Snipe. Spring. 2nd year: pattern of primary coverts (18-II)



Common Snipe. Spring. Pattern of tertials: left adult (18-II); right 2nd year (18-II)



Common Snipe. Spring. Adult: pattern of primaries (18-II)



Common Snipe. Spring. Adult: pattern of primary coverts (18-II)



Common Snipe. Spring. 2nd year: pattern of primaries (18-II)

193 Common Snipe

Put your logo here



Common Snipe. Spring. Adult: pattern of secondaries (18-II)



Common Snipe. Spring. 2nd year: pattern of wing (18-II)



Common Snipe. Spring. 2nd year: pattern of secondaries (18-II)



Common Snipe. Autumn. Adult (24-VIII).



Common Snipe. Spring. Adult: pattern of wing (18-II)



Common Snipe. Autumn. 1st year (11-IX).

193 Common Snipe

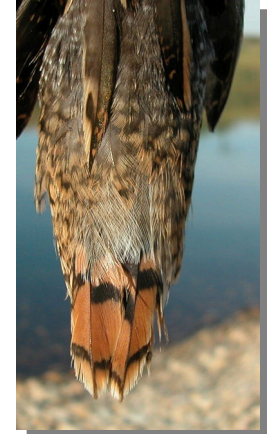
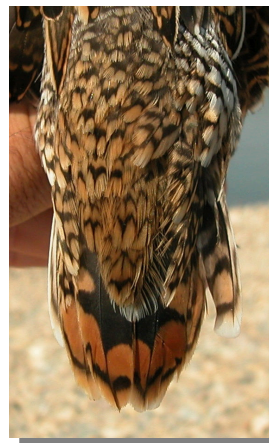
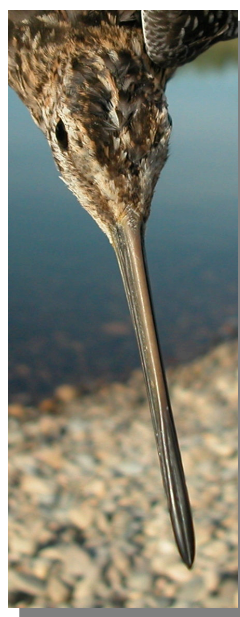
Put your logo here



Common Snipe. Autumn. Head pattern: top adult (24-VIII); bottom 1st year (11-IX)



Common Snipe. Autumn. Upperpart pattern: left adult (24-VIII); right 1st year (11-IX)

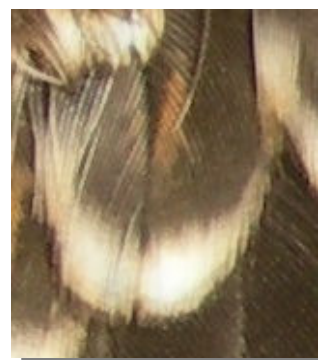


Common Snipe. Autumn. Tail pattern: left adult (24-VIII); right 1st year (11-IX)

Common Snipe. Autumn. Crown pattern: left adult (24-VIII); right 1st year (11-IX)



Common Snipe. Autumn. Breast pattern: top adult (24-VIII); bottom 1st year (11-IX)



Common Snipe. Pattern of a median covert: top adult (24-VIII); bottom 1st year (11-IX)

193 Common Snipe

Put your logo here



Common Snipe. Autumn. Adult: pattern of wing coverts (24-VIII)



Common Snipe. Autumn. Adult: pattern of primary coverts (24-VIII)



Common Snipe. Autumn. 1st year: pattern of wing coverts (11-IX)



Common Snipe. Autumn. 1st year: pattern of primary coverts (11-IX)



Common Snipe. Autumn. Pattern of tertials: left adult (24-VIII); right 1st year (11-IX)



Common Snipe. Autumn. Adult: pattern of primaries (24-VIII)

193 Common Snipe

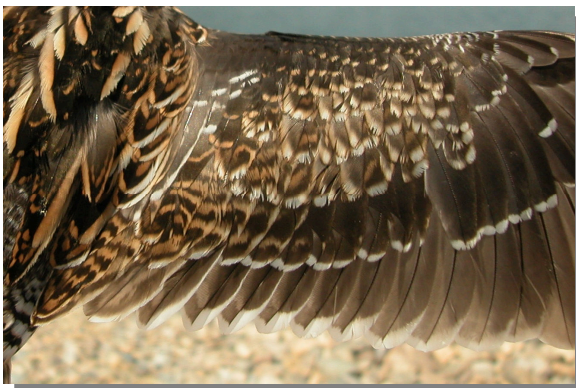
Put your logo here



Common Snipe. Autumn. 1st year: pattern of primaries (11-IX)



Common Snipe. Autumn. Adult: pattern of wing (24-VIII).



Common Snipe. Autumn. Adult: pattern of secondaries (24-VIII)



Common Snipe. Autumn. 1st year: pattern of wing (11-IX).



Common Snipe. Autumn. 2nd year: pattern of secondaries (11-IX)