



Jack Snipe. Adult (26-X)

JACK SNIFE (*Lymnocyptes minimus*)

IDENTIFICATION

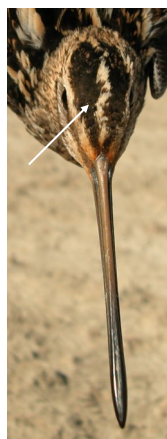
19-22 cm. Brown head, with dark bars; upper neck with small brown spots; dark upperparts, with metallic green bright and longitudinal pale bands; pale breast and strongly brown streaked; brown bill with dark tip.



Jack Snipe.
Pattern of crown

SIMILAR SPECIES

Recalls a **Common Snipe**, which is bigger (25-28 cm) and have a pale longitudinal streak on crown.



Common Snipe

SEXING

Plumage of both sexes alike. It's possible to sex the biggest **males**: wing longer than 120 mm. (**CAUTION**: birds with shorter wings belong to both sexes).

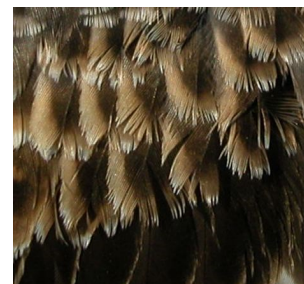
AGEING

This species doesn't breed in Aragon, so only 2 age groups can be recognized:

1st year/2nd year winter only in birds with partial **postjuvenile** moult; narrow outer tail feathers, the outermost with a black line separating two pale spots; the outermost primary with pointed tip; wing coverts with pale chestnut edges; undertail covers with indistinct dark streaks on shafts (**CAUTION**: many birds moult all the undertail coverts or they change these feathers along the winter).

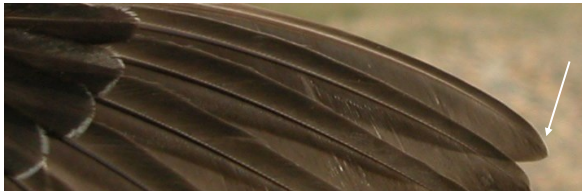
Adult with broad outer tail feathers, the outermost with a single pale spot on the external side; the outermost primary with rounded tip; wing coverts with deep chestnut edges; undertail covers with distinct dark streaks on shafts.

CAUTION: **1st year** birds with a complete **postjuvenile** moult are indistinguishable from **adults**.



Jack Snipe. Ageing. Pattern of wing coverts: left adult; right 1st year.

05180 Jack Snipe (*Lymnocyptes minimus*)



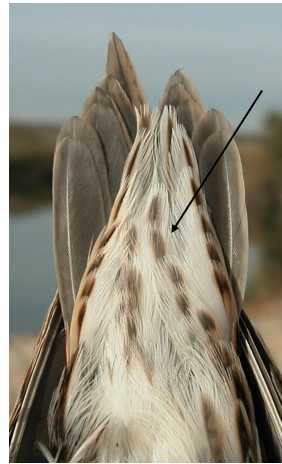
Jack Snipe. Ageing. Pattern of the outermost primary: top adult; bottom 1st year.



Jack Snipe. Ageing. Pattern of 2nd and 3rd tail feathers: left adult; right 1st year.



Jack Snipe. Ageing. Pattern of the outermost tail feathers: left adult; right 1st year.



Jack Snipe. Ageing. Pattern of undertail coverts: left adult; right 1st year.

MOULT

Complete **postbreeding** moult, usually finished in October. **Postjuvenile** moult can be complete or partial, being only these birds the ones which can be aged in autumn/winter; completed during autumn migration. Both age classes have a **prebreeding** moult involving body feathers, some tail feathers, tertials and some wing coverts.

PHENOLOGY

I	II	III	IV	V	VI	VII	VIII	IX	X	XI	XII

- Summer visitor
- Resident
- Wintering
- On passage



Jack Snipe. 2nd year (18-II).

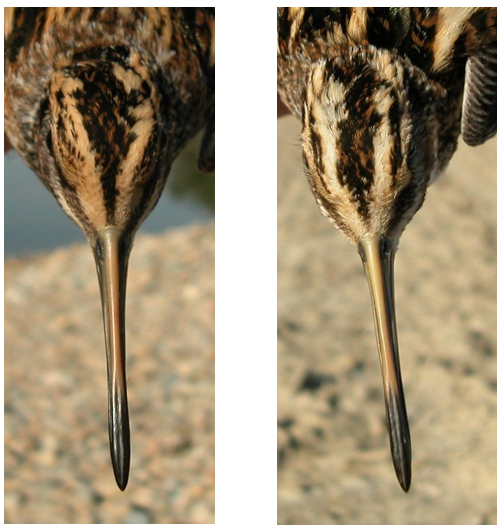
05180 Jack Snipe (*Lymnocyptes minimus*)



J a c k
S n i p e .
H e a d
p a t t e r n :
t o p
a d u l t
(2 6 - X) ;
b o t t o m
2 n d
y e a r (1 8 -
I I) .



Jack Snipe. Upperpart pattern: left adult (26-X); right 2nd year (18-II).



Jack Snipe. Crown pattern: left adult (26-X); right 2nd year (18-II).



Jack Snipe.
P a t t e r n
o f
l e g s :
t o p
a d u l t (2 6 - X) ;
b o t t o m
1 s t
y e a r (1 0 - X I) .

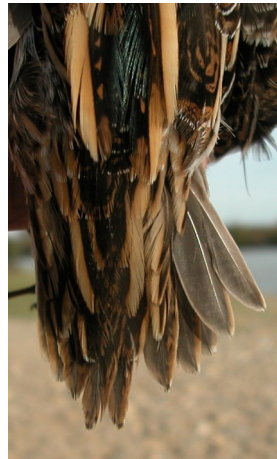


J a c k
S n i p e .
B r e a s t
p a t t e r n :
t o p
a d u l t (2 6 - X) ;
b o t t o m
2 n d
y e a r (1 8 - I I) .

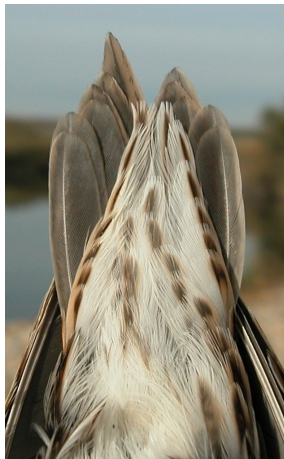


Jack Snipe. Tail pattern: left adult (26-X); right 1st year (10-XI).

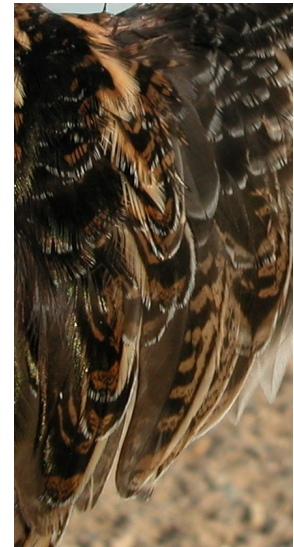
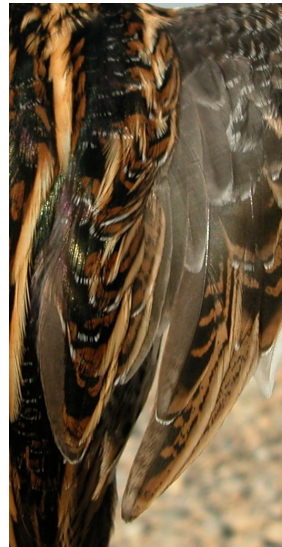
05180 Jack Snipe (*Lymnocyptes minimus*)



Jack Snipe. Pattern of tail feathers: left adult (26-X); right 1st year (10-XI).



Jack Snipe. Pattern of undertail feathers: top left adult (26-X); top right 1st year with moulted feathers (10-XI); left 2nd year with unmoulted feathers (18-II).



Jack Snipe. Pattern of tertials: left adult (26-X); right 1st year (10-XI).



Jack Snipe. Adult: pattern of wing coverts (26-X).



Jack Snipe. 1st year: pattern of wing coverts (10-XI).

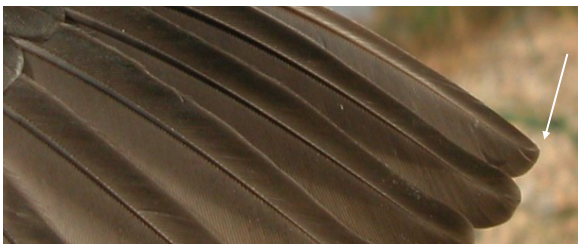
05180 Jack Snipe (*Lymnocyptes minimus*)



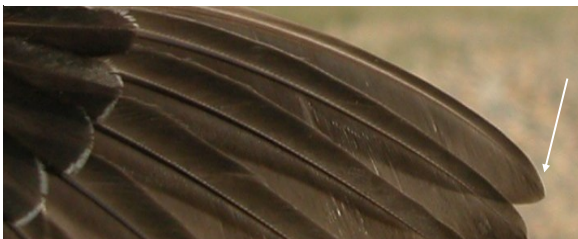
Jack Snipe. Adult: pattern of primary coverts (26-X).



Jack Snipe. 1st year: pattern of primary coverts (10-XI).



Jack Snipe. Adult: pattern of the outermost primary (26-X).



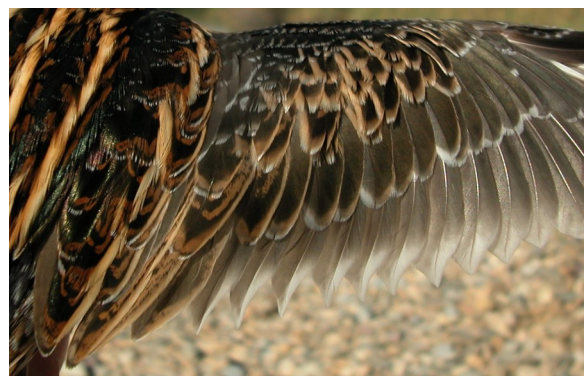
Jack Snipe. 1st year: pattern of the outermost primary (10-XI).



Jack Snipe. Adult: pattern of primaries (26-X).



Jack Snipe. 1st year: pattern of primaries (10-XI).



Jack Snipe. Adult: pattern of secondaries (26-X).



Jack Snipe. 1st year: pattern of secondaries (10-XI).



Jack Snipe. Adult: pattern of wing (26-X).



Jack Snipe. 1st year: pattern of wing (10-XI).