

**05120 Dunlin** (*Calidris alpina*)



Dunlin. Autumn. Adult with extensive moult (27-XI)

**DUNLIN** (*Calidris alpina*)

**IDENTIFICATION**

17-18 cm. In **breeding** plumage with chestnut upperparts and black underparts; in **non-breeding** plumage with grey upperparts and white underparts; head with pale supercilium; wing with a white band; bill long and slightly curved; dark legs.



Dunlin. Autumn.

**SIMILAR SPECIES**

In **breeding** plumage unmistakable due to the black patch on belly. In **non breeding** plumage, dark legs separate the species from the other common small waders recorded in Aragon, except **Little Stint**, which has shorter and less curved bill and smaller size (13-14 cm) and **Curlew Sandpiper**, which has longer bill and white rump.



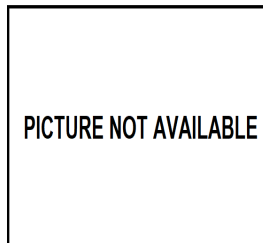
Little Stint



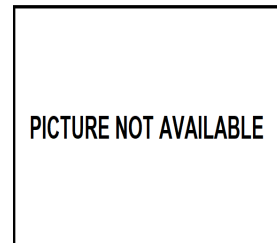
Curlew Sandpiper. Spring.

**SEXING**

In **breeding** plumage, **male** with nape pale grey thinly streaked dark contrasting with crown and mantle (**CAUTION:** some specimens lack a collar). **Female** with streaked brownish nape weakly contrasting with crown and mantle In **non breeding** plumage pattern of both sexes alike. **Note: female** has a larger size than **male** but it is necessary to know the geographical origin in order to sex without errors.



PICTURE NOT AVAILABLE



PICTURE NOT AVAILABLE

Dunlin. Spring. Sexing. Nape pattern: left male; right female.

**MOULT**

Complete **postbreeding** moult, starting in breeding places (amount of changed feathers variable depending of geographical origin), suspended during migration and finished in wintering sites. Partial **postjuvenile** moult involving body feathers, some wing coverts and occasionally some tertials and tail feathers. Both age classes have a partial **prebreeding** moult including body feathers and sometimes median wing coverts.

**05120 Dunlin** (*Calidris alpina*)

**AGEING**

This species doesn't breed in Aragon so only 3 age groups are recognized:

**1st year autumn** similar to **adult** but underparts white with flanks with large brown spots; there may be retained **juvenile** feathers (with chestnut/buff fringes) on wing coverts, uppertail coverts, upperparts and tertials; tip of inner primary coverts with thin white edge; unmoulted tail feathers pointed.

**2nd year spring** with retained **juvenile** feathers heavily worn; retained inner median coverts with traces of buff fringes; unmoulted **juvenile** primaries very worn.

**Adult in autumn**, after **postbreeding** moult, with white underparts with flanks with sparse brown spots; grey wing coverts with whitish fringes; tip of inner primary coverts with broad white edge; grey upperparts (**CAUTION**: some breeding feathers may be retained on mantle); moulted tail feathers with rounded tips. In **breeding** plumage (**spring**) with brownish black upperparts with chestnut and pale grey fringes; grey coverts, outer paler at tip and inner fringed whitish; black belly; fresh primaries.

**PHENOLOGY**

I	II	III	IV	V	VI	VII	VIII	IX	X	XI	XII

- Summer visitor      ■ Resident
- Wintering              ■ On passage



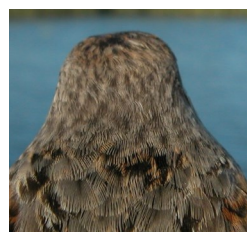
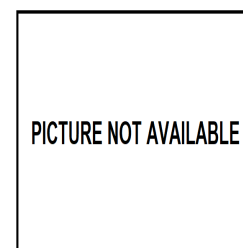
Dunlin. Autumn. Adult poorly moulted ( )



Dunlin. Autumn. 1st year (02-IX)



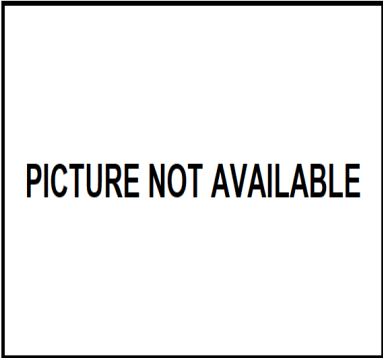
Dunlin. Autumn. Head pattern: top adult poorly moulted ( ); middle adult with extensive moult (27-XI); bottom 1st year (02-IX).



Dunlin. Autumn. Crown pattern: top left adult poorly moulted ( ); top right adult with extensive moult (27-XI); left 1st year (02-IX).



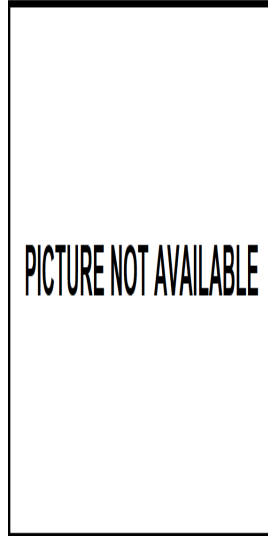
**05120 Dunlin (*Calidris alpina*)**



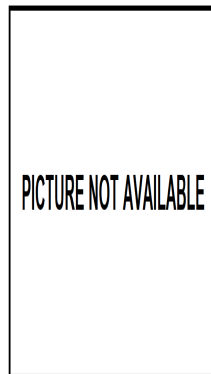
Dunlin. Autumn. Breast pattern: top adult poorly moulted (); middle adult with extensive moult (27-XI); bottom 1st year (02-IX).



Dunlin. Autumn. Pattern of flank: top adult poorly moulted (); middle adult with extensive moult (27-XI); bottom 1st year (02-IX).



Dunlin. Autumn. Upperpart pattern: top left adult poorly moulted (); top right adult with extensive moult (27-XI); left 1st year (02-IX).



Dunlin. Autumn. Tail pattern: top left adult poorly moulted (); top right adult with extensive moult (27-XI); left 1st year (02-IX).





Dunlin. Autumn. Adult poorly moulted: pattern of wing covers (28-VIII). (Photo: Pere Josa)



Dunlin. Autumn. Adult poorly moulted: pattern of primary covers (28-VIII). (Photo: Pere Josa)



Dunlin. Autumn. Adult with extensive moult: pattern of wing covers (27-XI).



Dunlin. Autumn. Adult with extensive moult: pattern of primary covers (27-XI).



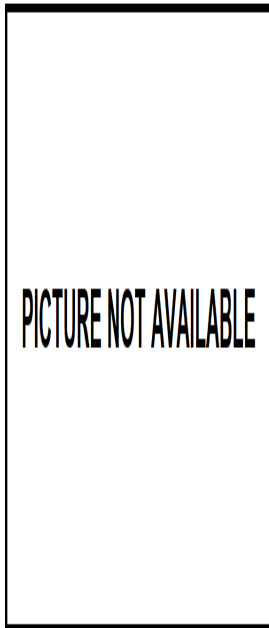
Dunlin. Autumn. 1st year: pattern of wing covers (02-IX).



Dunlin. Autumn. 1st year: pattern of primary covers (02-IX).



**05120** Dunlin (*Calidris alpina*)



Dunlin. Autumn. Adult with extensive moult: pattern of primaries (27-XI).



Dunlin. Autumn. Pattern of tertials: top left adult poorly moulted (); top right adult with extensive moult (27-XI); left 1st year (02-IX).



Dunlin. Autumn. 1st year: pattern of primaries (02-IX).



Dunlin. Autumn. Adult poorly moulted: pattern of primaries (28-VIII). (Photo: Pere Josa)



Dunlin. Autumn. Adult poorly moulted: pattern of secondaries (28-VIII). (Photo: Pere Josa)



**05120** Dunlin (*Calidris alpina*)



Dunlin. Autumn. Adult with extensive moult: pattern of secondaries (27-XI).



Dunlin. Autumn. 1st year: pattern of secondaries (02-IX).



**PICTURE NOT AVAILABLE**

Dunlin. Autumn. Adult poorly moulted: pattern of wing (28-VIII). (Photo: Pere Josa)



Dunlin. Autumn. Adult with extensive moult: pattern of wing (27-XI).



Dunlin. Autumn. 1st year: pattern of wing (02-IX).