

**05090 Curlew Sandpiper** (*Calidris ferruginea*)

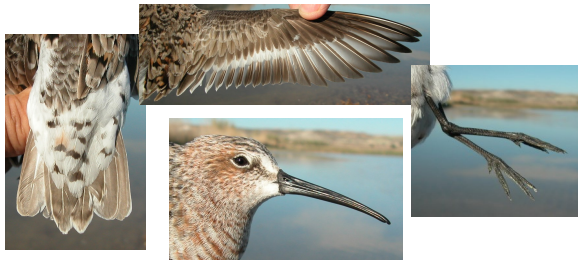


Curlew Sandpiper. Spring. Adult (07-V)

**CURLEW SANDPIPER** (*Calidris ferruginea*)

**IDENTIFICATION**

18-19 cm. In **breeding** plumage with dark brown upperparts and reddish underparts; in **non-breeding** plumage with grey upperparts and white underparts; head with pale supercilium; wing with a white band; bill long and curved; dark legs.



Curlew Sandpiper. Pattern of bill, rump, wing and legs.

**SIMILAR SPECIES**

In **breeding** plumage unmistakable due to chestnut pattern on head and underparts. In **non breeding** plumage recalls a **Dunlin**, which has shorter bill and a dark line on rump.



Dunlin.  
Autumn

**SEXING**

In **non breeding** plumage pattern of both sexes alike. In **breeding** plumage brightness and intensity of chestnut areas is highly variable in both sexes, so it is not a significant characteristic for sex identification. Also biometric measurements show overlap.

**AGEING**

Since **2nd year** birds usually remain in their wintering sites, in Aragon only 2 age classes can be recognized:

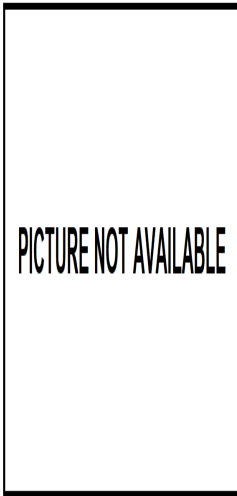
**1st year autumn** with very fresh plumage; lesser and median coverts light grey with dark shaft streak and a broad rounded buff to whitish edge; feathers of upperparts dull grey with a darker subterminal edge and white tip; flight feathers of single generation.

**Adult** in both **spring** and **autumn** migratory passage with chestnut feathers on head and breast; wing coverts with a mix of grey non breeding and black and chestnut breeding feathers; in **autumn** with all flight feathers worn if unmoulted or with a mix of old unmoulted and fresh changed feathers; moulted feathers of upperparts grey brown with darker shaft streak.



Curlew Sandpiper. Autumn. Ageing. Pattern of breast: top adult; bottom 1st year.

**05090 Curlew Sandpiper** (*Calidris ferruginea*)



Curlew Sandpiper. Autumn. Ageing. Pattern of upperparts: left adult; right 1st year.



Curlew Sandpiper. Autumn. Ageing. Pattern of wing coverts: top adult (photo: Ottenby Bird Observatory); bottom 1st year.

**MOULT**

Complete **postbreeding** moult, starting in breeding places and finished in wintering sites. Partial **postjuvenile** moult similar to **adult** but usually not started, or it is very little, till arriving to wintering areas; some **juvenile** flight feathers can be retained. Both age classes have a partial **prebreeding** moult involving body feathers, most of scapulars, some tertials, some tail feathers and sometimes some wing coverts.

**PHENOLOGY**

I	II	III	IV	V	VI	VII	VIII	IX	X	XI	XII

- Summer visitor
- Resident
- Wintering
- On passage



Curlew Sandpiper. Autumn Adult ( )



Curlew Sandpiper. Autumn 1st year (14-IX)



**05090 Curlew Sandpiper** (*Calidris ferruginea*)



PICTURE NOT AVAILABLE



PICTURE NOT AVAILABLE

C u r l e w  
S a n d p i p e r .  
B r e a s t p a t t e r n :  
t o p a d u l t i n  
s p r i n g ( 0 7 - V ) ;  
m i d d l e a d u l t i n  
a u t u m n ( ) ;  
b o t t o m 1 s t  
y e a r ( 1 4 - I X )



Curlew Sandpiper. Pattern of head and bill: top adult in spring (07-V); middle adult in autumn (); bottom 1st year (14-IX)



PICTURE NOT AVAILABLE



PICTURE NOT AVAILABLE

C u r l e w  
S a n d p i p e r .  
F l a n k  
p a t t e r n : t o p  
a d u l t i n  
s p r i n g ( 0 7 -  
V ) ; m i d d l e  
a d u l t i n  
a u t u m n ( ) ;  
b o t t o m 1 s t  
y e a r ( 1 4 - I X )



Curlew Sandpiper. Nape pattern: top left adult in spring (07-V); top right adult in autumn (); left 1st year (14-IX)



**05090 Curlew Sandpiper** (*Calidris ferruginea*)



PICTURE NOT AVAILABLE



Curlew Sandpiper. Spring. Adult: pattern of wing covers (07-V)



Curlew Sandpiper. Upperpart pattern: top left adult in spring (07-V); top right adult in autumn (); left 1st year (14-IX)



Curlew Sandpiper. Autumn. Adult: pattern of wing covers (16-VII) (Photo: Ottenby Bird Observatory)



PICTURE NOT AVAILABLE



Curlew Sandpiper. Autumn. 1st year: pattern of wing covers (14-IX)



Curlew Sandpiper. Tail pattern: top left adult in spring (07-V); top right adult in autumn (); left 1st year (14-IX)





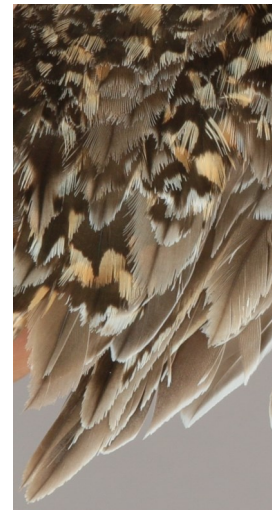
Curlew Sandpiper. Spring. Adult: pattern of primary coverts (07-V)



Curlew Sandpiper. Autumn. Adult: pattern of primary coverts (16-VII) (Photo: Ottenby Bird Observatory)



Curlew Sandpiper. Autumn. 1st year: pattern of primary coverts (14-IX)



Curlew Sandpiper. Pattern of tertials: top left adult in spring (07-V); top right adult in autumn (16-VII) (Photo: Ottenby Bird Observatory); left 1st year (14-IX)



Curlew Sandpiper. Spring. Adult: pattern of secondaries (07-V)



**05090 Curlew Sandpiper** (*Calidris ferruginea*)



Curlew Sandpiper. Autumn. Adult: pattern of secondaries (16-VII) (Photo: Ottenby Bird Observatory)



Curlew Sandpiper. Autumn. 1st year: pattern of secondaries (14-IX)



Curlew Sandpiper. Spring. Adult: pattern of wing (07-V)



Curlew Sandpiper. Spring. Adult: pattern of primaries (07-V)



**PICTURE NOT AVAILABLE**



Curlew Sandpiper. Autumn. Adult: pattern of primaries (16-VII) (Photo: Ottenby Bird Observatory)

Curlew Sandpiper. Autumn. Adult: pattern of wing (16-VII) (Photo: Ottenby Bird Observatory)



Curlew Sandpiper. Autumn. 1st year: pattern of wing (14-IX)