

05010 Little Stint (*Calidris minuta*)



Little Stint. Autumn. Adult (22-VIII).

LITTLE STINT (*Calidris minuta*)

IDENTIFICATION

13-14 cm. Black legs and short bill. In **breeding** plumage dark brownish upperparts with chestnut streaks; wings with pale band; white underparts with brown band on breast; pale supercilium. In **winter** grey brown upperparts; white underparts with grey band on breast.



Little Stint. Autumn.

SIMILAR SPECIES

Can recall a **Dunlin**, which has longer bill and bigger size (17-18 cm).



Dunlin

SEXING

Plumage of both sexes alike. Size can be helpful in extreme birds: **male** with wing shorter than 95 mm, bill shorter than 17 mm; **female** with wing longer than 100 mm, bill longer than 19 mm.

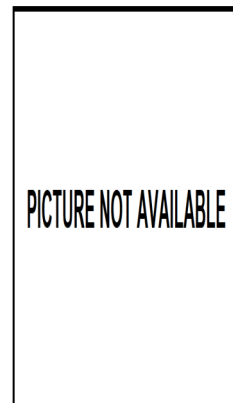
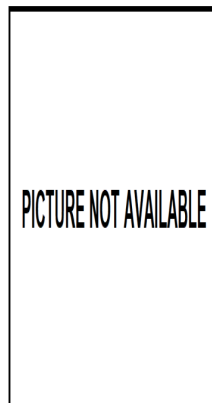
AGEING

This species doesn't breed in Aragon so only 3 age groups are recognized:

1st year autumn with fresh plumage; brown-black mantle with bright chestnut and whitish fringes and edges forming "V" lines; brown median coverts with dull chestnut fringes on outers and bright chestnut on inners; tip of inner primary coverts with broad white edge; white underparts with indistinct buff mottled on upper breast; rump feathers without chestnut edges.

2nd year spring with plumage similar to **adults**, but recognizable by some retained **juvenile** lesser and median coverts worn and with chestnut edge; birds with unmoulted primaries or secondaries show moult limit within flight feathers.

Adult in autumn with plumage slightly worn; upperparts with new feathers grey brown with dark streaks; moulted median coverts grey brown; tip of inner primary coverts without or with thin white edge; white underparts with distinct mottled on upper breast; rump feathers with chestnut edges. In **spring** with black brown upperparts with bright chestnut edges; brown wing coverts with paler edges and whitish tips; white underparts with distinct brown band on upper breast; rump feathers with chestnut edge .



Little Stint. Spring. Ageing. Pattern of wing coverts: left adult; right 2nd year.

05010 Little Stint (*Calidris minuta*)



Little Stint. Autumn. Ageing. Pattern of breast: left adult; right 1st year.



Little Stint. Autumn. Ageing. Pattern of upperparts: left adult; right 1st year.



Little Stint. Autumn. Ageing. Wear of tertials: left adult; right 1st year.

MOULT

Complete **postbreeding** moult, starting in breeding areas with body feathers, suspended during migration and finished in wintering sites. **Postjuvenile** moult generally complete but interrupted in some specimens that may retain some flight feathers. Both age classes have a partial **prebreeding** moult including body feathers, scapulars, median and lesser coverts, tertials and usually central tail feathers.

PHENOLOGY

I	II	III	IV	V	VI	VII	VIII	IX	X	XI	XII

- Summer visitor
- Resident
- Wintering
- On passage

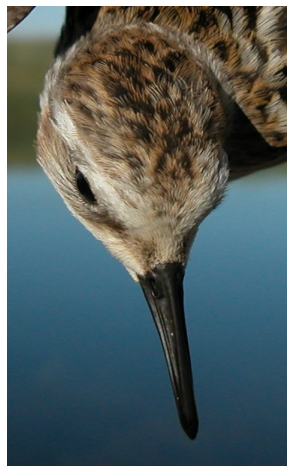


Little Stint. Autumn. 1st year (22-VIII).

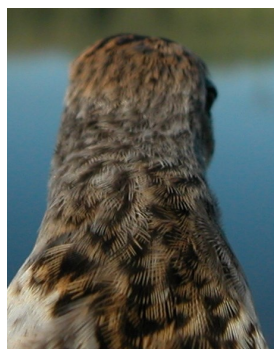
05010 Little Stint (*Calidris minuta*)



Little Stint. Autumn. Head pattern: top adult (22-VIII); bottom 1st year (22-VIII)



Little Stint. Autumn. Crown pattern: left adult (22-VIII); right 1st year (22-VIII)



Little Stint. Autumn. Nape pattern: left adult (22-VIII); right 1st year (22-VIII)

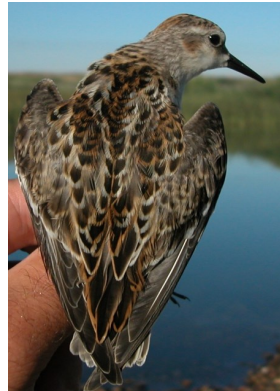


Little Stint. Autumn. Breast pattern: top adult (22-VIII); bottom 1st year (22-VIII)



Little Stint. Autumn. Flank pattern: top adult (22-VIII); bottom 1st year (22-VIII)

05010 Little Stint (*Calidris minuta*)



Little Stint. Autumn. Upperpart pattern: left adult (22-VIII); right 1st year (22-VIII)



Little Stint. Autumn. Adult: pattern of primary covers (22-VIII).



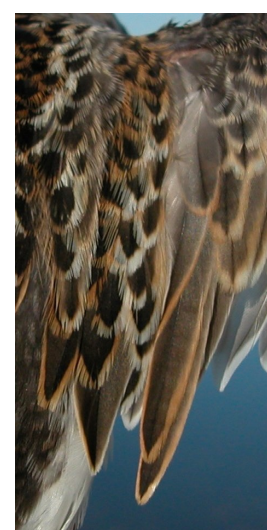
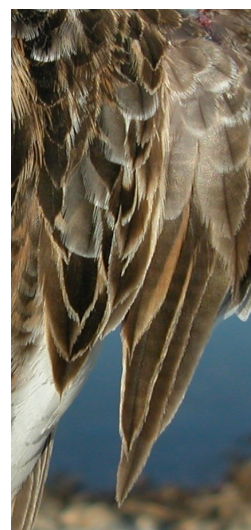
Little Stint. Autumn. Colour of legs: top adult (22-VIII); bottom 1st year (22-VIII)



Little Stint. Autumn. 1st year: pattern of primary covers (22-VIII).



Little Stint. Autumn. Tail pattern: left adult (22-VIII); right 1st year (22-VIII)



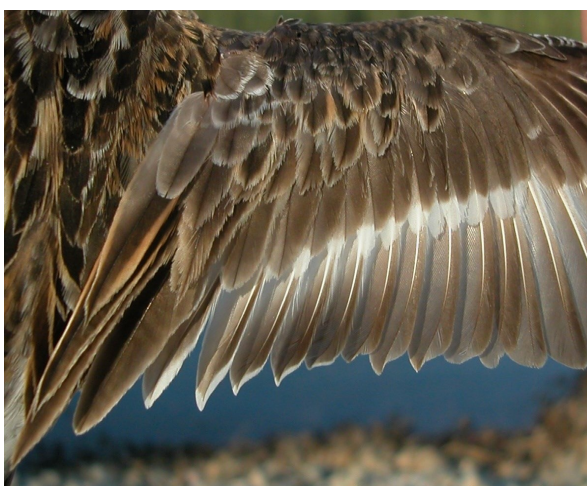
Little Stint. Autumn. Wear of tertials: left adult (22-VIII); right 1st year (22-VIII)



Little Stint. Autumn. Adult: pattern of primaries (22-VIII).



Little Stint. Autumn. 1st year: pattern of primaries (22-VIII).



Little Stint. Autumn. Adult: pattern of secondaries (22-VIII).



Little Stint. Autumn. 1st year: pattern of secondaries (22-VIII).



Little Stint. Autumn. Adult: pattern of wing (22-VIII).



Little Stint. Autumn. 1st year: pattern of wing (22-VIII).